

# *Neomonodictys aquatica* sp. nov. (Pleurotheciaceae) from a plateau lake in Yunnan Province, China

Si-Ping Huang<sup>‡</sup>, Dan-Feng Bao<sup>§,¶,||</sup>, Hong-Wei Shen<sup>¶,‡,§</sup>, Hong-Yan Su<sup>‡</sup>, Zong-Long Luo<sup>‡</sup>

<sup>‡</sup> College of Agriculture and Biological Sciences, Dali University, Dali, China

<sup>§</sup> Center of Excellence in Fungal Research, Mae Fah Luang University, Chiang Rai, Thailand

<sup>|</sup> Department of Entomology and Plant Pathology, Faculty of Agriculture, Chiang Mai University, Chiang Mai, Thailand

<sup>¶</sup> School of Science, Mae Fah Luang University, Chiang Rai, Thailand

Corresponding author: Zong-Long Luo ([luozonglongfungi@163.com](mailto:luozonglongfungi@163.com))

Academic editor: Andreas Beck

## Abstract

## Background

In this study, a new species *Neomonodictys aquatica* was collected from submerged decaying wood in Erhai Lake, Yunnan Province, China.

## New information

*Neomonodictys aquatica* is characterised by acrogenous, solitary, oval, dictyospores (most are transverse septum, occasionally vertical septum, in immaturity the septum is clear, but when mature, the conidia becomes darker so the septum is not clear), smooth-walled conidia. The immature conidia are usually hyaline to olivaceous and mature conidia are usually darkened to black, sometimes with one pale basal cell. Phylogenetic analyses of combined ITS and LSU sequence data showed that the new collection is distinct from other *Neomonodictys* species. Description and illustration are provided as well.

## Keywords

new species, asexual morph, freshwater fungi, phylogeny, taxonomy

## Introduction

Pleurotheciales was introduced by Réblová et al. (2016), based on morphological characters and phylogenetic analyses. Members of Pleurotheciales are mostly saprobic on wood (Hyde et al. 2020) and some species have been identified as opportunistic human pathogens (Guarro et al. 2000, Chew et al. 2010, Réblová et al. 2020). Species of the order were collected on submerged decaying wood in lentic and lotic habitats in temperate, subtropical and tropical zones in Asia, Europe, Melanesia and North America (Matsushima 1971, Réblová et al. 2012, Réblová et al. 2016, Réblová et al. 2020, Hernández-Restrepo et al. 2017, Hyde et al. 2018, Hyde et al. 2020, Luo et al. 2018a).

Pleurotheciaceae is a single family of Pleurotheciales. It is typified by *Pleurothecium* with *P. recurvatum* as the type species (Morgan) Höhn (Réblová et al. 2016). Recently, Hyde et al. (2020) updated the phylogenetic tree for Pleurotheciales and introduced a new genus *Neomonodictys* Y.Z. Lu, C.G. Lin & K.D. Hyde. Currently, ten genera are accepted in this family (Réblová et al. 2016, Maharachchikumbura et al. 2016, Hernández-Restrepo et al. 2017, Hyde et al. 2020, Goh and Kuo 2021).

The monophyletic asexual genus *Neomonodictys* is established for a fungus (*Neomonodictys muriformis*) collected from a freshwater habitat in Thailand, which is morphologically similar to members of *Monodictys* S. Hughes (Hyde et al. 2020). *Neomonodictys* is characterised by holoblastic, monoblastic, integrated, terminal, determinate conidiogenous cells and muriform, subglobose to globose, smooth-walled, pale brown to darkened to black conidia (Hyde et al. 2020).

In this study, the fungus was isolated from submerged decaying wood in Erhai Lake, Yunnan Province in China. The morphology and phylogeny show that our collection is distinct from related species. We provide detailed descriptions, illustrations for *Neomonodictys aquatica* and a synopsis table for the morphology comparison.

## Materials and methods

### Isolation and morphological examination

Submerged decaying wood was collected from Erhai Lake, Dali City, Yunnan, China. The coordinates of sampling sites are E 100°09'49.33", N 25°44'29.65" and at an altitude of 1966 m. Samples were returned to the laboratory in plastic bags. The samples were incubated in aseptic plastic boxes, lined with moistened tissue paper at room temperature for one week. Specimen observations and morphological studies were conducted following the protocols provided by Luo et al. (2018b).

Morphological observations were made by using a SMZ760 series stereomicroscope and photographed using a Nikon-80i microscope. The fungal structures were measured with Tarosoft (R) Image Frame Work programme and images were processed using Adobe

Photoshop CS6 extended version 13.0 (Adobe Systems, USA). Single spore isolation was carried out following the method described in Chomnunti et al. (2014). Germinating conidia were transferred aseptically to PDA plates with 0.5 mg/l of Amoxicillin and incubated at room temperature under dark conditions. The colonies were checked every three days. A herbarium was deposited in the herbarium of Cryptogams Kunming Institute of Botany Academia Sinica (KUN-HKAS), Yunnan, China. Living cultures were deposited in Kunming Institute of Botany Culture Collection (KUNCC) and China General Microbiological Culture Collection Center (CGMCC). Facesoffungi numbers were registered as described in Jayasiri et al. (2015) and Index Fungorum numbers as in [Index Fungorum\(2021\)](#).

## **Molecular Phylogenetic Analyses**

### **DNA Sequencing and Sequence Alignment**

The appropriate fungal mycelium was scraped from the surface of colonies on Potato Dextrose Agar (PDA) plates with a scalpel into a 1.5 ml EP tube (Bao et al. 2018). Genomic DNA was extracted using the Trelief™ Plant Genomic DNA Kit (Beijing TsingKe Biological Technology and Services Co. Ltd, China) according to the manufacturer's protocols.

The primers ITS4/ITS5 for Internal transcribed spacer (ITS) and LR0R/LR5 for Large subunit ribosomal ribonucleic acid (LSU rRNA) were selected for PCR amplification (Vilgalys and Hester 1990). Polymerase Chain Reaction (PCR) mixture was performed in a 25 µl system reaction containing 9.5 µl ddH<sub>2</sub>O, 12.5 µl of 2 × Power Taq PCR Master Mix, 1 µl of DNA template and 1 µl of each primer (10 µM) (Wang et al. 2019). The PCR thermal cycles for amplification of the ITS gene region were as per Su et al. (2015) and the LSU gene followed Sun et al. (2020). PCR amplifications were confirmed on 1% agarose electrophoresis gels stained with ethidium bromide.

Sequences were assembled with BioEdit. Sequences with high similarity indices were determined from a BLAST search to find the closest matches with taxa in *Neomonodictys* and from recently published data (Ariyawansa et al. 2015, Wanasinghe et al. 2015, Hyde et al. 2019, Hyde et al. 2020). All consensus sequences and the reference sequences were aligned in MAFFT v. 7 (<http://mafft.cbrc.jp/alignment/server/index.html>, Katoh and Standley 2013). Aligned sequences of each gene region (ITS and LSU) were combined and manually improved using BioEdit v. 7.0.5.2 (Hall 1999). Ambiguous regions were excluded from the analyses and gaps were treated as missing data.

### **Phylogenetic Analyses**

Maximum Likelihood analysis was performed in the CIPRES Science Gateway v.3.3 (Miller et al. 2010) using RAxML v. 8.2.8 as part of the "RAxML-HPC2 on XSEDE" tool (Stamatakis 2006, Stamatakis et al. 2008). The final ML search was conducted using the GTRGAMMA + I model estimated using MrModeltest 2.2 (Nylander 2004), with ML bootstrap support being calculated from 1000 bootstrap replicates.

Bayesian analysis was performed using MrBayes v. 3.1.2. (Ronquist and Huelsenbeck 2003). The model of each gene was estimated using MrModeltest 2.2 (Nylander 2004), with GTR + I + G model being the best-fit model of ITS and LSU for Bayesian analysis. Posterior Probabilities (PP) (Rannala and Yang 1996) were performed by Markov Chain Monte Carlo sampling (MCMC) in MrBayes v.3.1.2 (Liu et al. 2012). Six simultaneous Markov chains were run for 50 million generations and trees were sampled every 5000<sup>th</sup> generation (resulting in 10,000 trees). The first 2000 trees, representing the burn-in phase of the analyses, were discarded and the remaining 8000 (post burning) trees were used for calculating posterior probabilities (PP) in the majority rule consensus tree (Cai et al. 2006, Liu et al. 2012).

Phylogenetic trees were visualised by FigTree v. 1.4.4 (Rambaut 2014) and edited in Microsoft Office PowerPoint 2016 (Microsoft Inc. United States). Newly-produced sequences in this study were submitted to GenBank (Table 1).

## Taxon treatment

### *Neomonodictys aquatica* D.F. Bao, S.P. Huang & Z.L. Luo, sp. nov.

- IndexFungorum [558842](#)
- Species-ID [Facesofungi number: FOF 10537](#)

#### Material

##### *Holotype:*

- a. scientificName: *Neomonodictys aquatica*; kingdom: Fungi; phylum: Ascomycota; class: Sordariomycetes; order: Pleurotheciales; family: Pleurotheciaceae; genus: *Neomonodictys*; waterBody: Erhai Lake; locality: Baitaiyi; verbatimElevation: 1966 m; locationRemarks: China, Yunnan Province, Dali, saprobic on submerged decaying wood in Erhai Lake; verbatimLatitude: 25°44'29.65"N; verbatimLongitude: 100°09'49.33"E; year: 2020; habitat: freshwater, submerged decaying wood; recordedBy: Longli Li; Siping Huang; collectionID: 2EH 3-17-1 H; collectionCode: L127.; occurrenceID: 2F552F76-CABA-5086-A4E7-DE8BE58E34B1

#### Description

**Sexual morph** Undetermined. **Asexual morph** Hyphomycetous (Fig. 1) sporodochia. Colonies on natural substratum superficial, scattered, black, glistening. Mycelium immersed in the substrate, composed of septate, smooth, thin-walled, light to dark brown, 2–3  $\mu\text{m}$  wide hyphae. Conidiophores lacking. Conidiogenous cells short or occasionally missing, suborbicular, holoblastic, monoblastic, integrated, terminal, determinate, hyaline to pale brown. 3.7–6.4  $\times$  2.9–4.7  $\mu\text{m}$  ( $\bar{x}$  = 5.1  $\times$  3.8  $\mu\text{m}$ ,  $n$  = 10). Conidia 23.1–29.5  $\times$  8.5–11.5  $\mu\text{m}$  ( $\bar{x}$  = 26  $\times$  10  $\mu\text{m}$ ,  $n$  = 30), acrogenous, acrospore, oval, ellipsoidal to obovoid, muriform, smooth-walled, hyaline when young, becoming dark brown at maturity sometimes with one pale basal cell.

**Culture characteristics:** Conidia germinate on PDA in 36 h. Colonies growing on PDA, subglobose, with flat surface, edge jagged, reaching 3 cm long and 2.5 cm wide in 12 weeks at 28°C, dark grey in PDA medium. Mycelium superficial and partially immersed, branched, septate, hyaline to pale brown, smooth.

**Material examined:** China, Yunnan Province, Dali, sporob on submerged decaying wood in Erhai Lake, September 2020, S. P. Huang, L-127 (KUN-HKAS 115806, holotype), ex-type living culture, KUNCC 21-10708 = CGMCC3.20681.

### Etymology

Name reflects the aquatic habitat of this fungus

### Notes

Morphologically, *Neomonodictys aquatica* is easily distinguished from *N. muriformis*. *Neomonodictys muriformis* has wider conidia than *N. aquatica* (15–25 vs. 8–12.2  $\mu\text{m}$ ). In addition, conidia of *N. aquatica* are oval or ellipsoidal to obovoid, while *N. muriformis* has subglobose to globose conidia. In the phylogenetic analysis, *N. aquatica* clustered with *N. muriformis* with strong support (99% ML and 1.00 PP) (Fig. 2). ITS comparison between our strain and MFLUCC 16-1136 revealed 57 bp difference in a total of 539 bp. LSU comparison between our strain and MFLUCC 16-1136 revealed 13 bp difference in total of 829 bp (Jeewon and Hyde 2016). Therefore, we introduce our new isolate as a new species.

## Analysis

### Phylogenetic analyses

The phylogram generated from Maximum Likelihood analysis, based on combined ITS and LSU sequence data, represents Pleurotheciales and the closely related orders. Seventy-nine strains are included in the combined analyses, which comprise 2039 characters (ITS: 849 bp, LSU: 1190 bp) after aligning. *Leotia tubrica* (AFTOL-1) is the outgroup taxon in this phylogenetic tree. The best RAxML tree with a final likelihood value of -12803.740107 is presented. The matrix had 698 distinct alignment patterns with 34.21% undetermined characters or gaps. Estimated base frequencies were as follows: A=0.222096, C=0.295691, G=0.272214, T=0.209999; substitution rates AC=1.588217, AG=2.820721, AT=2.535737, CG=1.003016, CT=5.905028, GT=1.000000; gamma distribution shape parameter  $\alpha$ =0.570011.

In the phylogenetic analysis, our new isolate *Neomonodictys aquatica* clustered as a sister taxon with *N. muriformis* with strong bootstrap support (99 ML/1.00 PP, Fig. 2).

## Discussion

Up to now, two species are accepted in *Neomonodictys*, including the newly-introduced species. Both of them are collected from submerged wood in freshwater habitats (Hyde et al. 2020) and only asexual morphs are reported. Morphologically, *Neomonodictys* is similar to *Monodictys* in having solitary, dictyospores conidia and monoblastic, hyaline to brown conidiogenous cells (Ellis 1971, Seifert et al. 2011). Compared with the diaphragms of them, *Neomonodictys aquatica* have a mostly transverse septum, less of the vertical septum, but the transverse and vertical septa of *N. muriformis* are evenly distributed. The significant difference between *Neomonodictys* and *Monodictys* is conidiophores, which are shorter than in the former (Kukwa and Diederich 2005). Phylogenetically, they are distinct (Hyde et al. 2020). In the phylogenetic analysis, *Monodictys* was placed in Dothideomycetes (Day et al. 2006, Seifert et al. 2011, Wijayawardene et al. 2020), while *Neomonodictys* was placed in Sordariomycetes (Hyde et al. 2020).

## Acknowledgements

This study was financed and supported by National Natural Science Foundation of China (Project ID: 32060005) and Yunnan Fundamental Research Project (grant NO. 202101AU070137). Si-Ping Huang thanks Zheng-Quan Zhang, Jie Gao, Long-Li Li and Rui Gu for the assistance in sample collection and thanks to Long-Li Li and Xi Fu on DNA extraction and PCR amplification.

## References

- Ariyawansa HA, Hyde KD, Jayasiri SC, Buyck B, Kandawatte WT, Cui YY, Dai DQ, Dai YC, Daranagama DA, Jayawardena RS, Lucking R, Ghobad-Nejhad M, Niskanen T, Thambugala KM, Voigt K, Zhao RL, Boonmee S, Bahkali AH, Chen J, Cui BK, Dayarathne MC, Dissanayake AJ, Ekanayaka AH, Hashimoto A, Hongsanan S, Jones EB, Larsson E, Lewis D, Li WJ, Li QR, Liu JK, Luo ZL, Maharachikumbura SS, Mapook A, McKenzie EH, Norphanphoun C, Pang KL, Perera RH, Phookamsak R, Phukhamsakda C, Randrianjohany E, Senanayake IC, Singtripop C, Shang QJ, Tanaka K, Tian Q, Tian CM, Tibpromma S, Verbeken A, Abdel-Wahab MA, Wanasinghe DN, Wijayawardene NN, Zhang JF, Zhang H, Abdel-Aziz FA, Adamck S, Ammirati JF, Bulgakov T, Cabral AL, Callaghan TM, Callac P, Chang CH, Coca LF, Dal-Forno M, Dollhofer V, Fliegerova K, Greiner K, Griffith GW, Ho HM, Hofstetter V, Jeewon R, Kang JC, Kirk PM, Kytovuori I, Lawrey JD, Sato G, Sommai S, Song Y (2015) Fungal diversity notes: 111-252 Taxonomic and phylogenetic contributions to fungal taxa. *Fungal Diversity* 75: 27-274. <https://doi.org/10.1007/s13225-015-0346-5>
- Bao DF, Luo ZL, Liu JK, Bhat DJ, Sarunya N, Li WL, Su HY, Hyde KD (2018) Lignicolous freshwater fungi in China III: New species and record of *Kirschsteiniiothelia* from

- northwestern Yunnan Province. *Mycosphere* 9 (4): 755-768. <https://doi.org/10.5943/mycosphere/9/4/4>
- Cai L, Jeewon R, Hyde KD (2006) Phylogenetic investigations of Sordariaceae based on multiple gene sequences and morphology. *Mycological Research* 110: 137-150.
  - Chew HF, Jungkind DL, Mah DY, Raber IM, ToII AD, Tokarczyk MJ, Cohen EJ (2010) Post-traumatic fungal keratitis caused by *Carpoligna* sp. *Cornea* 29 (4): 449-452. <https://doi.org/10.1097/ICO.0b013e3181af3954>
  - Chomnunti P, Hongsanan S, Aguirre-Hudson B, Tian Q, Peršoh D, Dhami MK, Alias AS, A.S. X, Xu JC, Liu XZ, Stadler M, Hyde KD (2014) The sooty moulds. *Fungal Diversity* 66: 1-36. <https://doi.org/10.1007/s13225-014-0278-5>
  - Day MJ, Gibas CF, Fujimura KE, Egger KN, Currah RS (2006) *Monodictys arctica*, a new hyphomycete from the roots of *Saxifraga oppositifolia* collected in the Canadian High Arctic. *Mycotaxon* 98: 261-272.
  - Ellis MB (1971) Dematiaceous Hyphomycetes. Commonwealth Mycological Institute, [Kew, London](https://www.kew.org/). [ISBN 19710600233]
  - Goh TK, Kuo CH (2021) Reflections on *Canalisporium*, with descriptions of new species and records from Taiwan. *Mycological Progress* 20: 647-680. <https://doi.org/10.1007/s11557-021-01689-6>
  - Guarro J, Vieira LA, De FD, Gené J, Zaror L, Hofing-Lima AL, Fischman O, Zorat-Yu C, Figueras MJ (2000) *Phaeoisaria clematidis* as a cause of keratomycosis. *Journal of Clinical Microbiology* 38: 2434-2437. <https://doi.org/10.1128/JCM.38.6.2434-2437.2000>
  - Hall TA (1999) BioEdit: a user-friendly biological sequence alignment editor and analysis program for Windows 95/98/NT. *Nucleic Acids Symposium Series* 41: 95-98.
  - Hernández-Restrepo M, Gené J, Castañeda-Ruiz RF, Mena-Portales J, Crous PW, Guarro J (2017) Phylogeny of saprobic microfungi from Southern Europe. *Studies in Mycology* 86: 53-97. <https://doi.org/10.1016/j.simyco.2017.05.002>
  - Hyde KD, Chaiwan N, Norphanphoun C, Boonmee S, Camporesi E, Chethana KW, Dayarathne M, Silva N, Dissanayake AJ, Ekanayaka AH, Hongsanan S, Huang SK, Jayasiri SC, Jayawardena RS, Jiang HB, Karunarathna A, Lin CG, Liu JK, Liu NG, Lu YZ, Luo ZL, Maharachchimbura SS, Manawasinghe IS, Pem D, Perera RH, Phukhamsakda C, Samarakoon MC, Senwannana C, Shang QJ, Tennakoon DS, Thambugala KM, Tibpromma S, Wanasinghe DN, Xiao YP, Yang J, Zeng XY, Zhang ZF, Zhang SN, Bulgakov TS, Bhat DJ, Cheewangkoon R, Goh TK, Jones EB, Kang JC, Jeewon R, Liu ZY, Lumyong S, Kuo CH, McKenzie EH, Wen TC, Yan JY, Zhao Q (2018) *Mycosphere notes* 169-224. *Mycosphere* 9: 271-430. <https://doi.org/10.5943/mycosphere/9/2/8>
  - Hyde KD, Tennakoon DS, Jeewon R, Bhat DJ, Maharachchikumbura SS, Rossi W (2019) *Fungal diversity notes* 1036-1150: taxonomic and phylogenetic contributions on genera and species of fungal taxa. *Fungal Diversity* 96: 1-242. <https://doi.org/10.1007/s13225-019-00429-2>
  - Hyde KD, Dong Y, Phookamsak R, Jeewon R, Bhat DJ, Jones EB, Liu NG, Abeywickrama PD, Mapook A, Wei D, Perera RH, Manawasinghe IS, Pem D, Karunarathna DB, Ekanayaka AH, Bao DF, Li J, Samarakoon MC, Chaiwan N, Lin CG, Phutthacharoen K, Zhang SN, Senanayake IC, Goonasekara ID, Thambugala KM, Phukhamsakda C, Tennakoon DS, Jiang HB, Yang J, Zeng M, Huanraluek N, Liu JK, Wijesinghe SN, Tian Q, Tibpromma S, Brahmanage RS, Boonmee S, Huang SK, Thiyagaraja V, Lu. YZ, Jayawardena RS, Dong W, Yang EF, Singh SK, Singh SM, Rana

- S, Lad SS, Anand G, Devadatha B, Niranjana M, Sarma VV, Liimatainen K, Aguirre-Hudson B, Niskanen T, Overall A, Alvarenga RL, Gibertoni TB, Pfigler WP, Horváth E, Imre A, Alves AL, Santos AC, Tiago PV, Bulgakov TS, Wanasinghe DN, Bahkali AH, Doilom M, Elgorban AM, Maharachchikumbura SS, Rajeshkumar KC, Haelewaters D, Mortimer PE, Zhao Q, Lumyong S, Xu J, Sheng J (2020) Fungal diversity notes 1151-1276: taxonomic and phylogenetic contributions on genera and species of fungal taxa. *Fungal Diversity* 100: 5-277. <https://doi.org/10.1007/s13225-020-00439-5>
- Jayasiri SC, Hyde KD, Ariyawansa HA, Bhat J, Buyck B, Cai L, Dai YC, Abd-Elsalam KA, Ertz D, Hidayat I, Jeewon R, Jones EB, Bahkali AH, Karunarathna SC, Liu JK, Luangsa-ard JJ, Lumbsch HT, Maharachchikumbura SS, McKenzie EH, Moncalvo JM, Ghobad-Nejhad M, Nilsson H, Pang KL, Pereira OL, Phillips AJ, Raspé O, Rollins AW, Romero AI, Etayo J, Selçuk F, Stephenson SL, Suetrong S, Taylor JE, Tsui CK, Vizzini A, Abdel-Wahab MA, Wen TC, Boonmee S, Dai DQ, Daranagama DA, Dissanayake AJ, Ekanayaka AH, Fryar SC, Hongsanan S, Jayawardena RS, Li WJ, Perera RH, Phookamsak R, de Silva NI, Thambugala KM, Tian Q, Wijayawardene NN, Zhao RL, Zhao Q, Kang JC, Promptutha I (2015) The faces of fungi database: fungal names linked with morphology, phylogeny and human impacts. *Fungal Diversity* 74: 3-18. <https://doi.org/10.1007/s13225-015-0351-8>
  - Jeewon R, Hyde KD (2016) Establishing species boundaries and new taxa among fungi: recommendations to resolve taxonomic ambiguities. *Mycosphere* 7: 1669-1677. <https://doi.org/10.5943/mycosphere/7/11/4>
  - Katoh K, Standley DM (2013) MAFFT multiple sequence alignment software version 7: improvements in performance and usability. *Molecular Biology and Evolution* 30: 772-780. <https://doi.org/10.1093/molbev/mst010>
  - Kukwa M, Diederich P (2005) *Monodictys epilepraria*, a new species of lichenicolous hyphomycetes on *Leparia*. *The Lichenologist* 37 (3): 217-220. <https://doi.org/10.1017/S002428290501491X>
  - Liu JK, Phookamsak R, Doilom M, Wikee S, Li YM, Ariyawansa H, Boonmee S, Chomnunti P, Dai DQ, Bhat JD, Romero AI, Zhang WY, Monkai J, Jones EB, Chukeatirote E, KoKo TW, Zhao YC, Wang Y, Hyde KD (2012) Towards a natural classification of Botryosphaerales. *Fungal Diversity* 57: 149-210. <https://doi.org/10.1007/s13225-012-0207-4>
  - Luo ZL, Hyde KD, Liu JK, Bhat DJ, Bao DF, Li WL, Su HY (2018a) Lignicolous freshwater fungi from China II: Novel *Distoseptispora* (Distoseptisporaceae) species from northwestern Yunnan Province and a suggested unified method for studying lignicolous freshwater fungi. *Mycosphere* 9: 444-461. <https://doi.org/10.5943/mycosphere/9/3/2>
  - Luo ZL, Hyde KD, Bhat DJ, Jeewon R, Maharachchikumbura SS, Bao DF, Li WL, Su XJ, Yang XY, Su HY (2018b) Morphological and molecular taxonomy of novel species Pleurotheciaceae (Pleurotheciales) from freshwater habitats in Yunnan, China. *Mycological Progress* 17: 511-530. <https://doi.org/10.1007/s11557-018-1377-6>
  - Maharachchikumbura SSN, Hyde KD, Jones EB, McKenzie EH, Bhat JD, Dayaratne MC, Huang SK, Norphanphoun C, Senanayake IC, Perera RH, Shang QJ, Xiao Y, D'souza MJ, Sinang Hongsanan S, Jayawardena RS, Dinushani A, Daranagama DA, Konta S, Goonasekara ID, Zhuang WY, Jeewon R, Phillips AJ, Abdel-Wahab MA, Al-Sadi AM, Bahkali AH, Boonmee S, Boonyuen N, Cheewangkoon R, Dissanayake AJ, Kang JC, Li QR, Liu JK, Liu XZ, Liu ZY, Luangsa-ard J, Pang KL, Phookamsak R, Promptutha I,



- Suetrong S, Stadler M, Wen TC, Wijayawardene NN (2016) Families of Sordariomycetes. *Fungal Diversity* 79: 1-317. <https://doi.org/10.1007/s13225-016-0369-6>
- Matsushima T (1971) *Microfungi of the Solomon Islands and Papua-New Guinea*. Matsushima, Kobe, Japan.
  - Miller MA, Pfeiffer W, Schwartz T (2010) Creating the CIPRES science gateway for inference of large phylogenetic trees. New Orleans, LA. Proceedings of the 2010 Gateway Computing Environments Workshop (GCE), 1-8 pp. <https://doi.org/10.1109/GCE.2010.5676129>
  - Nylander JAA (2004) MrModeltest v.2 Program Distributed by the Author. Uppsala University
  - Rambaut A (2014) FigTree 1.4.2. Available. <http://tree.bio.ed.ac.uk/software/figtree> (accessed July 9, 2014).
  - Rannala B, Yang Z (1996) Probability distribution of molecular evolutionary trees: a new method of phylogenetic inference. *Journal Molecular Evolution* 43: 304-311. <https://doi.org/10.1007/BF02338839>
  - Réblová M, Seifert KA, Fournier J, Štěpánek V (2012) Phylogenetic classification of *Pleurothecium* and *Pleurotheciella* gen. nov. and its dactylaria-like anamorph (Sordariomycetes) based on nuclear ribosomal and protein-coding genes. *Mycological* 104: 1299-1314. <https://doi.org/10.3852/12-035>
  - Réblová M, Seifert KA, Fournier J, Štěpánek V (2016) Newly recognized lineages of perithecial Ascomycetes: the new orders Conioscyphales and Pleurotheciales. *Persoonia* 37: 57-81. <https://doi.org/10.3767/003158516X689819>
  - Réblová M, Hernández-Restrepo M, Fournier J, Nekvindová J (2020) New insights into the systematics of *Bactrodesmium* and its allies and introducing new genera, species and morphological patterns in the Pleurotheciales and Savoryellales (Sordariomycetes). *Studies in Mycology* 95: 415-466. <https://doi.org/10.1016/j.simyco.2020.02.002>
  - Ronquist F, Huelsenbeck JP (2003) MrBayes3: Bayesian phylogenetic inference under mixed models. *Bioinformatics* 19: 1572-1574. <https://doi.org/10.1093/bioinformatics/btg180>
  - Seifert K, Morgan-Jones G, Gams W, Kendrick B (2011) *The genera of Hyphomycetes*. CBS Biodiversity Series, Utrecht, 997 pp.
  - Stamatakis A (2006) RAXML-VI-HPC: maximum likelihood-based phylogenetic analyses with thousands of taxa and mixed models. *Bioinformatics* 22: 2688-2690. <https://doi.org/10.1093/bioinformatics/btl446>
  - Stamatakis A, Hoover P, Rougemont J (2008) A rapid bootstrap algorithm for the RAXML web-servers. *Systematic Biology* 75: 758-771. <https://doi.org/10.1080/10635150802429642>
  - Su HY, Udayanga D, Luo ZL, Manamgoda DS, Zhao YC, Yang J, Liu XY, Mckenzie EH, Zhou DQ, Hyed KD (2015) Hyphomycetes from aquatic habitats in Southern China: Species of *Curvularia* (Pleosporaceae) and *Phragmocephala* (Melanommataceae). *Phytotaxa* 226 (3): 201-216. <https://doi.org/10.11646/phytotaxa.226.3.1>
  - Sun YR, Goonasekara ID, Thambugala KM, Jayawardena RS, Wang Y, Hyde KD (2020) *Distoseptispora bambusae* sp. nov. (Distoseptisporaceae) on bamboo from China and Thailand. *Biodiversity Data Journal* 8: 53678. <https://doi.org/10.3897/BDJ.8.e53678>
  - Vilgalys R, Hester M (1990) Rapid genetic identification and mapping of enzymatically amplified ribosomal DNA from several *Cryptococcus* species. *Journal of Bacteriology* 172: 4238-4246. <https://doi.org/10.1128/jb.172.8.4238-4246.1990>

- Wanasinghe DN, Jones EB, Camporesi E, Mortimer PE, Xu J, Bahkali AH, Hyde KD (2015) The genus *Murispora*. *Cryptogamie, Mycologie* 36: 419-448. <https://doi.org/10.7872/crym/v36.iss4.2015.419>
- Wang GN, Yu XD, Dong W, Bhat DJ, Boonmee S, Zhang D, Zhang H (2019) Freshwater hyphomycetes in *Eurotiomycetes*: a new species of *Minimelanolocus* and a new collection of *Thysanorea papuana* (Herpotrichiellaceae). *Mycological Progress* 18: 511-522. <https://doi.org/10.1007/s11557-019-01473-7>
- Wijayawardene NN, Hyde KD, Al-Ani LK, Tedersoo L, Haelewaters D, Rajeshkumar KC, Zhao RL, Aptroot A, Leontyev DV, Saxena RK, Tokarev YS, Dai DQ, Letcher PM, Stephenson SL, Ertz D, Lumbsch HT, Kukwa M, Issi IV, Madrid H, Phillips AJ, Selbmann L, Pfliegler WP, Horváth E, Bensch K, Kirk P, Kolaříková Z, Raja HA, Radek R, Papp V, Dima B, Ma J, Malosso E, Takamatsu S, Rambold G, Gannibal PB, Triebel D, Gautam AK, Avasthi S, Suetrong S, Timdal E, Fryar SC, Delgado G, Réblová M, Doilom M, Dolatabadi S, Pawłowska J, Humber RA, Kodsueb R, Sánchez-Castrov I, Goto BT, Silva DK, de Souza FA, Oehl F, da Silva GA, Silva IR, Błaszczowski J, Jobim K, Maia LC, Barbosa FR, Fiuza PO, Divakar PK, Shenoy BD, Castañeda-Ruiz RF, Somrithipol S, Karunarathna SC, Tibpromma S, Mortimer PE, Wanasinghe DN, Phookamsak R, Xu J, Wang Y, Fenghua T, Alvarado P, Li DW, Kušan I, Matočec N, Maharachchikumbura SS, Papizadeh M, Heredia G, Wartchow F, Bakhshi M, Boehm E, Youssef N, Hustad VP, Lawrey JD, Santiago AL, Bezerra JD, Souza-Motta CM, Firmino AL, Tian Q, Houbraken J, Hongsanan S, Tanaka K, Dissanayake AJ, Monteiro JS, Grossart HP, Suija A, Weerakoon G, Etayo J, Tsurukau A, Kuhnert E, Vázquez V, Mungai P, Damm U, Li QR, Zhang H, Boonmee S, Y.Z. L, Becerra AG, Kendrick B, Brearley FQ, Motiejūnaitė J, Sharma B, Khare R, Gaikwad S, Wijesundara DS, Tang LZ, He MQ, Flakus A, Rodriguez-Flakus P, Zhurbenko MP, McKenzie EH, Stadler M, Bhat DJ, Liu JK, Raza M, Jeewon R, Nassonova ES, Prieto M, Jayalal RG, Yurkov A, Schnittler M, Shchepin ON, Novozhilov YK, Liu PU, Cavender JC, Kang Y, Mohammad S, Zhang LF, Xu RF, Li YM, Dayarathne MC, Ekanayaka AH, Wen TC, Deng CY, Lateef AA, Pereira OL, Navathe S, Hawksworth DL, Fan XL, Dissanayake LS, Erdoğdu M (2020) Outline of fungi and fungi-like taxa. *Mycosphere* 11: 1060-1456. <https://doi.org/10.5943/mycosphere/11/1/8>

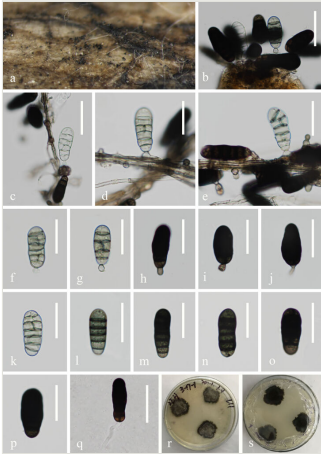


Figure 1.

***Neomonodictys aquatica*** (KUN-HKAS 115806, holotype). **a** Colonies on submerged wood; **b-e** Conidiophores with conidia; **f-j** Conidiogenous cells with conidia; **k-p** Conidia; **q** Germinating conidium; **r, s** Colony on PDA. Scale bars: **b-c, e, k** = 25 μm; **d, f-i, l-p** = 20 μm; **j, q** = 30 μm.



Table 1.

Isolates and sequences used in this study (newly-generated sequences are indicated in bold and with "\*" after species name, the type strains are in bold).

Taxon	Strain	GenBank Accession No.	
		ITS	LSU
<b><i>Adelosphaeria catenata</i></b>	<b>CBS 138679</b>	<b>NR_145396</b>	<b>MH877664</b>
<b><i>Anapleurothecium botulisporum</i></b>	<b>FMR 11490</b>	<b>NR_153582</b>	KY853483
<i>Ascotaiwania mitriformis</i>	HKUCC3706	-	AF132324
<i>Ascotaiwania sawadae</i>	SS00051	HQ446340	HQ446363
<b><i>Bactrodesmiastrum obovatum</i></b>	<b>FMR 6482</b>	<b>NR_152537</b>	FR870266
<i>Bactrodesmiastrum pyriforme</i>	FMR 11931	HE646636	HE646637
<i>Brachysporiella setosa</i>	HKUCC 3713	-	AF132334
<i>Canalisporium caribense</i>	SS03683	GQ390284	GQ390269
<i>Canalisporium elegans</i>	SS00895	GQ390286	GQ390271
<i>Canalisporium exiguum</i>	SS00809	GQ390296	GQ390281
<i>Canalisporium pulchrum</i>	SS03982	GQ390292	GQ390277
<i>Conioscypha japonica</i>	CBS 387.84	-	AY484514
<i>Conioscypha lignicola</i>	CBS 335.93	-	AY484513
<b><i>Conioscypha minutispora</i></b>	<b>CBS 137253</b>	<b>NR_137847</b>	<b>NG_066275</b>
<i>Conioscypha peruviana</i>	ILL 41202	-	<b>NG_058867</b>
<i>Conioscypha varia</i>	CBS 113653	-	AY484512
<b><i>Fuscosporella pyriformis</i></b>	<b>MFLUCC 16-0570</b>	<b>NR_152555</b>	<b>NG_059711</b>
<i>Helicoascotaiwania farinosa</i>	DAOM 241947	JQ429145	JQ429230
<i>Melanotrigonum ovale</i>	MR 3685	KT278726	KT278712
<i>Melanotrigonum ovale</i>	CBS 138744	KT278725	KT278710
<i>Melanotrigonum ovale</i>	CBS 138815	KT278722	KT278711
<b><i>Melanotrigonum ovale</i></b>	<b>CBS 138743</b>	<b>NR_145397</b>	<b>NG_058197</b>
<i>Melanotrigonum ovale</i>	CBS 138742	KT278723	KT278708
<b><i>Mucispora obscuriseptata</i></b>	<b>MFLUCC 15-0618</b>	<b>NR_152556</b>	<b>NG_059709</b>
<b><i>Neomondictys aquatica</i></b> *	<b>KUNCC21-10708</b>	<b>MZ686200</b>	<b>OK245417</b>
<b><i>Neomonodictys muriformis</i></b>	<b>MFLUCC 16-1136</b>	<b>NR_168231</b>	<b>NG_068916</b>
<b><i>Parafuscosporella moniliformis</i></b>	<b>MFLUCC 15-0626</b>	<b>NR_152557</b>	<b>NG_059710</b>
<b><i>Phaeoisaria aquatica</i></b>	<b>MFLUCC 16-1298</b>	<b>NR_160592</b>	<b>NG_066194</b>
<i>Phaeoisaria clematidis</i>	MFLUCC 16-1273	MF399229	MF399246
<i>Phaeoisaria clematidis</i>	DAOM 226789	JQ429155	JQ429231
<i>Phaeoisaria clematidis</i>	MFLUCC 17-1968	MG837022	MG837017
<i>Phaeoisaria clematidis</i>	MFLUCC 17-1341	MF399230	MF399247

<i>Phaeoisaria fasciculata</i>	DAOM 230055	KT278720	KT278706
<b><i>Phaeoisaria fasciculata</i></b>	<b>CBS 127885</b>	<b>NR_ 145395</b>	<b>NG_ 064241</b>
<i>Phaeoisaria guttulata</i>	MFLUCC 17-1965	MG837021	MG837016
<b><i>Phaeoisaria loranthacearum</i></b>	<b>CBS 140009</b>	<b>NR_ 56593</b>	<b>NG_ 064294</b>
<b><i>Phaeoisaria pseudocleematidis</i></b>	<b>MFLUCC 11-0393</b>	<b>NR_ 155648</b>	<b>NG_ 059559</b>
<i>Phaeoisaria sedimenticol</i>	CGMCC 3.14949	MK878380	MK835851
<i>Phaeoisaria sparsa</i>	FMR11939	HF677179	HF677185
<i>Phaeoisaria microspora</i>	MFLUCC 16-0033	MF671987	-
<b><i>Pleurotheciella aquatica</i></b>	<b>MFLUCC 17-0464</b>	<b>NR_ 160591</b>	<b>NG_ 066193</b>
<b><i>Pleurotheciella centenaria</i></b>	<b>DAOM 229631</b>	<b>NR_111709</b>	<b>NG_060098</b>
<b><i>Pleurotheciella lunata</i></b>	<b>MFLUCC 17-0111</b>	<b>NR_160593</b>	<b>NG_066195</b>
<b><i>Pleurotheciella rivularia</i></b>	<b>CBS 125238</b>	<b>NR_111711</b>	<b>NG_057950</b>
<i>Pleurotheciella rivularia</i>	CBS 125237	JQ429161	JQ429233
<i>Pleurotheciella fusiformis</i>	KUMCC 15-0192	MF399234	MF399251
<i>Pleurotheciella fusiformis</i>	MFLUCC 17-0113	MF399233	MF399250
<i>Pleurotheciella fusiformis</i>	MFLUCC 17-0115	MF399232	MF399249
<i>Pleurotheciella fusiformis</i>	MFLUCC 16-1356	MF399235	MF399252
<i>Pleurotheciella guttulata</i>	KUMCC 15-0442	MF399239	MF399256
<b><i>Pleurotheciella guttulata</i></b>	<b>KUMCC 15-0296</b>	<b>NR_160594</b>	<b>NG_066399</b>
<i>Pleurotheciella krabiensis</i>	MFLUCC 16-0852	MG837018	MG837013
<i>Pleurotheciella krabiensis</i>	MFLUCC 16-0858	MG837019	MG837014
<b><i>Pleurotheciella saprophytica</i></b>	<b>MFLUCC 16-1251</b>	<b>NR_160595</b>	<b>NG_066196</b>
<b><i>Pleurotheciella submersa</i></b>	<b>MFLUCC 17-1709</b>	<b>NR_160596</b>	MF399260
<i>Pleurotheciella submersa</i>	DLUCC 0739	MF399242	MF399259
<i>Pleurotheciella submersa</i>	MFLUCC 17-0456	MF399244	MF399261
<i>Pleurotheciella tropica</i>	MFLUCC 16-0867	MG837020	MG837015
<i>Pleurotheciella uniseptata</i>	KUMCC 15-0407	MF399231	MF399248
<b><i>Pleurothecium aquaticum</i></b>	<b>MFLUCC 17-1331</b>	<b>NR_160597</b>	<b>NG_066197</b>
<b><i>Pleurothecium floriforme</i></b>	<b>MFLUCC 15-0628</b>	<b>NR_156614</b>	<b>NG_059791</b>
<i>Pleurothecium obovoideum</i>	CBS 209.95	EU041784	EU041841
<i>Pleurothecium pulneyense</i>	MFLUCC 16-1293	-	MF399262
<i>Pleurothecium recurvatum</i>	CBS 138686	KT278727	KT278715
<i>Pleurothecium recurvatum</i>	CBS 138747	KT278728	KT278714
<i>Pleurothecium recurvatum</i>	CBS 131646	JQ429150	JQ429236
<i>Pleurothecium recurvatum</i>	CBS 131272	JQ429149	JQ429237
<i>Pleurothecium recurvatum</i>	CBS 101581	JQ429148	-
<i>Pleurothecium semifecundum</i>	CBS 131482	JQ429158	JQ429239

<b><i>Pleurothecium semifecundum</i></b>	<b>CBS 131271</b>	<b>NR_111710</b>	<b>NG_057951</b>
<i>Savoryella aquatica</i>	SS 03801	HQ446349	HQ446372
<i>Savoryella lignicola</i>	NF00204	HQ446357	HQ446378
<i>Savoryella longispora</i>	SAT00322	HQ446359	HQ446380
<i>Savoryella paucispora</i>	SAT00866	-	-
<i>Savoryella verrucosa</i>	SS 00052	HQ446353	HQ446374
<i>Sterigmatobotrys macrocarpa</i>	PRM 915682	JQ429153	-
<i>Sterigmatobotrys macrocarpa</i>	DAOM 230059	-	GU017316
<i>Sterigmatobotrys rudis</i>	DAOM 229838	JQ429152	JQ429241
<i>Triadelphia uniseptata</i>	DAOMC 250376	-	KT278718