

Four new species of *Metapocyrtus* Heller, 1912 (Coleoptera, Curculionidae, Entiminae, Pachyrhynchini) from Mindanao Island, Philippines

Analyn Anzano Cabras[‡], Milton Norman Medina[‡]

[‡] University of Mindanao, Davao City, Philippines

Corresponding author: Analyn Anzano Cabras (ann.cabras24@umindanao.edu.ph)

Academic editor: Jennifer C. Girón Duque

ZooBank: [urn:lsid:zoobank.org:pub:27D31EC2-00FB-4B8A-9383-46FE60572BB8](https://www.zoobank.org/pub/27D31EC2-00FB-4B8A-9383-46FE60572BB8)

Abstract

Background

The genus *Metapocyrtus* Heller, 1912 is the most speciose and complex amongst the tribe Pachyrhynchini with seven subgenera and more than 200 described species. The genus is endemic to the Philippines and remains largely unknown particularly in the less explored areas or mountains.

New information

Four new species of *Metapocyrtus* Heller, 1912 (Coleoptera, Curculionidae, Entiminae, Pachyrhynchini), are described from Mindanao Island, Philippines. Brief bionomical notes and mimicry with their sympatric beetles and other insect counterparts are also reported.

Keywords

Davao de Oro, mimicry, Mindanao Island, Pachyrhynchini, urban biodiversity, weevils

Introduction

The genus *Metapocyrtus* Heller 1912, belonging to the tribe Pachyrhynchini Schönherr 1826, is the most diverse and complex endemic member of the tribe, with more than 200 described species. The tribe Pachyrhynchini contains 18 genera with more than 500

described species distributed from the Philippines to Papua New Guinea, Australia, Taiwan, Japan and Indonesia (Schönherr 1826, Alonso-Zarazaga and Lyal 1999) and has its centre of diversity in the Philippines. The general diagnostic characters of this tribe include having mandibles without a scar or lasting appendage on the exterior surface, evenly arcuate at sides; antennal scrobes lateral, curving downwards in front of eyes at sides of rostrum; elytra with rounded humeri; hind coxae broadly contiguous with elytra at sides (Morimoto et al. 2006). *Metapocyrtus* is easily distinguished from other pachyrhynchines by the following characteristics: “Rostrum apically not swollen, basally with a more or less strongly pronounced transverse groove; scape of antenna reaching at least to or beyond hind margin of eye.” (Schultze 1925, p. 135). Currently, the genus is divided into seven subgenera (i.e. *Artapocyrtus* Heller, *Dolichocephalocyrtus* Schultze, *Metapocyrtus* Heller, s. str., *Orthocyrtus* Heller, *Sclerocyrtus* Heller, *Sphenomorphaidea* Heller and *Trachycyrtus* Heller), based on the combined characteristics of the rostrum, pronotum and body (Schultze 1925, Yap and Gapud 2007). Studies about this taxon have increased recently with several species descriptions done by both local and foreign workers (Cabras et al. 2018, Cabras et al. 2019, Bollino et al. 2020, Cabras et al. 2021). Despite the large advancement of the studies of this genus in the past years, the taxonomic classification of this group is still chaotic, with many ill-defined subgenera and species groups which need thorough review.

In our examination of the specimens at the Coleoptera Research Center, four species were found to be novel to science. Three of the new species are tentatively assigned under subgenus *Metapocyrtus* Heller, based on the following characters elucidated by Yap and Gapud (2007): a) head and rostrum short, 0.75 to 0.85 times as long as wide, b) rostrum with a V-shaped ridge forming a shallow triangular depression, c) rostrum with rounded dorsolateral edges, d) anterior margin of pronotum truncate and strongly pronounced and e) elytra laterally elliptical or dorsally ovate. Meanwhile, one of the new species is not assigned any subgeneric classification. In this paper, the four new species are described with brief notes on their ecology and mimetic relationships with other weevils and insects. Due to the little or almost no use of the female genitalia in identifying and characterising the different species of Pachyrhynchini (Bollino et al. 2020), we avoided illustrating the said anatomical parts.

Materials and methods

Prior to collection, Gratuitous Permits were obtained from the Department of Environment and Natural Resources. For collection, the specimens deposited in the University of Mindanao Coleoptera Research Center were collected through sheet beating and hand picking and killed in vials with ethyl acetate. Morphological characters were observed under Luxeo 4D and Nikon SMZ745T stereomicroscopes. The illustrations, as well as the treatment of the genitals, were identical to those described by Yoshitake (2011). Images of the habitus and genitalia were taken, using a Nikon D5300 digital camera with a Sigma 18–250 macro lens. All images were stacked and processed using a licensed version of

Helicon Focus 6.7.0 and Photoshop CS6 Portable software. Label data are indicated verbatim. Measurements and labels mentioned in this paper are abbreviated as follows:

/ indicates different lines of text in a label

// indicates different labels on the same specimen.

â arithmetic mean rounded to one decimal place;

LB body length, from the apical margin of pronotum to the apex of elytra;

LE elytral length, from the level of the basal margins to the apex of elytra;

LP pronotal length, from base to apex along the mid-line;

LR length of rostrum;

WR maximum width across the rostrum;

WE maximum width across the elytra;

WP maximum width across the pronotum.

Comparative materials and specimens, used in the study, are deposited in the following institutional collections:

DUBC Daugavpils University Beetle Collection, Daugavpils, Latvia;

SMTD Senckenberg Natural History Collections, Dresden, Germany;

UMCRC University of Mindanao Coleoptera Research Center, Davao City, Philippines.

Taxon treatments

Metapocyrtus jumawani Cabras & Medina, 2021, sp. nov.

- ZooBank [urn:lsid:zoobank.org:act:667bb1ca-a668-44f9-8c00-c1c21c7ddaf8](https://zoobank.org/act:667bb1ca-a668-44f9-8c00-c1c21c7ddaf8)

Materials

Holotype:

- a. scientificName: *Metapocyrtus jumawani*; kingdom: Animalia; phylum: Arthropoda; class: Insecta; order: Coleoptera; family: Curculionidae; taxonRank: species; nomenclaturalCode: ICZN; genus: *Metapocyrtus*; specificEpithet: *jumawani*; scientificNameAuthorship: Cabras & Medina, 2021; continent: Asia; islandGroup: Mindanao; country: Philippines; countryCode: PHL; stateProvince: Davao de Oro; municipality: Maragusan; locality: Langgawisan; samplingProtocol: handpicking; year: 2018; month: March; habitat: riparian; individualCount: 1; sex: male; lifeStage: adult; preparations: card-mounted; recordedBy: Local collector; disposition: in collection;

identifiedBy: AA Cabras; institutionID: UM; collectionID: UM-CRC; occurrenceID: 25BF3CFF-16DE-59A9-AA40-78024A405376

Paratypes:

- a. scientificName: *Metapocyrtus jumawani*; kingdom: Animalia; phylum: Arthropoda; class: Insecta; order: Coleoptera; family: Curculionidae; taxonRank: species; nomenclaturalCode: ICZN; genus: *Metapocyrtus*; specificEpithet: *jumawani*; scientificNameAuthorship: Cabras & Medina, 2021; continent: Asia; islandGroup: Mindanao; country: Philippines; countryCode: PHL; stateProvince: Davao de Oro; municipality: Maragusan; locality: Langgawisan; samplingProtocol: handpicking; year: 2018; month: March; habitat: riparian; individualCount: 2; sex: male; lifeStage: adult; preparations: card-mounted; recordedBy: Local collector; disposition: in collection; identifiedBy: AA Cabras; institutionID: UM; collectionID: UM-CRC; occurrenceID: 0E8A0194-4B43-5717-926E-741353B0EB5A
- b. scientificName: *Metapocyrtus jumawani*; kingdom: Animalia; phylum: Arthropoda; class: Insecta; order: Coleoptera; family: Curculionidae; taxonRank: species; nomenclaturalCode: ICZN; genus: *Metapocyrtus*; specificEpithet: *jumawani*; scientificNameAuthorship: Cabras & Medina, 2021; continent: Asia; islandGroup: Mindanao; country: Philippines; countryCode: PHL; stateProvince: Davao de Oro; municipality: Maragusan; locality: Langgawisan; samplingProtocol: beating sheet; year: 2018; month: March; habitat: riparian; individualCount: 4; sex: female; lifeStage: adult; preparations: card-mounted; recordedBy: Local collector; disposition: in collection; identifiedBy: AA Cabras; institutionID: UM; collectionID: UM-CRC; occurrenceID: AAC2C9A4-431A-5DC6-AC3B-BF467795452C

Description

Male. Dimensions (in mm): N = 5. LB 7.4–8.9 (holotype 8.2, \hat{a} : 8.5), LR 1.1–2.0 (2.0, \hat{a} : 1.6), WR 1.1–1.2 (1.2, \hat{a} : 1.2), LP 2.8–3.2 (3.2, \hat{a} : 3.0), WP 2.8–3.4 (3.4, \hat{a} : 3.0), LE 4.6–5.7 (5.0, \hat{a} : 5.5), WE 2.3–4.5 (4.0, \hat{a} : 3.7).

Habitus as shown in Fig. 1A–D.

Integument black. Body surface, rostrum, head and underside weakly lustrous.

Body subglabrous. Head subglabrous with sparse and minute pubescence; forehead between eyes slightly depressed, covered with metallic, golden-yellow, round scales; lateral parts with elongated patch of golden-yellow round scales below the eyes and metallic golden-yellow piliform scales towards ventral side; median groove distinct. Rostrum weakly rugose with sparse, minute pubescence, slightly longer than wide (LR/WR 1.66), dorsum bears minute, brownish hairs; baso-lateral surface with golden-yellow piliform scales which become longer towards anterolateral surface; apex with long, yellowish hairs; transverse basal groove distinct; dorsal surface convex. Eyes medium-sized and feebly convex. Antenna moderately clavate, scape slightly shorter than funicle, moderately covered with fine, long, recumbent, brownish hairs. Funicular antennomeres I and II almost of the same length, nearly three times longer than wide; antennomeres III–VII slightly longer than wide; club subovoid, nearly three times longer than wide. Prothorax subglobular, as long as wide (LP/WP 1.0), coarsely granulated with sparse minute pubescence, widest at mid-length,

weakly convex, with a faint groove along midline reaching only mid-length and with the following scaly markings of metallic golden-yellow, round scales: a) thin band approximately 1/6 length of pronotum along apical margin, b) transverse band across entire width just slightly behind mid-length and c) lateroventral stripe before the coxa, confluent with anterior marginal band and transverse band at mid-length. Elytra short, subovate (LE/WE 1.25), wider and longer than prothorax (WE/WP 1.18, LE/LP 1.56), subglabrous, weakly convex, coarsely punctured, each puncture with light-coloured, short seta; each elytron with the following scaly markings; a) broad basal band nearly twice as broad as pronotal bands extending from suture to lateral margin, b) broad transverse medial band across entire width from suture towards lateral margin, c) subtriangular patch at apex and d) band along lateral margin confluent with basal and medial bands and subtriangular apical patch. Apical declivity along suture without scales, but with sparse golden-coloured suberect short hairs which continue and become denser towards apex. Legs with moderately clavate femora. Femora covered with recumbent brown hairs. Tibiae weakly serrate along inner margin with suberect, brown bristles along inner margin and subrecumbent brown hairs along outer margin. Fore and mid-tibiae bearing mucro at apex. All tarsomeres densely pubescent dorsally. Coxa with light-coloured recumbent hairs. Mesoventrite with sparse light-coloured, recumbent hairs. Metaventrite and ventrite I moderately depressed on disc, with light-coloured, adpressed hairs and yellow ochre, round scales towards lateral margins. Ventrites II–IV with sparse light-coloured, adpressed hairs. Ventrite V very weakly convex, densely punctured and with dense, long, light-brown adpressed hairs.

Male genitalia as shown in Fig. 2A–C. Aedeagal body short and stout and bent towards the apex (in lateral view), apicad slightly subangulate, apex acute; aedeagal apodemes twice longer than aedeagal body.

Female. Dimensions (in mm): N = 4. LB 8.5–9.5 (\hat{a} : 8.75), LR 1.5–1.8 (\hat{a} : 1.58), WR 1.2, LP 2.8–3.0 (\hat{a} : 2.85), WP 2.9–3.0 (\hat{a} : 2.93), LE 5.7–6.5 (\hat{a} : 5.9), WE 4.0–4.5 (\hat{a} : 4.13).

Females differ from males by the following characters: a) pronotum slightly longer than wide in females (LP/WP 0.96–1.0) than in males, b) elytra slightly longer and wider (LE/WE 1.43–1.44, WE/WP 1.38–1.5, LE/LP 2.03–2.17) than in males, c) elytral apex more pointed and with denser hairs at apex and d) posterior elytral marking imperfectly subtriangular. Otherwise, females similar to males.

Diagnosis

Metapocyrtus jumawani sp. nov. is related to *Metapocyrtus tagabawa* Cabras, Bollino & Medina, 2020 from Toril, Davao City and Wao, Lanao del Sur and *Metapocyrtus latifasciatus* Cabras, Bollino & Medina, 2020 from Cotabato, Sarangani and Davao del Sur, but differs on the broader pronotal and elytral markings and the shape of the aedeagus. *M. jumawani* sp. nov. differs from *M. tagabawa* for having broader transverse pronotal mark and basal and medial transverse bands, as well as banded

triangular marks at the apical third of the elytra; whereas it differs from *M. latifasciatus* by having thick transverse basal and medial bands in the elytra instead of one full broad basal band covering almost half of each elytron. At the moment, as the real validity and repartition amongst *Metapocyrtus* subgenera requires a complete revision, thus we avoided subgeneric assignment for this species.

Etymology

The specific epithet is named after Kim Jumawan (Philippines) for his camaraderie and contribution in helping collect the species described herein.

Distribution

Metapocyrtus jumawani sp. nov. is known, so far, only from the Province of Davao de Oro.

***Metapocyrtus (Metapocyrtus) ged* Cabras & Medina, 2021, sp. nov.**

- ZooBank [urn:lsid:zoobank.org:act:ef162a92-14a3-4bc0-8b8d-2d167b56307b](https://www.zoobank.org/act:ef162a92-14a3-4bc0-8b8d-2d167b56307b)

Materials

Holotype:

- a. scientificName: *Metapocyrtus ged*; kingdom: Animalia; phylum: Arthropoda; class: Insecta; order: Coleoptera; family: Curculionidae; taxonRank: species; nomenclaturalCode: ICZN; genus: *Metapocyrtus*; specificEpithet: *ged*; scientificNameAuthorship: Cabras & Medina, 2021; continent: Asia; islandGroup: Mindanao; country: Philippines; countryCode: PHL; stateProvince: Davao del Sur; municipality: Davao City; locality: Toril; samplingProtocol: beating sheet; year: 2019; month: May; habitat: old growth secondary forest; individualCount: 1; sex: male; lifeStage: adult; preparations: card-mounted; recordedBy: Local collector; disposition: in collection; identifiedBy: AA Cabras; institutionID: UM; collectionID: UM-CRC; occurrenceID: 3AB84D23-DB6E-55BD-ADFA-C39B1E45CB53

Paratypes:

- a. scientificName: *Metapocyrtus ged*; kingdom: Animalia; phylum: Arthropoda; class: Insecta; order: Coleoptera; family: Curculionidae; taxonRank: species; nomenclaturalCode: ICZN; genus: *Metapocyrtus*; specificEpithet: *ged*; scientificNameAuthorship: Cabras & Medina, 2021; continent: Asia; islandGroup: Mindanao; country: Philippines; countryCode: PHL; stateProvince: Davao del Sur; municipality: Davao City; locality: Carmen; samplingProtocol: hand picking; year: 2019; month: July; habitat: old growth secondary forest; individualCount: 5; sex: male; lifeStage: adult; preparations: card-mounted; recordedBy: Local collector; disposition: in collection; identifiedBy: AA Cabras; institutionID: UM; collectionID: UM-CRC; occurrenceID: C9C0C867-FA37-58E3-B342-7915C714FF3C
- b. scientificName: *Metapocyrtus ged*; kingdom: Animalia; phylum: Arthropoda; class: Insecta; order: Coleoptera; family: Curculionidae; taxonRank: species; nomenclaturalCode: ICZN; genus: *Metapocyrtus*; specificEpithet: *ged*; scientificNameAuthorship: Cabras & Medina, 2021; continent: Asia; islandGroup: Mindanao; country: Philippines; countryCode: PHL; stateProvince: Davao del Sur; municipality: Davao City; locality: Toril; samplingProtocol:

- beating sheet; year: 2019; month: May; habitat: old growth secondary forest; individualCount: 2; sex: female; lifeStage: adult; preparations: card-mounted; recordedBy: Local collector; disposition: in collection; identifiedBy: AA Cabras; institutionID: UM; collectionID: UM-CRC; occurrenceID: 3E1D072B-4611-5FB3-97ED-C3476F6F1FB6
- c. scientificName: *Metapocyrtus ged*; kingdom: Animalia; phylum: Arthropoda; class: Insecta; order: Coleoptera; family: Curculionidae; taxonRank: species; nomenclaturalCode: ICZN; genus: *Metapocyrtus*; specificEpithet: *ged*; scientificNameAuthorship: Cabras & Medina, 2021; continent: Asia; islandGroup: Mindanao; country: Philippines; countryCode: PHL; stateProvince: Davao del Sur; municipality: Davao City; locality: Carmen; samplingProtocol: hand picking; year: 2019; month: July; habitat: old growth secondary forest; individualCount: 1; sex: female; lifeStage: adult; recordedBy: Local collector; identifiedBy: AA Cabras; institutionID: UM; collectionID: UM-CRC; occurrenceID: 3F8F3440-5DAE-5CEE-BF5E-98A7972FFF9C

Description

Male. Dimensions (in mm): N = 2. LB 7.8–8.1 (holotype 7.8, \hat{a} : 7.95), LR 1.2–1.3 (1.3, \hat{a} : 7.95), WR 1.1–1.2 (1.1, \hat{a} : 1.05), LP 3.0–3.1 (3.0, \hat{a} : 3.05), WP 2.8–2.9 (2.8, \hat{a} : 2.85), LE 4.8–5.0 (4.8, \hat{a} : 4.9), WE 3.5–3.7 (3.5, \hat{a} : 4.9).

Habitus as shown in Fig. 3A–D.

Integument of elytra black; integument of pronotum, head, scape and legs dark ferruginous; funicle, tarsi, rostrum black. Body surface, rostrum and head weakly lustrous and underside subopaque.

Body subglabrous. Head subglabrous, sparsely, minutely pubescent; lateroventral parts with yellow ochre and turquoise round and elliptic scales interspersed with light-coloured recumbent piliform scales, forehead between eyes slightly depressed, covered with metallic, yellow ochre and turquoise round and elliptic scales; median groove indistinct. Rostrum strongly rugose especially in basal half, sparsely, minutely pubescent, slightly longer than wide (LR/WR 1.18), dorsum bearing V-shape ridge and minute, light-coloured hairs; lateral surface with recumbent light-coloured hairs and long, light-brown hairs at the anterolateral margin; transverse basal groove distinct, beset with sparse, light yellow ochre and turquoise round scales; dorsal surface moderately convex. Eyes medium-sized and feebly convex. Antenna clavate, scape as long as funicle, moderately covered with fine, light-coloured hairs. Funicular antennomeres I and II of the same length, nearly three times longer than wide; antennomeres III–VII as long as wide; club subovoid, nearly three times longer than wide. Prothorax globular, slightly longer than wide (LP/WP 1.07), weakly granulated with sparse pubescence, widest at mid-length, moderately convex, with a faint groove along mid-line and with the following scaly markings of metallic yellow ochre, turquoise and light blue, round scales: a) thin band approximately 1/6 length of pronotum along anterior margin, b) thin transverse band at mid-length, sometimes interrupted at centre and c) lateroventral stripe before the coxa confluent with the anterior and median bands. Elytra subelliptical (LE/WE 1.37), slightly wider and twice longer than prothorax (WE/WP 1.25, LE/LP 1.6), subglabrous, striate-punctate, weakly

convex, with very minute and sparse light-coloured pubescence. Elytra with the following scaly markings of yellow ochre and turquoise, round scales: a) basal transverse band from suture towards the lateral sides, b) median transverse band, c) subtriangular patch on apical third, d) thick band along lateral margin confluent with basal band, median band and triangular patch at apical third and e) faint stripe along suture. The elytral marks seem to create four squares on the dorsum of the elytra. Apex of elytra with erect bluish piliform scales and light-coloured hairs. Legs with strongly clavate femora. Femora dark ferruginous, but black towards apical half, covered with bluish recumbent piliform scales. Tibiae dark ferruginous, but black towards apex, covered with black piliform scales towards outer surface and black erect hairs on inner margin; serrate along inner margin. Fore and mid-tibiae bearing mucro at apex. Tarsomeres covered with pubescence dorsally. Coxae with light-coloured to greenish recumbent piliform scales. Mesoventrite with sparse and minute light-coloured hairs. Metaventrite with light-coloured suberect hairs and pale yellow to turquoise, round scales at lateral sides. Ventrite I faintly depressed on disc with light-coloured, suberect hairs and sparse light-coloured piliform scales towards sides. Ventrite II with short, light-coloured, suberect hairs and sparse light-coloured piliform scales towards sides. Ventrites III–IV with sparse, light-coloured, short hairs. Ventrite V flattened, apical half finely densely punctured with suberect hairs.

Male genitalia as shown in Fig. 4A-C. Aedeagal body short and slender and apicad bluntly produced with acute apex; aedeagal apodemes twice longer than aedeagal body.

Female. Dimensions (in mm): N = 2. LB 9.0–9.3 (\hat{a} : 9.2), LR 1.0–1.1 (\hat{a} : 1.05), WR 1.2–1.4 (\hat{a} : 1.3), LP 3.0–3.1 (\hat{a} : 3.05), WP 3.0–3.1 (\hat{a} : 3.05), LE 6.0–6.2 (\hat{a} : 6.1), WE 4.0–4.2 (\hat{a} : 4.1).

Females differ from males by the following characters: a) pronotum more convex, b) elytra obovate (LE/WE 1.47–1.62), longer and wider (WE/WP 1.33–1.35, LE/LP 2.0) than in males, c) apex of elytral declivity with tuft of bristles and e) ventrite I flattened or slightly convex on disc. Otherwise, females are similar to males.

Diagnosis

Metapocyrtus ged sp. nov. belongs to the subgenus *Metapocyrtus* s.s. for its rostrum with V-shape ridge and rounded dorsolateral edges, as well as elytra laterally elliptical or dorsally ovate. The species is distinct from the rest of *Metapocyrtus* s.s. by its unique elytral ornamentation.

Etymology

The specific epithet *ged* is after the acronym of Gloria E. Detoya, Chief Operating Officer/Quality Management Representative of the University of Mindanao for her unwavering support to the Coleoptera Research Center.

Distribution

The new species is, so far, known only in the Province of Davao del Sur.

Metapocyrtus (Metapocyrtus) flavomaculata sp. nov.

- ZooBank [urn:lsid:zoobank.org:act:54054f64-a5d5-457e-b40b-37165b3588f4](https://zoobank.org/act:54054f64-a5d5-457e-b40b-37165b3588f4)

Materials

Holotype:

- a. scientificName: *Metapocyrtus flavomaculata*; kingdom: Animalia; phylum: Arthropoda; class: Insecta; order: Coleoptera; family: Curculionidae; taxonRank: species; nomenclaturalCode: ICZN; genus: *Metapocyrtus*; specificEpithet: *flavomaculata*; scientificNameAuthorship: Cabras & Medina, 2021; continent: Asia; islandGroup: Mindanao; country: Philippines; countryCode: PHL; stateProvince: Davao del Sur; municipality: Davao City; locality: Lamanan; samplingProtocol: handpicking; year: 2018; month: July; habitat: old growth secondary forest; individualCount: 1; sex: male; lifeStage: adult; preparations: card-mounted; recordedBy: Local collector; disposition: in collection; identifiedBy: AA Cabras; institutionID: UM; collectionID: UM-CRC; occurrenceID: E2E5E354-9EFA-5BD7-B8F0-D2699C34E22D

Paratype:

- a. scientificName: *Metapocyrtus flavomaculata*; kingdom: Animalia; phylum: Arthropoda; class: Insecta; order: Coleoptera; family: Curculionidae; taxonRank: species; nomenclaturalCode: ICZN; genus: *Metapocyrtus*; specificEpithet: *flavomaculata*; scientificNameAuthorship: Cabras & Medina, 2021; continent: Asia; islandGroup: Mindanao; country: Philippines; countryCode: PHL; stateProvince: Davao del Sur; municipality: Davao City; locality: Lamanan; samplingProtocol: handpicking; year: 2018; month: July; habitat: old growth secondary forest; individualCount: 5; sex: female; lifeStage: adult; preparations: card-mounted; recordedBy: Local collector; disposition: in collection; identifiedBy: AA Cabras; institutionID: UM; collectionID: UM-CRC; occurrenceID: 0F613DD2-9FB0-54D2-B1D7-AC0C5B776C11

Description

Male. Dimensions (in mm): N = 2. LB 6.8–7.1 (holotype 10.9, \hat{a} : 10.75), LR 1.0–1.1 (1.0, \hat{a} : 1.05), WR 1.0–1.1 (1.0, \hat{a} : 1.05), LP 2.0–2.1 (2.0, \hat{a} : 2.05), WP 2.0–2.1 (2.0, \hat{a} : 2.05), LE 4.8–5.0 (4.8, \hat{a} : 4.9), WE 3.0–3.2 (3.0, \hat{a} : 3.1).

Habitus as shown in Fig. 5B and D.

Integument black. Body surface, rostrum, head and underside with weak lustre.

Body subglabrous. Head subglabrous, sparsely, very minutely pubescent; forehead between eyes slightly depressed and covered with metallic, light-yellow ochre, round scales; lateral parts with light-yellow ochre, round scales behind eye interspersed with metallic yellow-green, hairlike, elliptical scales; median groove distinct. Rostrum sparsely, minutely pubescent, slightly longer than wide (LR/WR 1.33), dorsum

bearing minute, light-coloured recumbent hairs; lateral surface with metallic, yellow-green hair-like scales and long, light-coloured hairs towards anterolateral margin; transverse basal groove distinct; dorsal surface weakly convex with faint V-shaped ridge. Eyes medium-sized and moderately convex. Antenna moderately clavate, scape slightly shorter than funicle, moderately covered with fine, light-coloured hairs. Funicular antennomeres I and II almost of the same length, nearly three times longer than wide; antennomeres III–VII slightly longer than wide; club subovoid, nearly three times longer than wide. Prothorax subglobular, as long as wide (LP/WP 1.0), faintly punctured with sparse minute hairs, widest at mid-length, weakly convex and with the following scaly markings of metallic light yellow ochre and pale green, round scales: a) two medium-sized spots on basal parts, b) two medium-sized spots along apical margin and c) lateroventral stripe before the coxa. Elytra strongly ovate (LE/WE 1.6), wider and longer than prothorax (WE/WP 1.5, LE/LP 2.4), black, subglabrous, moderately convex, coarsely punctured. Each elytron with the following markings of metallic light-yellow ochre and pale green round scales: a) two sub-basal spots, b) three spots slightly before mid-length, c) three spots along apical third and d) one short apical stripe. Suture along apical declivity with light-coloured piliform scales becoming denser towards apex. Legs with strongly clavate femora. Femora covered with recumbent light-bluish hair-like scales. Tibiae covered with suberect, light-coloured bristles along inner margin and light-coloured recumbent hairs on outer margin; weakly serrate along inner edge. Fore tibiae bearing mucro at apex. Tarsomeres covered with pubescence dorsally. Coxae with light-coloured suberect hair-like scales. Mesoventrite covered with suberect light-coloured hairs. Metaventrite and ventrite I slightly depressed with light-coloured, adpressed bristles and light-yellow ochre, round scales at lateral sides. Ventrites II–V with light-coloured, adpressed bristles. Ventrite V flattened, smooth with dense, recumbent yellow-ochre hairlike-scales.

Male genitalia as shown in Fig. 6A–C. Aedeagal body short and slender and apicad sharply produced with acute apex; aedeagal apodemes 2.5 longer than aedeagal body.

Female. Dimensions (in mm): N = 6. LB 7.6–8.5 (\hat{a} : 8.2), LR 1.0–1.2 (\hat{a} : 1.13), WR 0.8–1.0 (\hat{a} : 0.93), LP 2.1–2.5 (\hat{a} : 2.37), WP 2.4–2.8 (\hat{a} : 2.67), LE 5.5–6.0 (\hat{a} : 5.83), WE 4.0–4.2 (\hat{a} : 4.13).

Females differ from males by the following characters: a) pronotum slightly shorter than wide in males (LP/WP 0.88–0.89), b) pronotum subtruncate, c) elytra longer and wider (LE/WE 1.38–1.43, WE/WP 1.5–1.67, LE/LP 2.4–2.62) than in males and with oblique faint ridge on dorsolateral surface before mid-length, d) presence of tuft of piliform scales on elytral declivity and e) elytral apex with triangular projection. Otherwise mentioned, females similar to males.

Diagnosis

Metapocyrtus (Metapocyrtus) flavomaculata sp. nov. differs from all other species of the subgenus for its unique elytral ornamentation consisting of yellow ochre spots. It bears some superficial resemblance to *Metapocyrtus (Metapocyrtus) worcesteri* Schultze, 1925 from Zamboanga Province, but can be easily distinguished by the shape of the rostrum and pronotum, the presence of four spots in the pronotum (two at basal parts and two along apical margin), compared to the two spots at mid-length of *M. (M.) worcesteri*. The presence of an oblique ridge on the dorsolateral surface before mid-length in the elytra of females of *Metapocyrtus (Metapocyrtus) flavomaculata* sp. nov. also distinguishes it.

Etymology

Etymology. Latin, flavus = yellow; maculata = spotted. The Latin name refers to the yellow spots on the elytra.

Distribution

The new species is known, so far, in Davao City and Bukidnon.

***Metapocyrtus (Metapocyrtus) pseudahirakui* Cabras & Medina, 2021, sp. nov.**

- ZooBank [urn:lsid:zoobank.org:act:7f58a8b0-4f64-4f23-a798-2c3d377e9c61](https://doi.org/10.3896/abx.7f58a8b0-4f64-4f23-a798-2c3d377e9c61)

Material

Holotype:

- a. scientificName: *Metapocyrtus pseudahirakui*; kingdom: Animalia; phylum: Arthropoda; class: Insecta; order: Coleoptera; family: Curculionidae; taxonRank: species; nomenclaturalCode: ICZN; genus: *Metapocyrtus*; specificEpithet: *pseudahirakui*; scientificNameAuthorship: Cabras & Medina, 2021; continent: Asia; islandGroup: Mindanao; country: Philippines; countryCode: PHL; stateProvince: Bukidnon; municipality: Lantapan; samplingProtocol: Beating sheet; year: 2018; month: July; habitat: old growth primary forest; individualCount: 1; sex: female; lifeStage: adult; preparations: card-mounted; recordedBy: Local collector; disposition: in collection; identifiedBy: AA Cabras; institutionID: UM; collectionID: UM-CRC; occurrenceID: 238E60D1-9D09-5D26-8234-CBCBE9F921C3

Description

Female. Dimensions (in mm): LB 10.2, LR 1.0, WR 1.0, LP 3.2, WP 3.2, LE 7.0, WE 4.8, N = 1.

Habitus as shown in Fig. 7.

Integument black. Body surface, rostrum, head and underside with weak lustre.

Body subglabrous. Head subglabrous, sparsely, minutely pubescent; forehead between eyes flattish, covered with metallic, golden-yellow and round scales; median groove barely distinct; lateral parts behind eyes with golden-yellow and pale green round scales interspersed with hair-like scales of similar colours. Rostrum sparsely, minutely pubescent, slightly longer than wide (LR/WR 1.33), dorsum and lateral surface bearing minute, recumbent, yellowish hairlike-scales and anterolateral margin with longer, light-brown hairs; transverse basal groove distinct; basal half with pronounced V-shaped ridge beset with metallic golden-yellow, round scales. Eyes medium-sized and feebly convex. Antenna moderately covered with fine, light-coloured hairs. Funicular antennomeres I and II almost of the same length, nearly three times longer than wide. Prothorax subglobular, as long as wide (LP/WP 1.0), mostly punctured, coarsely rugose and punctured especially along middle of dorsum, weakly convex, with distinct mid-line groove. Pronotum with the following scaly markings of metallic golden-yellow and pale green, round scales: a) thin transverse band approximately one seventh of the length of pronotum at anterior margin, b) transverse band across entire width at mid-length slightly thicker than anterior band, nearly confluent with anterior band at middle of dorsum and c) lateroventral stripe before coxa, confluent with anterior and median bands. Elytra short ovate (LE/WE 1.46), wider and longer than prothorax (WE/WP 1.5, LE/LP 2.19), black, subglabrous, strongly convex; coarsely punctured with very minute and sparse light-coloured, short seta; slightly flattish on basal half of dorsum and with steep apical declivity. Elytra with eight longitudinal scaly stripes of metallic golden-yellow and pale green, round scales beginning shortly from anterior margin and extending towards apex and one longitudinal parasutural stripe from before mid-length towards apical declivity. Longitudinal stripe at striae II extending from anterior margin to apical declivity; stripe at striae II extending from anterior margin to apex of elytra, confluent with stripe at lateral margin; stripe at striae III–VII confluent at apical quarter. Base of apical declivity with brownish tuft of hairs on each elytron. Legs with strongly clavate femora. Femora covered with recumbent light-bluish hair-like scales. Tibiae covered with suberect, light-coloured bristles along inner margin and light coloured recumbent hairs on outer margin; weakly serrate along inner edge. Fore and mid-tibiae bearing mucro at apex. Tarsomeres covered with pubescence dorsally. Coxae with recumbent light-coloured hair-like scales. Mesoventrite covered with metallic and greenish, adpressed hair-like scales. Metaventrite slightly depressed on disc with subrecumbent hair-like scales and light-yellow ochre and pale green round scales at lateral sides. Ventrite I depressed on disc with light-coloured, adpressed hairs. Ventrites II–V with sparse, light-coloured, short hairs. Ventrite V flattened, finely densely punctured with short hairs.

Males unknown.

Diagnosis

Metapocyrtus (M.) pseudahirakui sp. nov. differs from all other species of the subgenus for its unique elytral ornamentation consisting of golden-yellow and pale green longitudinal stripes along the elytral striae. It superficially looks similar to *M. (Orthocyrtus) hirakui* Cabras, Medina & Bollino, 2021 due to mimicry reasons, but can be distinguished by its rostrum, punctures of the pronotum and the tuft of brownish hairs at the base of the apical declivity. *M. (M.) pseudahirakui* sp. nov. has rostrum with V-shape ridge and rounded dorsolateral edges, whereas *M. (O.) hirakui* has a rostrum which is dorsally straight, mostly in a plane with front and, at base, the sides are rectangularly declined.

Etymology

Etymology. The specific epithet pertains to its uncanny resemblance to *M. (O.) hirakui*.

Distribution

Metapocyrtus (M.) pseudahirakui sp. nov. is known, so far, in Bukidnon.

Discussion

Notes on the ecology and mimicry of the new *Metapocyrtus* spp.

The type locality of *M. jumawani* sp. nov. is in Maragusan, Davao de Oro. Davao de Oro (formerly Compostela Valley or COMVAL) Province in Davao Region and is part of the Eastern Mindanao Biological Corridor (EMBC). It is a long stretch of mountain ecosystems bordering the eastern seaboard of Mindanao. The mountain ecosystem of Davao de Oro, including Cagan Valley, is situated in the east side of Mt. Candalaga range. The biotype is composed of old growth secondary forests, mostly remnants of the logging concessions in the late 1950s. Due to its rugged terrain and inaccessibility for most villagers in the nearby downtown, its forests have remained intact and undisturbed for decades, including its riparian systems, making it an ideal habitat for members of the tribe Pachyrrhynchini. The new species was collected on the leaves of *Elatostema* sp. (Urticaceae).

As for *M. (M.) ged* sp. nov. and *M. (M.) flavomaculata* sp. nov., both species were collected in Davao City. *M. (M.) ged* sp. nov. was collected in the secondary forests of Catigan, Toril (Fig. 8) using a modified beating sheet method. This modified method involves putting a 2 x 4 white cloth at the base of trees and shrubs and shaking the trees and shrubs vigorously so the non-flying insects will fall to the cloth. *M. (M.) flavomaculata* sp. nov., on the other hand, was collected in the montane forests bordering Lamanan and Marilog, at an elevation of approximately 1000–1200 m a.s.l. The area where the specimens were collected is a remnant of an old growth forest and the rocks were

mostly covered by moss. The new species was collected in a shady area and mostly on wild *Impatiens* sp. (Balsaminaceae) plants growing on huge mossy rocks. *M. (M.) flavomaculata* sp. nov. was also observed in Lantapan, Bukidnon which extends the range of the distribution of the species. The northern part of Davao City, such as Calinan, Toril, Lamanan and Marilog, share some common species with Bukidnon, such as the recently-described *M. kitangladensis* Cabras, Medina & Zhang, 2019 which was found abundant in Bukidnon and was also observed in Marilog and Carmen in Davao City. Lantapan Bukidnon is also the type locality of *M. (M.) pseudahirakui* sp. nov. The species was collected alongside *M. (O.) hirakui* Cabras, Medina & Bollino, 2021 and *Pachyrhynchus tiko* Rukmane, 2016, which were very abundant in the area. At first, it can easily be mistaken for *M. (O.) hirakui* until further microscopic examination.

Metapocyrtus pseudahirakui sp. nov. is a classic example of interspecific mimicry within the genus *Metapocyrtus*, which was mentioned by Schultze (1925). Mimicry within the tribe Pachyrhynchini is quite common, especially between *Pachyrhynchus* and *Metapocyrtus* (Schultze 1925). Amongst the four species described here, three are involved in mimicry complexes. *M. jumawani* sp. nov. is involved in a large and complex mimicry with several species of *Metapocyrtus*, as well as *Pachyrhynchus kraslavae* Rukmane & Barševskis 2016 and *Pachyrhynchus miltoni* Cabras & Rukmane, 2016 in Davao de Oro. *Metapocyrtus pseudahirakui* sp. nov. is in a mimicry complex with *M. (O.) hirakui* Cabras, Medina & Bollino, 2020, *Pachyrhynchus tiko* Rukmane, 2016, *Doliops dauvapilsi* Barševskis, 2014 and *Polycatus mimicus* Bramanti, Bramanti, & Rukmane, 2020. Another remarkable mimicry complex is the one observed with *M. (M.) flavomaculata* sp. nov., wherein five species from the order Coleoptera and one species of Hemiptera were documented sharing the same ornamentations of yellow spots on their bodies within the same vicinity. Amongst the members of this mimicry complex are *Pachyrhynchus sulphureomaculatus*, *Pachyrhynchus erichsoni*, *Alcidodes* sp. and the true bug *Platynopus melanoleucus* (Westwood, 1837) (Pentatomidae) (Fig. 9). The involvement of crickets and true bugs in the mimicry complex of the tribe Pachyrhynchini was already noted long ago by Wallace (1889). Mimicry amongst the tribe Pachyrhynchini was first noted by early naturalists who worked in Southeast Asia such as Wallace and Schultze, who noticed sympatric species of Pachyrhynchini sharing the same integument colours and elytral patterns. The tribe Pachyrhynchini are taking advantage of their colouration as aposematic signals in deterring predators, exploiting predators' visual system and making them unpalatable to predators (Tseng et al. 2014). This defence mechanism was utilised by other members of weevils, such as *Macrocyrtus*, *Celebia*, *Alcidodes*, *Polycatus*, *Eupyrgops*, *Neopyrgops*, *Coptorhynchus* and even the longhorned beetle *Doliops* by copying the patterns and colourations of the tribe Pachyrhynchini.

Acknowledgements

We wish to express our gratitude to Dr. Guillermo P. Torres and Dr. Maria Linda Arquiza for their continuous support on our coleopterological research; the research team of the

Coleoptera Research Center- to Chrestine Torrejos and Jessa Balbanida for the help in the collection of the specimens during the field expedition. We are also grateful to Dr. Arvids Barševskis for the continuous support, especially during our visit to Ilgas (Daugavpils, Latvia), to Dr. Hiraku Yoshitake during my visit to Institute for Agro-Environmental Sciences, NARO, Tsukuba, Japan (NIAES) and to Dr. Klaus-Dieter Klass and Olaf Jäger for their help during our visit to Senckenberg Natural History Collections, Dresden, Germany (SMTD). We would also like to thank Danilo Tandang of the Philippine National Museum for the plant identification and Sir Treasure Susulan for the GIS map. We wish to also extend our gratitude to Anita Rukmane-Barbale and Maurizio Bollino for their cooperation and the anonymous reviewers for helping improve the manuscript.

Author contributions

A. Cabras and M.N. Medina both participated in providing logistics for the field expedition, acquisition of permits, collection of specimens, writing of manuscript, description of the new species and review of the final draft of the manuscript.

References

- Alonso-Zarazaga MA, Lyal C (1999) A WORLD CATALOGUE OF FAMILIES AND GENERA OF CURCULIONOIDEA QNSECTA:COLEOPTERA) (Excepting Scolytidae and Platypodidae). 1999. Entomopraxis, S. C. P., 290 pp.
- Bollino M, Medina MN, Cabras A (2020) Three new *Metapocyrtus* Heller, 1912 (Curculionidae, Entiminae, Pachyrhynchini) from Mindanao Island, Philippines. Journal of Tropical Coleopterology 1 (1): 26-38.
- Cabras A, Bollino M, Medina MN (2018) A new species of the subgenus *Orthocyrtus*, genus *Metapocyrtus* (Coleoptera, Curculionidae, Entiminae, Pachyrhynchini) from Mindanao, with notes on its ecology. Baltic Journal of Coleopterology 18 (1): 39-46.
- Cabras A, Medina MN, Zhang G (2019) *Metapocyrtus kitangladensis* sp. n., a new *Pachyrhynchus cumingii* GR Waterhouse, 1841 mimic from Mindanao Island, Philippines. ZooKeys 853: 119-129. <https://doi.org/10.3897/zookeys.853.30595>
- Cabras A, Medina MN, Bollino M (2021) Two new species of the genus *Metapocyrtus* Heller, 1912 (Coleoptera, Curculionidae, Entiminae, Pachyrhynchini), subgenus *Orthocyrtus* Heller, 1912, from Mindanao Island, Philippines. ZooKeys 1029: 139-154. <https://doi.org/10.3897/zookeys.1029.63023>
- Heller KM (1912) Philippinische Rüsselkäfer. Philippine Journal of Science 7: 295-346..
- Morimoto K, Kojima H, Miyakawa S (2006) Curculionoidea: General Introduction and Curculionidae (Part 1). Phyllobiini, Polydrusini and Cyphicerini (Coleoptera). Entomological Society of Japan, 3. The Insect of Japan, Touka Shobo, Fukuoka, 406 pp.
- Schönherr CJ (1826) Curculionidum dispositio methodica cum generum characteribus, descriptionibus atque observationibus variis seu Prodromus ad Synonymiae Insectorum, partem IV. . Fleischer, Lipsiae338.

- Schultze W (1925) A monograph of the pachyrrhynchid group of the Brachyderinae, Curculionidae: part III. The genera *Apocyrtidius* Heller and *Metapocyrtus* Heller. Philippine Journal of Science 26 (10): 131-310.
- Tseng H, Lin C, Hsu J, Pike D, Huang W, et al. (2014) The functional significance of aposematic signals: geographic variation in the responses of widespread lizard predators to colourful invertebrate prey. PLOS ONE 9 (3): e91777. <https://doi.org/10.1371/journal.pone.0091777>
- Wallace AR (1889) Darwinism: An Exposition of the Theory of Natural Selection, with Some of Its Applications. Macmillan and Company, New York , 444 pp. <https://doi.org/10.5962/bhl.title.20219>
- Yap S, Gapud V (2007) Taxonomic review of the genus *Metapocyrtus* Heller (Coleoptera: Curculionidae: Entiminae). The Philippine Entomologist 21 (2): 115-135.
- Yoshitake H (2011) A new species of the subgenus *Artapocyrtus* of the genus *Metapocyrtus* (Coleoptera: Curculionidae: Entiminae) from Mindanao, the Philippines. Esakia 50: 115-119.

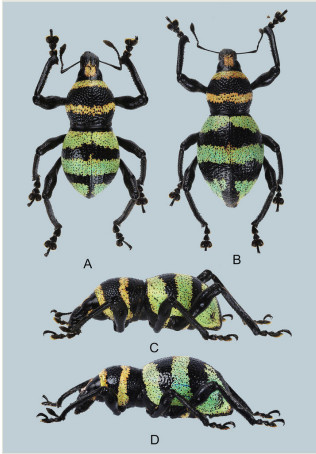


Figure 1.

Metapocyrtus jumawani sp. nov.: **A** male holotype, dorsal view; **B** female, dorsal view; **C** male, lateral view; **D** female, lateral view.

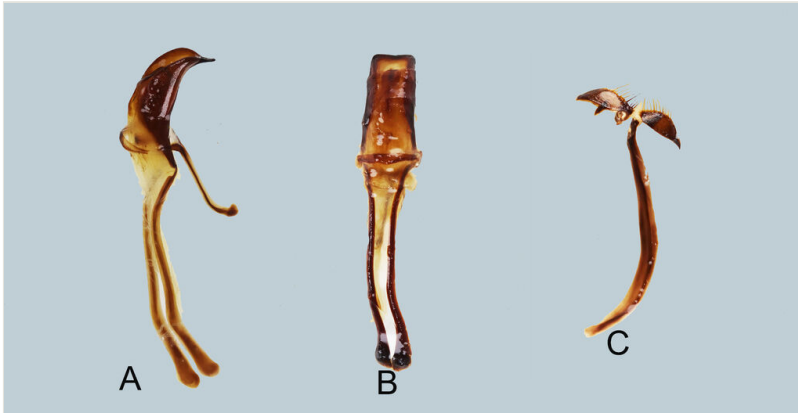


Figure 2.

Male genitalia of *Metapocyrtus jumawani* **A** aedeagus in lateral view; **B** idem in dorsal view; **C** sternite IX in dorsal view.

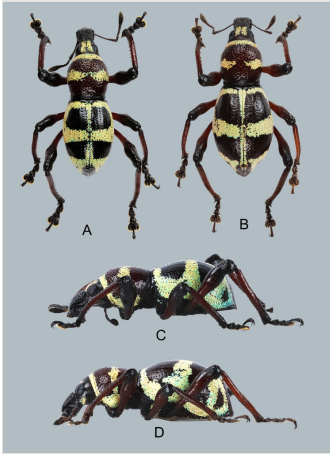


Figure 3.

Metapocyrtus (Metapocyrtus) ged sp. nov.: **A** male holotype, dorsal view; **B** female, dorsal view; **C** male, lateral view; **D** female, lateral view.

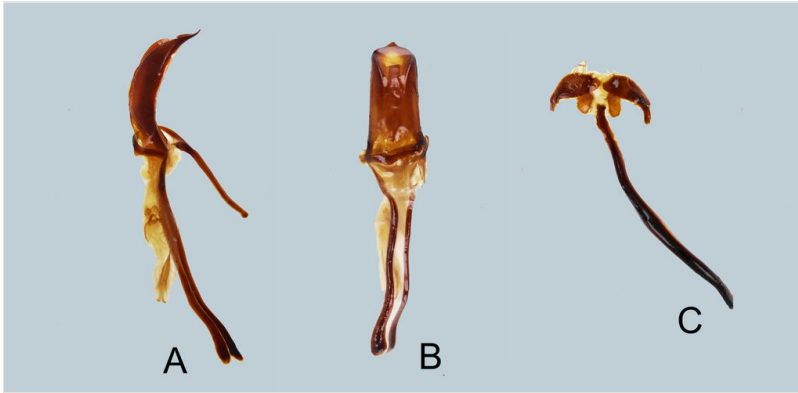


Figure 4.

Male genitalia of *Metapocyrtus ged* **A** aedeagus in lateral view; **B** idem in dorsal view; **C** sternite IX in dorsal view.

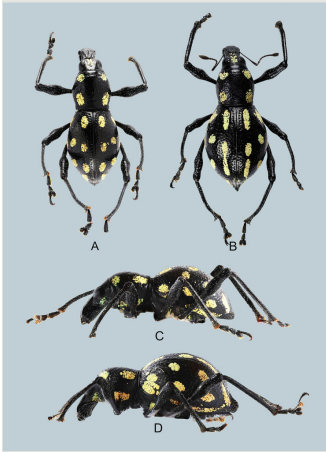


Figure 5.

Metapocyrtus flavomaculata sp. nov.: **A** male holotype, dorsal view; **B** female, dorsal view; **C** male, lateral view; **D** female, lateral view.

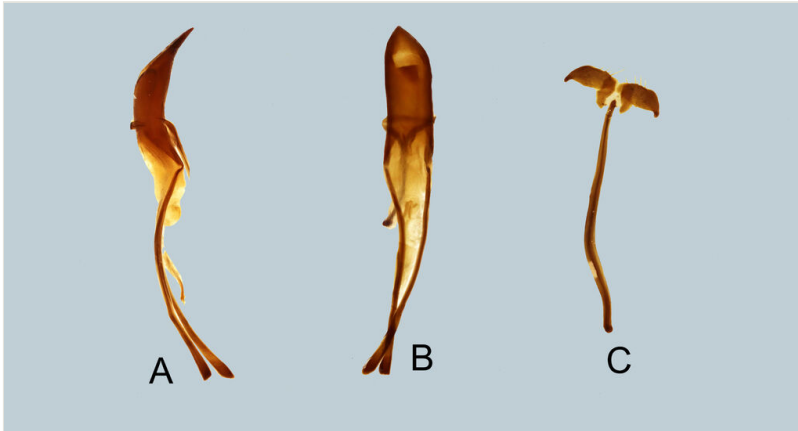


Figure 6.

Metapocyrtus flavomaculata **A** aedeagus in lateral view; **B** idem in dorsal view; **C** sternite IX in dorsal view.



Figure 7.

Metapocyrtus (Metapocyrtus) pseudahirakui sp. nov., female holotype: **A** dorsal view; **B** lateral view.

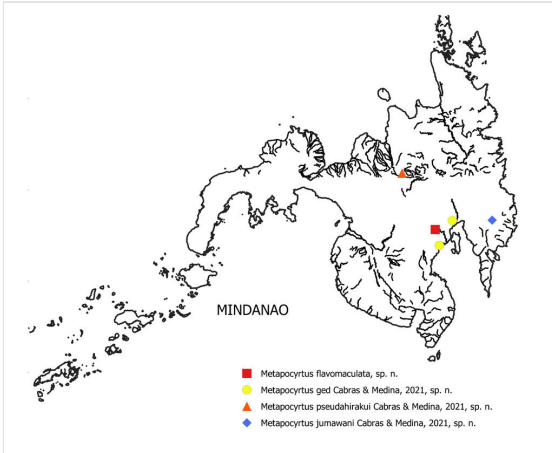


Figure 8.
Geographical distribution map of *Metapocyrtus* spp. on Mindanao Island



Figure 9.

Mimicry of *Metapocyrtus flavomaculata* sp. nov. **A** *Pachyrhynchus sulphureomaculatus*; **B** *Pachyrhynchus erichsoni*; **C** *Alcidodes* sp. (Curculionidae, Alcidinae); **D** *Platynopus melanoleucus* (Westwood, 1837) (Pentatomidae); **E** . *Metapocyrtus flavomaculata* sp. nov.