

## Appendix A Underpass Site Images

---



**Appendix A Image 1:** Aerial view of Tunnel 1. Underpass is indicated with an arrow. Photo taken by Randy Chinchilla on 30 November 2021.

---



**Appendix A Image 2:** Aerial view of Tunnel 2. Underpass is indicated with an arrow. Photo taken by Randy Chinchilla on 30 November 2021.

---



**Appendix A Image 3:** Entrance of Tunnel 1. Frank Joyce and Orlando Méndez pictured at the exit.

---



**Appendix A Image 4:** Entrance of Tunnel 2.

---





**Appendix A Image 5:** Fence at Tunnel 1 emphasized with red arrow.



**Appendix A Image 6:** Fence at Tunnel 2 emphasized with red arrow.



**Appendix A Image 7:** Entrance of culvert 1. Wooden debris from cliff ladder shown.



**Appendix A Image 8:** Entrance of culvert 2.

---



## Appendix B

### Quantitative Underpass Crossings by Species

**Appendix B Table 1:** Sum of total detected crossings by species across all underpasses.

Species	Crossing #
Common Opossum ( <i>Didelphis marsupialis</i> )	30
Agouti ( <i>Dasyprocta punctata</i> )	21
Domestic Dog ( <i>Canis familiaris</i> )	15
Nine-Banded Armadillo ( <i>Dasypus novemcinctus</i> )	13
Domestic Cat ( <i>Felis catus</i> )	12
Norway Rat ( <i>Rattus norvegicus</i> )	5
Ocelot ( <i>Leopardus pardalis</i> )	4
Squirrel ( <i>Sciurus variegatoides</i> )	3
Northern Tamandua ( <i>Tamandua mexicana</i> )	2
Rat Opossum ( <i>Micoureus alston</i> )	1
Coati ( <i>Nasua narica</i> )	1
Watson's Climbing Rat ( <i>Tylomys watsoni</i> )	1
Total	108

**Appendix B Table 2:** Number of detected crossings by species through Tunnel 1 and 2.

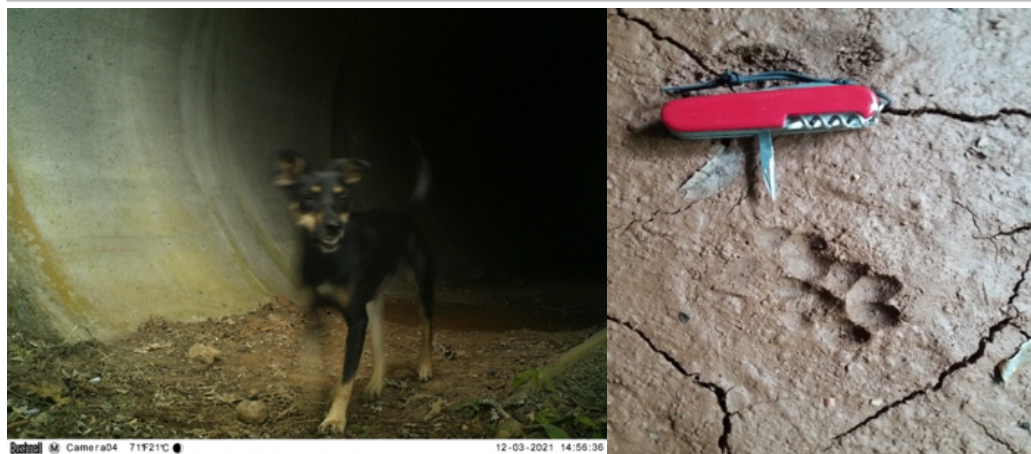
Tunnel 1	
Species	Crossing #
Agouti ( <i>Dasyprocta punctata</i> )	21
Domestic Dog ( <i>Canis familiaris</i> )	15
Common Opossum ( <i>Didelphis marsupialis</i> )	8
Nine-Banded Armadillo ( <i>Dasypus novemcinctus</i> )	7
Ocelot ( <i>Leopardus pardalis</i> )	4
Norway Rat ( <i>Rattus norvegicus</i> )	4
Squirrel ( <i>Sciurus variegatoides</i> )	3
Domestic Cat ( <i>Felis catus</i> )	2
Northern Tamandua ( <i>Tamandua mexicana</i> )	2
Coati ( <i>Nasua narica</i> )	1
Total:	67
Tunnel 2	
Species	Crossing #
Common Opossum ( <i>Didelphis marsupialis</i> )	11
Nine-Banded Armadillo ( <i>Dasypus novemcinctus</i> )	6
Domestic Cat ( <i>Felis catus</i> )	6
Norway Rat ( <i>Rattus norvegicus</i> )	1
Total:	24

**Appendix B Table 3:** Number of detected crossings by species through Culvert 1 and 2.

Culvert 1	
Species	Crossing #
Common Opossum ( <i>Didelphis marsupialis</i> )	3
Watson's Climbing Rat ( <i>Tylomys watsoni</i> )	1
Rat Opossum ( <i>Micoureus alstoni</i> )	1
Total:	5
Culvert 2	
Species	Crossing #
Common Opossum ( <i>Didelphis marsupialis</i> )	8
Domestic Cat ( <i>Felis catus</i> )	4
Total:	12

### Appendix C

#### Examples of Camera Trap and Corresponding Mud Track Data

**Appendix C Image 1:** Coyote (*Canis latrans*) pictured in fragment**Appendix C Image 2:** Domestic Dog (*Canis familiaris*) pictured in Tunnel 1





**Appendix C Image 3:** Black Iguana (*Ctenosaura similis*) pictured in fragment

---



**Appendix C Image 4:** Agouti (*Dasyprocta punctata*) pictured in Tunnel 1

---



**Appendix C Image 5:** Nine-Banded Armadillo (*Dasypus novemcinctus*) pictured in Tunnel 2

---



**Appendix C Image 6:** Common Opossum (*Didelphis marsupialis*) pictured in Tunnel 2

---



**Appendix C Image 7:** Domestic Cat (*Felis catus*) pictured in Tunnel 2

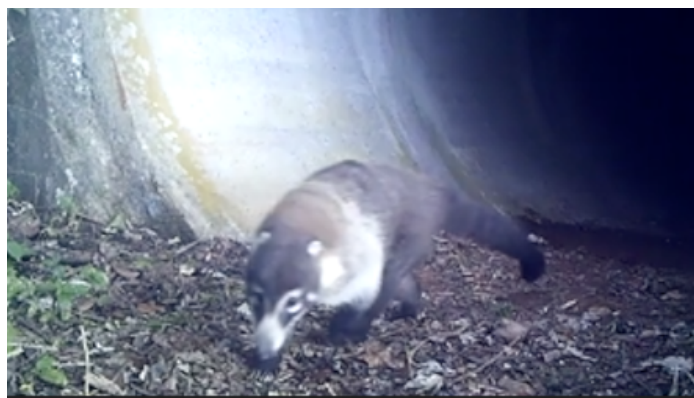
---



**Appendix C Image 8:** Ocelot (*Leopardus pardalis*) pictured in Tunnel 1

---





**Appendix C Image 9:** Coati (*Nasua narica*) pictured in Tunnel 1

---



**Appendix C Image 10:** Squirrel (*Sciurus variegatoides*) pictured in Tunnel 1

---



**Appendix C Image 11:** Tamandua (*Tamandua mexicana*) pictured in Tunnel 1

---



**Appendix C Image 12:** Gray Fox (*Urocyon cinereoargenteus*) pictured in fragment.

---