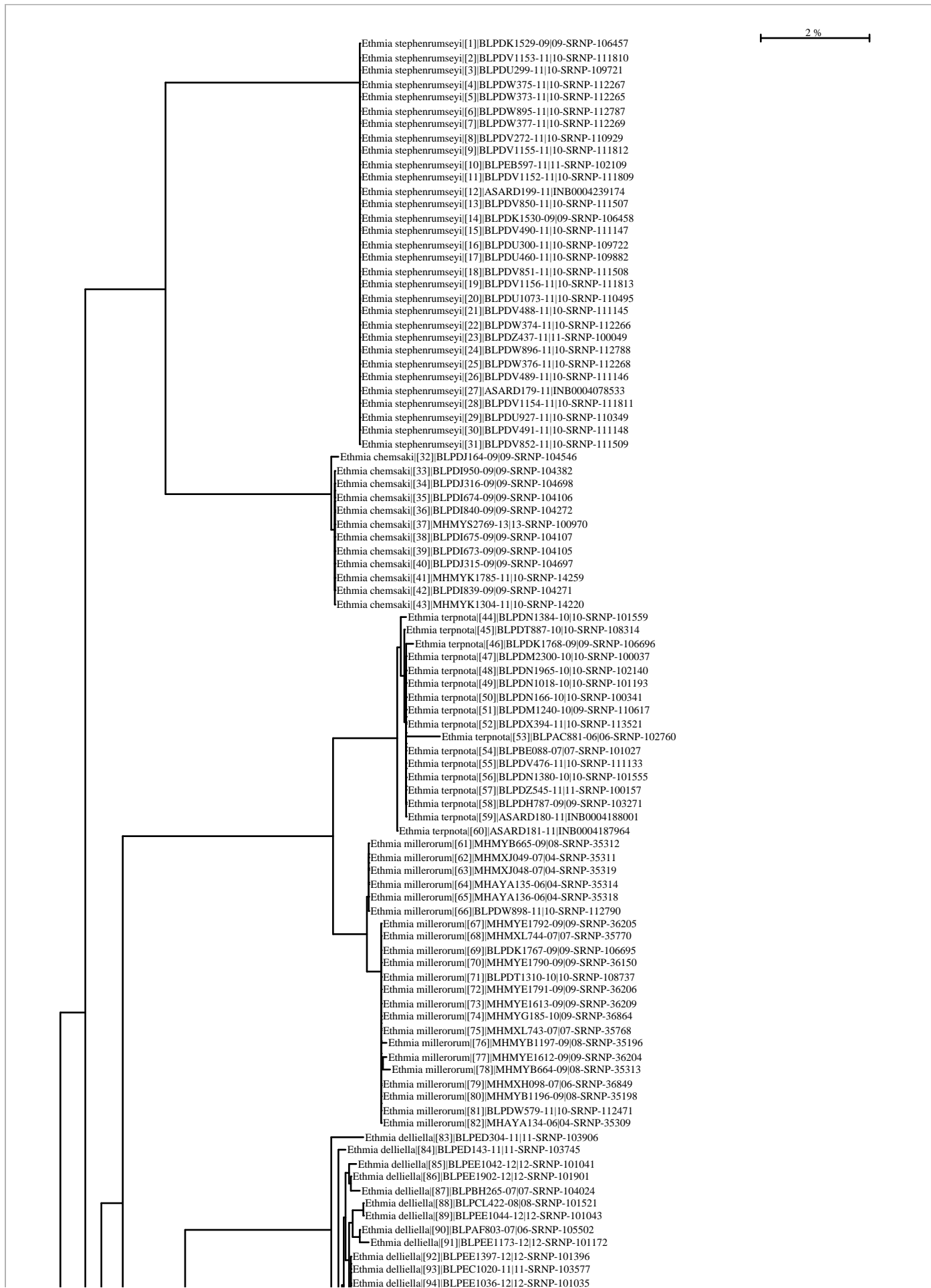


BOLD TaxonID Tree

Title : SEARCH: Tax(*Ethmia*), Geo(Costa Rica) [SEARCH1]
Date : 30-July-2014
Data Type : Nucleotide
Distance Model : Kimura 2 Parameter
Marker : COI-5P
Codon Positions : 1st, 2nd, 3rd
Labels : SampleID, ProcessID
Filters : Length > 200
Colorization : [blue]=Stop Codons [red]=Contamination or misidentification
Attachment : Photographs & Spreadsheet

Sequence Count : 1122
Species count : 41
Genus count : 1
Family count : 1
Unidentified : 0



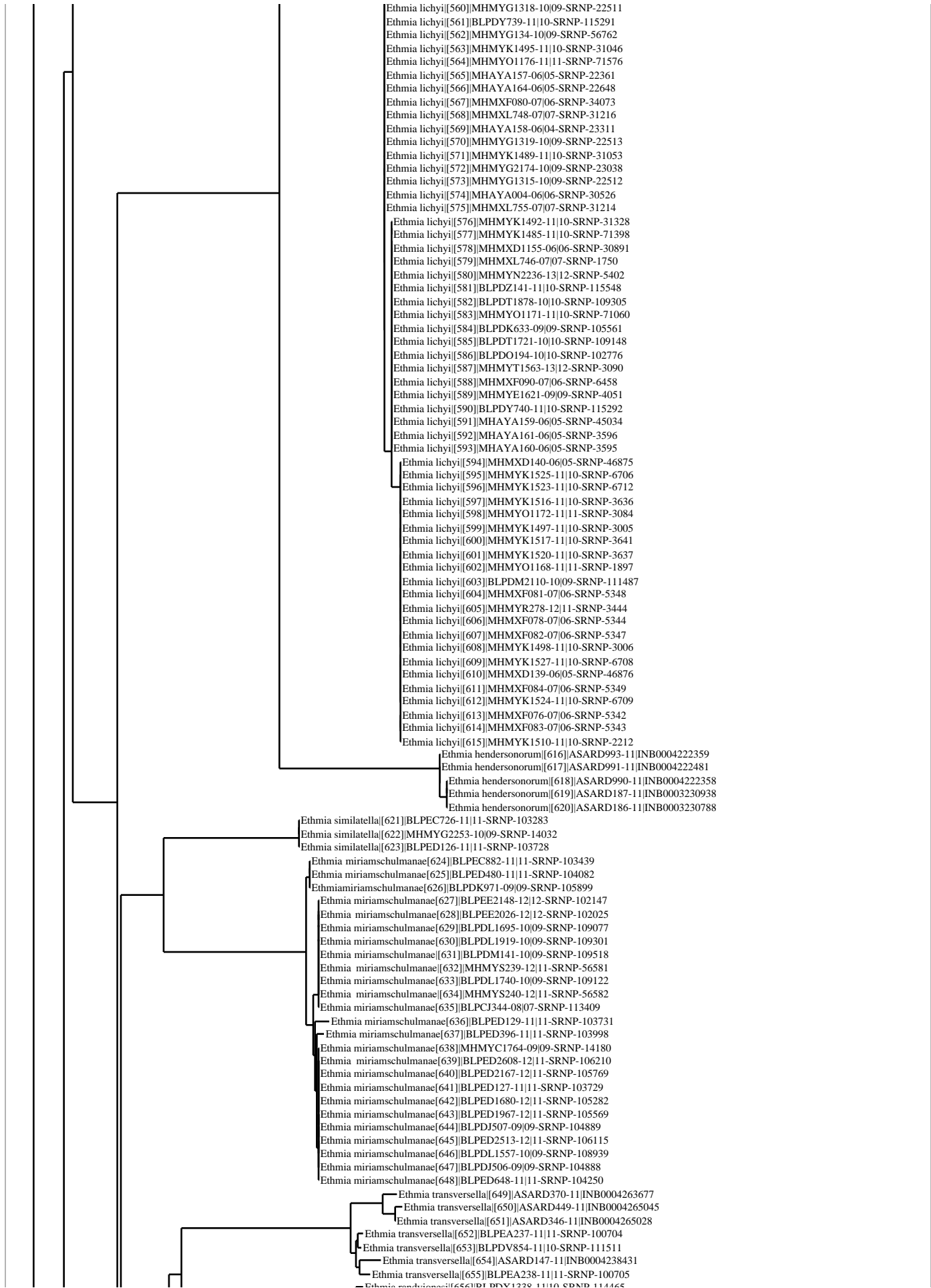
Ethmia delliella[92]BLPEE1397-12|12-SRNP-101396
Ethmia delliella[93]BLPEC1020-11|11-SRNP-103577
Ethmia delliella[94]BLPEE1036-12|12-SRNP-101035
Ethmia delliella[95]BLPDK813-09|09-SRNP-105741
Ethmia delliella[96]BLPEE1039-12|12-SRNP-101038
Ethmia delliella[97]MHMYS3212-13|13-SRNP-101413
Ethmia delliella[98]BLPEE1174-12|12-SRNP-101173
Ethmia delliella[99]BLPEE1141-12|12-SRNP-101140
Ethmia delliella[100]BLPDJ162-09|09-SRNP-104544
Ethmia delliella[101]BLPEC704-11|11-SRNP-103261
Ethmia delliella[102]BLPEC705-11|11-SRNP-103262
Ethmia delliella[103]BLPEC1023-11|11-SRNP-103580
Ethmia delliella[104]BLPEE1413-12|12-SRNP-101412
Ethmia delliella[105]BLPEE1041-12|12-SRNP-101040
Ethmia delliella[106]BLPED144-11|11-SRNP-103746
Ethmia delliella[107]BLPEC1021-11|11-SRNP-103578
Ethmia delliella[108]BLPBH264-07|07-SRNP-104023
Ethmia delliella[109]BLPBH261-07|07-SRNP-104020
Ethmia delliella[110]BLPBH262-07|07-SRNP-104021
Ethmia delliella[111]MHAYA150-06|96-SRNP-2000
Ethmia delliella[112]BLPEE1411-12|12-SRNP-101410
Ethmia delliella[113]BLPEE1293-12|12-SRNP-101292
Ethmia delliella[114]BLPEE1175-12|12-SRNP-101174
Ethmia delliella[115]MHMYS2808-13|13-SRNP-101009
Ethmia delliella[116]BLPEC1022-11|11-SRNP-103579
Ethmia delliella[117]BLPBH266-07|07-SRNP-104025
Ethmia delliella[118]BLPEE1043-12|12-SRNP-101042
Ethmia delliella[119]BLPEE1040-12|12-SRNP-101039
Ethmia delliella[120]BLPED142-11|11-SRNP-103744
Ethmia delliella[121]BLPDJ317-09|09-SRNP-104699
Ethmia delliella[122]BLPEE1038-12|12-SRNP-101037
Ethmia delliella[123]BLPEE1294-12|12-SRNP-101293
Ethmia delliella[124]BLPDJ002-09|09-SRNP-104384
Ethmia delliella[125]BLPEC1024-11|11-SRNP-103581
Ethmia delliella[126]BLPAE377-06|06-SRNP-104136
Ethmia delliella[127]BLPEC706-11|11-SRNP-103263
Ethmia delliella[128]BLPEE1292-12|12-SRNP-101291
Ethmia delliella[129]BLPDJ318-09|09-SRNP-104700
Ethmia delliella[130]BLPEC865-11|11-SRNP-103422
Ethmia delliella[131]BLPEE1410-12|12-SRNP-101409
Ethmia delliella[132]BLPBH267-07|07-SRNP-104026
Ethmia delliella[133]BLPEE1037-12|12-SRNP-101036
Ethmia delliella[134]BLPBH260-07|07-SRNP-104019
Ethmia delliella[135]BLPBH833-07|07-SRNP-104592
Ethmia delliella[136]MHAYA151-06|98-SRNP-1006.1
Ethmia delliella[137]BLPEC868-11|11-SRNP-103425
Ethmia delliella[138]BLPEE1412-12|12-SRNP-101411
Ethmia delliella[139]BLPBH263-07|07-SRNP-104022
Ethmia bitteneilla[140]BLPDJ163-09|09-SRNP-104545
Ethmia bitteneilla[141]BLPEE2150-12|12-SRNP-102149
Ethmia bitteneilla[142]BLPDJ314-09|09-SRNP-104696
Ethmia bitteneilla[143]BLPDJ310-09|09-SRNP-104692
Ethmia bitteneilla[144]BLPEE2149-12|12-SRNP-102148
Ethmia bitteneilla[145]BLPDJ311-09|09-SRNP-104693
Ethmia bitteneilla[146]BLPDJ313-09|09-SRNP-104695
Ethmia bitteneilla[147]BLPDJ001-09|09-SRNP-104383
Ethmia bitteneilla[148]BLPDJ312-09|09-SRNP-104694
Ethmia phylacis[149]BLPAE554-06|06-SRNP-104313
Ethmia phylacis[150]BLPAE552-06|06-SRNP-104311
Ethmia phylacis[151]BLPDJ322-09|09-SRNP-104704
Ethmia phylacis[152]BLPAE555-06|06-SRNP-104314
Ethmia phylacis[153]BLPDJ321-09|09-SRNP-104703
Ethmia exornata[154]BLPDK811-09|09-SRNP-105739
Ethmia exornata[155]BLPDT1876-10|10-SRNP-109303
Ethmia exornata[156]BLPDK810-09|09-SRNP-105738
Ethmia exornata[157]BLPDZ236-11|10-SRNP-115643
Ethmia exornata[158]BLPDK1548-09|09-SRNP-106476
Ethmia exornata[159]BLPDK1061-09|09-SRNP-105989
Ethmia exornata[160]BLPCO934-08|08-SRNP-104411
Ethmia exornata[161]MHMYS3097-13|13-SRNP-101298
Ethmia exornata[162]BLPCO099-08|08-SRNP-103576
Ethmia exornata[163]BLPEE2157-12|12-SRNP-102156
Ethmia exornata[164]BLPDK632-09|09-SRNP-105560
Ethmia exornata[165]BLPDU760-11|10-SRNP-110182
Ethmia exornata[166]BLPED145-11|11-SRNP-103747
Ethmia exornata[167]BLPDK812-09|09-SRNP-105740
Ethmia exornata[168]BLPCO933-08|08-SRNP-104410
Ethmia exornata[169]MHMYS3213-13|13-SRNP-101414
Ethmia exornata[170]MHMYS3214-13|13-SRNP-101415
Ethmia exornata[171]BLPED645-11|11-SRNP-104247
Ethmia dianemillerae[172]MHMYB666-09|08-SRNP-5574
Ethmia dianemillerae[173]BLPCB099-08|07-SRNP-105644
Ethmia dianemillerae[174]BLPBA920-07|06-SRNP-108063
Ethmia mnesicosma[175]BLPDY217-11|10-SRNP-114769
Ethmia mnesicosma[176]BLPDK379-09|09-SRNP-105307
Ethmia mnesicosma[177]MHMXD138-06|05-SRNP-49405
Ethmia mnesicosma[178]MHMYK2028-11|10-SRNP-21092
Ethmia mnesicosma[179]MHMXF093-07|06-SRNP-16281
Ethmia mnesicosma[180]MHMYK1945-11|10-SRNP-3815
Ethmia mnesicosma[181]MHMYN1316-11|10-SRNP-13736
Ethmia mnesicosma[182]MHMYK1452-11|10-SRNP-3816
Ethmia mnesicosma[183]MHMYT2244-13|12-SRNP-12339
Ethmia mnesicosma[184]MHMXC376-06|05-SRNP-34751
Ethmia mnesicosma[185]MHMYG949-10|09-SRNP-56609
Ethmia mnesicosma[186]BLPDD802-09|08-SRNP-108697
Ethmia mnesicosma[187]MHMYO2202-12|11-SRNP-21615

Ethmia mnesicosma[186]BLPDD802-09/08-SRNP-108697
 Ethmia mnesicosma[187]MHMYO2202-12/11-SRNP-21615
 Ethmia mnesicosma[188]MHMYO2201-12/11-SRNP-21612
 Ethmia mnesicosma[189]MHMXC370-06/05-SRNP-34752
 Ethmia mnesicosma[190]MHMYG960-10/09-SRNP-56617
 Ethmia mnesicosma[191]MHMYG958-10/09-SRNP-56618
 Ethmia mnesicosma[192]MHMYG959-10/09-SRNP-56610
 Ethmia mnesicosma[193]BLPED1049-12/11-SRNP-104651
 Ethmia mnesicosma[194]MHMYK339-11/10-SRNP-3842
 Ethmia mnesicosma[195]MHMYK341-11/10-SRNP-3851
 Ethmia mnesicosma[196]MHMYK697-11/10-SRNP-3888
 Ethmia mnesicosma[197]MHMYK1947-11/10-SRNP-3856
 Ethmia mnesicosma[198]MHMYK1944-11/10-SRNP-3873
 Ethmia mnesicosma[199]MHMYK529-11/10-SRNP-3869
 Ethmia mnesicosma[200]MHMYK340-11/10-SRNP-3866
 Ethmia mnesicosma[201]BLPDG379-09/09-SRNP-101923
 Ethmia mnesicosma[202]BLPDZ113-11/10-SRNP-115520
 Ethmia mnesicosma[203]BLPDK631-09/09-SRNP-105559
 Ethmia mnesicosma[204]MHMYK338-11/10-SRNP-3698
 Ethmia mnesicosma[205]MHMYS241-12/11-SRNP-56081
 Ethmia mnesicosma[206]MHMXF091-07/06-SRNP-16295
 Ethmia mnesicosma[207]MHMXF095-07/06-SRNP-16314
 Ethmia mnesicosma[208]BLPCG716-08/07-SRNP-110961
 Ethmia mnesicosma[209]MHMXF092-07/06-SRNP-16307
 Ethmia mnesicosma[210]BLPDL1862-10/09-SRNP-109244
 Ethmia mnesicosma[211]BLPAF804-07/06-SRNP-105503
 Ethmia mnesicosma[212]MHMYT2243-13/12-SRNP-12299
 Ethmia mnesicosma[213]MHMYK1273-11/10-SRNP-22094
 Ethmia mnesicosma[214]BLPEA500-11/11-SRNP-100967
 Ethmia mnesicosma[215]MHMYB1198-09/07-SRNP-22083
 Ethmia mnesicosma[216]BLPDZ235-11/10-SRNP-115642
 Ethmia mnesicosma[217]MHAYA149-06/04-SRNP-45698
 Ethmia mnesicosma[218]MHAYA147-06/04-SRNP-45695
 Ethmia mnesicosma[219]MHMYB1199-09/07-SRNP-22080
 Ethmia mnesicosma[220]MHAYA148-06/04-SRNP-45699
 Ethmia mnesicosma[221]MHMXF094-07/06-SRNP-16419
 Ethmia adrianforsythi[222]ASARD183-11/11-SRNP-0003230733
 Ethmia adrianforsythi[223]ASARD182-11/11-SRNP-0003231101
 Ethmia adrianforsythi[224]ASARD184-11/11-SRNP-0003230742
 Ethmia adrianforsythi[225]BLPEB1014-11/11-SRNP-102526
 Ethmia adrianforsythi[226]BLPDQ395-10/10-SRNP-105021
 Ethmia adrianforsythi[227]BLPDR927-10/10-SRNP-106552
 Ethmia unguatella[228]MHMYS3250-13/13-SRNP-101451
 Ethmia unguatella[229]MHMYS3372-13/13-SRNP-101573
 Ethmia unguatella[230]MHMYS3078-13/13-SRNP-101279
 Ethmia unguatella[231]BLPDM1357-10/09-SRNP-110734
 Ethmia unguatella[232]MHMYS2868-13/13-SRNP-101069
 Ethmia unguatella[233]MHMYS3252-13/13-SRNP-101453
 Ethmia unguatella[234]BLPDM2195-10/09-SRNP-111572
 Ethmia unguatella[235]BLPDZ348-11/10-SRNP-115755
 Ethmia unguatella[236]MHMYS3251-13/13-SRNP-101452
 Ethmia unguatella[237]BLPCC242-08/07-SRNP-106727
 Ethmia unguatella[238]BLPCF910-08/07-SRNP-110215
 Ethmia unguatella[239]BLPDK1084-09/09-SRNP-106012
 Ethmia unguatella[240]LTOL1261-12/DA-03-3337
 Ethmia unguatella[241]MHMYS3313-13/13-SRNP-101514
 Ethmia unguatella[242]BLPCG349-08/07-SRNP-110594
 Ethmia unguatella[243]BLPDU007-11/10-SRNP-109429
 Ethmia scythropa[244]BLPCM163-08/08-SRNP-101760
 Ethmia scythropa[245]BLPAD182-06/06-SRNP-103001
 Ethmia scythropa[246]MHAYA143-06/05-SRNP-22159
 Ethmia scythropa[247]BLPDB220-09/08-SRNP-106235
 Ethmia scythropa[248]BLPEB1016-11/11-SRNP-102528
 Ethmia scythropa[249]BLPCD760-08/07-SRNP-108185
 Ethmia scythropa[250]BLPDF015-09/09-SRNP-100619
 Ethmia scythropa[251]BLPCD759-08/07-SRNP-108184
 Ethmia scythropa[252]MHAYA137-06/05-SRNP-22148
 Ethmia scythropa[253]MHAYA139-06/02-SRNP-16140
 Ethmia scythropa[254]BLPCF307-08/07-SRNP-109612
 Ethmia scythropa[255]BLPDS582-10/10-SRNP-107206
 Ethmia scythropa[256]BLPDF013-09/09-SRNP-100617
 Ethmia scythropa[257]MHAYA138-06/05-SRNP-22150
 Ethmia scythropa[258]BLPBC007-07/06-SRNP-109030
 Ethmia scythropa[259]BLPDS213-10/10-SRNP-106837
 Ethmia scythropa[260]BLPBE086-07/07-SRNP-101025
 Ethmia scythropa[261]BLPDU645-11/10-SRNP-110067
 Ethmia scythropa[262]BLPDK2155-09/09-SRNP-107083
 Ethmia scythropa[263]BLPDM1397-10/09-SRNP-110774
 Ethmia scythropa[264]BLPED564-11/11-SRNP-104166
 Ethmia scythropa[265]BLPCJ938-08/07-SRNP-114403
 Ethmia scythropa[266]BLPBD481-07/07-SRNP-100480
 Ethmia scythropa[267]BLPDS219-10/10-SRNP-106843
 Ethmia scythropa[268]BLPDR564-10/10-SRNP-106189
 Ethmia scythropa[269]BLPDC804-09/08-SRNP-107759
 Ethmia scythropa[270]BLPAG532-07/06-SRNP-106171
 Ethmia scythropa[271]BLPDM769-10/09-SRNP-110146
 Ethmia scythropa[272]BLPDZ436-11/11-SRNP-100048
 Ethmia scythropa[273]BLPDM979-10/09-SRNP-110356
 Ethmia scythropa[274]BLPDS583-10/10-SRNP-107207
 Ethmia scythropa[275]BLPDU667-11/10-SRNP-110089
 Ethmia scythropa[276]BLPDW897-11/10-SRNP-112789
 Ethmia scythropa[277]BLPCO541-08/08-SRNP-104018
 Ethmia scythropa[278]BLPDS581-10/10-SRNP-107205
 Ethmia scythropa[279]BLPDM1148-10/09-SRNP-110525
 Ethmia scythropa[280]MHAYA141-06/05-SRNP-22123
 Ethmia scythropa[281]BLPDV1158-11/10-SRNP-111815

Ethmia scythropa[279]BLPDM1148-10|09-SRNP-110525
 Ethmia scythropa[280]MHAYA141-06|05-SRNP-22123
 Ethmia scythropa[281]BLPDV1158-11|10-SRNP-111815
 Ethmia scythropa[282]BLPBE087-07|07-SRNP-101026
 Ethmia scythropa[283]BLPAD266-06|06-SRNP-103085
 Ethmia scythropa[284]BLPDG053-09|09-SRNP-101597
 Ethmia scythropa[285]BLPDU298-11|10-SRNP-109720
 Ethmia scythropa[286]BLPED646-11|11-SRNP-104248
 Ethmia scythropa[287]BLPCF306-08|07-SRNP-109611
 Ethmia scythropa[288]BLPDS659-10|10-SRNP-107283
 Ethmia scythropa[289]MHMXF072-07|06-SRNP-31571
 Ethmia scythropa[290]MHMXF071-07|06-SRNP-31481
 Ethmia scythropa[291]BLPCP260-08|08-SRNP-104677
 Ethmia scythropa[292]BLPDM1147-10|09-SRNP-110524
 Ethmia scythropa[293]BLPEB755-11|11-SRNP-102267
 Ethmia scythropa[294]BLPDN986-10|10-SRNP-101161
 Ethmia scythropa[295]BLPDM768-10|09-SRNP-110145
 Ethmia scythropa[296]BLPCK141-08|08-SRNP-100234
 Ethmia scythropa[297]BLPEC103-11|11-SRNP-102660
 Ethmia scythropa[298]BLPEC100-11|11-SRNP-102657
 Ethmia scythropa[299]BLPAC880-06|06-SRNP-102759
 Ethmia scythropa[300]MHMXF074-07|06-SRNP-31486
 Ethmia scythropa[301]MHAYA140-06|02-SRNP-16119
 Ethmia scythropa[302]BLPED563-11|11-SRNP-104165
 Ethmia scythropa[303]BLPDN2289-10|10-SRNP-102464
 Ethmia scythropa[304]BLPCF305-08|07-SRNP-109610
 Ethmia scythropa[305]BLPCG645-08|07-SRNP-110890
 Ethmia scythropa[306]MHAYA146-06|03-SRNP-15570
 Ethmia scythropa[307]BLPCD761-08|07-SRNP-108186
 Ethmia scythropa[308]BLPEB045-11|11-SRNP-101557
 Ethmia scythropa[309]BLPDN1378-10|10-SRNP-101553
 Ethmia scythropa[310]BLPDM1012-10|09-SRNP-110389
 Ethmia scythropa[311]BLPDU761-11|10-SRNP-110183
 Ethmia scythropa[312]MHMXF073-07|06-SRNP-31484
 Ethmia scythropa[313]BLPDC140-09|08-SRNP-107095
 Ethmia scythropa[314]MHAYA145-06|05-SRNP-22416.1
 Ethmia scythropa[315]MHAYA142-06|05-SRNP-22638
 Ethmia scythropa[316]BLPDU358-11|10-SRNP-109780
 Ethmia scythropa[317]BLPBD482-07|07-SRNP-100481
 Ethmia scythropa[318]MHMYB1194-09|08-SRNP-21493
 Ethmia scythropa[319]BLPAD183-06|06-SRNP-103002
 Ethmia scythropa[320]MHAYA144-06|05-SRNP-22063
 Ethmia festivala[321]BLPDI841-09|09-SRNP-104273
 Ethmia festivala[322]BLPED1171-12|11-SRNP-104773
 Ethmia festivala[323]BLPED687-11|11-SRNP-104289
 Ethmia festivala[324]BLPDV1210-11|10-SRNP-111867
 Ethmia festivala[325]BLPDJ004-09|09-SRNP-104386
 Ethmia festivala[326]BLPEC866-11|11-SRNP-103423
 Ethmia festivala[327]BLPDL610-10|09-SRNP-107992
 Ethmia festivala[328]BLPED141-11|11-SRNP-103743
 Ethmia festivala[329]BLPEC867-11|11-SRNP-103424
 Ethmia festivala[330]BLPEC869-11|11-SRNP-103426
 Ethmia festivala[331]BLPED2315-12|11-SRNP-105917
 Ethmia festivala[332]BLPEC1019-11|11-SRNP-103576
 Ethmia festivala[333]BLPDR780-10|10-SRNP-106405
 Ethmia festivala[334]BLPDV1194-11|10-SRNP-111851
 Ethmia festivala[335]BLPED609-11|11-SRNP-104211
 Ethmia festivala[336]BLPED340-11|11-SRNP-103942
 Ethmia festivala[337]BLPED1172-12|11-SRNP-104774
 Ethmia festivala[338]BLPDT256-10|10-SRNP-107683
 Ethmia blaineorum[339]BLPED140-11|11-SRNP-103742
 Ethmia blaineorum[340]BLPAE546-06|06-SRNP-104305
 Ethmia blaineorum[341]BLPDJ320-09|09-SRNP-104702
 Ethmia blaineorum[342]BLPAE544-06|06-SRNP-104303
 Ethmia blaineorum[343]BLPDJ005-09|09-SRNP-104387
 Ethmia blaineorum[344]BLPDJ044-09|09-SRNP-104426
 Ethmia blaineorum[345]BLPAE548-06|06-SRNP-104307
 Ethmia blaineorum[346]BLPAE545-06|06-SRNP-104304
 Ethmia blaineorum[347]BLPAE547-06|06-SRNP-104306
 Ethmia blaineorum[348]BLPCA747-08|07-SRNP-105352
 Ethmia blaineorum[349]BLPDJ319-09|09-SRNP-104701
 Ethmia blaineorum[350]BLPDJ460-09|09-SRNP-104842
 Ethmia blaineorum[351]BLPDI873-09|09-SRNP-104305
 Ethmia elutella[352]BLPDS249-10|10-SRNP-106873
 Ethmia elutella[353]BLPEB240-11|11-SRNP-101752
 Ethmia elutella[354]BLPDS687-10|10-SRNP-107311
 Ethmia elutella[355]BLPDF847-09|09-SRNP-101451
 Ethmia elutella[356]BLPDG291-09|09-SRNP-101835
 Ethmia elutella[357]BLPDS191-10|10-SRNP-106815
 Ethmia elutella[358]BLPEB242-11|11-SRNP-101754
 Ethmia elutella[359]BLPEB139-11|11-SRNP-101651
 Ethmia elutella[360]BLPEB647-11|11-SRNP-102159
 Ethmia elutella[361]BLPDG549-09|09-SRNP-102093
 Ethmia elutella[362]BLPDR932-10|10-SRNP-106557
 Ethmia janzeni[363]BLPEA494-11|11-SRNP-100961
 Ethmia janzeni[364]BLPEB241-11|11-SRNP-101753
 Ethmia janzeni[365]BLPEE245-12|12-SRNP-100244
 Ethmia janzeni[366]BLPEB164-11|11-SRNP-101676
 Ethmia janzeni[367]BLPEA496-11|11-SRNP-100963
 Ethmia janzeni[368]BLPEA498-11|11-SRNP-100965
 Ethmia janzeni[369]BLPEE247-12|12-SRNP-100246
 Ethmia janzeni[370]BLPDR841-10|10-SRNP-106466
 Ethmia janzeni[371]BLPEA497-11|11-SRNP-100964
 Ethmia janzeni[372]BLPEA492-11|11-SRNP-100959
 Ethmia janzeni[373]BLPDF781-09|09-SRNP-101385
 Ethmia janzeni[374]BLPDR689-10|10-SRNP-106314
 Ethmia janzeni[375]BLPDH087-09|09-SRNP-102571

Ethmia janzeni[372]BLPEA492-11|11-SRNP-100959
Ethmia janzeni[373]BLPDF781-09/09-SRNP-101385
Ethmia janzeni[374]BLPDR689-10/10-SRNP-106314
Ethmia janzeni[375]BLPDH087-09/09-SRNP-102571
Ethmia janzeni[376]BLPEE407-12|12-SRNP-100406
Ethmia janzeni[377]BLPDR883-10/10-SRNP-106508
Ethmia janzeni[378]BLPEE409-12|12-SRNP-100408
Ethmia janzeni[379]BLPDR787-10/10-SRNP-106412
Ethmia janzeni[380]BLPDG100-09/09-SRNP-101644
Ethmia janzeni[381]BLPEE406-12|12-SRNP-100405
Ethmia janzeni[382]BLPEA493-11|11-SRNP-100960
Ethmia janzeni[383]BLPEB239-11|11-SRNP-101751
Ethmia janzeni[384]BLPEE248-12|12-SRNP-100247
Ethmia janzeni[385]BLPEE408-12|12-SRNP-100407
Ethmia janzeni[386]BLPDR902-10/10-SRNP-106527
Ethmia janzeni[387]BLPEE246-12|12-SRNP-100245
Ethmia janzeni[388]BLPEE244-12|12-SRNP-100243
Ethmia janzeni[389]BLPEA495-11|11-SRNP-100962
Ethmia hammella[390]BLPDO542-10/10-SRNP-103124
Ethmia hammella[391]BLPDM896-10/09-SRNP-110273
Ethmia hammella[392]BLPBD484-07/07-SRNP-100483
Ethmia hammella[393]BLPDC139-09/08-SRNP-107094
Ethmia hammella[394]BLPDX393-11/10-SRNP-113520
Ethmia hammella[395]BLPBD485-07/07-SRNP-100484
Ethmia hammella[396]BLPDM1437-10/09-SRNP-110814
Ethmia hammella[397]BLPDM1428-10/09-SRNP-110805
Ethmia hammella[398]BLPDM1254-10/09-SRNP-110631
Ethmia hammella[399]BLPDO298-10/10-SRNP-102880
Ethmia hammella[400]BLPDN2198-10/10-SRNP-102373
Ethmia hammella[401]BLPBG882-07/07-SRNP-103701
Ethmia hammella[402]BLPDS221-10/10-SRNP-106845
Ethmia hammella[403]BLPBE069-07/07-SRNP-101008
Ethmia hammella[404]ASARD373-11|11|INB0004263680
Ethmia hammella[405]ASARD427-11|11|INB0004269506
Ethmia hammella[406]BLPDK251-09/09-SRNP-105179
Ethmia hammella[407]BLPED610-11|11-SRNP-104212
Ethmia hammella[408]BLPDD179-09/08-SRNP-108074
Ethmia hammella[409]BLPDN1945-10/10-SRNP-102120
Ethmia hammella[410]BLPEB051-11|11-SRNP-101563
Ethmia hammella[411]BLPDM1078-10/09-SRNP-110455
Ethmia hammella[412]BLPDM2267-10/10-SRNP-100004
Ethmia hammella[413]ASARD144-11|11|INB0004238428
Ethmia hammella[414]BLPDN226-10/10-SRNP-100401
Ethmia hammella[415]ASARD177-11|11|INB0003230769
Ethmia hammella[416]BLPDD180-09/08-SRNP-108075
Ethmia hammella[417]BLPDN1933-10/10-SRNP-102108
Ethmia hammella[418]BLPDS679-10/10-SRNP-107303
Ethmia hammella[419]BLPDW478-11|10-SRNP-112370
Ethmia hammella[420]BLPDK1612-09/09-SRNP-106540
Ethmia hammella[421]BLPDO175-10/10-SRNP-102757
Ethmia hammella[422]BLPEB1032-11|11-SRNP-102544
Ethmia hammella[423]BLPDK1656-09/09-SRNP-106584
Ethmia hammella[424]BLPDM840-10/09-SRNP-110217
Ethmia hammella[425]BLPAD333-06/06-SRNP-103152
Ethmia hammella[426]BLPEB603-11|11-SRNP-102115
Ethmia hammella[427]ASARD140-11|11|INB0004238424
Ethmia hammella[428]BLPDM976-10/09-SRNP-110353
Ethmia hammella[429]BLPDK1625-09/09-SRNP-106553
Ethmia hammella[430]BLPDK1645-09/09-SRNP-106573
Ethmia hammella[431]ASARD175-11|11|INB0004166236
Ethmia hammella[432]BLPDW012-11|10-SRNP-111904
Ethmia hammella[433]BLPDK1753-09/09-SRNP-106681
Ethmia hammella[434]BLPBA768-07/06-SRNP-107911
Ethmia hammella[435]BLPDN1990-10/10-SRNP-102165
Ethmia hammella[436]ASARD371-11|11|INB0004263678
Ethmia hammella[437]BLPDL969-10/09-SRNP-108351
Ethmia hammella[438]BLPDN2116-10/10-SRNP-102291
Ethmia hammella[439]BLPCK522-08/08-SRNP-100615
Ethmia hammella[440]BLPDW472-11|10-SRNP-112364
Ethmia hammella[441]ASARD142-11|11|INB0004238426
Ethmia hammella[442]BLPDB213-09/08-SRNP-106228
Ethmia hammella[443]BLPDK1545-09/09-SRNP-106473
Ethmia hammella[444]BLPDM1415-10/09-SRNP-110792
Ethmia hammella[445]BLPBD486-07/07-SRNP-100485
Ethmia hammella[446]BLPDC321-09/08-SRNP-107276
Ethmia hammella[447]BLPDM1426-10/09-SRNP-110803
Ethmia hammella[448]BLPDS224-10/10-SRNP-106848
Ethmia hammella[449]BLPDO449-10/10-SRNP-103031
Ethmia hammella[450]BLPDN2120-10/10-SRNP-102295
Ethmia hammella[451]BLPDK164-09/09-SRNP-105092
Ethmia hammella[452]ASARD176-11|11|INB0003231100
Ethmia hammella[453]BLPDN1946-10/10-SRNP-102121
Ethmia hammella[454]BLPDM1352-10/09-SRNP-110729
Ethmia hammella[455]BLPCG345-08/07-SRNP-110590
Ethmia hammella[456]ASARD375-11|11|INB0004263682
Ethmia hammella[457]BLPDN1308-10/10-SRNP-101483
Ethmia hammella[458]BLPDS736-10/10-SRNP-107360
Ethmia hammella[459]BLPDB214-09/08-SRNP-106229
Ethmia hammella[460]BLPDM2281-10/10-SRNP-100018
Ethmia hammella[461]BLPEB1031-11|11-SRNP-102543
Ethmia hammella[462]BLPDL970-10/09-SRNP-108352
Ethmia hammella[463]BLPDU605-11/10-SRNP-110027
Ethmia hammella[464]BLPDQ380-10/10-SRNP-105006
Ethmia hammella[465]BLPEC417-11|11-SRNP-102974
Ethmia hammella[466]BLPDV550-11/10-SRNP-111207
Ethmia hammella[467]BLPAC887-06/06-SRNP-102766
Ethmia hammella[468]BLPED644-11|11-SRNP-104246

Ethmia hammella[467]BLPAC887-06/06-SRNP-102766
Ethmia hammella[468]BLPED644-11|11-SRNP-104246
Ethmia hammella[469]BLPEB217-11|11-SRNP-101729
Ethmia hammella[470]BLPDS632-10|10-SRNP-107256
Ethmia hammella[471]BLPDK1613-09/09-SRNP-106541
Ethmia hammella[472]BLPED686-11|11-SRNP-104288
Ethmia hammella[473]BLPDS131-10|10-SRNP-106755
Ethmia hammella[474]BLPDM848-10/09-SRNP-110225
Ethmia hammella[475]BLPCG644-08/07-SRNP-110889
Ethmia hammella[476]BLPDK241-09/09-SRNP-105169
Ethmia hammella[477]ASARD141-11|INB0004238425
Ethmia hammella[478]BLPDK250-09/09-SRNP-105178
Ethmia hammella[479]BLPDZ782-11|11-SRNP-100394
Ethmia hammella[480]BLPDV1159-11|10-SRNP-111816
Ethmia hammella[481]ASARD372-11|INB0004263679
Ethmia hammella[482]BLPDK1653-09/09-SRNP-106581
Ethmia hammella[483]BLPDX473-11|10-SRNP-113600
Ethmia hammella[484]BLPDN2301-10|10-SRNP-102476
Ethmia hammella[485]BLPDN1948-10|10-SRNP-102123
Ethmia hammella[486]ASARD374-11|INB0004263681
Ethmia hammella[487]BLPDN1022-10|10-SRNP-101197
Ethmia hammella[488]BLPDU331-11|10-SRNP-109753
Ethmia hammella[489]BLPDN491-10|10-SRNP-100666
Ethmia hammella[490]BLPDC322-09/08-SRNP-107277
Ethmia hammella[491]BLPDB212-09/08-SRNP-106227
Ethmia hammella[492]BLPDM794-10/09-SRNP-110171
Ethmia hammella[493]BLPDN2184-10|10-SRNP-102359
Ethmia helenmillerae[494]BLPED137-11|11-SRNP-103739
Ethmia helenmillerae[495]BLPDJ337-09/09-SRNP-104719
Ethmia helenmillerae[496]BLPED286-11|11-SRNP-103888
Ethmia helenmillerae[497]BLPED136-11|11-SRNP-103738
Ethmia helenmillerae[498]BLPED300-11|11-SRNP-103902
Ethmia helenmillerae[499]BLPEC709-11|11-SRNP-103266
Ethmia helenmillerae[500]BLPDJ857-09/09-SRNP-104289
Ethmia helenmillerae[501]BLPEC708-11|11-SRNP-103265
Ethmia helenmillerae[502]BLPEC953-11|11-SRNP-103510
Ethmia helenmillerae[503]BLPDJ172-09/09-SRNP-104554
Ethmia helenmillerae[504]BLPED405-11|11-SRNP-104007
Ethmia helenmillerae[505]BLPDK867-09/09-SRNP-105795
Ethmia helenmillerae[506]BLPED293-11|11-SRNP-103895
Ethmia helenmillerae[507]BLPED308-11|11-SRNP-103910
Ethmia helenmillerae[508]BLPEC707-11|11-SRNP-103264
Ethmia helenmillerae[509]BLPEC952-11|11-SRNP-103509
Ethmia helenmillerae[510]BLPED132-11|11-SRNP-103734
Ethmia helenmillerae[511]BLPDL581-10/09-SRNP-107963
Ethmia helenmillerae[512]MHMY3365-13|13-SRNP-101566
Ethmia helenmillerae[513]BLPDK862-09/09-SRNP-105790
Ethmia helenmillerae[514]BLPDK1010-09/09-SRNP-105938
Ethmia helenmillerae[515]BLPDL486-10/09-SRNP-107868
Ethmia helenmillerae[516]BLPDK881-09/09-SRNP-105809
Ethmia helenmillerae[517]BLPED284-11|11-SRNP-103886
Ethmia helenmillerae[518]BLPDJ336-09/09-SRNP-104718
Ethmia helenmillerae[519]BLPDL482-10/09-SRNP-107864
Ethmia helenmillerae[520]BLPDL593-10/09-SRNP-107975
Ethmia helenmillerae[521]BLPED135-11|11-SRNP-103737
Ethmia helenmillerae[522]BLPED325-11|11-SRNP-103927
Ethmia helenmillerae[523]BLPED133-11|11-SRNP-103735
Ethmia helenmillerae[524]BLPDK888-09/09-SRNP-105816
Ethmia helenmillerae[525]BLPED134-11|11-SRNP-103736
Ethmia linda[526]BLPED1179-12|11-SRNP-104781
Ethmia linda[527]BLPED1082-12|11-SRNP-104684
Ethmia lichyi[528]BLPDT1619-10|10-SRNP-109046
Ethmia lichyi[529]BLPEA339-11|11-SRNP-100806
Ethmia lichyi[530]MHMYK1493-11|10-SRNP-71337
Ethmia lichyi[531]MHMYK1483-11|10-SRNP-71376
Ethmia lichyi[532]MHMYK1488-11|10-SRNP-71375
Ethmia lichyi[533]MHMYO1175-11|11-SRNP-71375
Ethmia lichyi[534]MHAYA003-06/06-SRNP-30720
Ethmia lichyi[535]MHAYA001-06/06-SRNP-30714
Ethmia lichyi[536]MHMYG1677-10/09-SRNP-20517
Ethmia lichyi[537]MHMXD1156-06/06-SRNP-31744
Ethmia lichyi[538]MHAYA002-06/06-SRNP-30523
Ethmia lichyi[539]MHAYA163-06/03-SRNP-29318
Ethmia lichyi[540]MHMYK1522-11|10-SRNP-22372
Ethmia lichyi[541]BLPBD483-07/07-SRNP-100482
Ethmia lichyi[542]MHMYG133-10/09-SRNP-70588
Ethmia lichyi[543]MHMXR163-08/07-SRNP-32627
Ethmia lichyi[544]MHMYK1496-11|10-SRNP-31048
Ethmia lichyi[545]BLPDM766-10/09-SRNP-110143
Ethmia lichyi[546]MHMYG1317-10/09-SRNP-22510
Ethmia lichyi[547]MHMYG2175-10/09-SRNP-23036
Ethmia lichyi[548]MHMYR279-12|11-SRNP-72108
Ethmia lichyi[549]ASARD185-11|INB0003230743
Ethmia lichyi[550]MHMXL756-07/07-SRNP-31215
Ethmia lichyi[551]MHMYB667-09/08-SRNP-71629
Ethmia lichyi[552]MHAYA162-06/04-SRNP-27125
Ethmia lichyi[553]MHMYK1512-11|10-SRNP-30359
Ethmia lichyi[554]BLPCF308-08/07-SRNP-109613
Ethmia lichyi[555]MHMXI897-07/07-SRNP-31106
Ethmia lichyi[556]MHMYK1514-11|10-SRNP-30361
Ethmia lichyi[557]MHMYK1521-11|10-SRNP-22438
Ethmia lichyi[558]ASARD992-11|INB000422455
Ethmia lichyi[559]MHMXI896-07/07-SRNP-30826
Ethmia lichyi[560]MHMYG1318-10/09-SRNP-22511
Ethmia lichyi[561]BLPDY739-11|10-SRNP-115291
Ethmia lichyi[562]MHMYG134-10/09-SRNP-56762



Ethmia transversella[654]ASARD147-11|INB0004238431
 Ethmia transversella[655]BLPEA238-11|11-SRNP-100705
 Ethmia randyjonesi[656]BLPDX1338-11|10-SRNP-114465
 Ethmia randyjonesi[657]BLPEE2168-12|12-SRNP-102167
 Ethmia randyjonesi[658]BLPDM603-10|09-SRNP-109980
 Ethmia randyjonesi[659]BLPEE1659-12|12-SRNP-101658
 Ethmia randyjonesi[660]BLPDX885-11|10-SRNP-114012
 Ethmia randyjonesi[661]BLPBF932-07|07-SRNP-102811
 Ethmia randyjonesi[662]BLPEE1746-12|12-SRNP-101745
 Ethmia randyjonesi[663]BLPEE1745-12|12-SRNP-101744
 Ethmia randyjonesi[664]BLPDX884-11|10-SRNP-114011
 Ethmia randyjonesi[665]MHMYS2985-13|13-SRNP-101186
 Ethmia randyjonesi[666]MHMYS3314-13|13-SRNP-101515
 Ethmia randyjonesi[667]BLPDV1157-11|10-SRNP-111814
 Ethmia randyjonesi[668]BLPCP534-08|08-SRNP-104951
 Ethmia randyjonesi[669]BLPED1111-12|11-SRNP-104713
 Ethmia randyjonesi[670]BLPCL430-08|08-SRNP-101529
 Ethmia randyjonesi[671]BLPCC246-08|07-SRNP-106731
 Ethmia randyjonesi[672]BLPDM767-10|09-SRNP-110144
 Ethmia randyjonesi[673]BLPCD764-08|07-SRNP-108189
 Ethmia randyjonesi[674]BLPDT1877-10|10-SRNP-109304
 Ethmia nicholsonorum[675]MHMYC1651-09|09-SRNP-1054
 Ethmia nicholsonorum[676]MHMYC1645-09|09-SRNP-1051
 Ethmia nicholsonorum[677]MHMYC1647-09|09-SRNP-1052
 Ethmia nicholsonorum[678]MHMYC1643-09|09-SRNP-1050
 Ethmia nicholsonorum[679]MHMYC1646-09|09-SRNP-1053
 Ethmia turnerorum[680]MHAYA243-06|05-SRNP-45922
 Ethmia turnerorum[681]MHAYA244-06|05-SRNP-45921
 Ethmia turnerorum[682]MHMYK1526-11|10-SRNP-57341
 Ethmia turnerorum[683]MHMXH103-07|06-SRNP-23316
 Ethmia turnerorum[684]BLPED1019-12|11-SRNP-104621
 Ethmia turnerorum[685]BLPEC884-11|11-SRNP-103441
 Ethmia turnerorum[686]MHMXH102-07|06-SRNP-23318
 Ethmia turnerorum[687]BLPDZ104-11|10-SRNP-115511
 Ethmia turnerorum[688]BLPDK1198-09|09-SRNP-106126
 Ethmia turnerorum[689]BLPDK1199-09|09-SRNP-106127
 Ethmia normgershenzi[690]BLPDT290-10|10-SRNP-107717
 Ethmia normgershenzi[691]MHMYO2349-12|11-SRNP-31455
 Ethmia normgershenzi[692]MHMYT1795-13|12-SRNP-43605
 Ethmia normgershenzi[693]MHMYT746-13|12-SRNP-69689
 Ethmia normgershenzi[694]MHMYS861-12|12-SRNP-40158
 Ethmia normgershenzi[695]MHMYN1456-11|11-SRNP-30760
 Ethmia normgershenzi[696]BLPDL748-10|09-SRNP-108130
 Ethmia normgershenzi[697]ASHYC5097-12|12-SRNP-1546
 Ethmia normgershenzi[698]MHMYB1187-09|08-SRNP-32759
 Ethmia normgershenzi[699]MHMYS109-12|11-SRNP-3974
 Ethmia normgershenzi[700]MHMYN257-11|11-SRNP-41973
 Ethmia normgershenzi[701]MHMYT745-13|12-SRNP-31001
 Ethmia normgershenzi[702]MHMYN256-11|11-SRNP-41868
 Ethmia lesiesaulae[703]MHMYQ419-12|11-SRNP-43724
 Ethmia lesiesaulae[704]MHMYO2353-12|11-SRNP-43733
 Ethmia lesiesaulae[705]MHAYA248-06|04-SRNP-56091
 Ethmia lesiesaulae[706]MHMYO2205-12|11-SRNP-43735
 Ethmia lesiesaulae[707]MHAYA246-06|04-SRNP-56092
 Ethmia lesiesaulae[708]MHMYO2354-12|11-SRNP-43734
 Ethmia lesiesaulae[709]MHMYT1793-13|12-SRNP-43845
 Ethmia lesiesaulae[710]MHAYA247-06|05-SRNP-32421
 Ethmia lesiesaulae[711]MHMYO1167-11|11-SRNP-42800
 Ethmia lesiesaulae[712]MHMYS860-12|12-SRNP-41015
 Ethmia lesiesaulae[713]MHMYT2237-13|13-SRNP-30094
 Ethmia lesiesaulae[714]MHMYO2149-12|11-SRNP-1973
 Ethmia lesiesaulae[715]MHMYQ420-12|11-SRNP-43723
 Ethmia lesiesaulae[716]MHMYO2351-12|11-SRNP-3080
 Ethmia lesiesaulae[717]MHMYG2176-10|09-SRNP-23687
 Ethmia lesiesaulae[718]MHAYA245-06|04-SRNP-26499
 Ethmia lesiesaulae[719]MHMYO2350-12|11-SRNP-43731
 Ethmia lesiesaulae[720]MHMYG1556-10|09-SRNP-71951
 Ethmia lesiesaulae[721]MHMYO1174-11|11-SRNP-1974
 Ethmia lesiesaulae[722]MHMYS110-12|11-SRNP-3975
 Ethmia lesiesaulae[723]MHMYO2352-12|11-SRNP-43732
 Ethmia lesiesaulae[724]MHMYG1314-10|09-SRNP-22499
 Ethmia lesiesaulae[725]MHMYG1274-10|09-SRNP-4697
 Ethmia lesiesaulae[726]MHMYR2315-12|11-SRNP-3976
 Ethmia lesiesaulae[727]MHMYN2235-13|12-SRNP-5494
 Ethmia lesiesaulae[728]MHMYT1794-13|12-SRNP-44107
 Ethmia lesiesaulae[729]MHMYO2206-12|11-SRNP-43861
 Ethmia petersterlingi[730]BLPEE2147-12|12-SRNP-102146
 Ethmia petersterlingi[731]BLPDM180-10|09-SRNP-109557
 Ethmia petersterlingi[732]BLPDY202-11|10-SRNP-114754
 Ethmia petersterlingi[733]MHMYQ303-12|11-SRNP-21599
 Ethmia petersterlingi[734]MHMYO2355-12|11-SRNP-21573
 Ethmia petersterlingi[735]MHMYK1323-11|10-SRNP-55705
 Ethmia petersterlingi[736]BLPED1443-12|11-SRNP-105045
 Ethmia petersterlingi[737]BLPDM504-10|09-SRNP-109881
 Ethmia catapeltica[738]BLPDF217-09|09-SRNP-100821
 Ethmia catapeltica[739]BLPDM1474-10|09-SRNP-110851
 Ethmia catapeltica[740]BLPDL1507-10|09-SRNP-108889
 Ethmia catapeltica[741]BLPDF814-09|09-SRNP-101418
 Ethmia catapeltica[742]MHMYG196-10|09-SRNP-76737
 Ethmia catapeltica[743]MHMYK334-11|10-SRNP-3000
 Ethmia catapeltica[744]BLPDF762-09|09-SRNP-101366
 Ethmia catapeltica[745]BLPDE446-09|09-SRNP-100110
 Ethmia catapeltica[746]MHMYD964-09|09-SRNP-41280
 Ethmia catapeltica[747]MHMYK335-11|10-SRNP-3316
 Ethmia catapeltica[748]MHMYC1642-09|09-SRNP-40755
 Ethmia catapeltica[749]MHMXF079-07|06-SRNP-41889

Ethmia catapeltica[747]MHMYK555-11|10-SRNP-5516
 Ethmia catapeltica[748]MHMYC1642-09/09-SRNP-40755
 Ethmia catapeltica[749]MHMXF079-07/06-SRNP-41889
 Ethmia catapeltica[750]MHMYD978-09/09-SRNP-2831
 Ethmia catapeltica[751]MHMYG1555-10/09-SRNP-76736
 Ethmia catapeltica[752]ASHYC5207-12|12-SRNP-1699
 Ethmia catapeltica[753]MHMXP812-08/07-SRNP-41707
 Ethmia catapeltica[754]MHMXH100-07/06-SRNP-43051
 Ethmia catapeltica[755]MHMYO2204-12|11-SRNP-43753
 Ethmia catapeltica[756]MHMYB1192-09/08-SRNP-42442
 Ethmia catapeltica[757]MHMYB1191-09/08-SRNP-42447
 Ethmia catapeltica[758]MHMYO2203-12|11-SRNP-43742
 Ethmia catapeltica[759]ASHYC5208-12|12-SRNP-1700
 Ethmia catapeltica[760]MHMYT743-13|12-SRNP-43974
 Ethmia catapeltica[761]MHMXJ051-07/06-SRNP-44099
 Ethmia catapeltica[762]MHMYG195-10/09-SRNP-76735
 Ethmia catapeltica[763]BLPED1018-12|11-SRNP-104620
 Ethmia catapeltica[764]MHMYR2199-12|11-SRNP-76291
 Ethmia catapeltica[765]BLPDL1236-10/09-SRNP-108618
 Ethmia catapeltica[766]MHMYD897-09/09-SRNP-2180
 Ethmia catapeltica[767]MHMYT1796-13|12-SRNP-43130
 Ethmia catapeltica[768]MHMYT2290-13|12-SRNP-4120
 Ethmia catapeltica[769]MHMYT2313-13|13-SRNP-75302
 Ethmia catapeltica[770]MHMYB1193-09/08-SRNP-42446
 Ethmia catapeltica[771]MHMYT2312-13|13-SRNP-75299
 Ethmia catapeltica[772]MHMYN258-11|11-SRNP-41880
 Ethmia catapeltica[773]MHMXF075-07/06-SRNP-43050
 Ethmia catapeltica[774]MHMYK681-11|10-SRNP-3435
 Ethmia catapeltica[775]MHMYT747-13|12-SRNP-43344
 Ethmia catapeltica[776]MHMYB1188-09/09-SRNP-410
 Ethmia catapeltica[777]MHMYB1186-09/08-SRNP-4960
 Ethmia catapeltica[778]MHMYK535-11|10-SRNP-4226
 Ethmia catapeltica[779]MHMYT744-13|12-SRNP-43969
 Ethmia catapeltica[780]MHMYT1931-13|12-SRNP-3105
 Ethmia catapeltica[781]MHMYK333-11|10-SRNP-42304
 Ethmia catapeltica[782]MHMXH099-07/06-SRNP-43052
 Ethmia catapeltica[783]MHMYB1190-09/08-SRNP-42445
 Ethmia catapeltica[784]MHMYK1491-11|10-SRNP-42305
 Ethmia catapeltica[785]MHMXH101-07/06-SRNP-43542
 Ethmia catapeltica[786]MHMYC1655-09/09-SRNP-40756
 Ethmia catapeltica[787]MHMYJ1256-11|10-SRNP-4552
 Ethmia catapeltica[788]MHMYG2358-10/10-SRNP-40184
 Ethmia catapeltica[789]MHMYG2298-10/10-SRNP-40183
 Ethmia catapeltica[790]MHMYT2289-13|12-SRNP-4178
 Ethmia catapeltica[791]MHMXF088-07/06-SRNP-43133
 Ethmia catapeltica[792]MHMYS052-12|11-SRNP-44543
 Ethmia catapeltica[793]MHMXJ052-07/06-SRNP-43792
 Ethmia catapeltica[794]MHMYG1456-10/09-SRNP-42501
 Ethmia catapeltica[795]MHMYR2314-12|11-SRNP-44541
 Ethmia catapeltica[796]MHMXP813-08/07-SRNP-41700
 Ethmia catapeltica[797]MHMXF077-07/06-SRNP-43541
 Ethmia catapeltica[798]BLPDM2040-10/09-SRNP-111417
 Ethmia catapeltica[799]MHMXD1157-06/06-SRNP-41888
 Ethmia catapeltica[800]MHMYE1835-09/09-SRNP-75407
 Ethmia catapeltica[801]MHMYK1487-11|10-SRNP-42303
 Ethmia catapeltica[802]MHMYG334-10/09-SRNP-6587
 Ethmia catapeltica[803]MHMYB1185-09/08-SRNP-4959
 Ethmia catapeltica[804]MHMYG2317-10/10-SRNP-484
 Ethmia catapeltica[805]MHMYT1797-13|12-SRNP-43131
 Ethmia catapeltica[806]MHMXD1158-06/06-SRNP-41887
 Ethmia catapeltica[807]BLPDM1253-10/09-SRNP-110630
 Ethmia catapeltica[808]MHMYT2210-13|12-SRNP-5442
 Ethmia catapeltica[809]MHMYC1644-09/09-SRNP-409
 Ethmia catapeltica[810]MHMYE1623-09/09-SRNP-75501
 Ethmia catapeltica[811]MHMYT1932-13|12-SRNP-3106
 Ethmia catapeltica[812]BLPDK2282-09/09-SRNP-107210
 Ethmia catapeltica[813]BLPDF812-09/09-SRNP-101416
 Ethmia catapeltica[814]BLPDF811-09/09-SRNP-101415
 Ethmia catapeltica[815]MHMYK281-11|10-SRNP-2910
 Ethmia catapeltica[816]MHMYK282-11|10-SRNP-2994
 Ethmia catapeltica[817]BLPDF810-09/09-SRNP-101414
 Ethmia catapeltica[818]BLPDF042-09/09-SRNP-100646
 Ethmia catapeltica[819]MHMYD1127-09/09-SRNP-2065
 Ethmia catapeltica[820]BLPDE401-09/09-SRNP-100065
 Ethmia catapeltica[821]MHMYS334-12|11-SRNP-44538
 Ethmia catapeltica[822]MHMYG194-10/09-SRNP-6589
 Ethmia catapeltica[823]MHMYB1189-09/08-SRNP-42443
 Ethmia catapeltica[824]MHMYG197-10/09-SRNP-5705
 Ethmia catapeltica[825]MHMYE1622-09/09-SRNP-75396
 Ethmia catapeltica[826]BLPDM648-10/09-SRNP-110025
 Ethmia catapeltica[827]MHMYK1370-11|10-SRNP-300

Ethmia laphamorum[828]BLPED870-11|11-SRNP-104472
 Ethmia laphamorum[829]BLPED2585-12|11-SRNP-106187
 Ethmia laphamorum[830]BLPDI870-09/09-SRNP-104302
 Ethmia laphamorum[831]BLPDJ277-09/09-SRNP-104659
 Ethmia laphamorum[832]MHMYS2809-13|13-SRNP-101010
 Ethmia laphamorum[833]BLPAA142-06/06-SRNP-100141
 Ethmia laphamorum[834]BLPED2128-12|11-SRNP-105730
 Ethmia laphamorum[835]MHMYS2810-13|13-SRNP-101011
 Ethmia laphamorum[836]BLPED2065-12|11-SRNP-105667
 Ethmia laphamorum[837]BLPED054-11|11-SRNP-103656
 Ethmia laphamorum[838]BLPDD752-09/08-SRNP-108647
 Ethmia laphamorum[839]BLPBH826-07/07-SRNP-104585
 Ethmia laphamorum[840]BLPED2064-12|11-SRNP-105666
 Ethmia laphamorum[841]BLPDK825-09/09-SRNP-105753
 Ethmia laphamorum[842]BLPDM1910-10/09-SRNP-111287
 Ethmia laphamorum[843]BLPED2068-12|11-SRNP-105670

Ethmia laphamorum[841]BLPK825-09/09-SRNP-105753
 Ethmia laphamorum[842]BLPDM1910-10/09-SRNP-111287
 Ethmia laphamorum[843]BLPED2068-12/11-SRNP-105670
 Ethmia laphamorum[844]BLPED2067-12/11-SRNP-105669
 Ethmia laphamorum[845]BLPDM1735-10/09-SRNP-111112
 Ethmia laphamorum[846]BLPED508-11/11-SRNP-104110
 Ethmia laphamorum[847]MHMYK1494-11/10-SRNP-13173
 Ethmia laphamorum[848]BLPEC883-11/11-SRNP-103440
 Ethmia laphamorum[849]BLPAE714-06/06-SRNP-104473
 Ethmia laphamorum[850]BLPDJ045-09/09-SRNP-104427
 Ethmia laphamorum[851]BLPCI505-08/07-SRNP-112630
 Ethmia laphamorum[852]BLPDJ281-09/09-SRNP-104663
 Ethmia laphamorum[853]BLPED2233-12/11-SRNP-105835
 Ethmia laphamorum[854]BLPCI234-08/07-SRNP-112359
 Ethmia laphamorum[855]BLPAE709-06/06-SRNP-104468
 Ethmia laphamorum[856]BLPCI503-08/07-SRNP-112628
 Ethmia laphamorum[857]BLPED2129-12/11-SRNP-105731
 Ethmia laphamorum[858]BLPDJ461-09/09-SRNP-104843
 Ethmia laphamorum[859]BLPCI507-08/07-SRNP-112632
 Ethmia laphamorum[860]BLPED2069-12/11-SRNP-105671
 Ethmia laphamorum[861]BLPED055-11/11-SRNP-103657
 Ethmia laphamorum[862]BLPDJ278-09/09-SRNP-104660
 Ethmia laphamorum[863]BLPEC1007-11/11-SRNP-103564
 Ethmia laphamorum[864]BLPDM1895-10/09-SRNP-111272
 Ethmia laphamorum[865]BLPAA150-06/06-SRNP-100149
 Ethmia laphamorum[866]BLPBH824-07/07-SRNP-104583
 Ethmia laphamorum[867]BLPED2584-12/11-SRNP-106186
 Ethmia laphamorum[868]BLPEC820-11/11-SRNP-103377
 Ethmia laphamorum[869]BLPCI508-08/07-SRNP-112633
 Ethmia laphamorum[870]BLPED2063-12/11-SRNP-105665
 Ethmia laphamorum[871]BLPED2062-12/11-SRNP-105664
 Ethmia laphamorum[872]BLPED2131-12/11-SRNP-105733
 Ethmia laphamorum[873]BLPCI233-08/07-SRNP-112358
 Ethmia laphamorum[874]BLPED053-11/11-SRNP-103655
 Ethmia laphamorum[875]BLPAE523-06/06-SRNP-104282
 Ethmia laphamorum[876]BLPED649-11/11-SRNP-104251
 Ethmia laphamorum[877]BLPED2327-12/11-SRNP-105929
 Ethmia laphamorum[878]BLPAE711-06/06-SRNP-104470
 Ethmia laphamorum[879]BLPED2234-12/11-SRNP-105836
 Ethmia laphamorum[880]BLPDM711-10/09-SRNP-110088
 Ethmia laphamorum[881]BLPDJ134-09/09-SRNP-104516
 Ethmia laphamorum[882]BLPDM712-10/09-SRNP-110089
 Ethmia laphamorum[883]BLPED2236-12/11-SRNP-105838
 Ethmia laphamorum[884]BLPDJ1869-09/09-SRNP-104301
 Ethmia laphamorum[885]BLPED2130-12/11-SRNP-105732
 Ethmia laphamorum[886]BLPDJ871-09/09-SRNP-104303
 Ethmia laphamorum[887]BLPDM1734-10/09-SRNP-111111
 Ethmia laphamorum[888]BLPED2402-12/11-SRNP-106004
 Ethmia laphamorum[889]BLPCA749-08/07-SRNP-105354
 Ethmia laphamorum[890]BLPED2159-12/11-SRNP-105761
 Ethmia laphamorum[891]BLPED052-11/11-SRNP-103654
 Ethmia laphamorum[892]BLPAE710-06/06-SRNP-104469
 Ethmia laphamorum[893]BLPED056-11/11-SRNP-103658
 Ethmia laphamorum[894]MHMYS2811-13/13-SRNP-101012
 Ethmia laphamorum[895]BLPED650-11/11-SRNP-104252
 Ethmia laphamorum[896]BLPDM1911-10/09-SRNP-111288
 Ethmia laphamorum[897]BLPEC1008-11/11-SRNP-103565
 Ethmia laphamorum[898]BLPDM1896-10/09-SRNP-111273
 Ethmia laphamorum[899]BLPEC818-11/11-SRNP-103375
 Ethmia laphamorum[900]BLPDE037-09/08-SRNP-108873
 Ethmia laphamorum[901]BLPDE214-09/08-SRNP-109049
 Ethmia laphamorum[902]BLPDJ280-09/09-SRNP-104662
 Ethmia laphamorum[903]BLPDM713-10/09-SRNP-110090
 Ethmia laphamorum[904]BLPED051-11/11-SRNP-103653
 Ethmia laphamorum[905]BLPAF802-07/06-SRNP-105501
 Ethmia laphamorum[906]BLPAE712-06/06-SRNP-104471
 Ethmia laphamorum[907]BLPCI504-08/07-SRNP-112629
 Ethmia laphamorum[908]BLPEC819-11/11-SRNP-103376
 Ethmia laphamorum[909]BLPED2066-12/11-SRNP-105668
 Ethmia laphamorum[910]BLPDE213-09/08-SRNP-109048
 Ethmia laphamorum[911]BLPDJ135-09/09-SRNP-104517
 Ethmia laphamorum[912]BLPCI506-08/07-SRNP-112631
 Ethmia nigritaenia[913]BLPDE036-09/08-SRNP-108872
 Ethmia nigritaenia[914]BLPEC1006-11/11-SRNP-103563
 Ethmia nigritaenia[915]BLPAG263-07/06-SRNP-105902
 Ethmia nigritaenia[916]BLPCA748-08/07-SRNP-105353
 Ethmia nigritaenia[917]BLPDJ279-09/09-SRNP-104661
 Ethmia nigritaenia[918]BLPAE713-06/06-SRNP-104472
 Ethmia nigritaenia[919]BLPAA564-06/06-SRNP-100563
 Ethmia nigritaenia[920]BLPED869-11/11-SRNP-104471
 Ethmia nigritaenia[921]BLPED050-11/11-SRNP-103652
 Ethmia nigritaenia[922]BLPED929-11/11-SRNP-104531
 Ethmia nigritaenia[923]BLPEC1005-11/11-SRNP-103562
 Ethmia nigritaenia[924]BLPDM1897-10/09-SRNP-111274
 Ethmia nigritaenia[925]MHAYA156-06/93-SRNP-4250
 Ethmia nigritaenia[926]BLPED2235-12/11-SRNP-105837
 Ethmia nigritaenia[927]BLPED745-11/11-SRNP-104347
 Ethmia nigritaenia[928]BLPEC737-11/11-SRNP-103294
 Ethmia baliostola[929]BLPDR571-10/10-SRNP-106196
 Ethmia baliostola[930]BLPDJ310-09/09-SRNP-103742
 Ethmia baliostola[931]MHMYD939-09/09-SRNP-40650
 Ethmia baliostola[932]MHMYK1504-11/10-SRNP-55253
 Ethmia baliostola[933]BLPBF144-07/07-SRNP-102023
 Ethmia baliostola[934]BLPAC882-06/06-SRNP-102761
 Ethmia baliostola[935]BLPAC883-06/06-SRNP-102762
 Ethmia baliostola[936]MHMYK1490-11/10-SRNP-42326

Ethmia baliostola[935]BLPAC883-06/06-SRNP-102762
Ethmia baliostola[936]MHMYK1490-11/10-SRNP-42326
Ethmia baliostola[937]MHMYG1678-10/09-SRNP-23045
Ethmia baliostola[938]MHMYC1652-09/09-SRNP-40621
Ethmia baliostola[939]BLPEB596-11/11-SRNP-102108
Ethmia baliostola[940]BLPCM736-08/08-SRNP-102333
Ethmia baliostola[941]BLPCP631-08/08-SRNP-105048
Ethmia baliostola[942]MHMYK1505-11/10-SRNP-55291
Ethmia baliostola[943]MHMYK1513-11/10-SRNP-55277
Ethmia baliostola[944]BLPDS074-10/10-SRNP-106698
Ethmia baliostola[945]MHMYC1654-09/09-SRNP-40635
Ethmia baliostola[946]MHMYC1649-09/09-SRNP-40644
Ethmia baliostola[947]MHMXF085-07/06-SRNP-4332
Ethmia baliostola[948]BLPDH789-09/09-SRNP-103273
Ethmia baliostola[949]BLPAD185-06/06-SRNP-103004
Ethmia baliostola[950]MHAYA155-06/05-SRNP-22637
Ethmia baliostola[951]BLPED507-11/11-SRNP-104109
Ethmia baliostola[952]BLPAD186-06/06-SRNP-103005
Ethmia baliostola[953]MHMYK1511-11/10-SRNP-41340
Ethmia baliostola[954]BLPDS377-10/10-SRNP-107001
Ethmia baliostola[955]MHMYG1554-10/09-SRNP-23049
Ethmia baliostola[956]MHMYC1650-09/09-SRNP-40633
Ethmia baliostola[957]MHMYT1562-13/12-SRNP-41602
Ethmia baliostola[958]BLPDL1057-10/09-SRNP-108439
Ethmia baliostola[959]MHMYG1316-10/09-SRNP-23044
Ethmia baliostola[960]MHMYD1145-09/09-SRNP-40645
Ethmia baliostola[961]MHMYC1743-09/09-SRNP-40632
Ethmia baliostola[962]MHMYD933-09/09-SRNP-40661
Ethmia baliostola[963]BLPDH788-09/09-SRNP-103272
Ethmia baliostola[964]MHAYA152-06/05-SRNP-22239
Ethmia baliostola[965]BLPAC885-06/06-SRNP-102764
Ethmia baliostola[966]MHMXD1159-06/06-SRNP-20084
Ethmia baliostola[967]BLPDW379-11/10-SRNP-112271
Ethmia baliostola[968]MHMYO1169-11/11-SRNP-69909
Ethmia baliostola[969]BLPED689-11/11-SRNP-104291
Ethmia baliostola[970]MHMYK1515-11/09-SRNP-22104
Ethmia baliostola[971]MHMYO1170-11/11-SRNP-69908
Ethmia baliostola[972]MHMXH108-07/06-SRNP-21628
Ethmia baliostola[973]MHMYK1518-11/10-SRNP-20938
Ethmia baliostola[974]BLPBE085-07/07-SRNP-101024
Ethmia baliostola[975]BLPBD660-07/07-SRNP-100659
Ethmia baliostola[976]MHMYT1564-13/12-SRNP-41604
Ethmia baliostola[977]MHMYC1656-09/09-SRNP-40631
Ethmia baliostola[978]BLPCM586-08/08-SRNP-102183
Ethmia baliostola[979]BLPED1142-12/11-SRNP-104744
Ethmia baliostola[980]BLPDW378-11/10-SRNP-112270
Ethmia baliostola[981]MHMYK1502-11/10-SRNP-55292
Ethmia baliostola[982]MHMYD1146-09/09-SRNP-40643
Ethmia baliostola[983]MHMYD936-09/09-SRNP-40656
Ethmia baliostola[984]MHMXD135-06/05-SRNP-22492
Ethmia baliostola[985]MHAYA153-06/05-SRNP-22231
Ethmia baliostola[986]MHAYA166-06/05-SRNP-22484
Ethmia baliostola[987]MHMYK1484-11/10-SRNP-42325
Ethmia baliostola[988]BLPDT337-10/10-SRNP-107764
Ethmia baliostola[989]BLPAB656-06/06-SRNP-101595
Ethmia baliostola[990]MHMXD134-06/05-SRNP-22486
Ethmia baliostola[991]BLPAC884-06/06-SRNP-102763
Ethmia baliostola[992]BLPED566-11/11-SRNP-104168
Ethmia baliostola[993]MHMYK1519-11/10-SRNP-20941
Ethmia baliostola[994]BLPAD184-06/06-SRNP-103003
Ethmia baliostola[995]MHMYK1508-11/10-SRNP-55250
Ethmia baliostola[996]MHMYO1173-11/11-SRNP-69911
Ethmia baliostola[997]MHMXD136-06/06-SRNP-20088
Ethmia baliostola[998]MHMYC1648-09/09-SRNP-40639
Ethmia baliostola[999]MHMYG1679-10/09-SRNP-23047
Ethmia baliostola[1000]MHAYA165-06/03-SRNP-29320
Ethmia baliostola[1001]BLPED567-11/11-SRNP-104169
Ethmia baliostola[1002]MHMYC1653-09/09-SRNP-40638
Ethmia baliostola[1003]MHMYK1506-11/10-SRNP-55298
Ethmia baliostola[1004]BLPED1143-12/11-SRNP-104745
Ethmia baliostola[1005]MHMXH104-07/06-SRNP-21627
Ethmia baliostola[1006]BLPDL1058-10/09-SRNP-108440
Ethmia baliostola[1007]ASARD200-11/11/INB0004249211
Ethmia baliostola[1008]MHMYG1313-10/09-SRNP-21564
Ethmia baliostola[1009]MHMYS3406-13/13-SRNP-101607
Ethmia baliostola[1010]MHAYA167-06/05-SRNP-22404
Ethmia baliostola[1011]MHMYC1641-09/09-SRNP-40634
Ethmia baliostola[1012]BLPDS376-10/10-SRNP-107000
Ethmia baliostola[1013]BLPCM053-08/08-SRNP-101650
Ethmia baliostola[1014]BLPED1112-12/11-SRNP-104714
Ethmia baliostola[1015]MHMYK1503-11/10-SRNP-41358
Ethmia baliostola[1016]MHMYK1509-11/10-SRNP-55300
Ethmia baliostola[1017]MHAYA169-06/05-SRNP-22238
Ethmia baliostola[1018]MHMXH107-07/06-SRNP-21624
Ethmia baliostola[1019]MHAYA154-06/05-SRNP-22230
Ethmia baliostola[1020]MHMXD137-06/05-SRNP-22489
Ethmia baliostola[1021]MHMXH106-07/06-SRNP-21626
Ethmia baliostola[1022]BLPAC002-06/06-SRNP-101881
Ethmia baliostola[1023]BLPED1141-12/11-SRNP-104743
Ethmia baliostola[1024]MHMYG1676-10/09-SRNP-21565
Ethmia baliostola[1025]MHMXH105-07/06-SRNP-22854
Ethmia baliostola[1026]MHMYK1507-11/10-SRNP-41338
Ethmia baliostola[1027]BLPDK165-09/09-SRNP-105093
Ethmia baliostola[1028]MHAYA168-06/05-SRNP-22236
Ethmia baliostola[1029]BLPAC886-06/06-SRNP-102765
Ethmia baliostola[1030]BLPCG646-08/07-SRNP-110891

