

Figure S1. IQ-Tree maximum-likelihood phylogeny on concatenated dataset containing 282 specimens of *Neobrachinus* and outgroups with bootstrap values. Phylogeny is color-coded by species group. Royal blue = polyphyletic *fumans* group. Red = misidentified specimens.

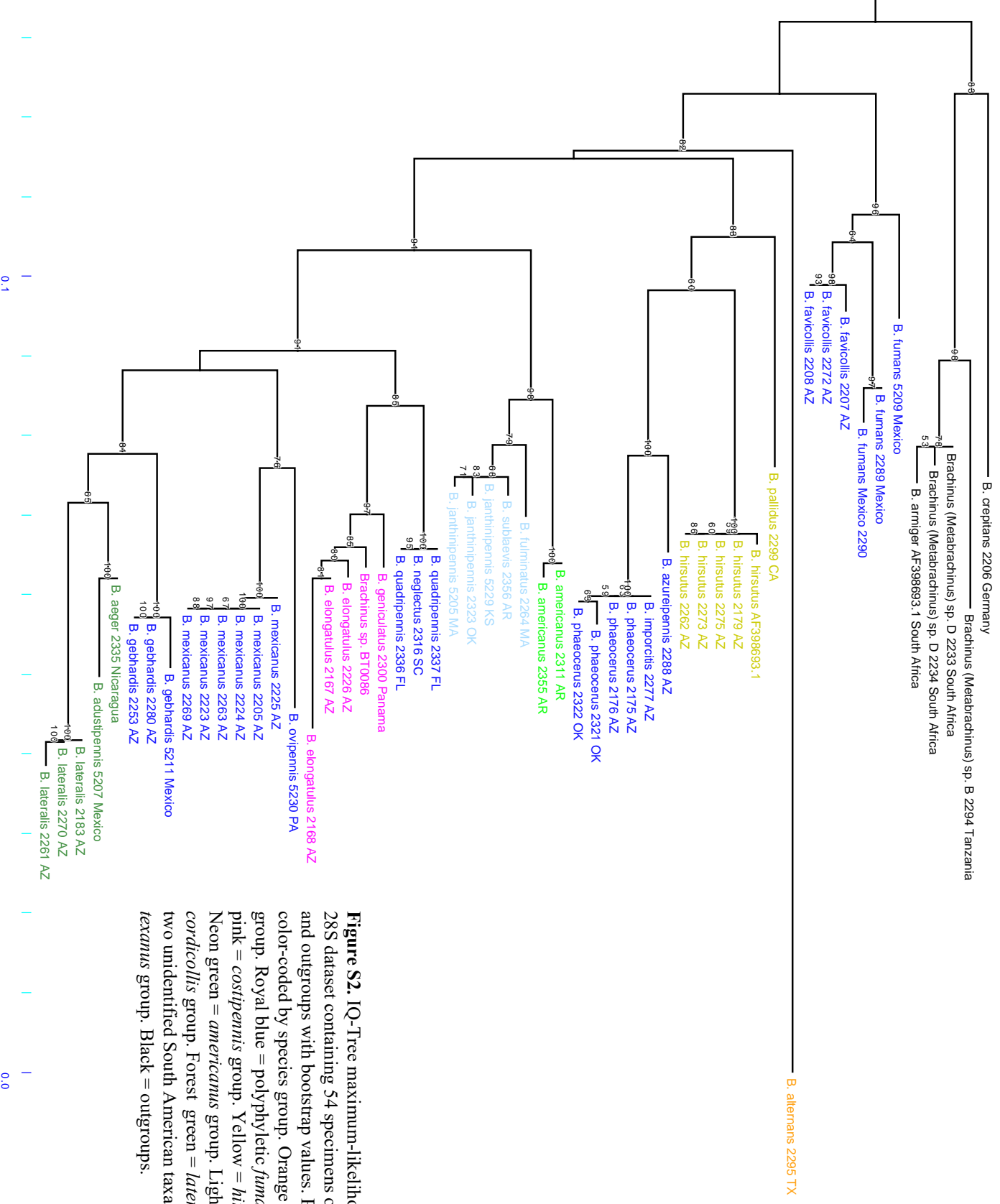


Figure S2. IQ-Tree maximum-likelihood phylogeny on 28S dataset containing 54 specimens of *Neobrachinus* and outgroups with bootstrap values. Phylogeny is color-coded by species group. Orange = *alternans* group. Royal blue = polyphyletic *fumans* group. Light blue = *costipennis* group. Yellow = *hirsutus* group. Neon green = *americanus* group. Light blue = *cordicollis* group. Forest green = *lateralis* group and two unidentified South American taxa. Neon pink = *texanus* group. Black = outgroups.

0.1

0.0

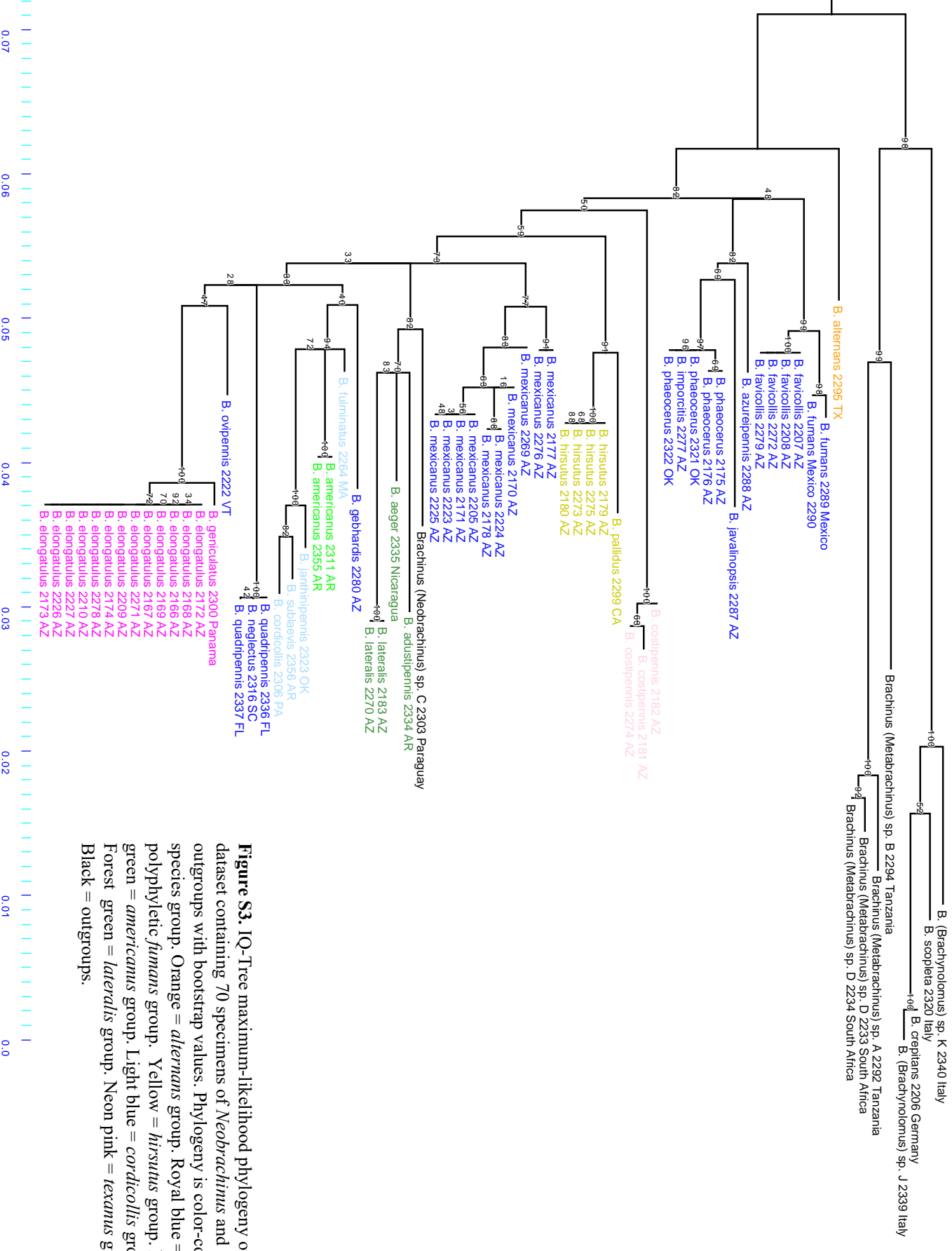


Figure S3. IQ-Tree maximum-likelihood phylogeny on CAD dataset containing 70 specimens of *Neobrachinus* and outgroups with bootstrap values. Phylogeny is color-coded by species group. Orange = *alternans* group. Royal blue = polyphyletic *fumans* group. Yellow = *hirsutus* group. Neon green = *americanus* group. Light blue = *cordicollis* group. Forest green = *lateralis* group. Neon pink = *texanus* group. Black = outgroups.

Table S1. Voucher specimens. Voucher number, collection information, and GenBank or BOLD accession numbers are provided for each specimen.

Voucher Species	Voucher Number	Location and Collecting Data	28S	CAD	COI
<i>B. aababba</i> DNA5208	UASMM365780	MEXICO: San Luis Potosi: 89km W of Ciudad del Maiz on Rte 80, 14 Oct 1965, coll. G.E. Ball, D.R. Whitehead			OP575849
<i>B. adustipennis</i> DNA5207	UASMM343307	MEXICO: Sonora: Mazatan, 13 Aug 2012, T.R. Van Devender, J. Palling	OP575866		
<i>B. adustipennis</i> DNA2334		USA: AR: Montgomery Co., Lake Ouachita, 2 mi N Joplin off US 270, 11 Aug 2010, coll. Davidson, Acciavati, & Baldwin		KU937692	KU937768
<i>B. adustipennis</i>		USA: FL: Sarasota Co., Myakka River State Park			BBCCA508-12 BBCCA510-12 BBCCA522-12 BBCCA523-12 BBCCA524-12 BBCCA525-12
<i>B. adustipennis</i>	UAIC1012194	USA: GA: Bibb Co., Macon			NEONU719-11
<i>B. aeger</i> DNA2335		NICARAGUA: Granada Prov., Domitila Reserva Silvestre Privada ESE Nandaine, 120m, 7 Jun 2005, coll. C.B. Barr, C.S. Chaboo	OP575867	KU937693	KU937769
<i>B. alternans</i>		USA: AL: Choctaw Co., Lenoir Landing NEON			BETN6017-19 BETN8994-20 BETN8975-20 BETN8995-20
<i>B. alternans</i>		USA: AL: Greene Co., Dead Lake NEON			BETN8912-20 BETN8992-20 BETN9009-20
<i>B. alternans</i>		USA: FL: Putnam Co., Ordway-Swisher Biological Station NEON			BETN2541-18
<i>B. alternans</i>		USA: KS: Douglas Co., KU Field Station NEON			BETN5784-19 BETN8589-20 BETN8625-20

					BETN8634-20
					BETN8636-20
<i>B. alternans</i> DNA5203	UASM268733	USA: KS: Douglas Co., State Lake, 17 July 1992, coll. B. Busby		OP575850	
<i>B. alternans</i>		USA: KS: Jefferson Co., KU Field Station NEON			BETN8629-20 ISUP150-14 ISUP176-14 ISUP177-14 ISUP179-14 ISUP180-14 ISUP181-14 ISUP182-14 ISUP183-14 ISUP184-14 ISUP185-14 ISUP186-14
<i>B. alternans</i>		USA: KS: Riley Co., Konza Prairie Biological Station NEON			BETN8753-20 BETN8646-20 BETN5975-19
<i>B. alternans</i>		USA: MD: Anne Arundel Co., Smithsonian Environmental Research Center NEON			BETN1400-18 BETN4718-19
<i>B. alternans</i> DNA2295		USA: TX: Potter Co., Plum Creek, 1 Oct 2008, coll. Vaughan, Jones	OP575868	KU937682	KU937757
<i>B. americanus</i> DNA2311		USA: AR: Montgomery Co., Little Missouri Falls, 8 Apr 2011, coll. B. Baldwin	OP575870	KU937686	KU937762
<i>B. americanus</i> DNA2355		USA: AR: Montgomery Co., Little Missouri Falls, 8 Apr 2011, coll. B. Baldwin	OP575869	KU937699	
<i>B. armiger</i>		Specific locality not reported	AF398693		
<i>B. azureipennis</i> DNA2288	UAIC1047982	USA: AZ: Cochise Co., San Pedro River near Hwy. 82, 1180 m, 4 Oct 2012, coll. J. Schaller	OP575871	KU937676	KU937752
<i>B. cibolensis</i> DNA5223	UASM348387	MEXICO: Sonora: Varela Ranch, Canon Bonita, 20-21 Aug 1982, coll. G.E. Ball, S. McCleve, D.R. Maddison			OP575851
<i>B. cibolensis</i>	UAIC1012200	USA: AZ: Cochise Co., Guadalupe Canyon			NEONU720-11

<i>B. cinctipennis</i> DNA5225	UASM367007	MEXICO: Jalisco: Lagos de Moreno, 7 Sep 1967, coll. T.L. Erwin, R.E. Leech		OP575852
<i>B. cordicollis</i> DNA2306		USA: PA: Lycorning Co. Loyalsock Creek, 4.8km E of Barbours, 230m, 7 May 2003, coll. M.J. Kowalski	KU937685	KU937761
<i>B. costipennis</i>	UAIC1012265	USA: AZ: Cochise Co., Guadalupe Canyon		NEONU725-11
<i>B. costipennis</i> DNA2181	UAIC1000016	USA: AZ: Cochise Co., San Pedro River, 1200m, 3 Jun 2004, coll. W. Moore	KU937643	KU937717
<i>B. costipennis</i> DNA2182	UAIC1000017	USA: AZ: Cochise Co., San Pedro River, 1200m, 3 Jun 2004, coll. W. Moore	KU937644	KU937718
<i>B. costipennis</i>	UAIC1012264	USA: AZ: Mohave Co., Burro Creek		NEONU723-11
<i>B. costipennis</i> DNA2274	UAIC1050075	USA: AZ: Pinal Co. 3 mi NE Winkelman, Gila River, 600m, 17 Mar 2011, coll. J. Schaller	KU937668	KU937744
<i>B. costipennis</i>		USA: CA: Los Angeles Co., Angeles National Forest		NEONU1838-13 NEONU1839-13
<i>B. costipennis</i>		USA: CA: Santa Barbara Co., Channel Islands National Park		NEONU1835-13 NEONU1836-13 NEONU1837-13
<i>B. crepitans</i>		CZECH REPUBLIC: Northern Bohemia: Rana u Loun, Obilik		KM450915 GBCOU1448-13
<i>B. crepitans</i>		GERMANY: Rhineland-Palatinate: Ahweiler, Sinzig, Kiesgrube Goldene Meile		FBCOA712-10
<i>B. crepitans</i>		GERMANY: Rhineland-Palatinate: Alzey-Worms, Gundersheim, Weinberstlage Hoellenbrand		FBCON015-13 GBCOG677-13
<i>B. crepitans</i>		GERMANY: Rhineland-Palatinate: Mayen-Koblenz, Plaidt, Gewerbegebiet		FBCOA944-10
<i>B. crepitans</i>		GERMANY: Rhineland-Palatinate: Sandgrube		GCOL3344-16 GCOL3345-16 GCOL3346-16 GCOL3347-16 GCOL3348-16
<i>B. crepitans</i>		GERMANY: Saxony-Anhalt, Schulmeisterberg s.ued. Timmenode		GCOL10013-16

<i>B. crepitans</i>		GERMANY: Saxony-Anhalt: Aseleben, Salziger See	FBCOJ789-13
<i>B. crepitans</i>		GERMANY: Saxony-Anhalt: Teufelsmauer bei Weddersleben	GCOL9804-16
<i>B. crepitans</i> DNA2206	UAIC1047973	GERMANY: Thuringia, Kullstedt, 7 May 2010	OP575872 KU937647 KU937721
<i>B. crepitans</i>		GERMANY: Thuringia: Rothenstein	GCOL1739-16
<i>B. crepitans</i>		GERMANY: Thuringia: Saxonyburg, Hainleite, Kammweg	GCOL3931-16 GCOL3932-16 GCOL3993-16
<i>B. crepitans</i>		SLOVAKIA: Specific locality not reported	JX412826
<i>B. crepitans</i>		SLOVENIA: Nova Gorica: Solkan, Sabotin	GBCOU3451-13 KM441050
<i>B. cyanipennis</i> DNA5214	UASM268773	CANADA: Ontario: Chaffey's Locks, 15 June 1985, coll. G.E. Ball	OP575853
<i>B. cyanipennis</i>		CANADA: Ontario: Hartington, Eel Lake Cottage,	MPCAN293-17 MPCAN294-17 MPCAN295-17
<i>B. cyanochroaticus</i>		USA: NC: Singetary Lake State Park, 21 May 2003, coll. H Cole	ICHC034-08
<i>B. cyanochroaticus</i>		USA: ND: Morton Co., Northern Great Plains Research Laboratory	BETN3212-19 BETN3330-19 BETN3331-19 BETN9268-20
<i>B. cyanochroaticus</i>		USA: ND: Stutsman Co., Chase Lake National Wildlife Refuge	BETN1736-18 BETN1747-18 BETN1755-18 BETN1778-18 BETN3266-19 BETN3267-19 BETN3268-19 BETN9110-20
<i>B. elongatulus</i> DNA5210	UASM373098	MEXICO: Sonora: Municipio de Fronteras, Rancho Capulin 23.5 km (by air) WSW Fronteras, Sierra Buenos Aires-Ajavispe	OP575854

Res., 1429m, 2 July 2016, T.R. Vandevender,
J.D. Palting

<i>B. elongatulus</i>	Specific locality not reported	KP419376		
<i>B. elongatulus</i> DNA2209	UAIC1000023 USA: AZ: Cochise Co. Chiricahua Mts., upper Turkey Creek, 2040m, 30-31 May 2010, coll. J. Schaller	KU937650	KU937722	
<i>B. elongatulus</i> DNA2210	UAIC1000024 USA: AZ: Cochise Co. Chiricahua Mts., upper Turkey Creek, 2040m, 30-31 May 2010, coll. J. Schaller	KU937651	KU937723	
<i>B. elongatulus</i>	UAIC1012364 UAIC1012365 USA: AZ: Cochise Co., Huachuca Mts., Parker Canyon		NEONU727-11 NEONU728-11	
<i>B. elongatulus</i>	USA: AZ: Cochise Co., Santa Rita Mts. Box Canyon, 23 July 1994, coll. Olson		NEONU746-11	
<i>B. elongatulus</i> DNA2278	UAIC1050512 USA: AZ: Maricopa Co., Lower Sycamore Creek, off Hwy, 720m, 28 Mar 2011, coll. J. Schaller	KU937672	KU937748	
<i>B. elongatulus</i> DNA2271	UAIC1050511 USA: AZ: Pinal Co., 3 mi NE Winkelman, Gila River, 600m, 17 Mar 2011, coll. J. Schaller	KU937665	KU937741	
<i>B. elongatulus</i> DNA2166	UAIC1000000 USA: AZ: Santa Cruz Co., Pajarito Mts., Sycamore Canyon, 1190m, 13 Mar 2010, coll. W.Moore, J. Schaller, R.L. Smith	KU937628	KU937704	
<i>B. elongatulus</i> DNA2167	UAIC1000001 USA: AZ: Santa Cruz Co., Pajarito Mts., Sycamore Canyon, 1190m, 13 Mar 2010, coll. W.Moore, J. Schaller, R.L. Smith	OP575875	KU937629	KU937705
<i>B. elongatulus</i> DNA2168	UAIC1000002 USA: AZ: Santa Cruz Co., Pajarito Mts., Sycamore Canyon, 1190m, 13 Mar 2010, coll. W.Moore, J. Schaller, R.L. Smith	OP575874	KU937630	
<i>B. elongatulus</i> DNA2169	UAIC1000003 USA: AZ: Santa Cruz Co., Pajarito Mts., Sycamore Canyon, 1190m, 13 Mar 2010, coll. W.Moore, J. Schaller, R.L. Smith	KU937631	KU937703	
<i>B. elongatulus</i> DNA2172	UAIC1000007 USA: AZ: Santa Cruz Co., Pajarito Mts., Sycamore Canyon, 1190m, 13 Mar 2010, coll. W.Moore, J. Schaller, R.L. Smith	KU937634	KU937708	

<i>B. elongatulus</i> DNA2173	UAIC1000008	USA: AZ: Santa Cruz Co., Pajarito Mts., Sycamore Canyon, 1190m, 13 Mar 2010, coll. W.Moore, J. Schaller, R.L. Smith	KU937635	KU937709
<i>B. elongatulus</i> DNA2174	UAIC1000009	USA: AZ: Santa Cruz Co., Pajarito Mts., Sycamore Canyon, 1190m, 13 Mar 2010, coll. W.Moore, J. Schaller, R.L. Smith	KU937636	KU937710
<i>B. elongatulus</i> DNA2226	UAIC1000029	USA: AZ: Santa Cruz Co., Pajarito Mts., Sycamore Canyon, 1190m, 13 Mar 2010, coll. W.Moore, J. Schaller, R.L. Smith	OP575873	KU937656
<i>B. elongatulus</i> DNA2227	UAIC1000030	USA: AZ: Santa Cruz Co., Pajarito Mts., Sycamore Canyon, 1190m, 13 Mar 2010, coll. W.Moore, J. Schaller, R.L. Smith	KU937657	KU937729
<i>B. elongatulus</i>	UAIC1012309	USA: AZ: Santa Cruz Co., Rock Corral Canyon Tumacacori Mts. USA: OK: Marshall Co., Oklahoma University Biological Station		NEONU726-11
<i>B. elongatulus</i>		USA: TX: Comal Co., Bulverde, 20km NNE San Antonio		OUEINT091-09
<i>B. elongatulus</i>		USA: TX: Palo Duro Canyon State Park		USCOL191-09
				USCOL192-09
				USCOL193-09
				USCOL194-09
				BBCCA515-12
				BBCCA516-12
				BBCCA518-12
				BBCCA519-12
				BBCCA520-12
				BBCCA526-12
				BBCCA527-12
				BBCCA3465-12
<i>B. elongatulus</i>		USA: TX: Sutton Co., Sonora Caverns, 15 km W of Sonora, 680m, 22-23 May 2009, coll. K. Perez, S. McCubbin, J. Cossey, A. Borisenko		USCOL195-09
				USCOL196-09
				USCOL197-09
<i>B. explodens</i>		GERMANY: Baden-Wuerttemberg: Ihringen, Winklerberg, 250m, 25 Aug 2013, coll. GBOL-Team ZFMK		GCOL7759-16
				GCOL7760-16

<i>B. explodens</i>		GERMANY: Baden -Wuerttemberg: Vogtsburg-Altvoigtsburg, Haselschacher Buck		FBCOK014-13
<i>B. explodens</i>		GERMANY: Rhineland-Palatinate: Bad Duerkheim, Freinsheim, Sastanenhain Im Hahnen		GBCOF186-13
<i>B. explodens</i>		GERMANY: Rhineland-Palatinate: Gundersheim, Gemmersheim, Jockgrim, Sandmagerrasen		KM442145 KM446858 FBCOP901-13 FBCOP902-13 GBCOL768-12 GBCOL769-12
<i>B. explodens</i>		GERMANY: Rhineland-Palatinate: Gundersheim, Weinbergslage Hoellenbrand		FBCON055-13 GBCOG712-13 GBCOG713-13
<i>B. explodens</i>		GERMANY: Saxony-Anhalt: Halberstadt, Lkr. Harz, westl. Athenstedt		GCOL9273-16
<i>B. explodens</i>		GERMANY: Thuringia: Bad Blankenburg, Boehlscheiben		GCOL4117-16
<i>B. explodens</i>		GERMANY: Thuringia: Jena, Cospoth		GCOL6034-16
<i>B. explodens</i>		GERMANY: Thuringia: Oberheldungen, Acker noerdlich		GCOL6041-16
<i>B. explodens</i>		SLOVENIA: Gorenjska: Poljane Sora Valley, Hotavlje		FBCOK533-13
<i>B. explodens</i>		SLOVENIA: Nova Gorica, Osek, Vogrseck		GBCOU3439-13
<i>B. explodens</i>		SLOVENIA: Severnoprimska: Solkan, Sabotin		GCOL7761-16 GCOL7762-16
<i>B. favicollis</i> DNA2279	UAIC1050056	USA: AZ: Maricopa Co., Lower Sycamore Creek, off Hwy, 720m 28 Mar 2011, coll. J. Schaller		KU937673 KU937749
<i>B. favicollis</i> DNA2207	UAIC1000021	USA: AZ: Yavapai Co., T18N, R6W sec. 25, Walnut Creek, 8 Jul 2004, coll. R. Delph		OP575876 KU937648
<i>B. favicollis</i> DNA2208	UAIC1000022	USA: AZ: Yavapai Co., T18N, R6W sec. 25, Walnut Creek, 8 Jul 2004, coll. R. Delph		OP575878 KU937649

<i>B. favicollis</i> DNA22172	UAIC1050055	USA: AZ: Pinal Co., 3 mi NE Winkelman, Gila River, 600m, 17 Mar 2011, coll. J. Schaller	OP575877	KU937666	KU937742
<i>B. favicollis</i>		USA: CA: Los Angeles Co., Angeles National Forest: SDEF			NEONU1832-13 NEONU1834-13
<i>B. favicollis</i>		USA: CA: Santa Barbara Co., Los Padres National Forest: Oso Canyon			NEONU1833-13
<i>B. fulminatus</i> DNA2264		USA: MA: Harvard Forest Site, 340m, 5 July 2010, coll. NEON	OP575879	KU937662	KU937738 NEONT400-10
<i>B. fumans</i> DNA2289	UAIC1047987	MEXICO: Sonora, La Colorada, E side of Tecoripa, 410m, 22 Sep 2011, coll. T.R. VanDevender, A.L. Reina-G.	OP575882	KU937677	KU937753
<i>B. fumans</i> DNA2290	UAIC1047988	MEXICO: Sonora, Municipio de Carbo, El Oasis on MEX 15, 7.9km W Carbo, 550m, 16 Oct 2011, coll. T.R. VanDevender.	OP575881	KU937678	KU937754
<i>B. fumans</i> DNA5209	UASM370731	MEXICO: Sonora, Municipio de Agua Prieta, 8 Aug 2015, coll. T.R. Van Devender, A.L. Reina-G	OP575880		OP575855
<i>B. fumans</i>		USA: MD: Anne Arundel Co., Smithsonian Environmental Research Center			BETN4788-19 BETN7863-20 BETN7867-20 BETN7868-20
<i>B. fumans</i>		USA: NM: Otero Co., White Sands National Monument			NEONU1127-12 NEONU1128-12
<i>B. fumans</i>		USA: VA: Clarke Co., Blandy Experimental Farm			BETN1369-18 BETN5015-19 BETN7864-20 BETN7865-20
<i>B. fumans</i>		USA: VA: Warren Co., Smithsonian Conservation Biology Institute			BETN4852-19 BETN4853-19 BETN7866-20 BETN7869-20 BETN7870-20
<i>B. galactoderus</i> DNA5216	UASM367811	MEXICO: Guerrero: 66.6km N Acapulco, 20 Dec 1965, coll. G.E. Ball, D.R. Whitehead			OP575856

<i>B. galactoderus</i> DNA5217	UASM367812	MEXICO: Sinaloa: Rio Panuco, 18.0km NE Concordia on Rte 40, 12 Jan 1966, coll. D.R. Whitehead		OP575857
<i>B. gebhardis</i> DNA5211	UASM370729	MEXICO: Sonora: Pilares de Nacoazari, 8 Aug 2015, coll. D. Shpeley	OP575885	OP575858
<i>B. gebhardis</i> DNA2253	UAIC1050005	USA: AZ: Pima Co., Tanque Verde Creek, trail off Reddington Rd., 860m, 27 May 2010, coll. J. Schaller	OP575883	KU937734
<i>B. gebhardis</i> DNA2254	UAIC1050006	USA: AZ: Catalina Mountains, 2013, coll. J. Eyle.		2254
<i>B. gebhardis</i> DNA2280	UAIC1050007	USA: AZ: Maricopa Co. Lower Sycamore Creek, off Hwy. 87, 720m 28 Mar 2011, coll. J. Schaller	OP575884	KU937674 KU937750
<i>B. gebhardis</i>		USA: CA: Los Angeles Co., Angeles National Forest: Ruby Canyon		NEONU1829-13
<i>B. gebhardis</i>		USA: CA: Santa Barbara Co., Channel Islands National Park: Santa Rosa Island		NEONU1827-13 NEONU1828-13
<i>B. gebhardis</i>		USA: CA: Santa Barbara Co., Los Padres National Forest: Birbent Canyon		NEONU1831-13
<i>B. gebhardis</i>		USA: CA: Santa Barbara Co., UC Sedgwick Reserve		NEONU1830-13
<i>B. geniculatus</i> DNA2300		PANAMA: Rio Manoni, 1 Sep 2006	OP575886	KU937683 KU937759
<i>B. hirsutus</i>		Specific locality not reported	AF398693	
<i>B. hirsutus</i> DNA2179	UAIC1000014	USA: AZ: Cochise Co., San Pedro River, Charleston Bridge, 1200m, 23 Feb 2010, coll. W. Moore, D. and J. Maddison	OP575889	KU937641 KU937715
<i>B. hirsutus</i>	UAIC1012751	USA: AZ: Graham Co., Bonita Creek		NEONU752-11
<i>B. hirsutus</i> DNA2273	UAIC1050158	USA: AZ: Pinal Co. 3 mi NE Winkelman, Gila River, 600m, 17 Mar 2011, coll. J. Schaller	OP575887	KU937667 KU937743
<i>B. hirsutus</i> DNA2275	UAIC1050159	USA: AZ: Maricopa Co. Lower Sycamore Creek, 720m 28 Mar 2011, coll. J. Schaller	OP575888	KU937669 KU937745

<i>B. hirsutus</i> DNA2262	UAIC1050162	USA: AZ: Santa Cruz Co. Atascosa Mts. Pena Blanca Lake, 1170m, 7 Nov 2010 J. Schaller	OP575890	KU937736
<i>B. hirsutus</i>	UAIC1012764 UAIC1012866	USA: AZ: Mohave Co., 6 mi W of signal Big Sandy River		NEONU753-11 NEONU755-11
<i>B. hirsutus</i>	UAIC1012765	USA: AZ: Mohave Co., 6.9 mi NE of Nothing		NEONU754-11
<i>B. hirsutus</i> DNA2180	UAIC1000015	USA: AZ: Santa Cruz Co., Pajarito Mts., Sycamore Canyon, 1190m, 13 Mar 2010, coll. W. Moore, J. Schaller, R.L. Smith		KU937642 KU937716
<i>B. hirsutus</i>		USA: AZ: Yavapai Co., Willow Creek Reservoir, 3 km NE Prescott		USCOL188-09
<i>B. imperialis</i>		USA: KS: Douglas Co., KU Field Station		BETN337-18 BETN338-18
<i>B. imperialis</i>		USA: KS: Jefferson Co., KU Field Station		BETN8592-20 BETN8609-20
<i>B. imperialis</i>		USA: KS: Jefferson Co., KU Field Station		BETN8592-20 BETN8609-20
<i>B. imparcitis</i> DNA2277	UAIC1050025	USA: AZ, Maricopa Co. Lower Sycamore Creek, 720m, 28 Mar 2011, coll. J. Schaller	OP575891	KU937671 KU937747
<i>B. janthinipennis</i>		CANADA: Ontario: Rouge National Urban Park		RBINA5443-13
<i>B. janthinipennis</i> DNA5229		USA: KS: Sedgwick Co., Ninescaw Biological Reserve, 2 Sep 2017, coll. E. Waite	OP575893	OP575860
<i>B. janthinipennis</i> DNA5205	UASM268815	USA: MA: Nantucket Co., Nantucket Island, Sesachacha Pond, 3 Sep 1995, coll. F. Purington	OP575892	OP575859
<i>B. janthinipennis</i> DNA2323		USA: OK: Custer Co. Foss State Park, Sandy Beach, 06 Oct 2012, coll. G.F. Hevel	OP575894	KU937691 KU937767
<i>B. javahinopsis</i> DNA2287	UAIC1003101	USA: AZ: Cochise Co., San Pedro River near Hwy. 82, 1180 m, 1 Jun 2011, coll. J. Schaller		KU937675 KU937751
<i>B. javahinopsis</i>	UAIC1012877	USA: AZ: Cochise Co., Texas Canyon L. Dragoon Mts.		NEONU758-11
<i>B. javahinopsis</i>		USA: NM: Otero Co., White Sands National Monument		NEONU1129-12 NEONU1130-12

				NEONU1131-12
				NEONU1132-12
<i>B. kavanaughi</i>		USA: AZ: Yavapai Co., Willow Creek Reservoir, 3 km NE Prescott		USCOL189-09 USCOL190-09
<i>B. kavanaughi</i>		USA: CA: Point Mugu State Park		BBCCA521-12
<i>B. kavanaughi</i>	UAIC1012886	USA: TX: Blanco Co., Federnales Falls State Park		NEONU736-11
<i>B. lateralis</i> DNA2183	UAIC1000018	USA: AZ, Santa Cruz Co., Patagonia Lake State Park, 1150m, 6 Jun 2004, coll. J.C. Oliver and K.L. Prudic	OP575895	KU937645 KU937719
<i>B. lateralis</i> DNA2270	UAIC1047998	USA: AZ, Pinal Co.: 3 mi NE Winkelman, Gila River, 600m, 17 Mar 2011, coll. J. Schaller	OP575896	KU937664 KU937740
<i>B. lateralis</i> DNA2261	UAIC1047999	USA: AZ: Santa Cruz Co. Atascosa Mts. Pena Blanca Lake, 1170m, 7 Nov 2010 J. Schaller	OP575897	KU937735
<i>B. medius</i>		USA: FL: Sarasota Co., Myakka River State Park		BBCCA535-12
<i>B. medius</i>		USA: ND: Morton Co., Northern Great Plains Research Laboratory		BETN1810-18 BETN9260-20
<i>B. medius</i>		USA: ND: Stutsman Co., Chase Lake National Wildlife Refuge		BETN1837-18 BETN9117-20 BETN9121-20
<i>B. medius</i>		USA: TX: Palo Duro Canyon State Park		BBCCA533-12 BBCCA534-12
<i>B. mexicanus</i> DNA2178	UAIC1000013	USA: AZ: Cochise Co., San Pedro River, Charleston Bridge, 1200m, 23 Feb 2010, coll. W. Moore, D. and J. Maddison		KU937640 KU937714
<i>B. mexicanus</i> DNA2276	UAIC1050347	USA: AZ: Maricopa Co., Lower Sycamore Creek, off Hwy, 720m, 28 Mar 2011, coll. J. Schaller		KU937670 KU937746
<i>B. mexicanus</i> DNA2269	UAIC1050348	USA: AZ: Gila Co., 3 mi NE Winkelman, Gila River, 600m, 17 Mar 2011, coll. J. Schaller	OP575899	KU937663 KU937739

<i>B. mexicanus</i>	UAIC1011761 UAIC1012916	USA: AZ: Pinal Co., Buehman Creek near Reddington			NEONU741-11 NEONU742-11
<i>B. mexicanus</i> DNA2263	UAIC1050350	USA: AZ: Santa Cruz Co., Atascosa Mts. Pena Blanca Lake, 1170m, 7 Nov 2010 J. Schaller	OP575900		KU937737
<i>B. mexicanus</i> DNA2170	UAIC1000004	USA: AZ: Santa Cruz Co., Pajarito Mts., Sycamore Canyon, 1190m, 13 Mar 2010, coll. W. Moore, J. Schaller, R.L. Smith		KU937632	KU937706
<i>B. mexicanus</i> DNA2171	UAIC1000005	USA: AZ: Santa Cruz Co., Pajarito Mts., Sycamore Canyon, 1190m, 13 Mar 2010, coll. W. Moore, J. Schaller, R.L. Smith		KU937633	KU937707
<i>B. mexicanus</i> DNA2177	UAIC1000012	USA: AZ: Santa Cruz Co., Pajarito Mts., Sycamore Canyon, 1190m, 13 Mar 2010, coll. W. Moore, J. Schaller, R.L. Smith		KU937639	KU937713
<i>B. mexicanus</i> DNA2223	UAIC1000026	USA: AZ: Santa Cruz Co., Pajarito Mts., Sycamore Canyon, 1190m, 13 Mar 2010, coll. W. Moore, J. Schaller, R.L. Smith	OP575902	KU937653	KU937725
<i>B. mexicanus</i> DNA2224	UAIC1000027	USA: AZ: Santa Cruz Co., Pajarito Mts., Sycamore Canyon, 1190m, 13 Mar 2010, coll. W. Moore, J. Schaller, R.L. Smith	OP575898	KU937654	KU937726
<i>B. mexicanus</i> DNA2225	UAIC1000028	USA: AZ: Santa Cruz Co., Pajarito Mts., Sycamore Canyon, 1190m, 13 Mar 2010, coll. W. Moore, J. Schaller, R.L. Smith	OP575901	KU937655	KU937727
<i>B. mexicanus</i> DNA2205	UAIC1000019	USA: AZ: Yavapai Co., T18N, R6W sec. 25, Walnut Creek, 8 Jul 2004, coll. R. Delph	OP575903	KU937646	
<i>B. neglectus</i> DNA2316		USA: SC: Hampton Co., 7km WSW Garnett, Webb Wildlife Mgt. Area, Bluff Lake, 19m, 7 Apr 2006, coll. R. Androw, K. Karns	OP575904	KU937687	KU937763
<i>B. ovipennis</i> DNA5230		USA: PA: Lehigh Co., Trexler Nature Preserve, 20 Nov 2017, coll. E. Waite	OP575905		OP575861
<i>B. ovipennis</i> DNA2222	UAIC1047981	USA: VT: Chittenden Co., Colechester, Delta Park, 30m, 15 Jun 2010, coll. W. Moore		KU937652	KU937724
<i>B. pallidus</i> DNA2299		USA: CA: Yolo Co. Rd. 57, Cache Creek, 130m	OP575906	KU937680	KU937758
<i>B. perplexus</i>		USA: AL: Greene Co., Dead Lake			BETN715-18

<i>B. perplexus</i>		USA: CO: Kiowa Co., Off Colorado Road 54			NEONU005-11
<i>B. phaeocerus</i> DNA2175	UAIC1000010	USA: AZ: Cochise Co., San Pedro River, Charleston Bridge, 1200m, 23 Feb 2010, coll. W. Moore, D. and J. Maddison	OP575909	KU937637	KU937711
<i>B. phaeocerus</i> DNA2176	UAIC1000011	USA: AZ: Cochise Co., San Pedro River near Hwy 82, 1180m, 1 June 2011, coll. J. Schaller	OP575910	KU937638	KU937712
<i>B. phaeocerus</i> DNA2321		USA: CO: Kiowa Co., Off Colorado Road 54			NEONU021-11
<i>B. phaeocerus</i> DNA2322		USA: OK: Washita Co., Rocky, Rocky Lake, 7 Oct 2012, coll. G.F. Hevel	OP575908	KU937689	KU937765
<i>B. phaeocerus</i> DNA2322		USA: OK: Washita Co., Rocky, Rocky Lake, 7 Oct 2012, coll. G.F. Hevel	OP575907	KU937690	KU937766
<i>B. quadr-ipennis</i> DNA2336	UAIC1047978	USA: FL: Columbia Co. Osceola NF, 40m, 18 Aug 2012, coll. P. Goring, L. Davis	OP575911	KU937694	KU937770
<i>B. quadr-ipennis</i> DNA2337	UAIC1047977	USA: FL: Columbia Co. Osceola NF, 40m, 18 Aug 2012, coll. P. Goring, L. Davis	OP575912	KU937695	KU937702
<i>B. quadr-ipennis</i> DNA5212	UASM268747	USA: FL: Highlands Co., Archbold Biological Station, 20 Apr 2002, coll. V. Golta			OP575862
<i>B. quadr-ipennis</i>		USA: FL: Highlands Co., Archbold Biological Station			BBCCA509-12
<i>B. quadr-ipennis</i>		USA: FL: Kissimmee Prairie Preserve SP			BBCCA511-12
<i>B. quadr-ipennis</i>		USA: FL: Kissimmee Prairie Preserve SP, Hammock Trail			BBCCA513-12 BBCCA514-12
<i>B. quadr-ipennis</i>		USA: FL: Sarasota Co., Myakka River State Park			BBCCA507-12 BBCCA517-12
<i>B. quadr-ipennis</i>		USA: GA: Savannah Co.			BBCCA512-12
<i>B. sclopetea</i>		PORTUGAL: Braganca: Mirandela, Romeu			OSOIL003-16
<i>B. scopleta</i> DNA2320		ITALY: Sicily, Palermo Prov., Piano Battaglia, Parc Regione delle Madonie, 1560m, 11 May 2011, D. Brzoska		KU937688	KU937764
<i>B. sublaevis</i> DNA2356		USA: AR: Garland Co., FS Camp Clearfork, 20 Jun 2009, coll. B. Baldwin	OP575913		KU937700

<i>B. tenuicollis</i>	USA: AK: Toad Suck Park	BBCCA501-12
<i>B. (Brachynolomus)</i> sp. J DNA2339	UAIC1047975 ITALY: Lazio: Acropoli di Tarquinia (vr), 10 Mar 2013, coll. M. Bologna	KU937697
<i>B. (Brachynolomus)</i> sp. K DNA2340	UAIC1047976 ITALY: Lazio: Acropoli di Tarquinia (vr), 10 Mar 2013, coll. M. Bologna	KU937698
<i>B. (Metabrachinus)</i> sp. A DNA2292	UAIC1047966 TANZANIA: Morogoro, Mvomelo District, Milama, 13 Nov. 2011, coll. K. Angelus	KU937679 KU937755
<i>B. (Metabrachinus)</i> sp. B DNA2294	UAIC1047967 TANZANIA: Morogoro, Mvomelo District, Milama, 13 Nov. 2011, coll. K. Angelus	OP575863 KU937681 KU937756
<i>B. (Metabrachinus)</i> sp. D DNA2234	UAIC1047964 SOUTH AFRICA: Limpopo, Waterberg Mts., 1490m, 5 Dec 2003, coll. W. Moore	OP575864 KU937661 KU937733
<i>B. (Metabrachinus)</i> sp. D DNA2233	UAIC1047963 SOUTH AFRICA: Mpumalanga, Berlin Forest, 920m, 14 Dec 2003, coll. W. Moore	OP575865 KU937660 KU937732
<i>B. (Neobrachinus)</i> sp. C DNA2303	Central Department Capiata, 7 Dec 2005, coll. K. Will	KU937684 KU937760
<i>B. (Neobrachinus)</i> sp. E DNA2318	Region 9, Karanambu Lodge, 14- 17 Sep 2012, 100m, coll. D. Brzoska	KU937701