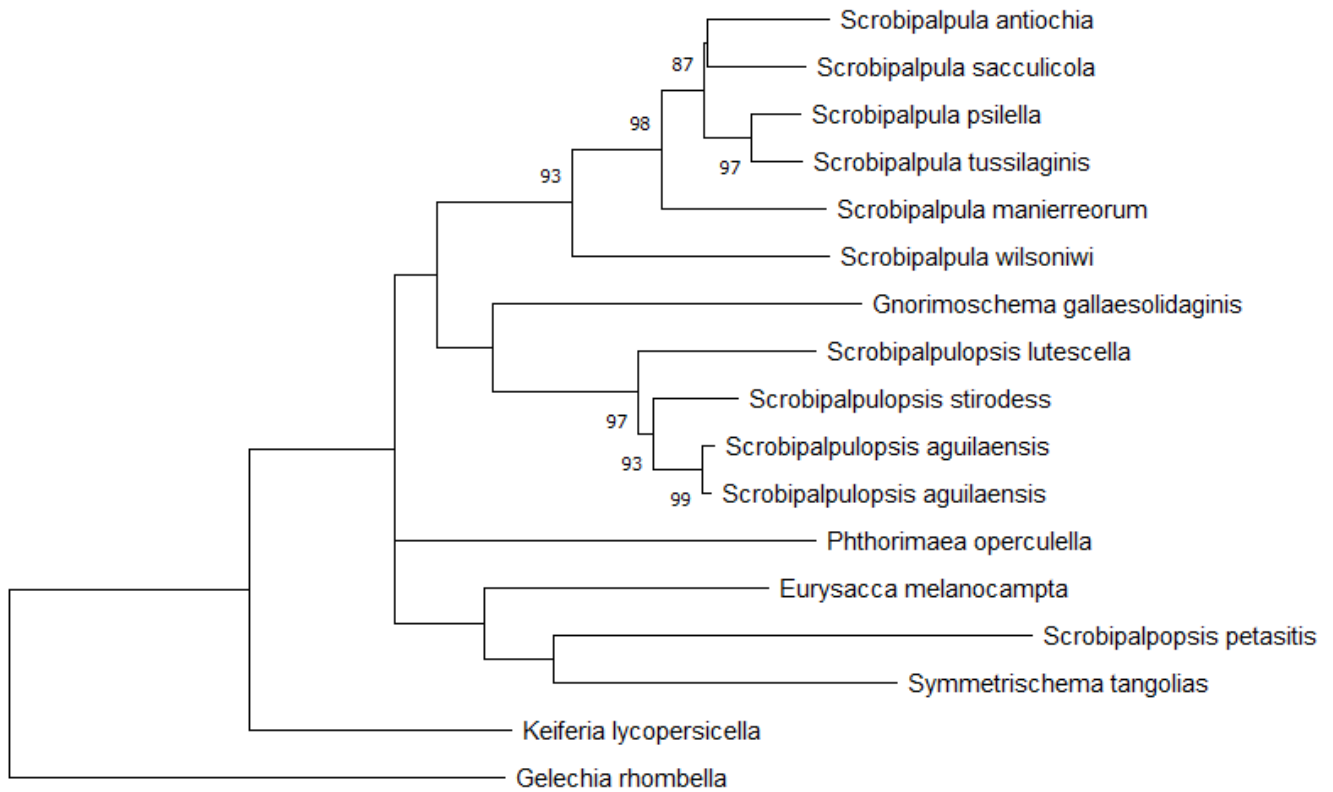


Strict consensus of two most parsimonious trees (453 steps) of *Scrobipalpulopsis aguilaensis* sp. nov. and representatives of Gnorimoschemini based on mitochondrial DNA sequences. Bootstrap values ≥ 50 are shown.



0.050

Maximum likelihood tree of *Scrobipalpus aguilaensis* sp. nov. and representatives of Gnorimoschemini based on mitochondrial DNA sequences. Bootstrap values >85 are shown.