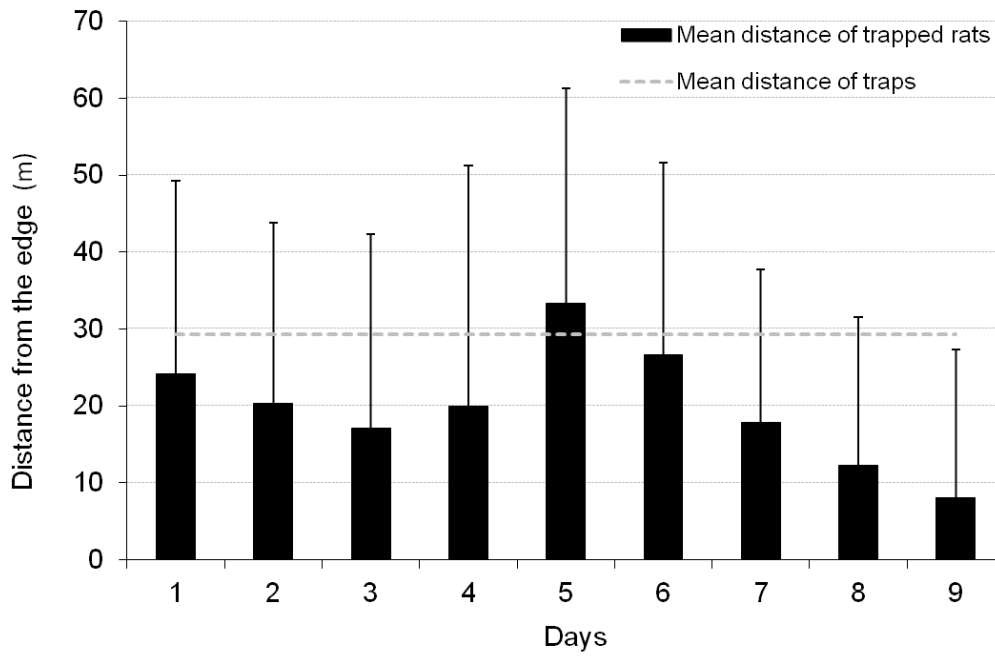
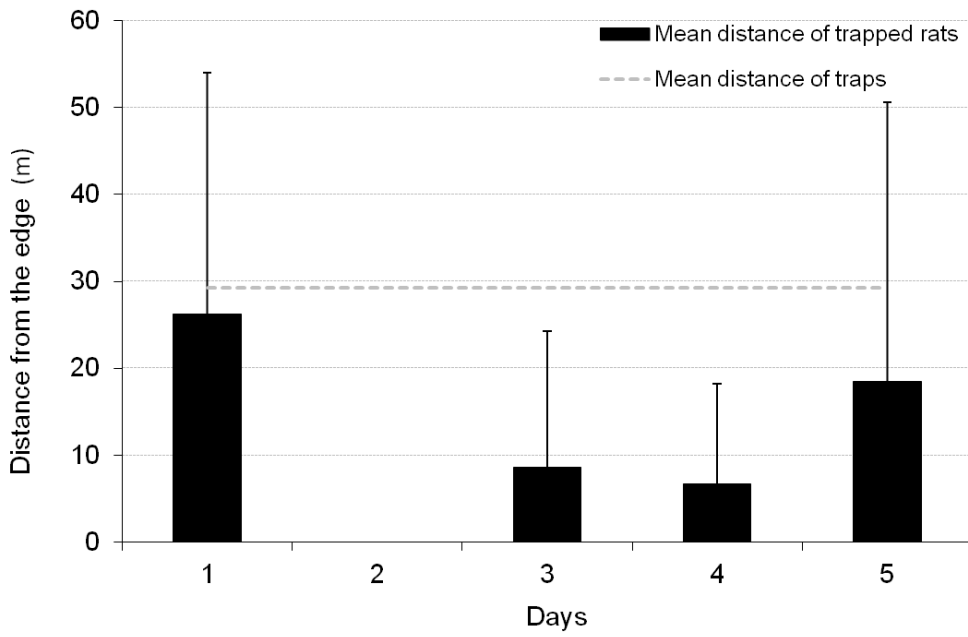


Supplementary material 3 Mean distances (\pm SE) of trapped rats from the edge of the removal area during the four trapping sessions. The grey dotted line represents the mean distance of the 209 traps to the edge of control area. When histogram bars are under the grey line, rats were captured closer to the edge compared to a scenario where rat captures would be evenly distributed across the grid.

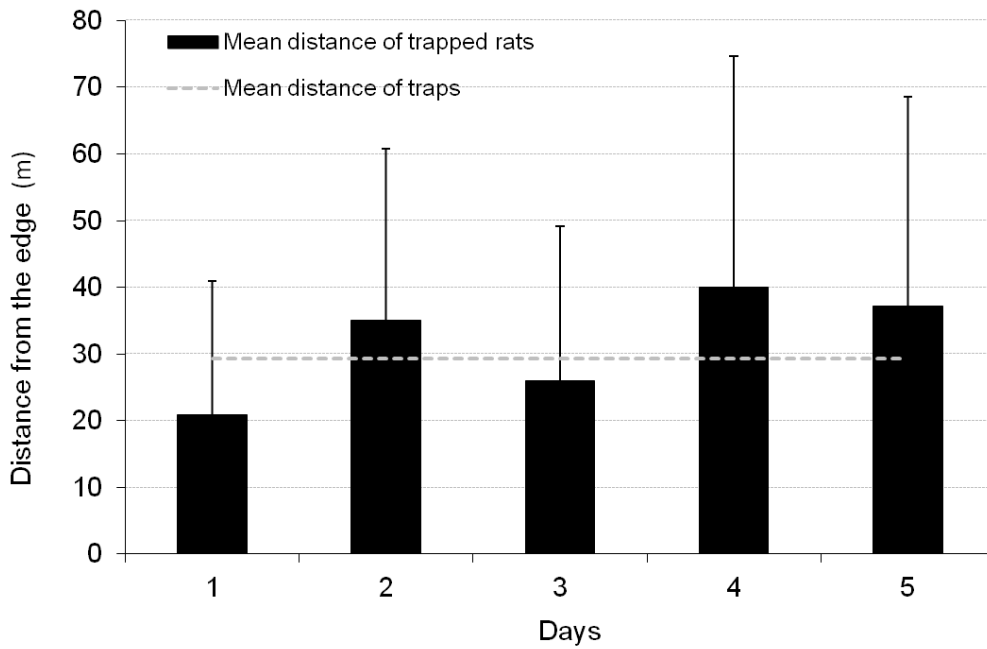
A) May 2015



B) July 2015



C) September 2015



D) November 2015

