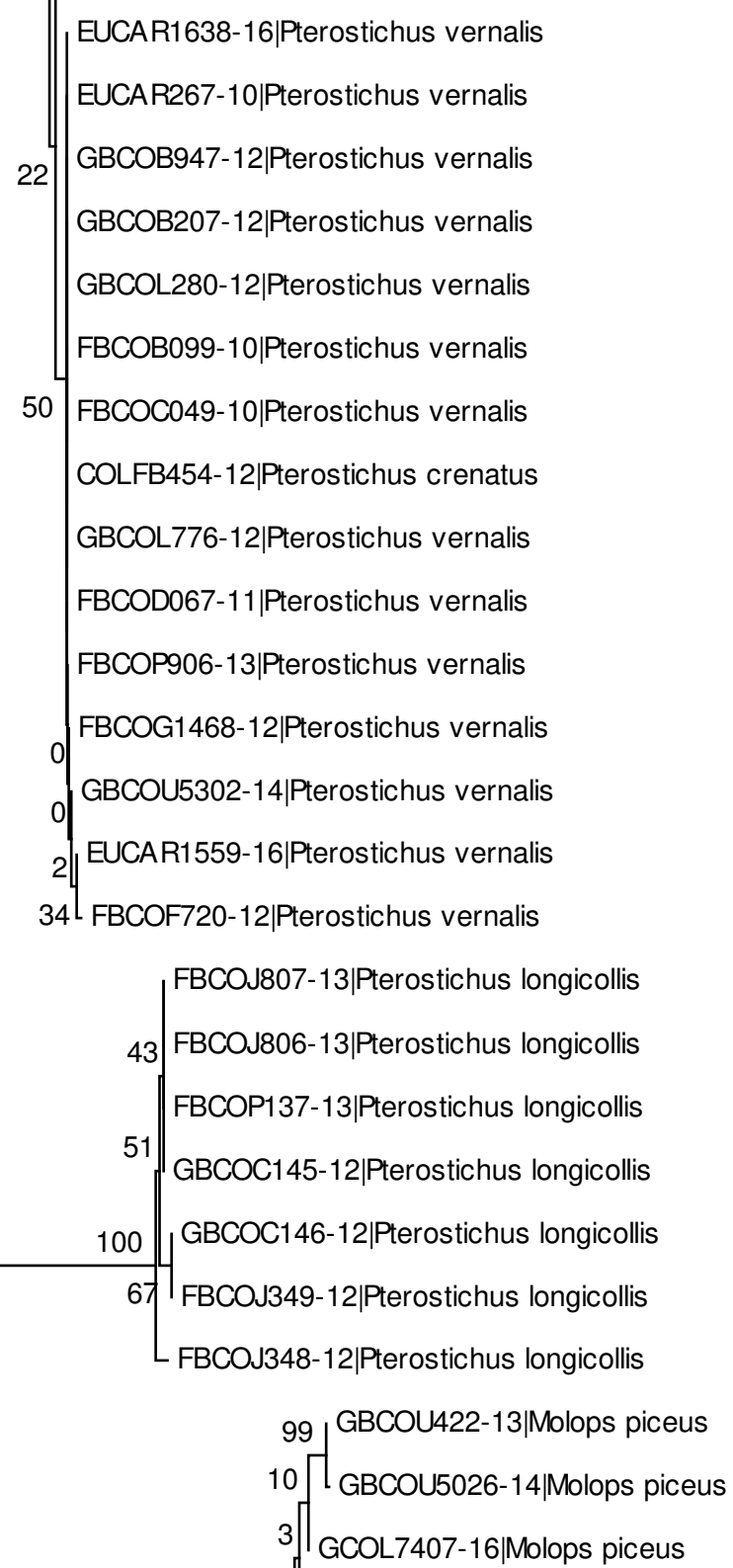
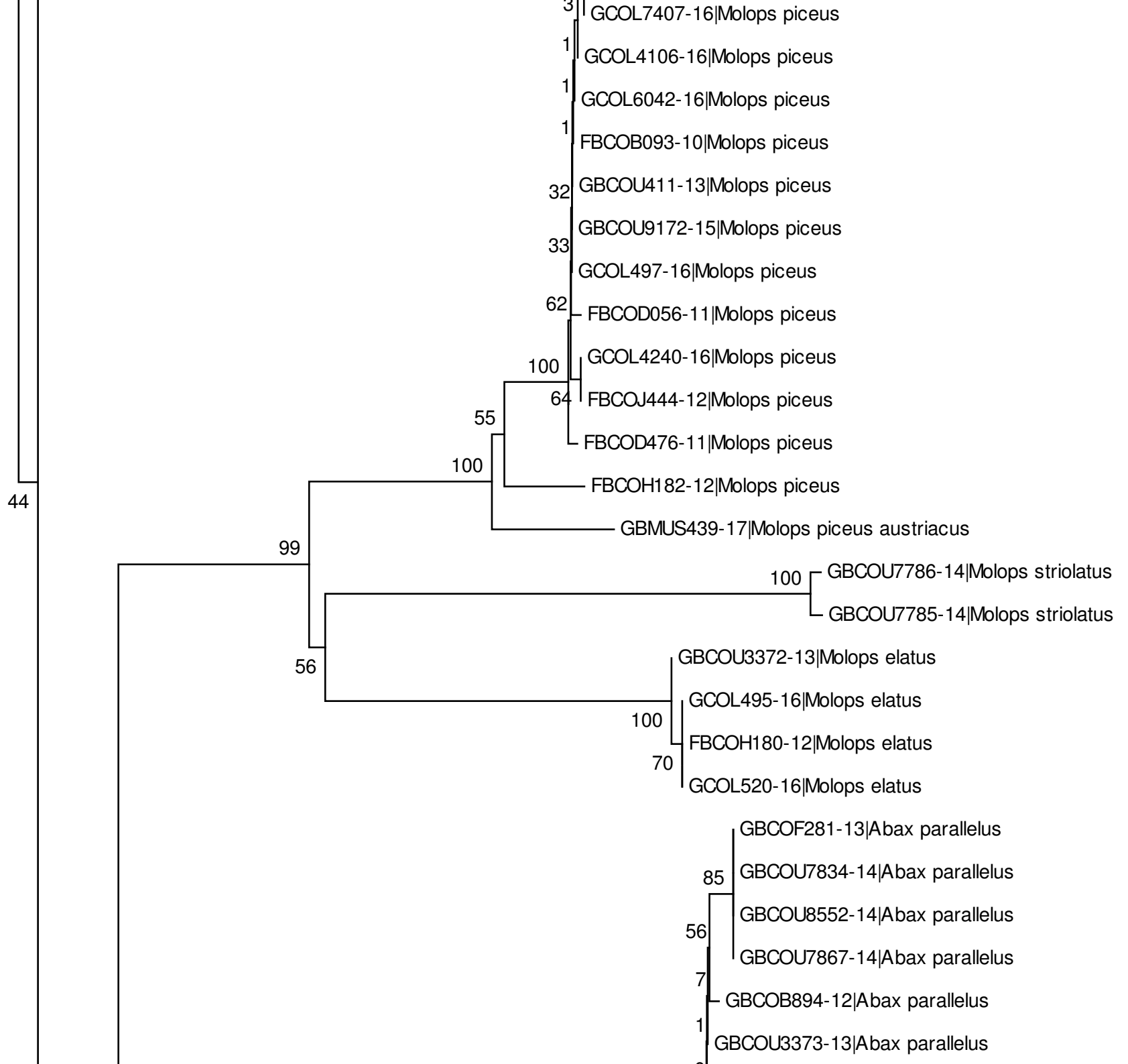
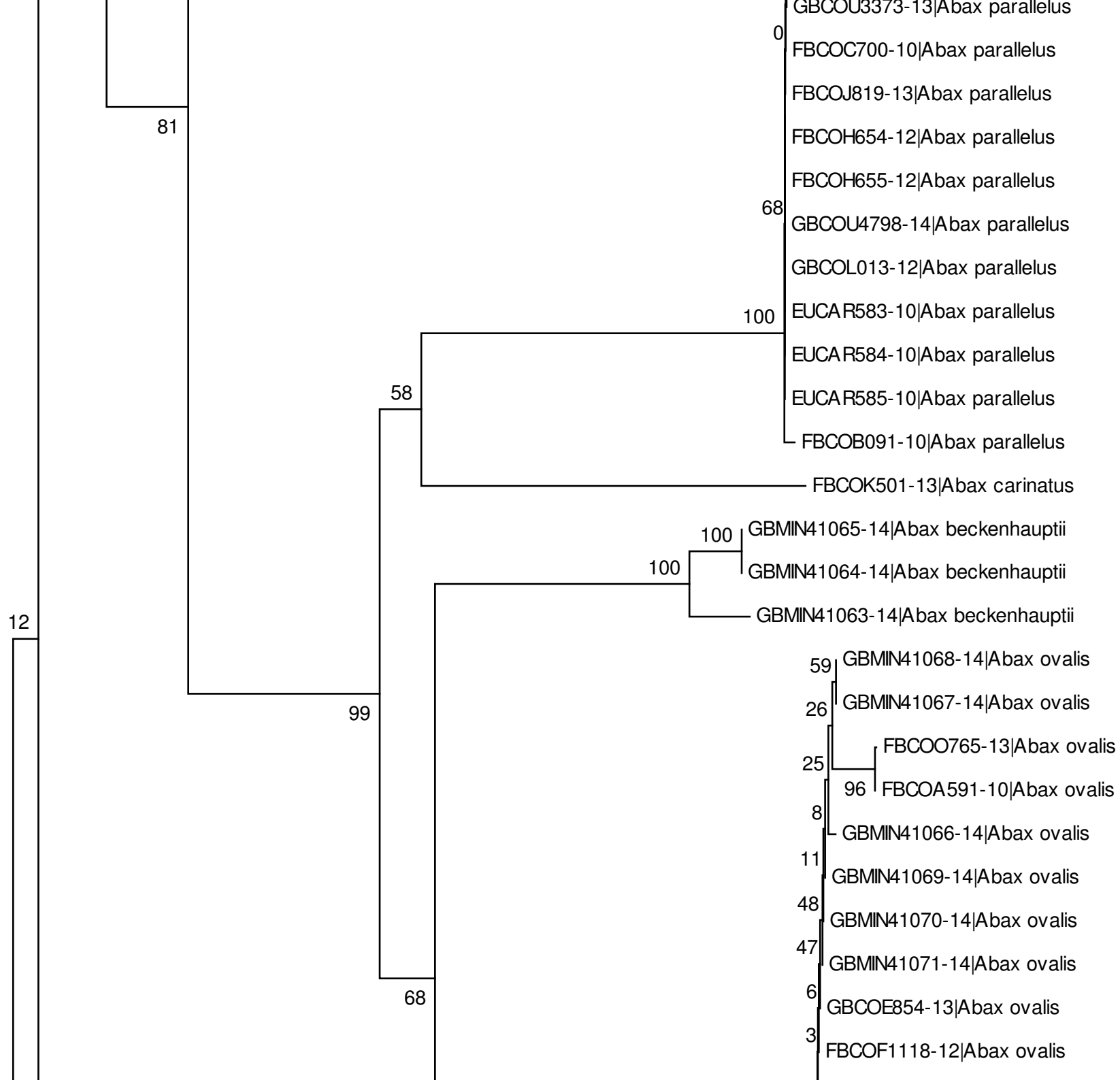
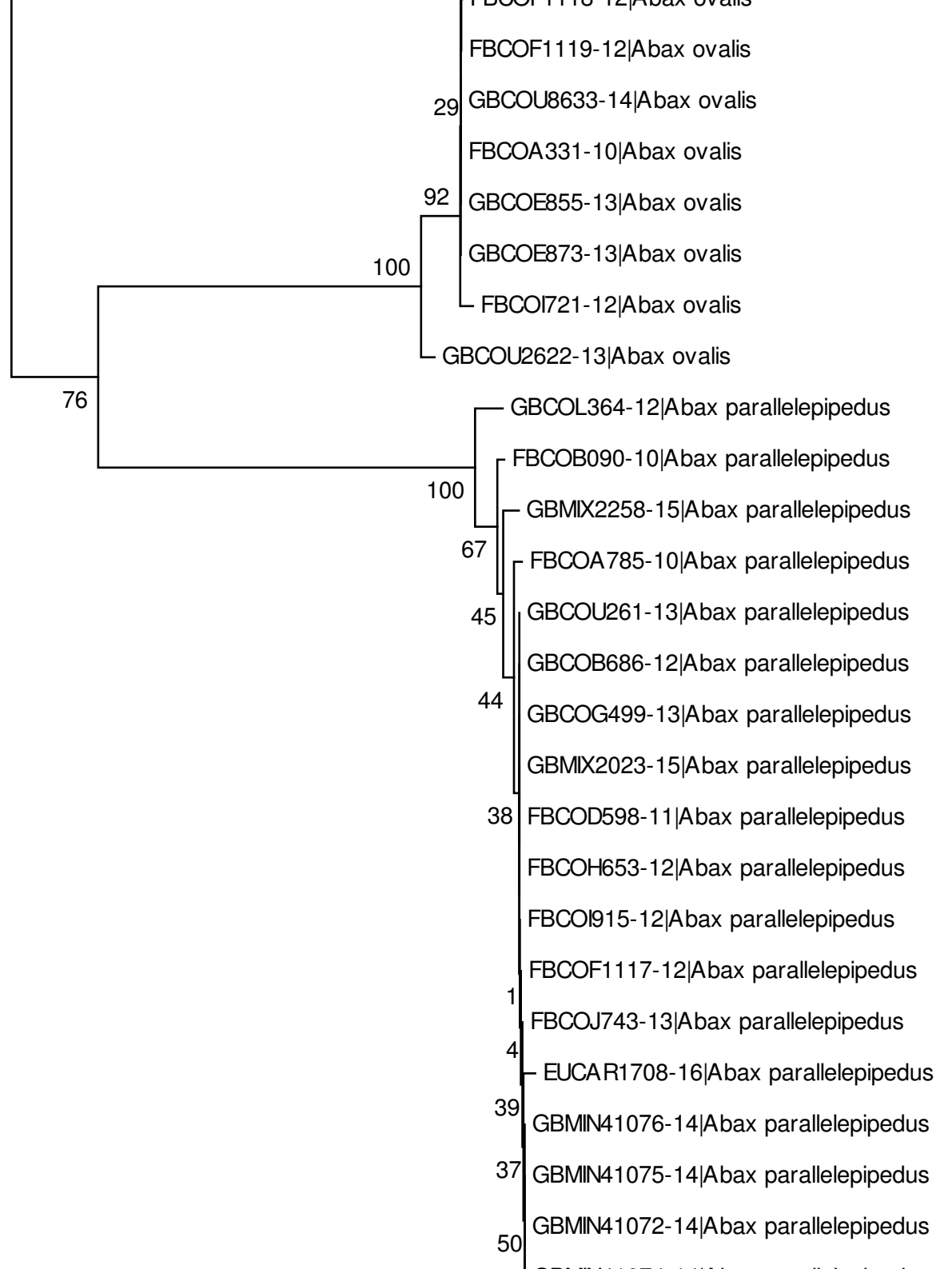


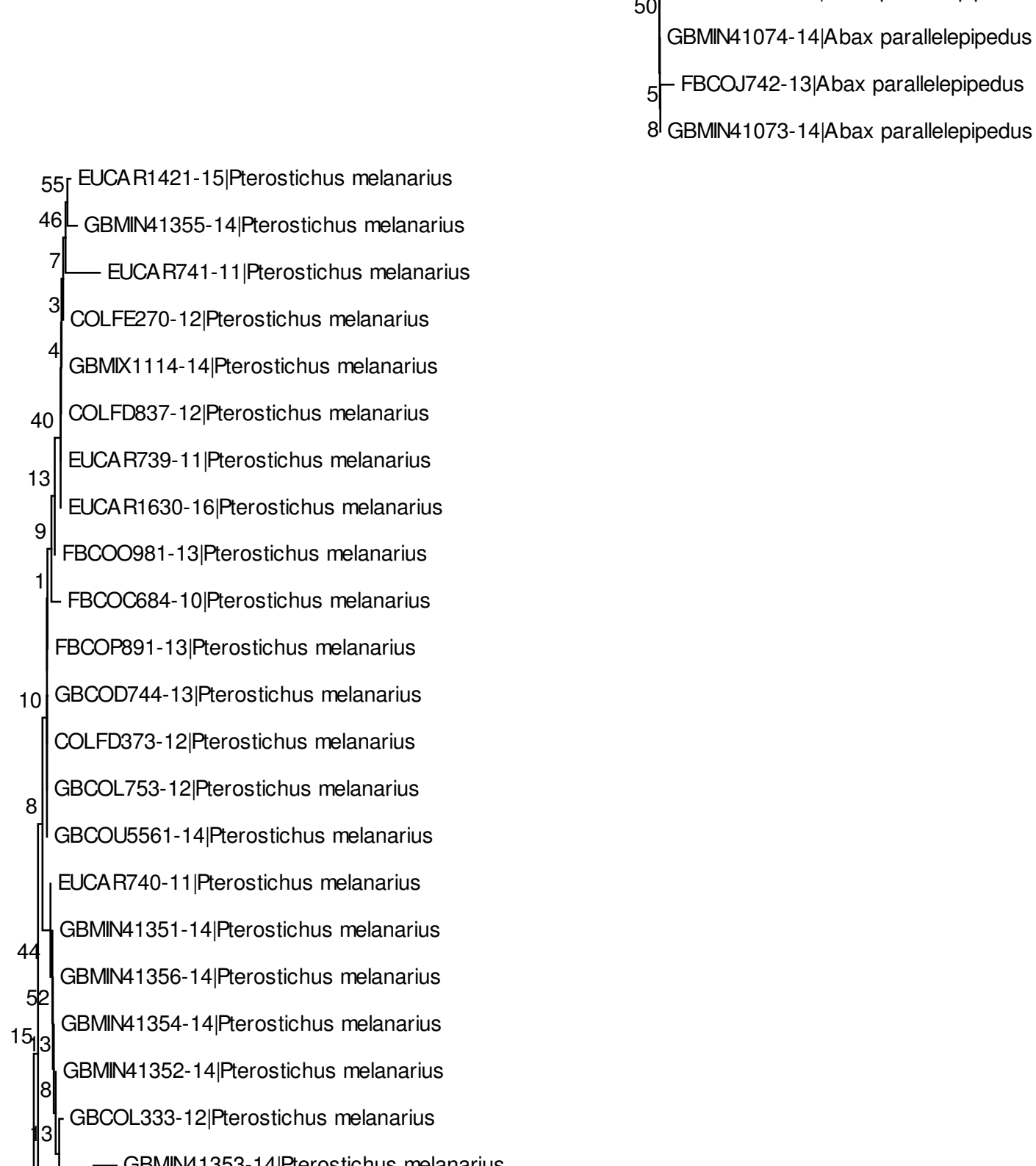
15



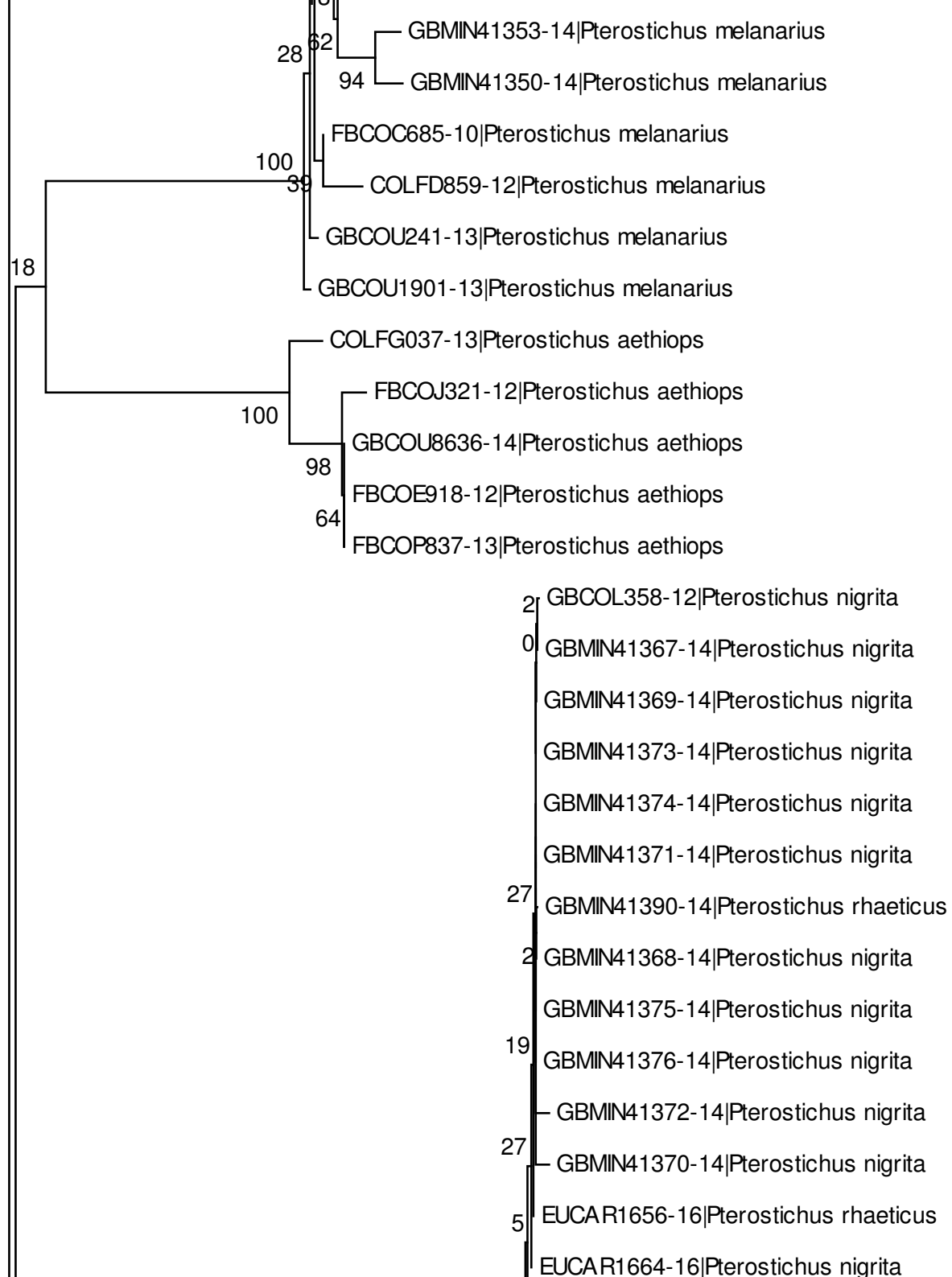


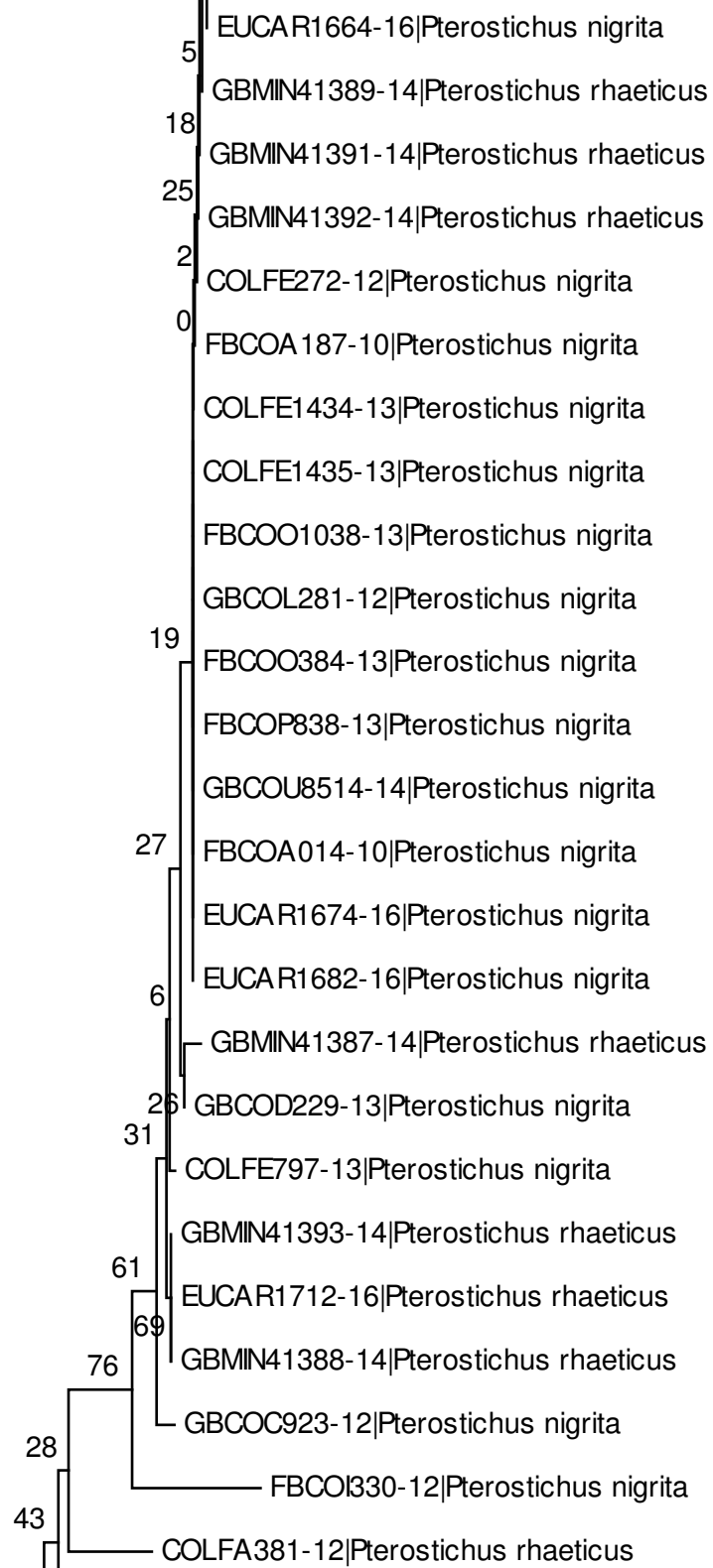


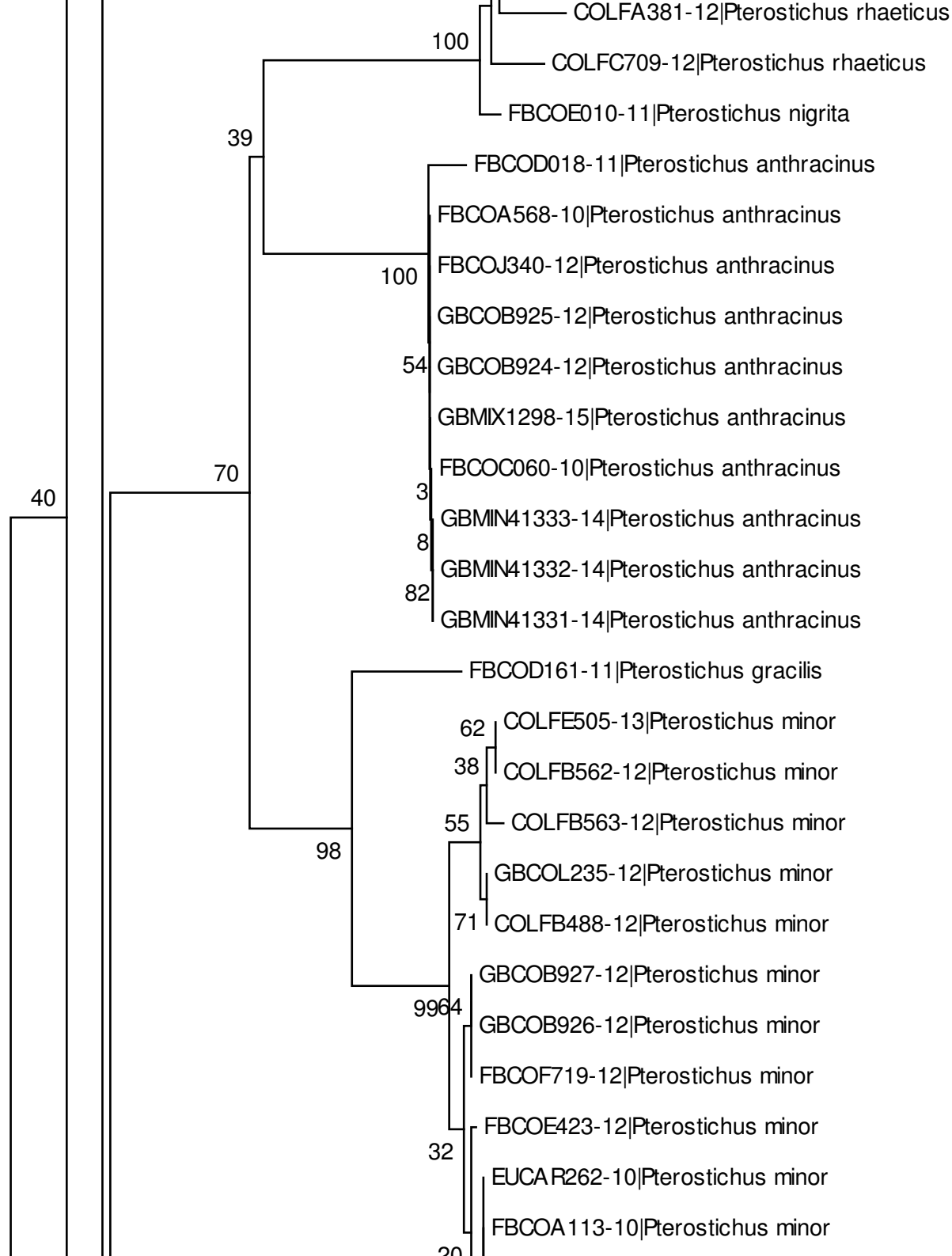


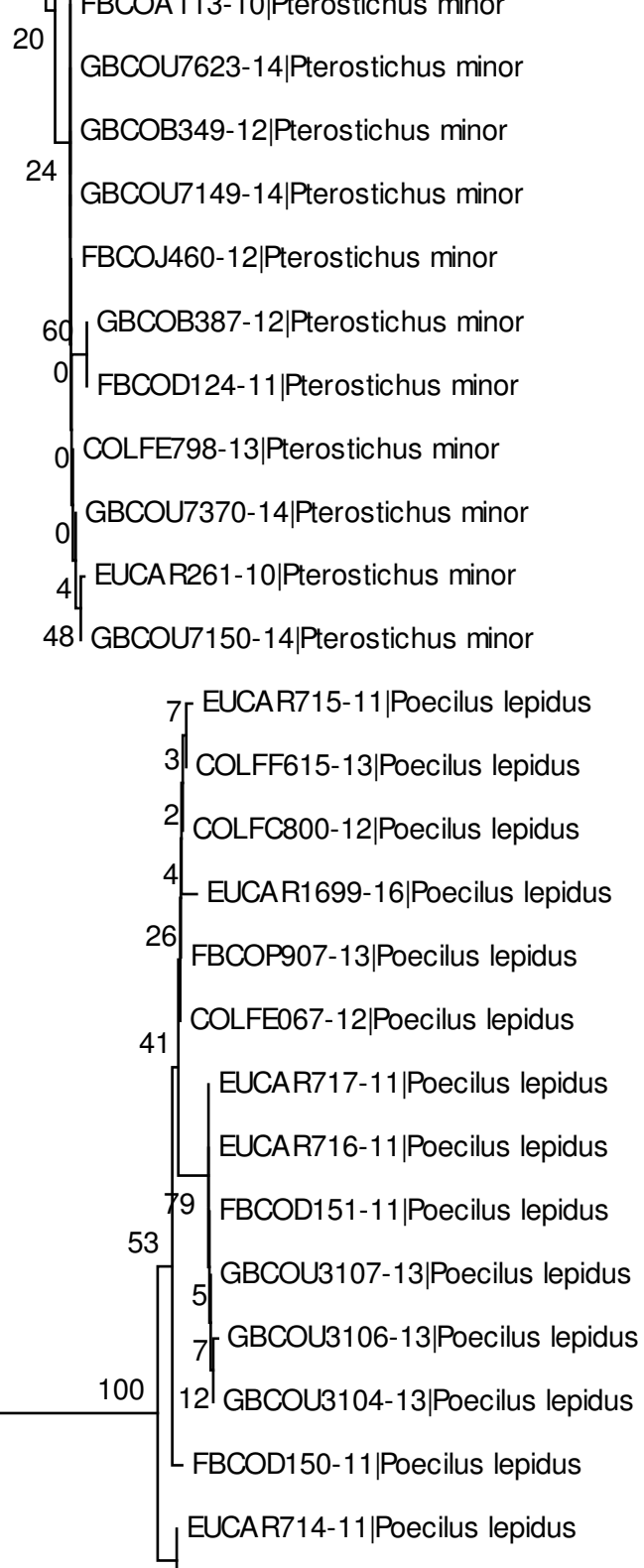


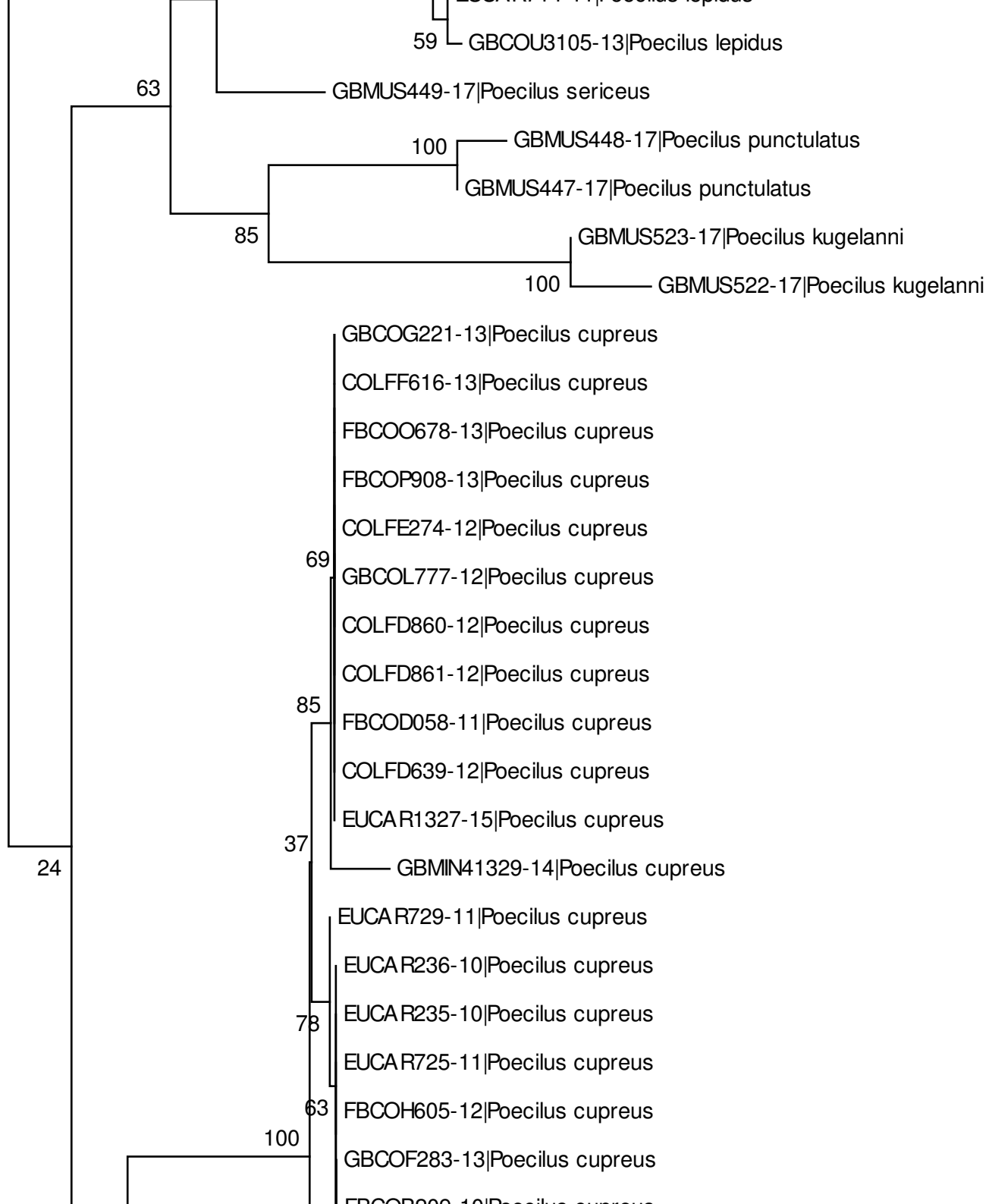


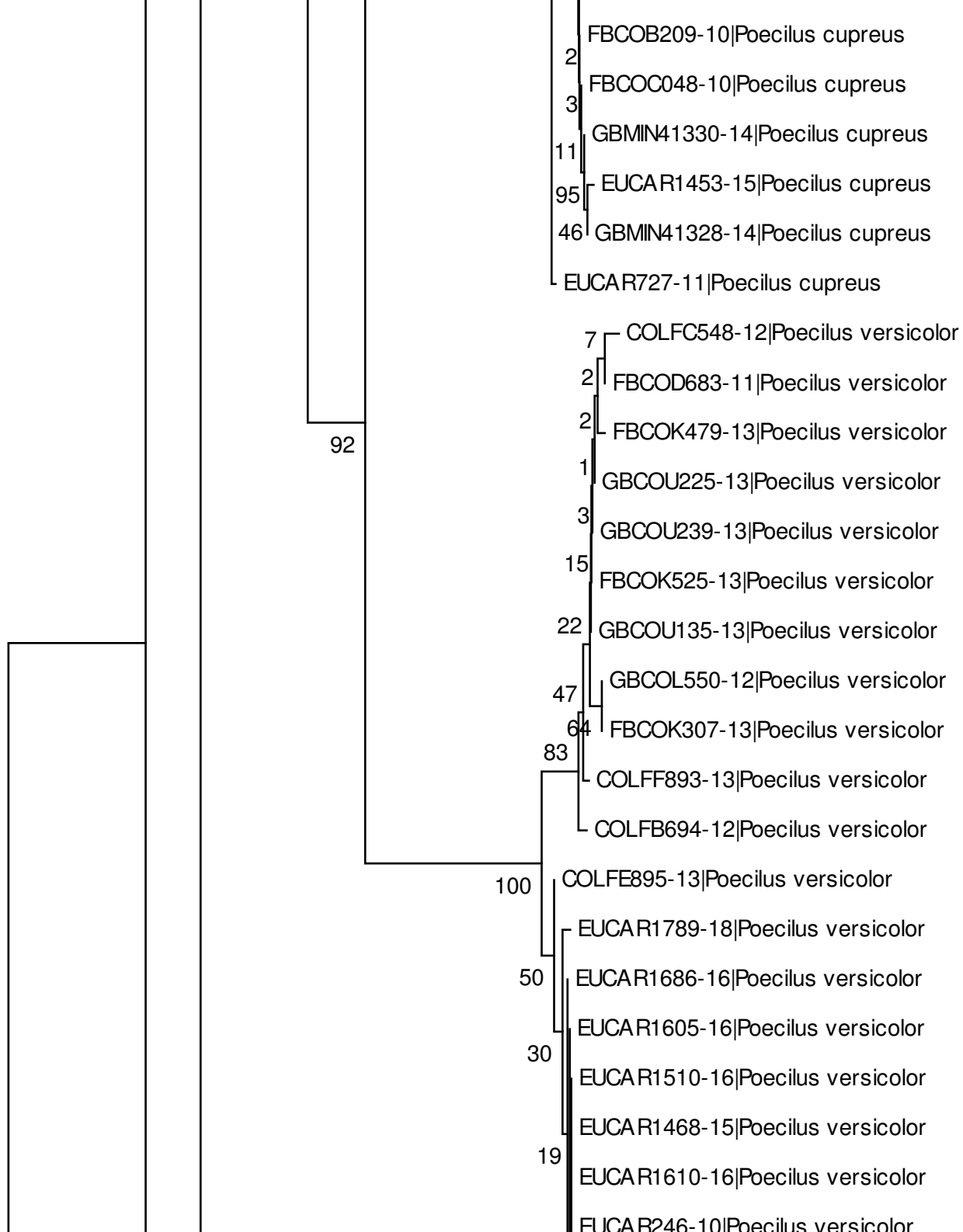




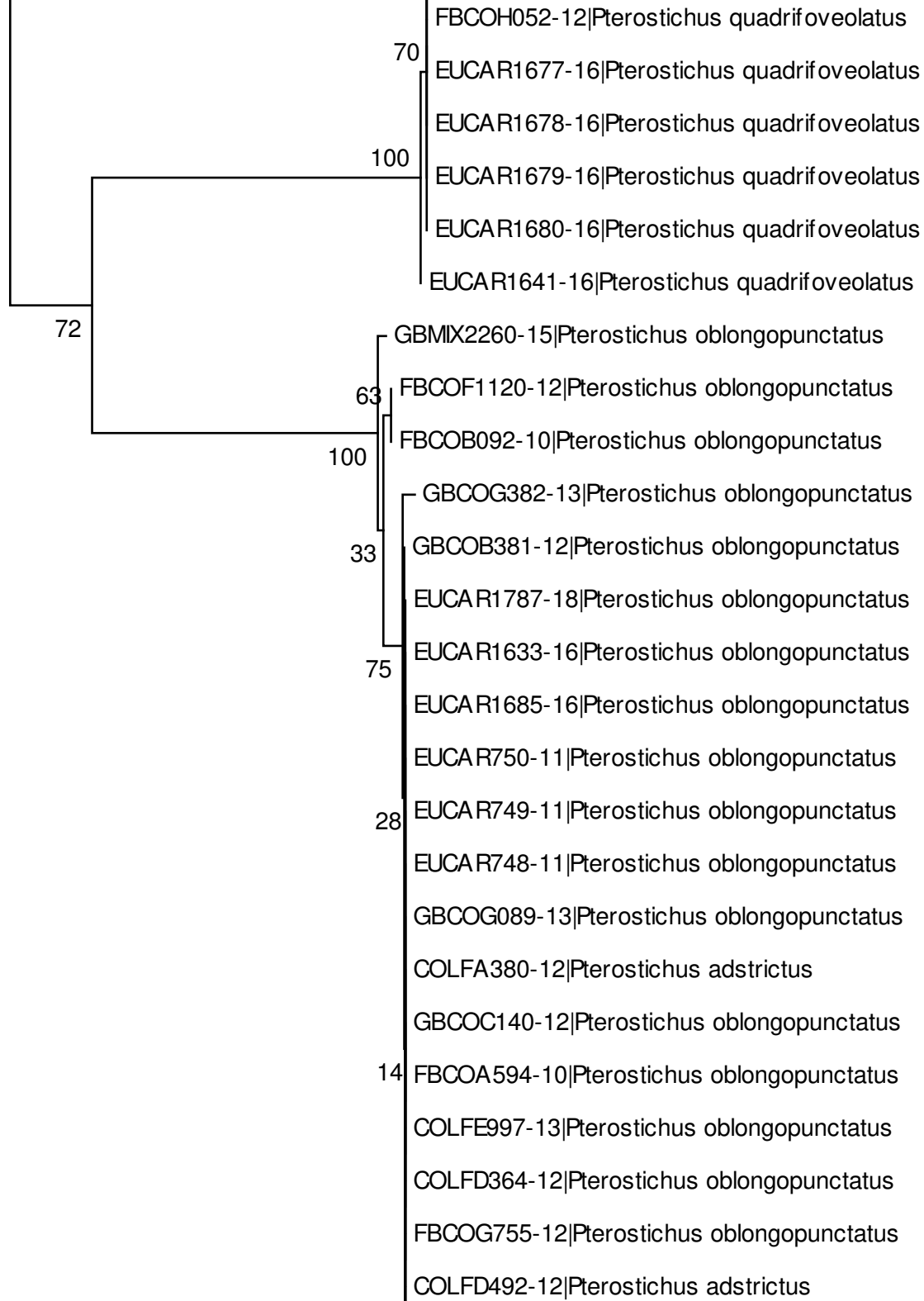




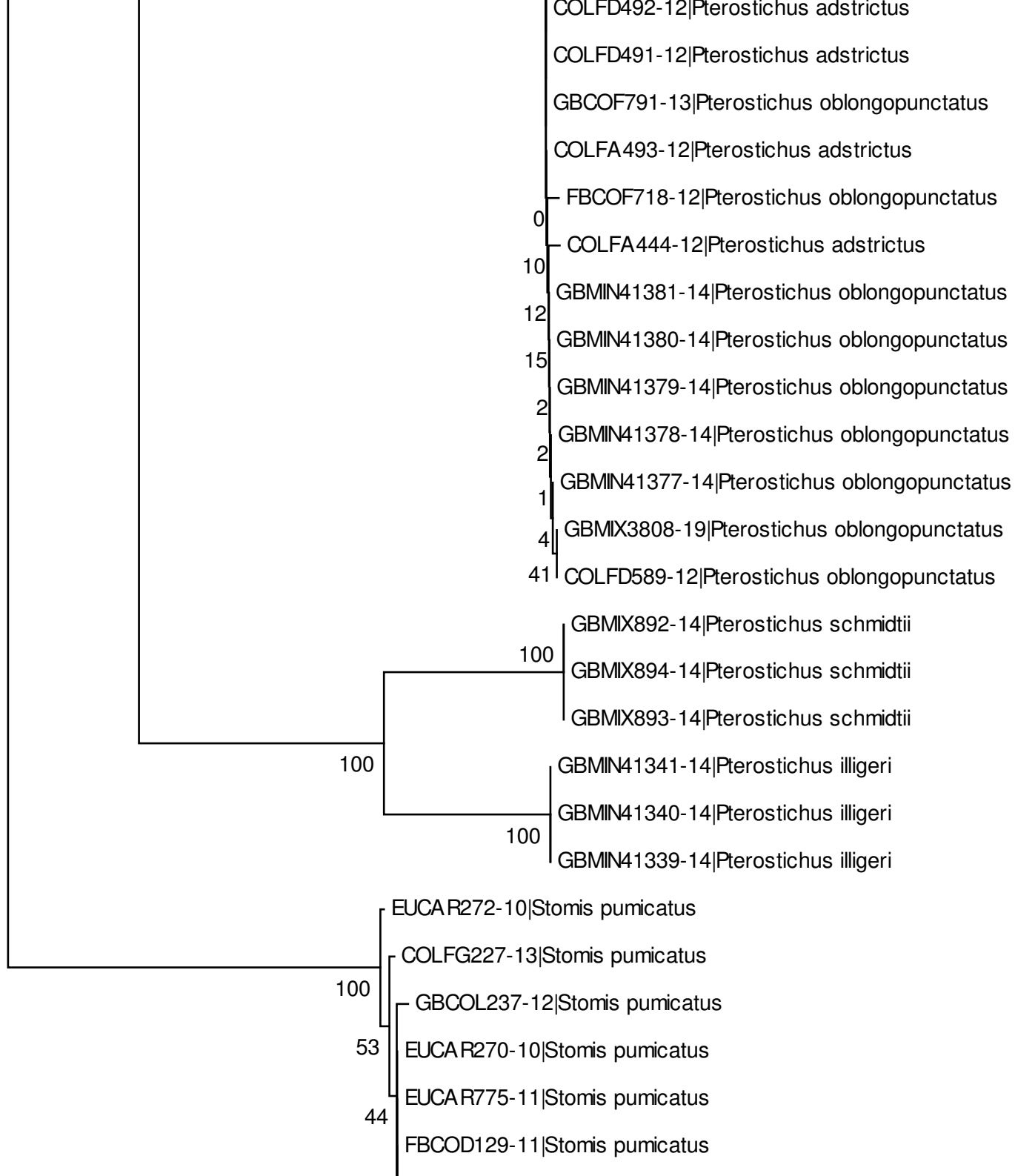




EUCAR246-10|*Poecilus versicolor*  
 EUCAR245-10|*Poecilus versicolor*  
 15 EUCAR738-11|*Poecilus versicolor*  
 EUCAR736-11|*Poecilus versicolor*  
 EUCAR735-11|*Poecilus versicolor*  
 EUCAR734-11|*Poecilus versicolor*  
 EUCAR1596-16|*Poecilus versicolor*  
 5 EUCAR1594-16|*Poecilus versicolor*  
 COLFE591-13|*Poecilus versicolor*  
 GBCOG150-13|*Poecilus versicolor*  
 GBCOL778-12|*Poecilus versicolor*  
 GBCOE605-13|*Poecilus versicolor*  
 GBCOE586-13|*Poecilus versicolor*  
 COLFC725-12|*Poecilus versicolor*  
 GBCOL279-12|*Poecilus versicolor*  
 COLFA448-12|*Poecilus versicolor*  
 FBCOD075-11|*Poecilus versicolor*  
 0 GBCOG114-13|*Poecilus versicolor*  
 0 EUCAR1258-15|*Poecilus versicolor*  
 1 EUCAR1657-16|*Poecilus versicolor*  
 3 EUCAR1662-16|*Poecilus versicolor*  
 12 EUCAR1662-16|*Poecilus versicolor*  
 24 EUCAR737-11|*Poecilus versicolor*  
 EUCAR1666-16|*Pterostichus quadrifoveolatus*  
 FBCOJ820-13|*Pterostichus quadrifoveolatus*  
 FBCOH052-12|*Pterostichus quadrifoveolatus*







FBCOD129-11|*Stomis pumicatus*  
26 FBCOH650-12|*Stomis pumicatus*  
FBCOE1306-12|*Stomis pumicatus*  
GBCOB490-12|*Stomis pumicatus*  
1 COLFE185-12|*Stomis pumicatus*  
7 FBCOC066-10|*Stomis pumicatus*

0.020