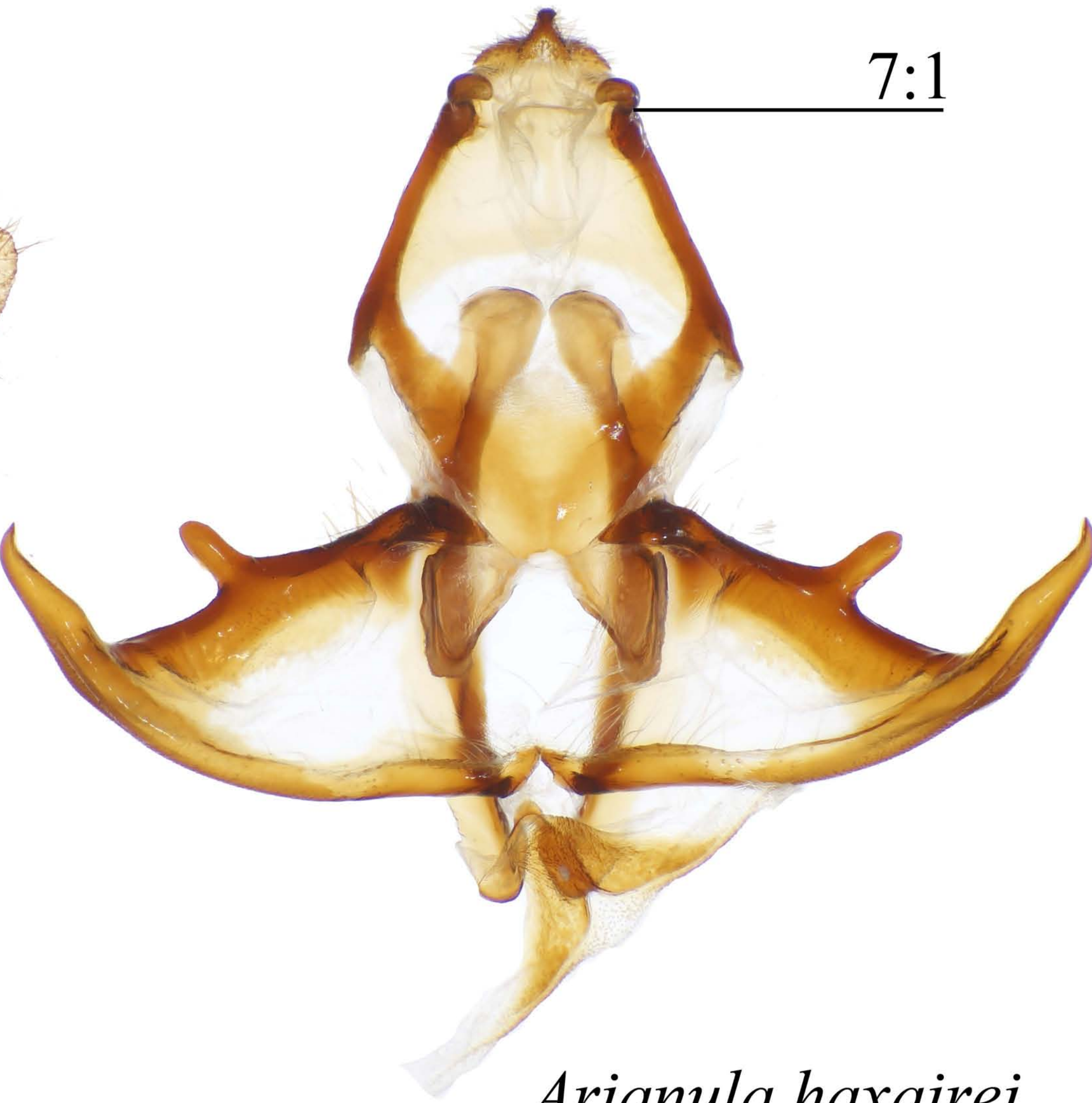
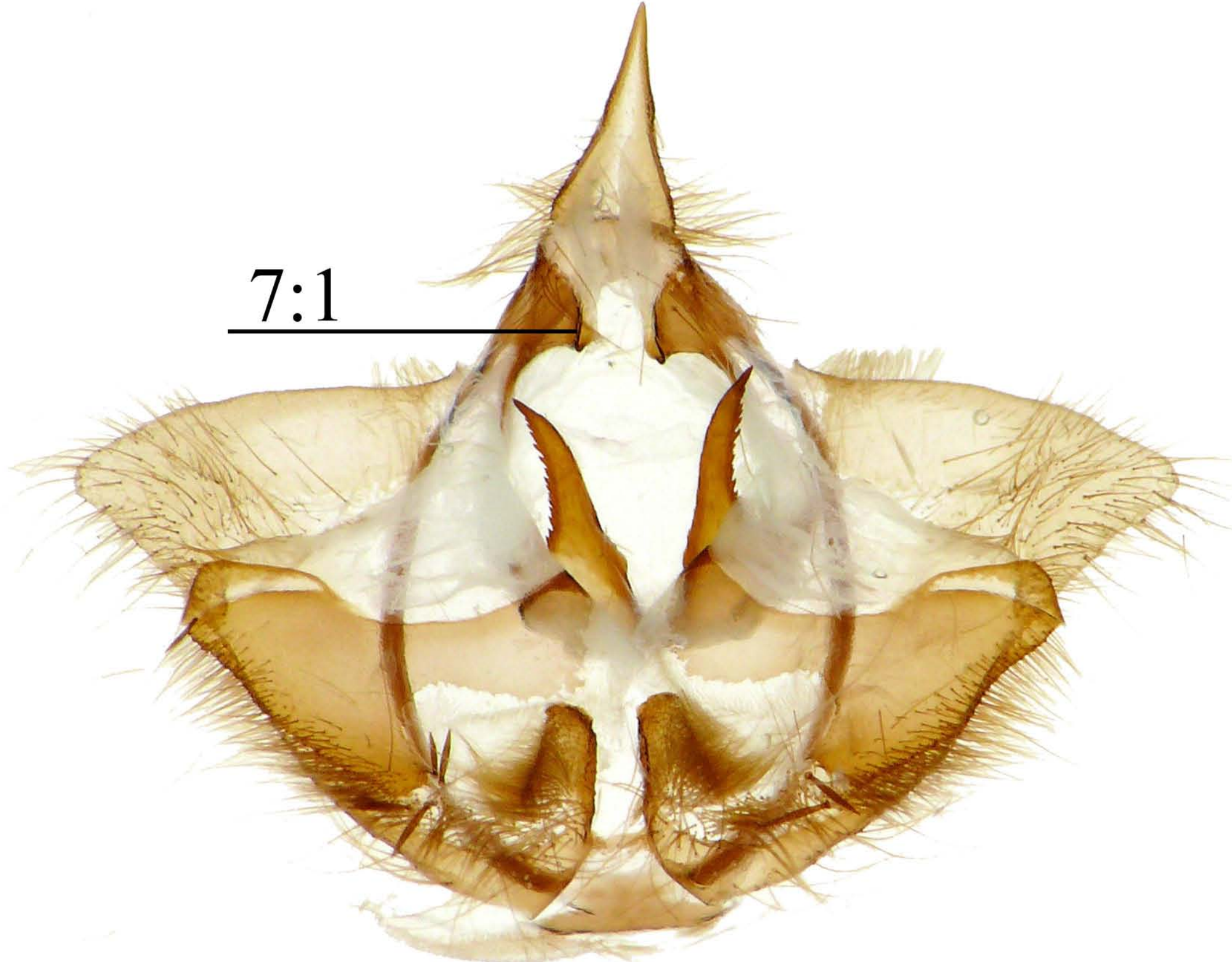


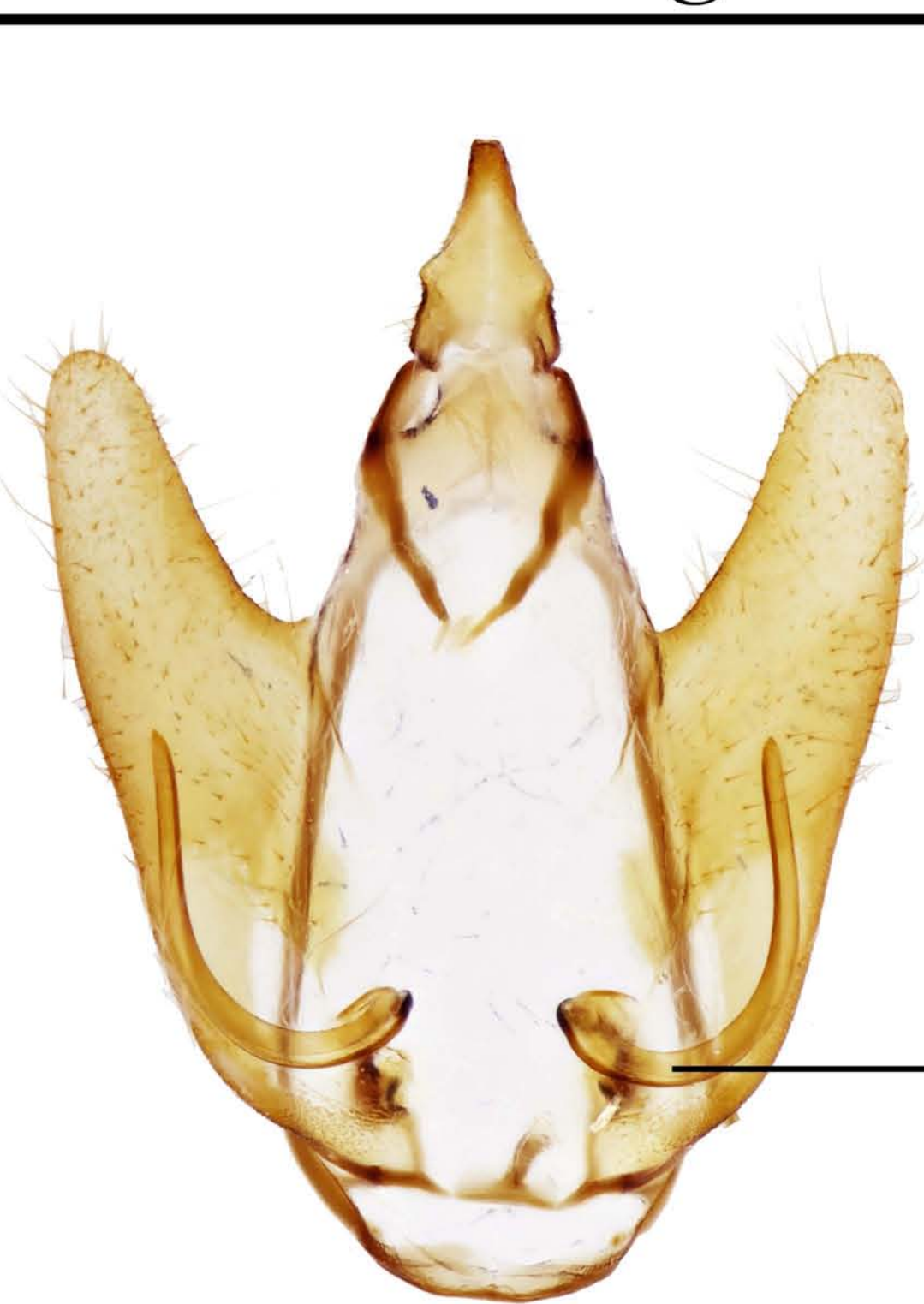
Adalgisa croesa



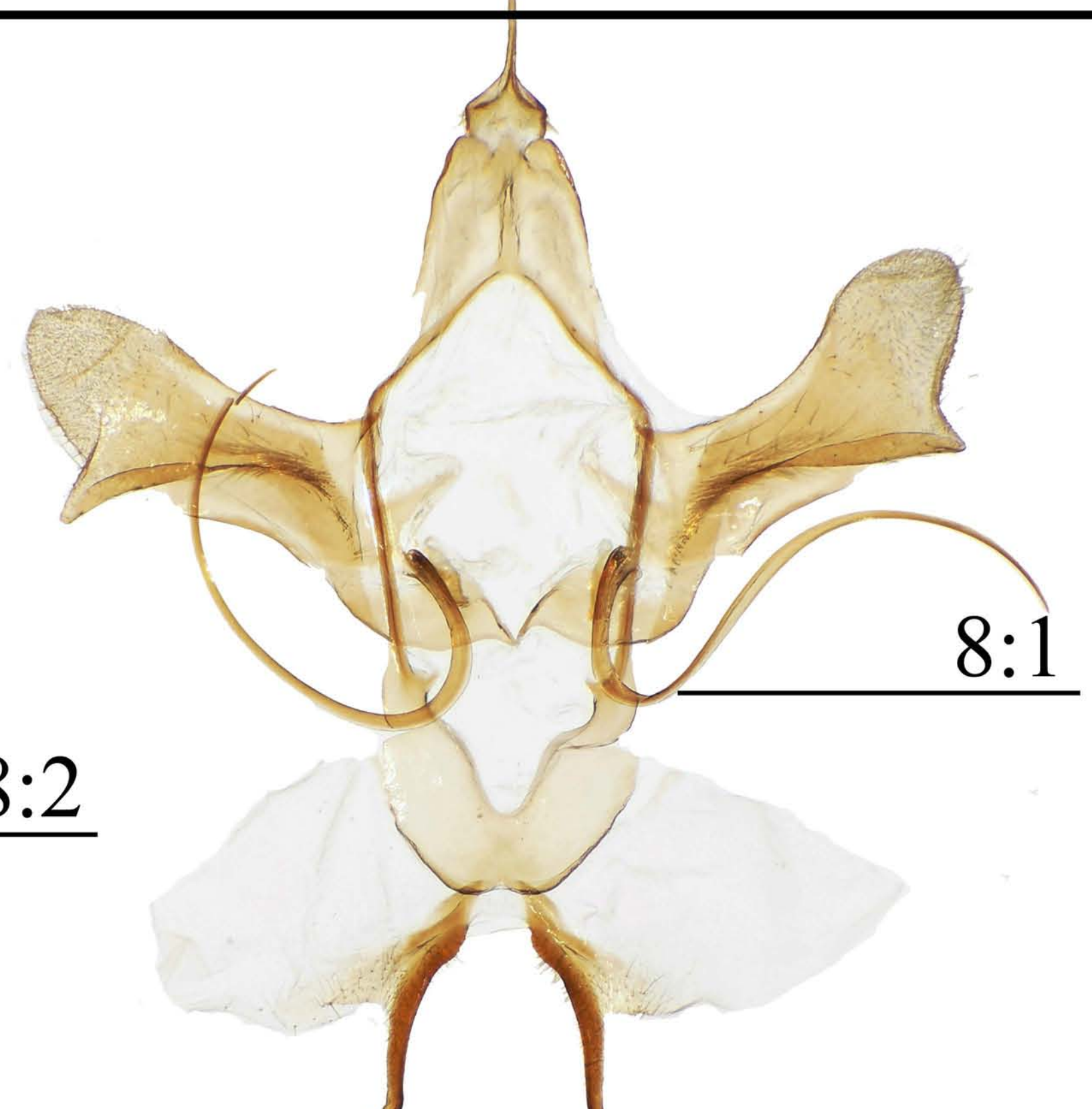
Arianula haxairei



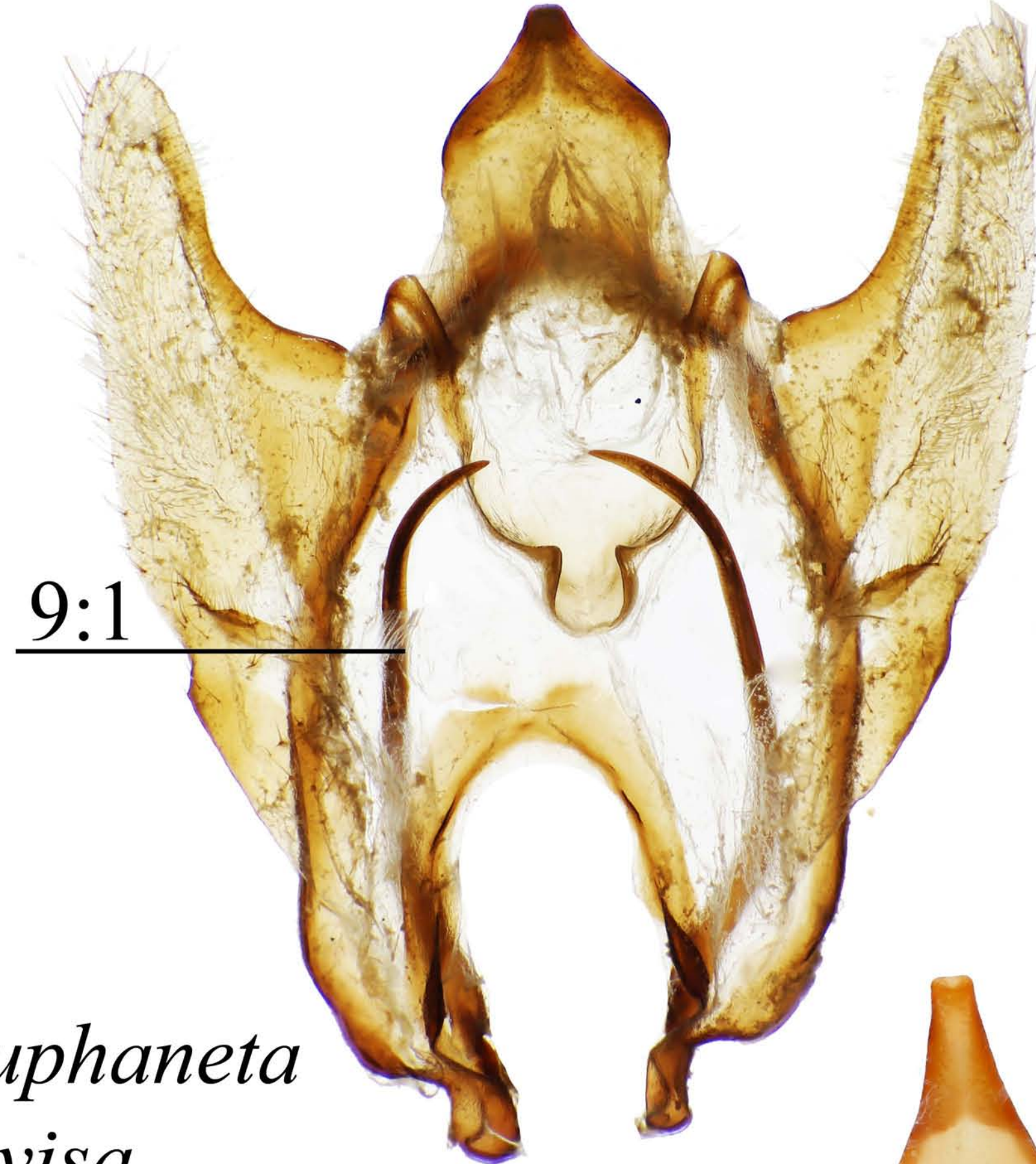
Lacosoma cf diderica



Pamea albistriga



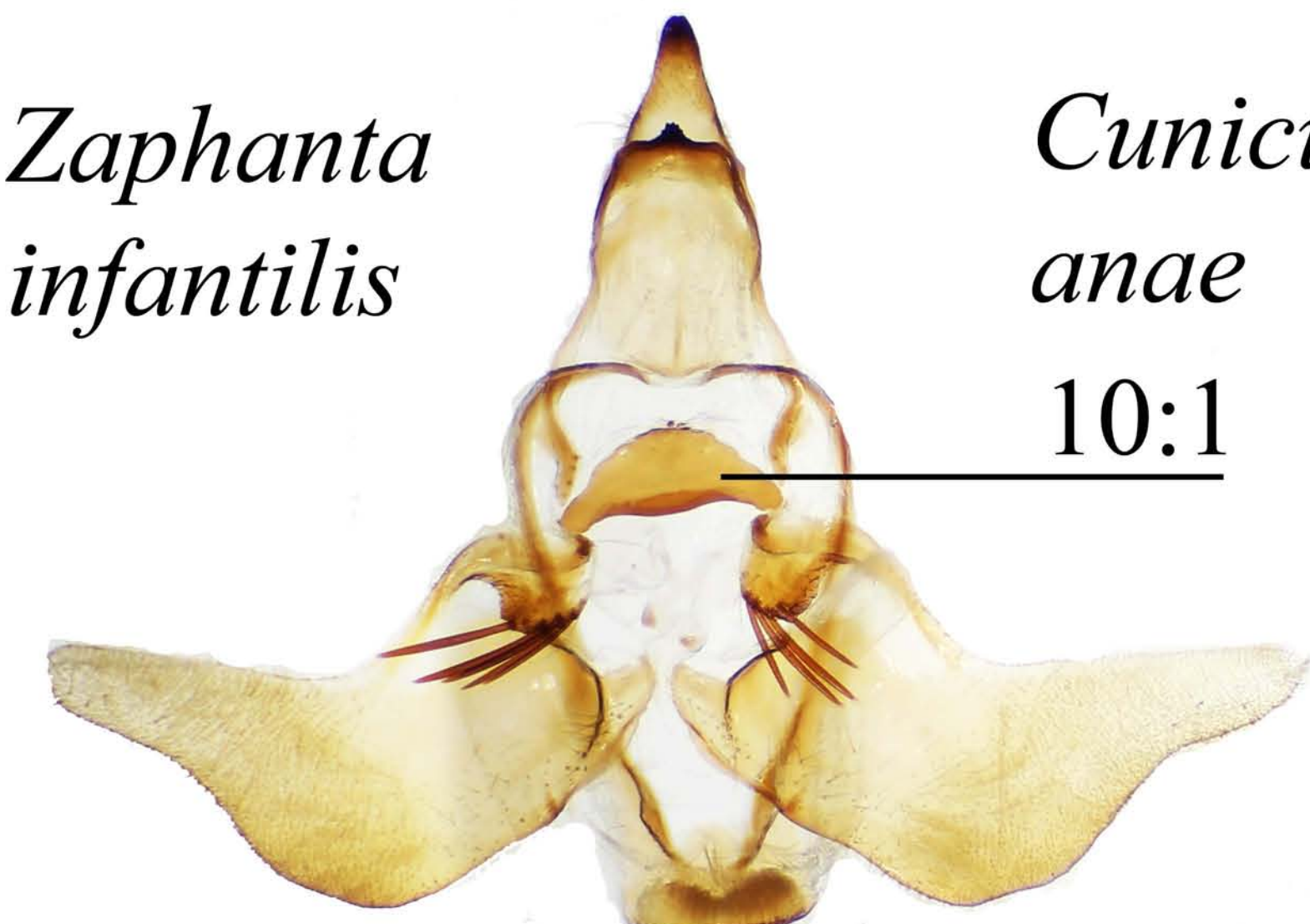
Ulaluma valva



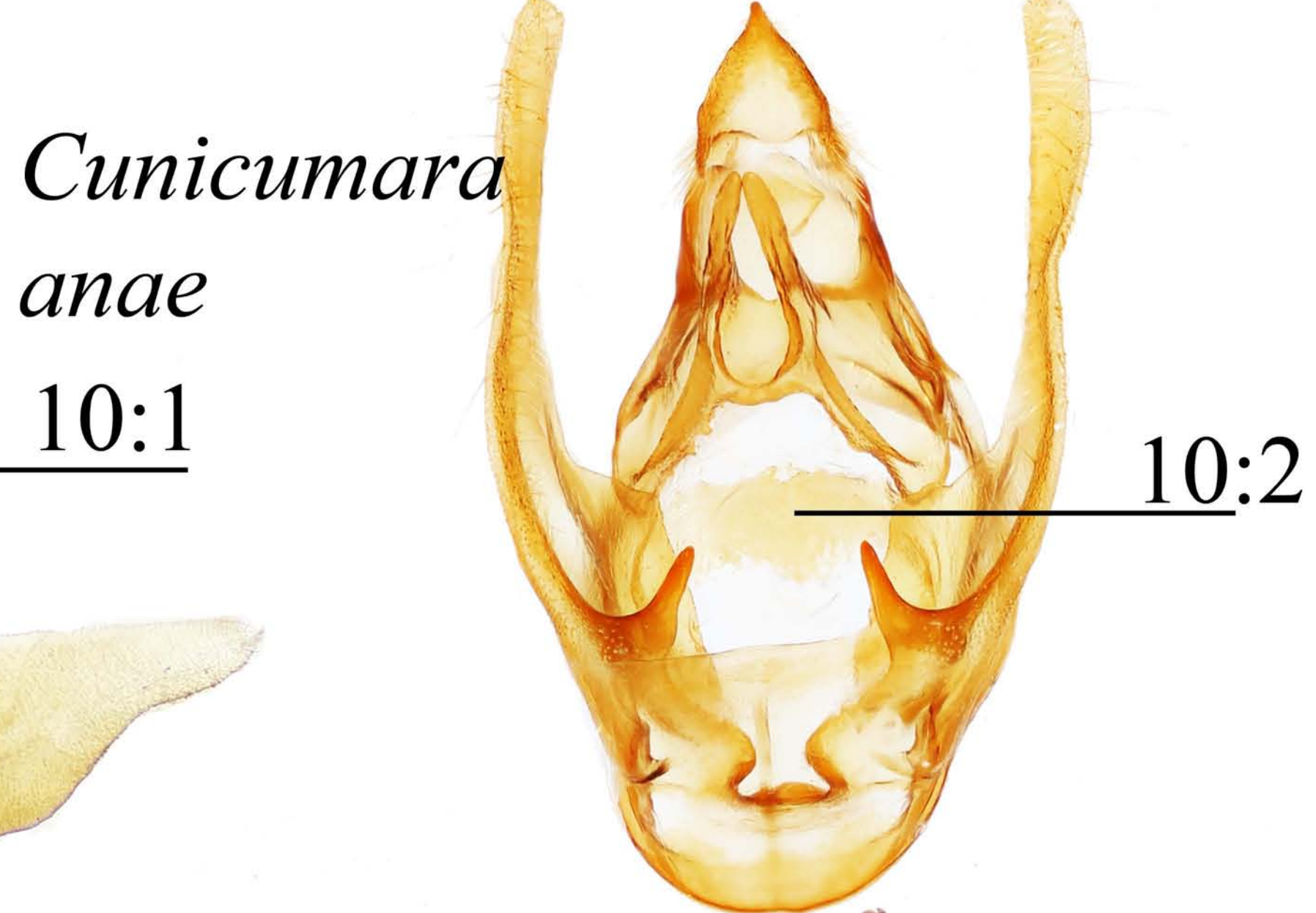
Euphaneta divisa



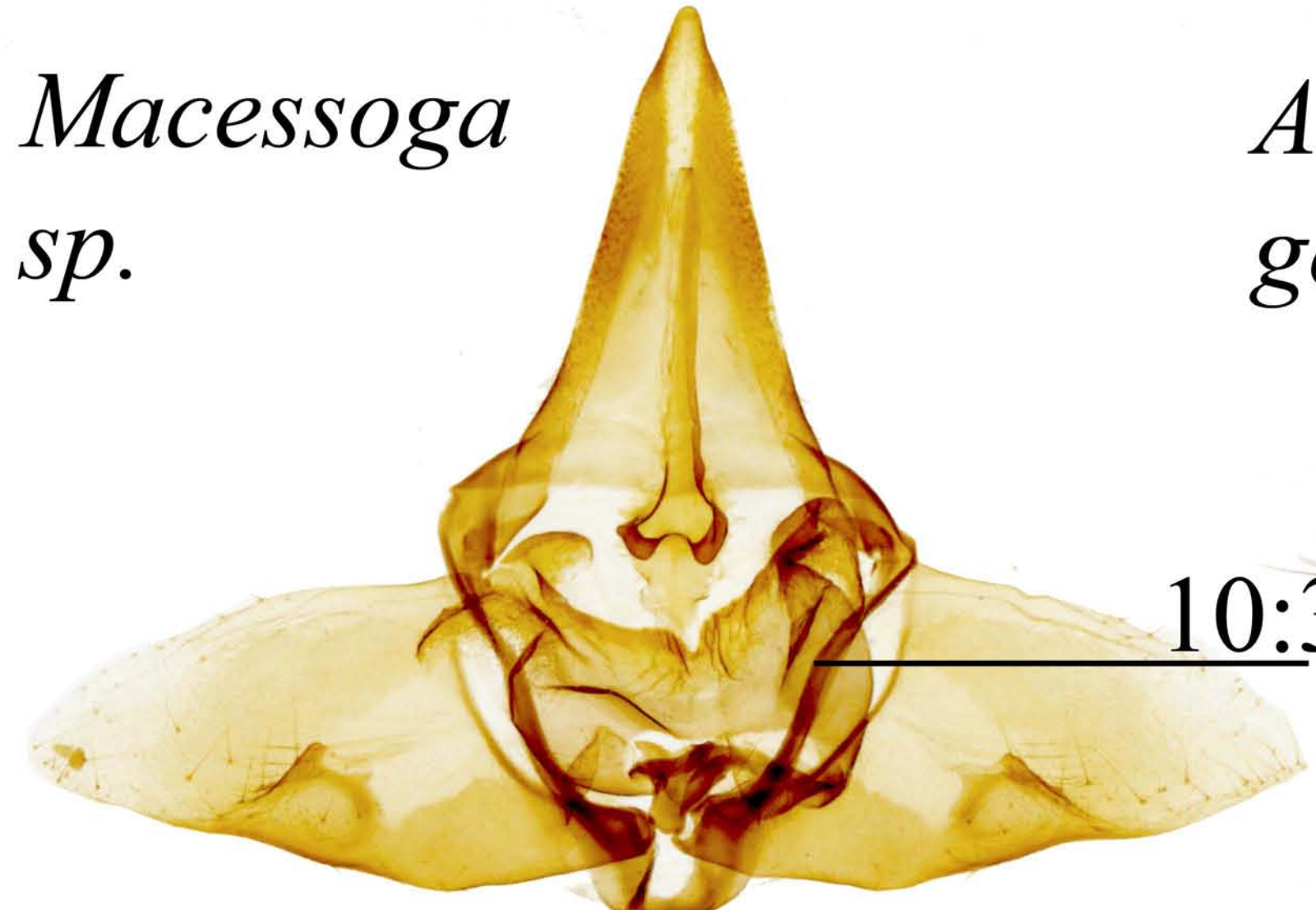
Arcinnus hoedli



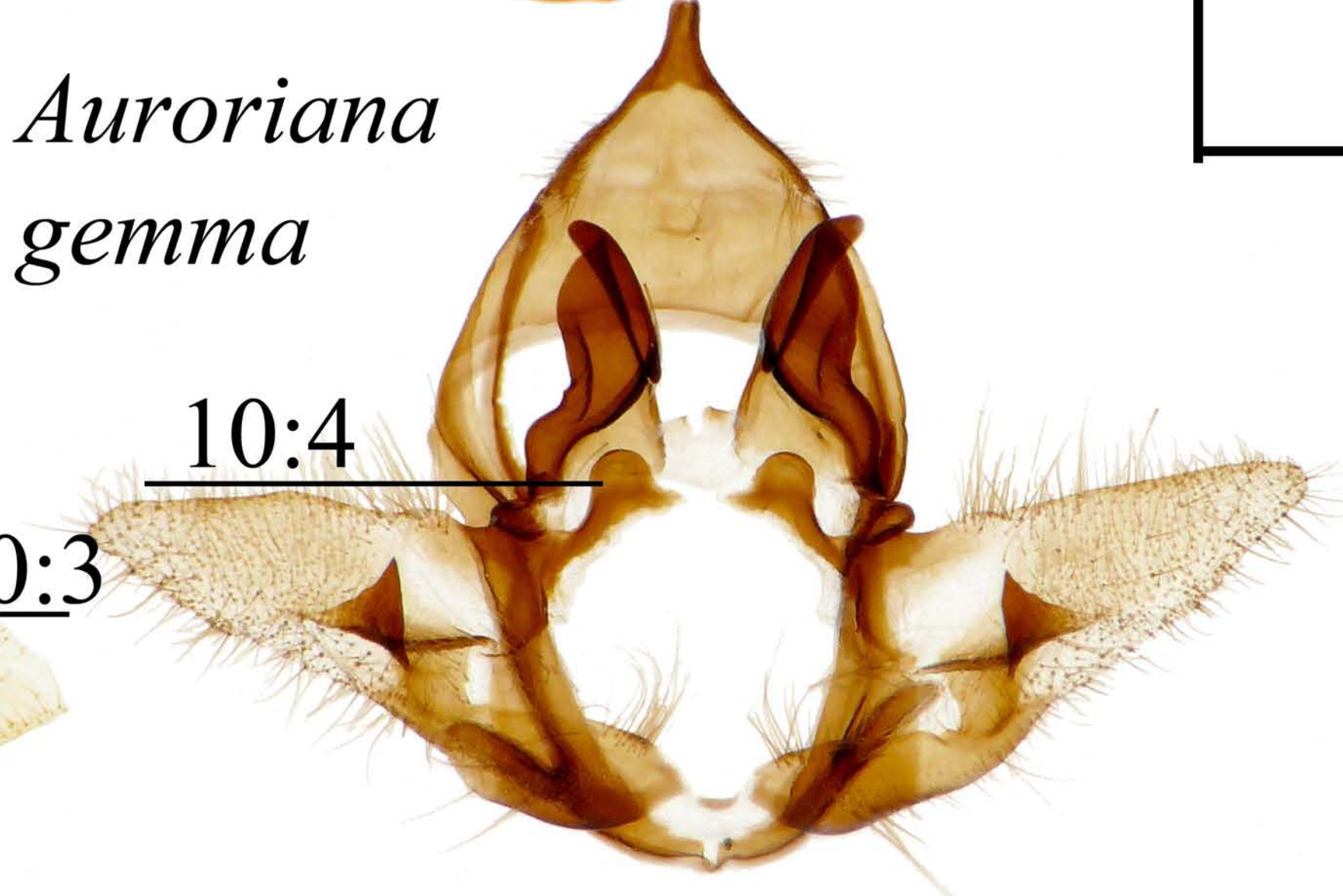
Zaphanta infantilis



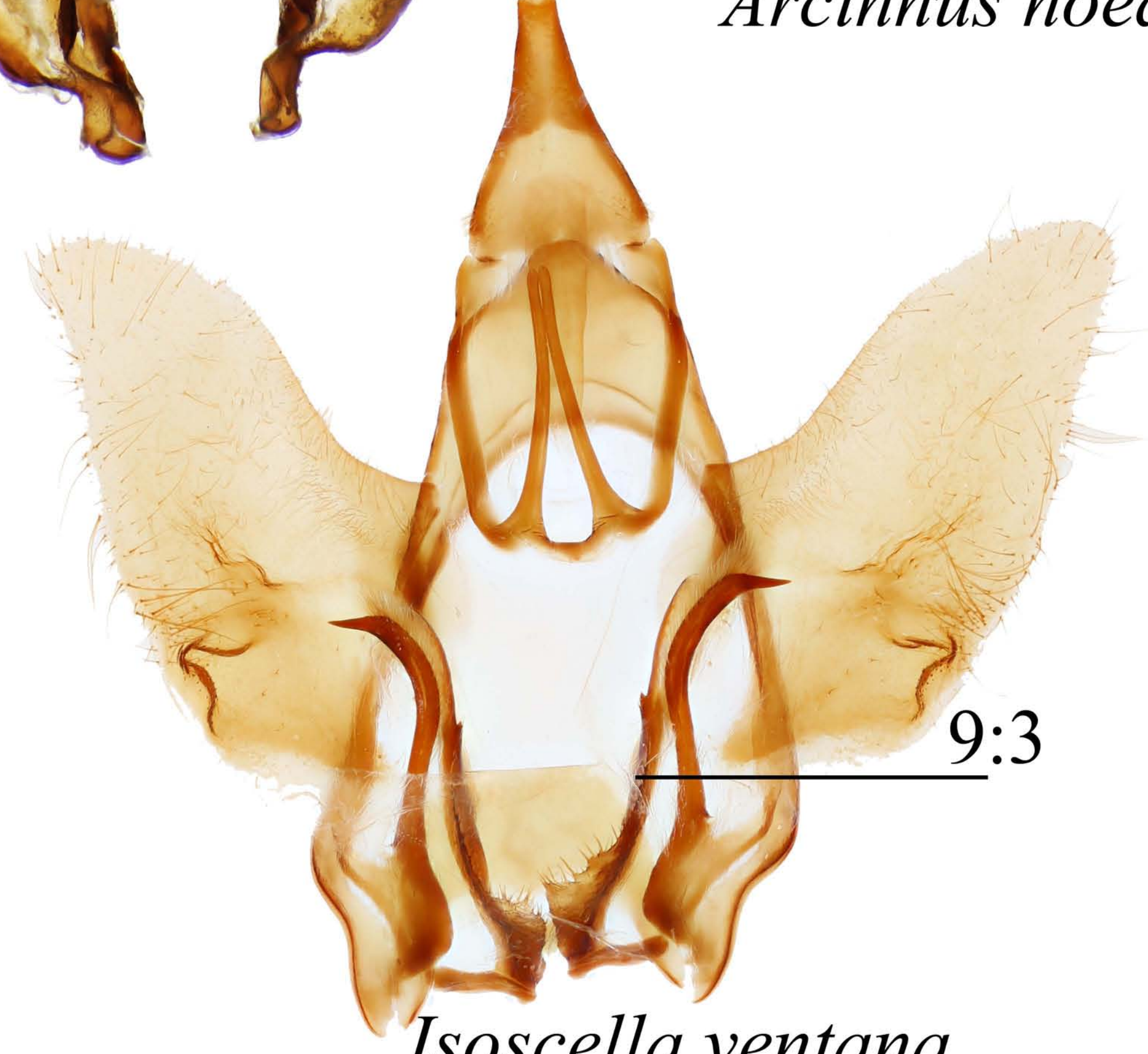
Cunicumara anae



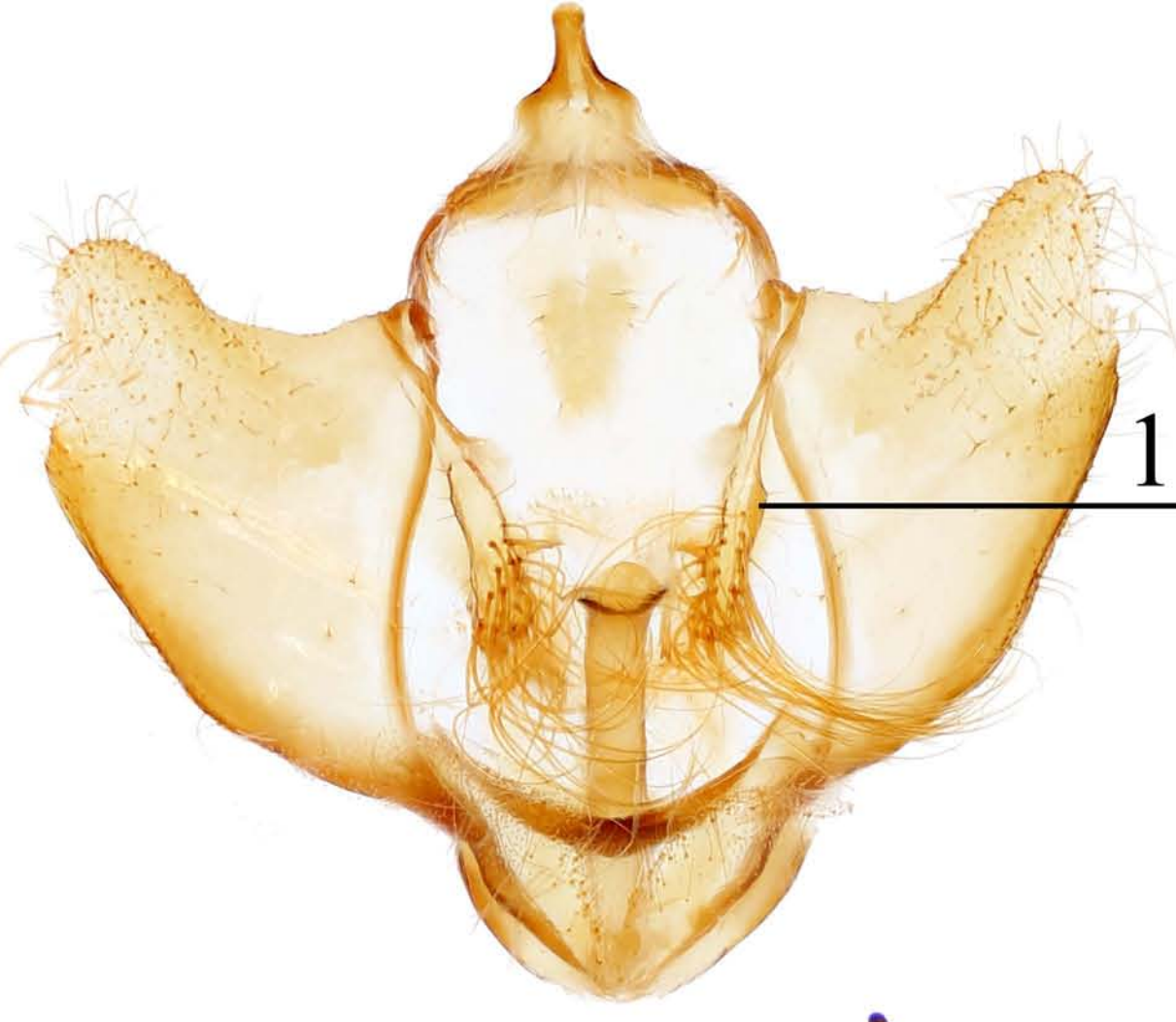
Macessoga sp.



Auroriana gemma

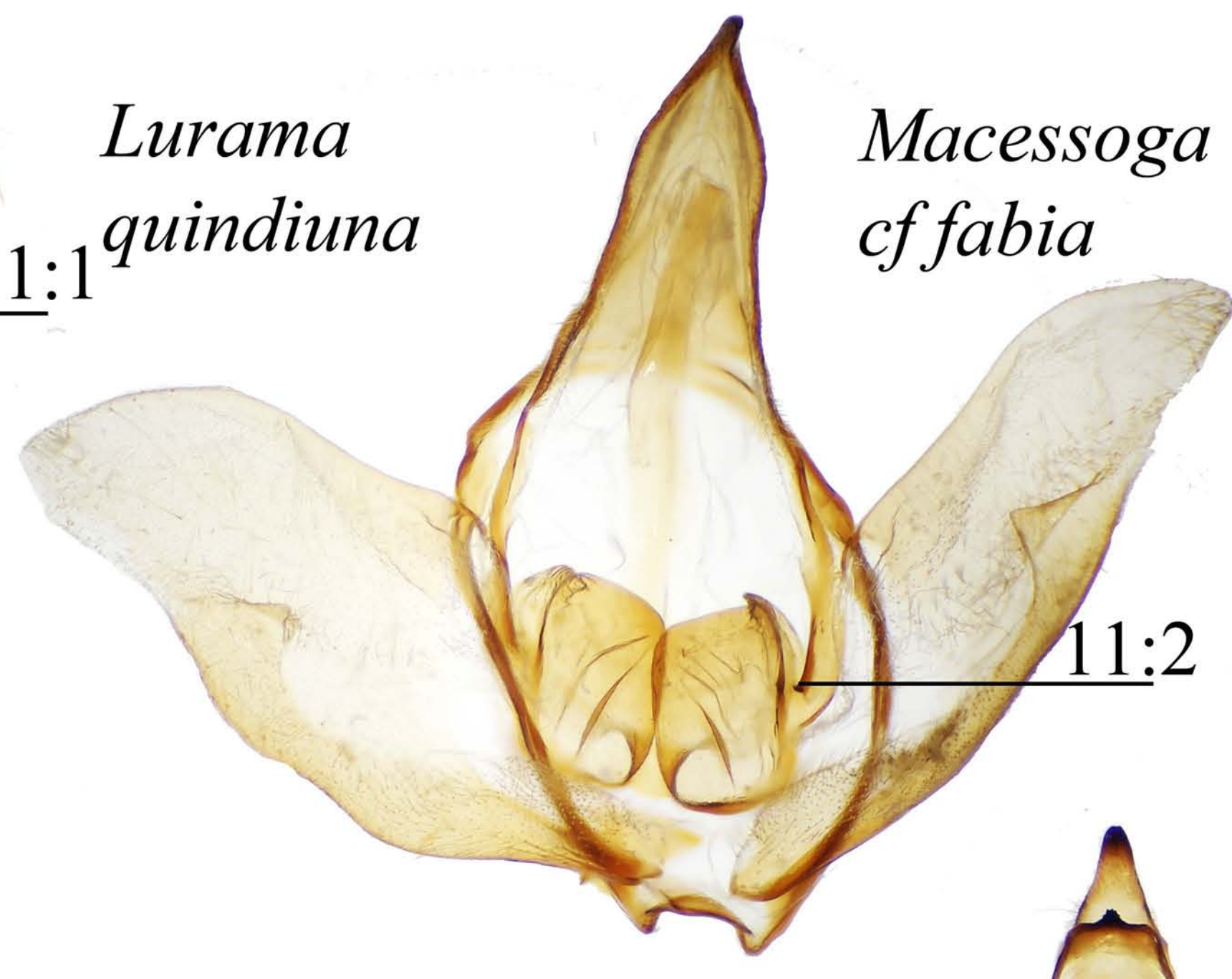


Isoscella ventana



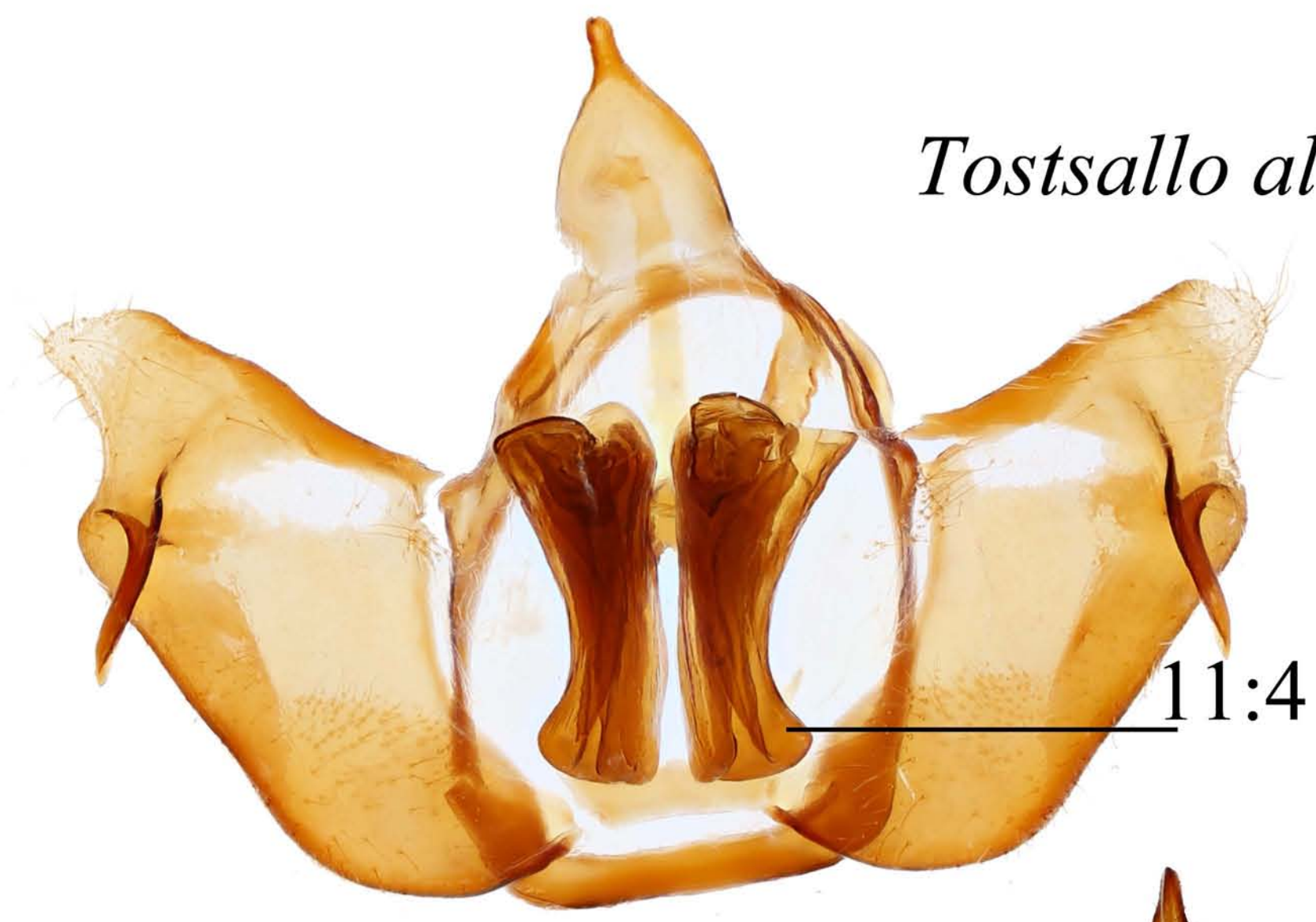
*Lurama
quindiuna*

11:1



*Macessoga
cf fabia*

11:2



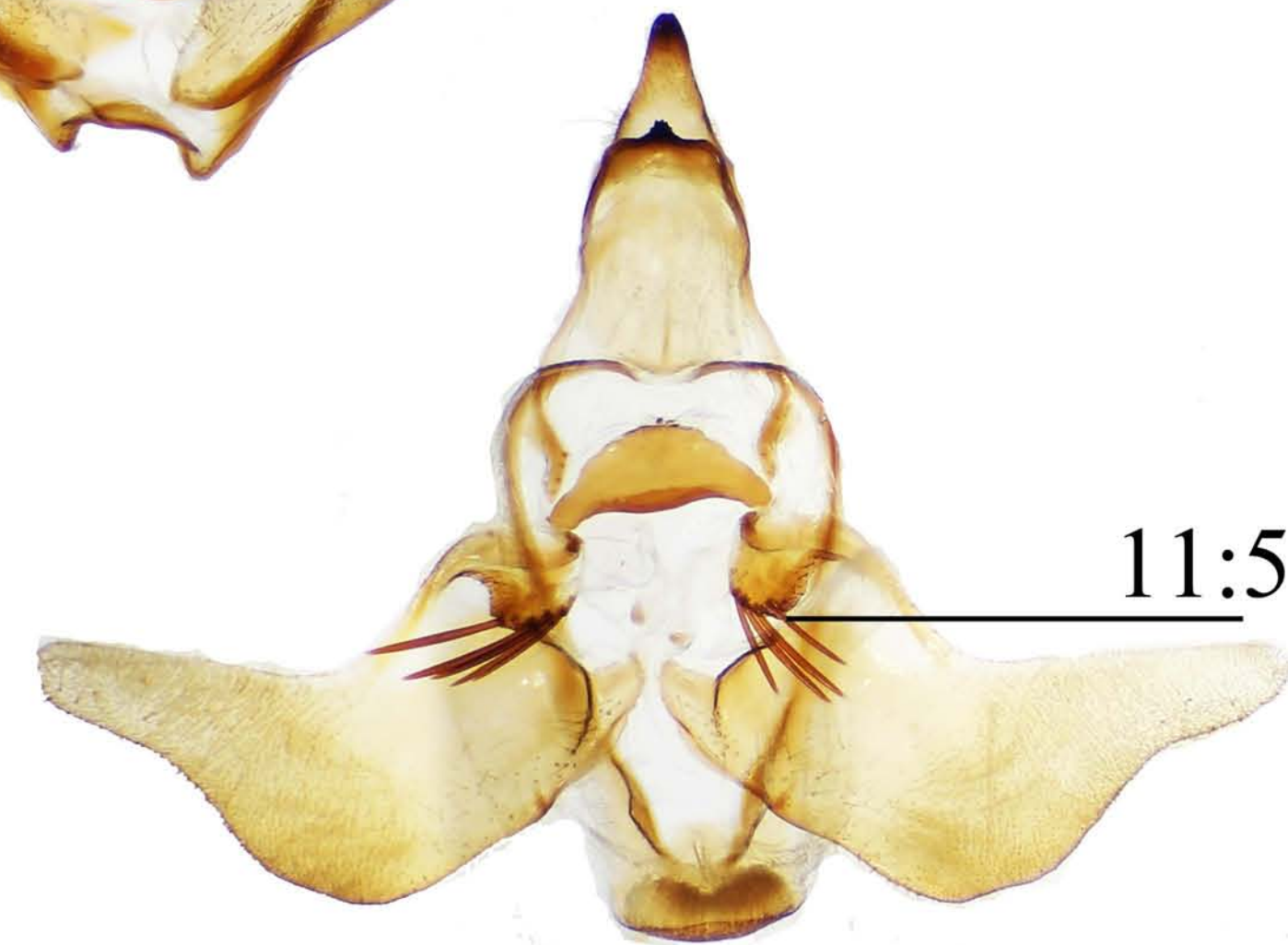
Tostsallo albescens

11:4



Mimallo grisea

11:3



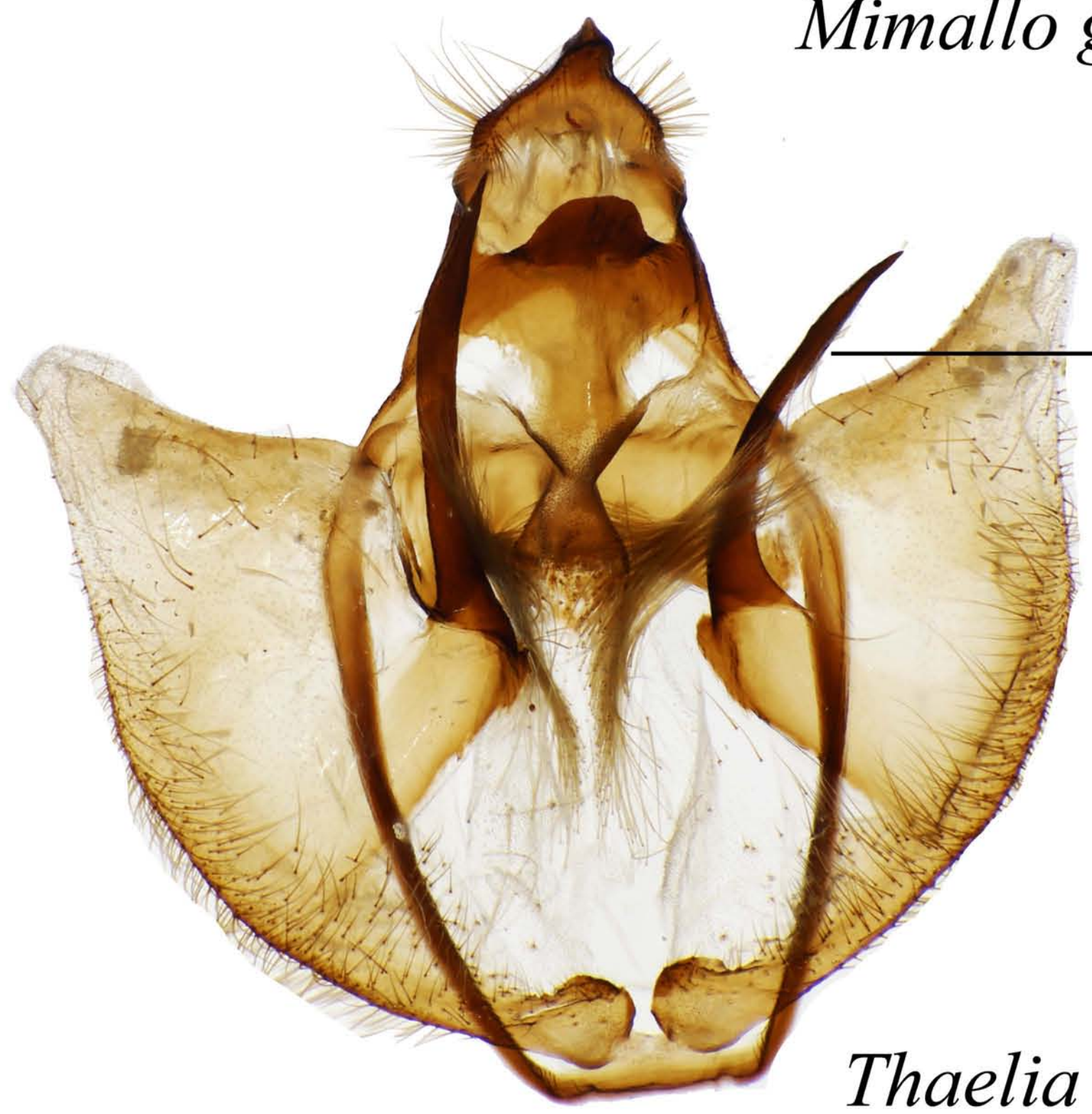
Zaphanta infantilis

11:5



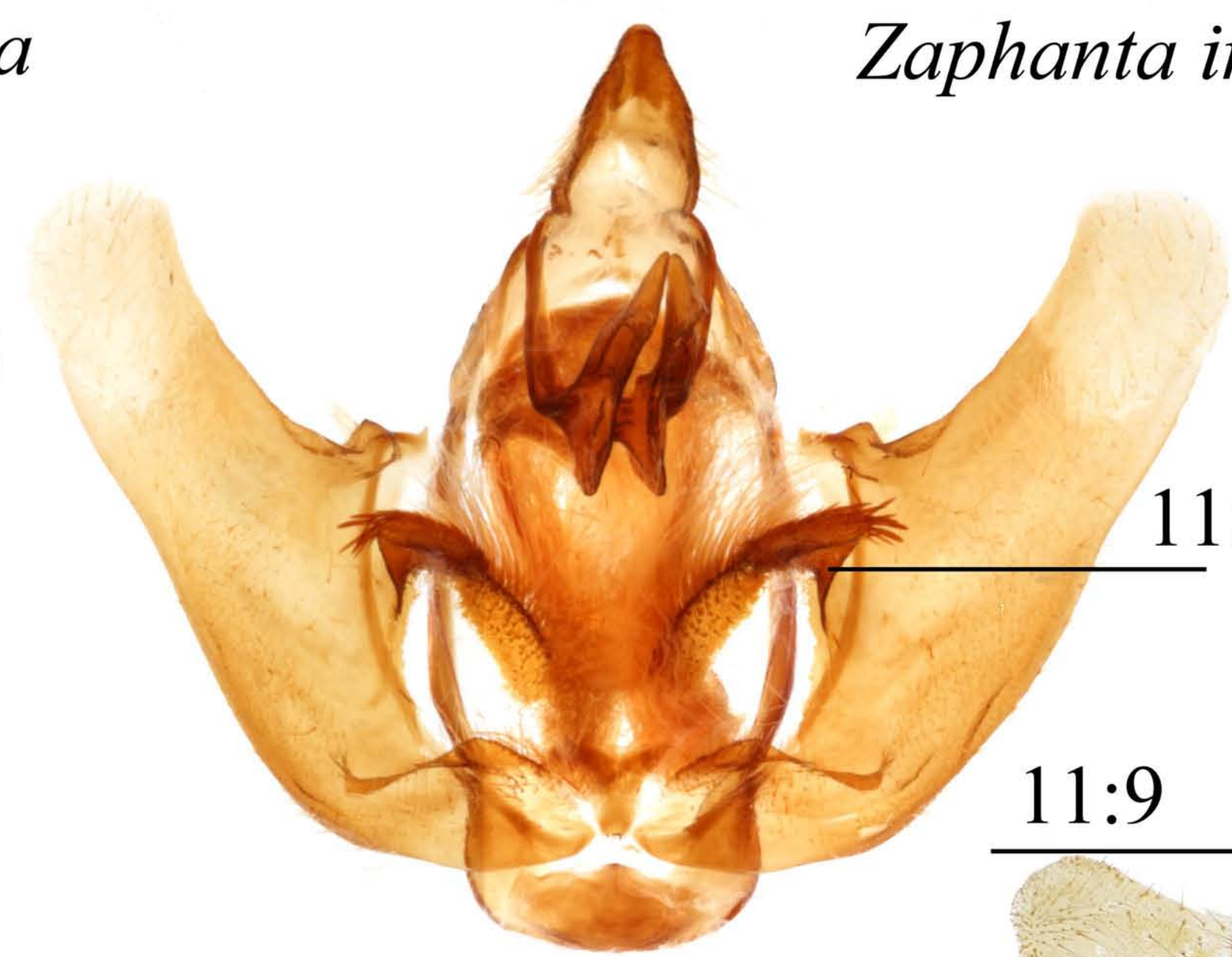
11:A

*Tarema
rivara*



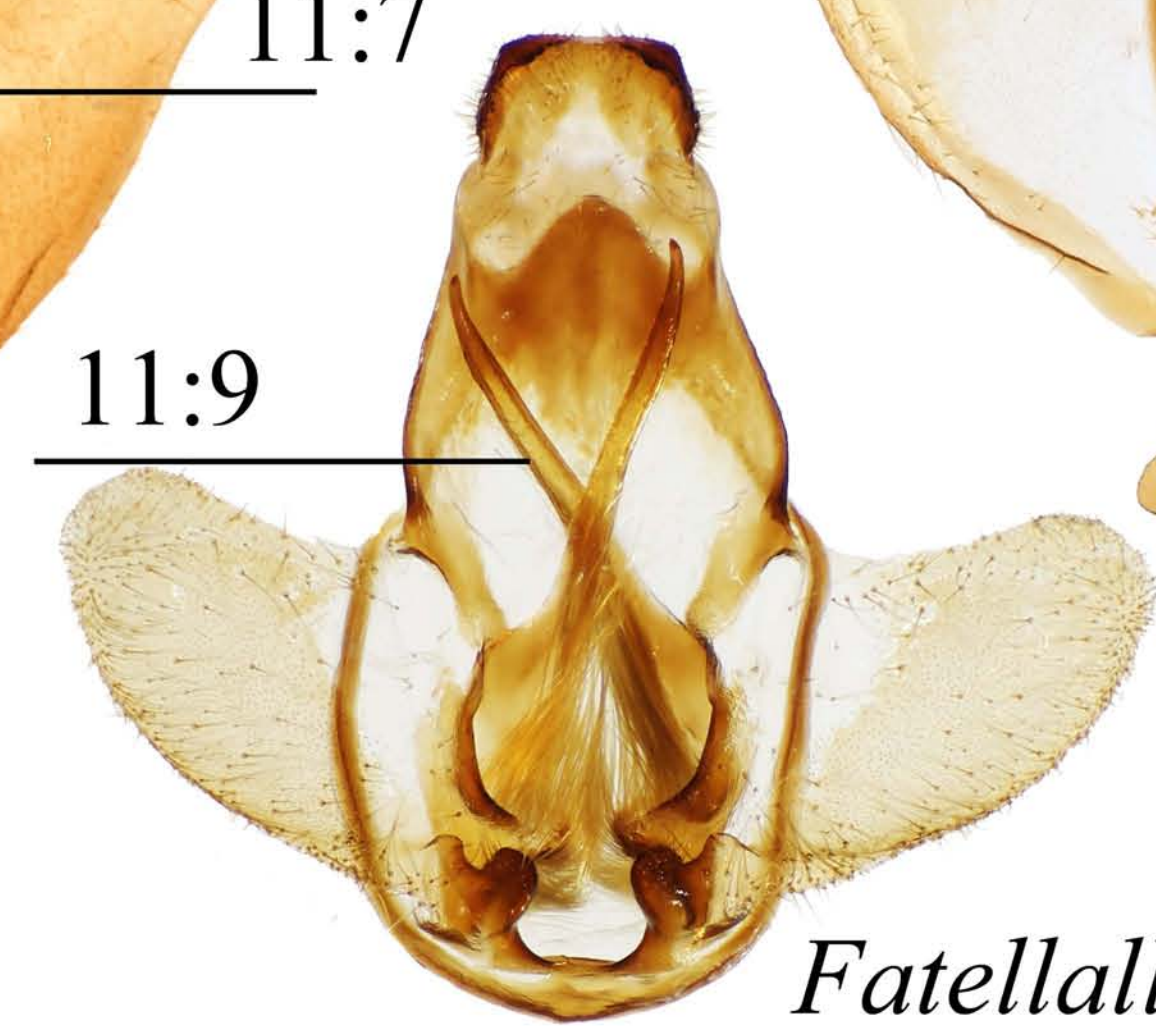
Thaelia anysia

11:6



Roelofa cf narga

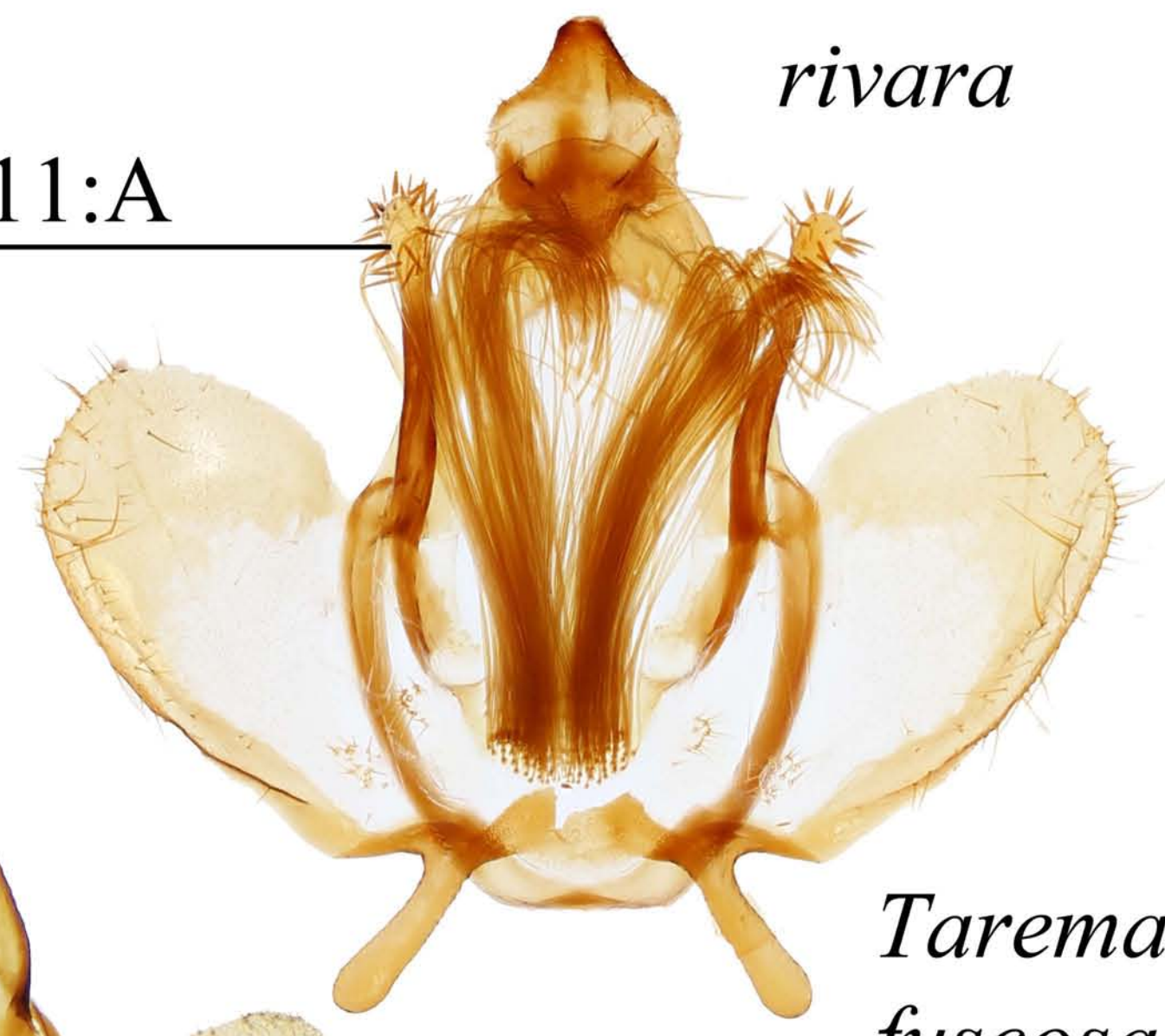
11:7



Fatellalla fatella

11:9

11:A



*Tarema
fuscata*



Menevia lantona

11:8



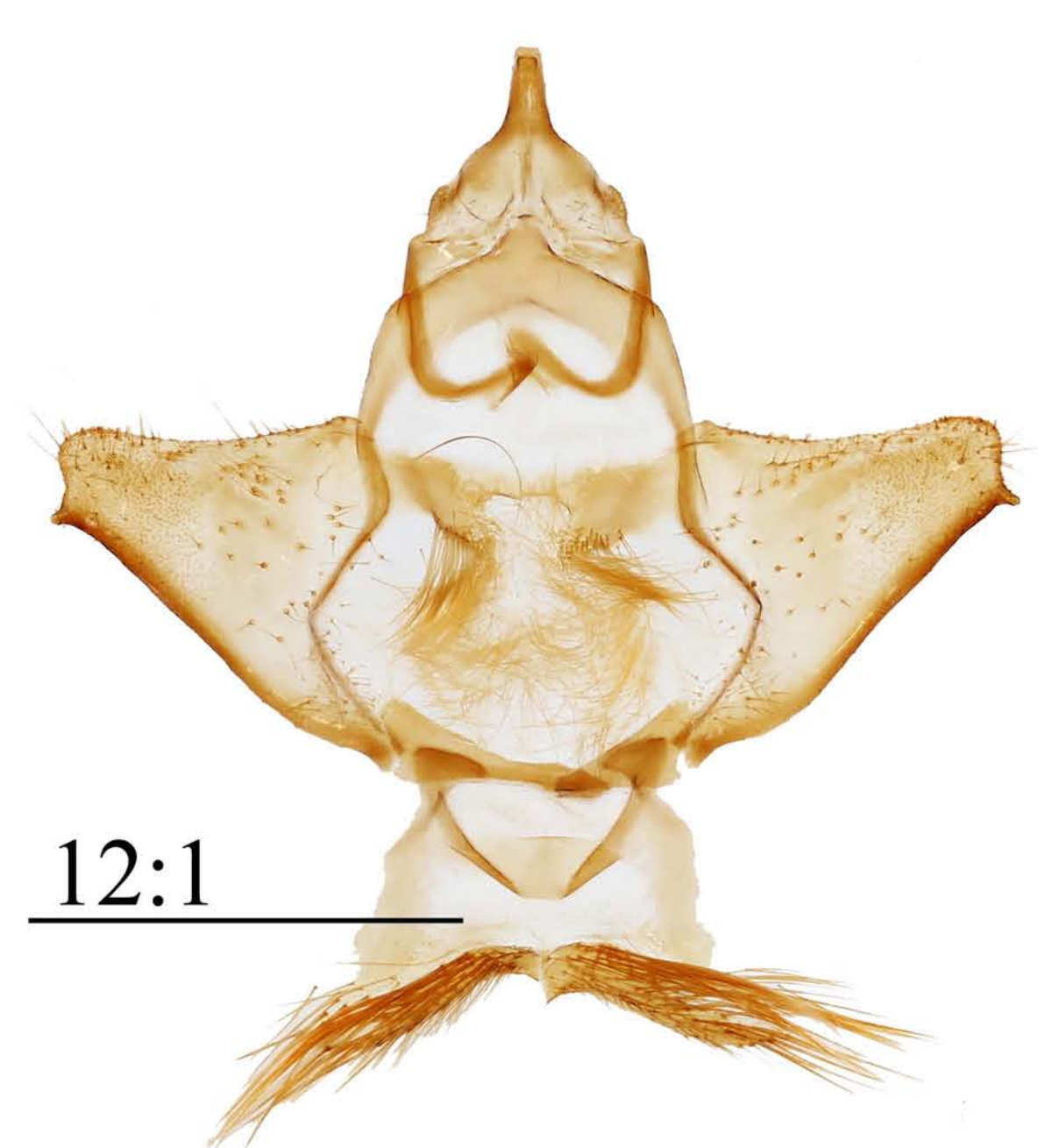
Druentica partha

12:1



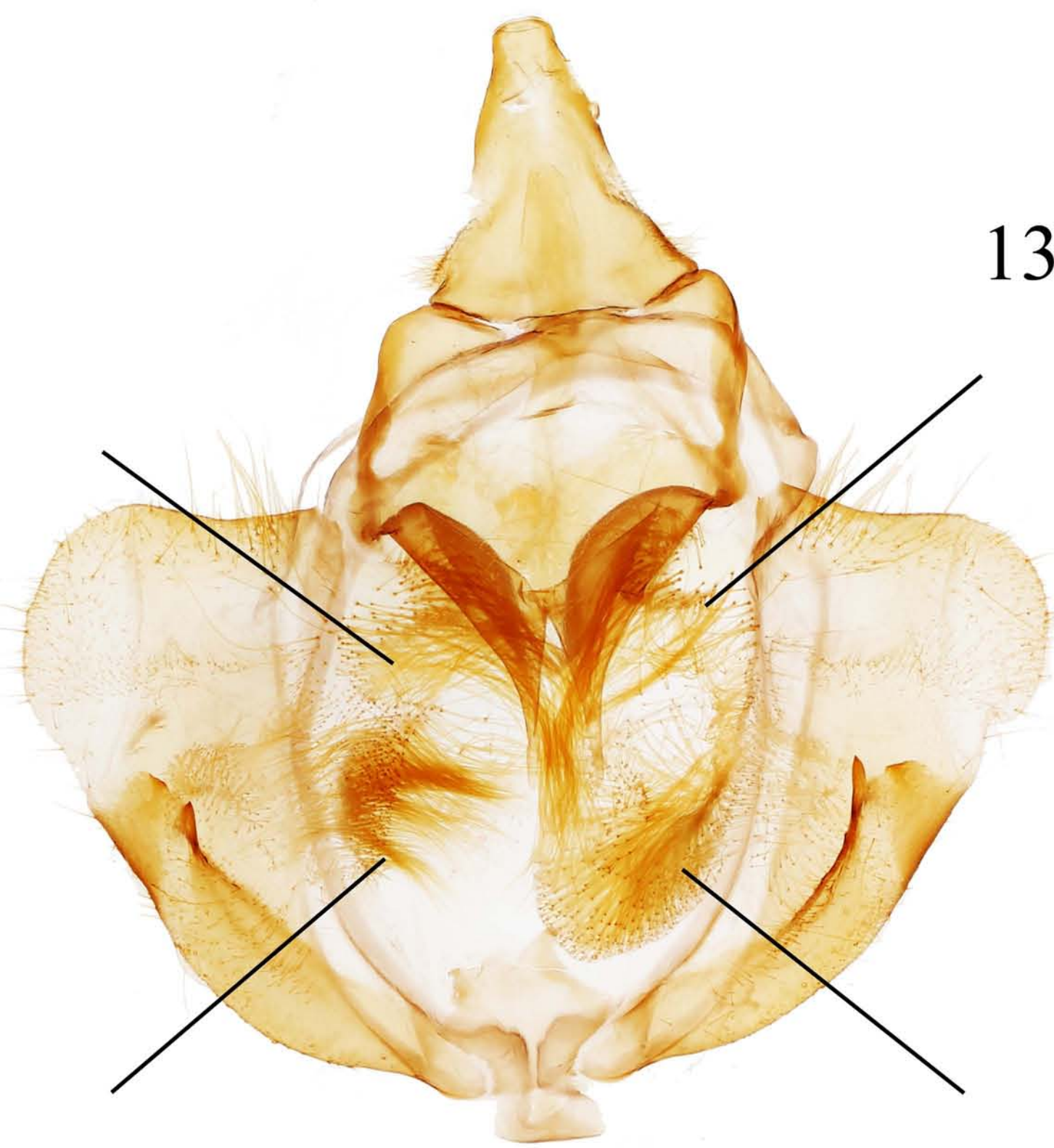
Procinnus cahureli

12:1



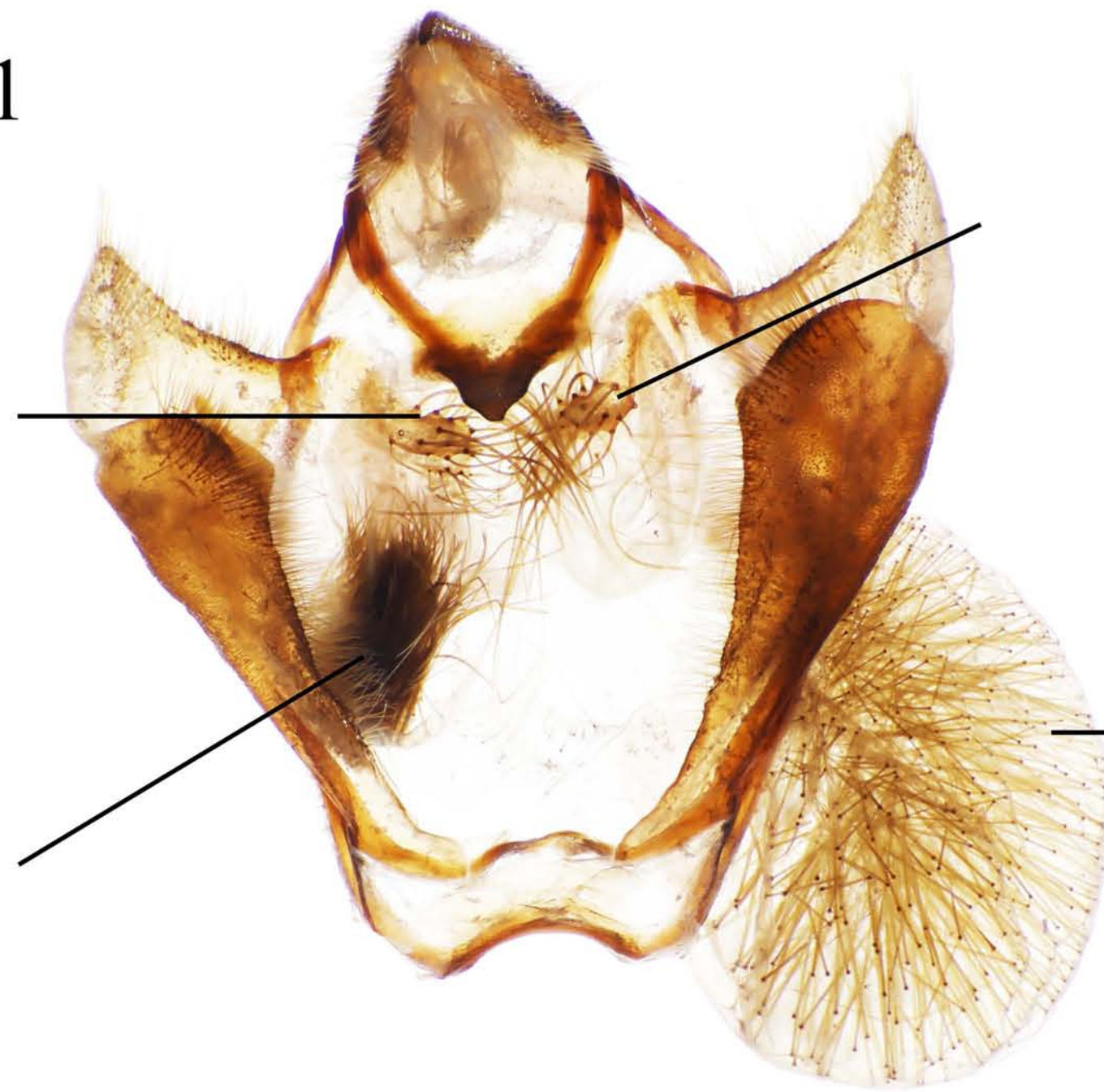
Ulmara rotunda

12:1



Reinmara enthona

13:1

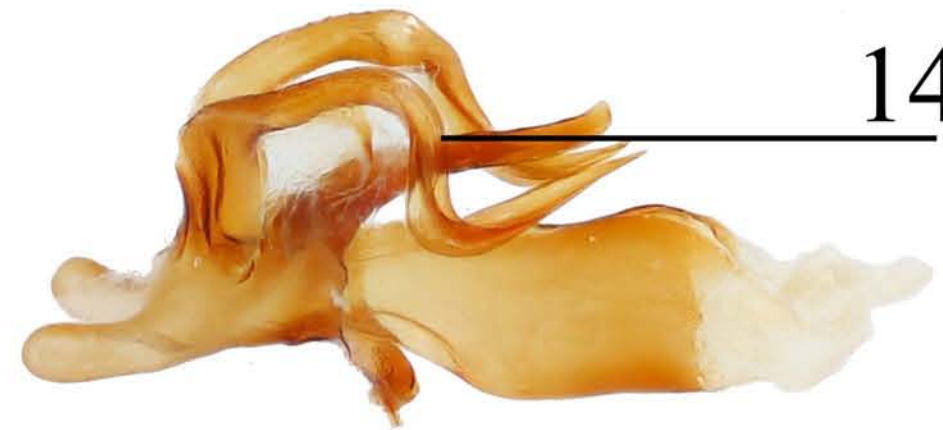


Trogoptera cf notata



Arianula haxairei

14:0



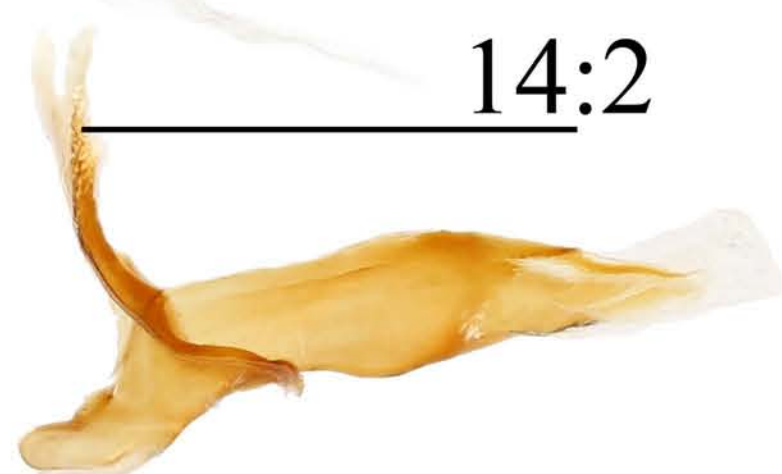
Cunicumara anae

14:2



Tolypida cf amaryllis

14:2



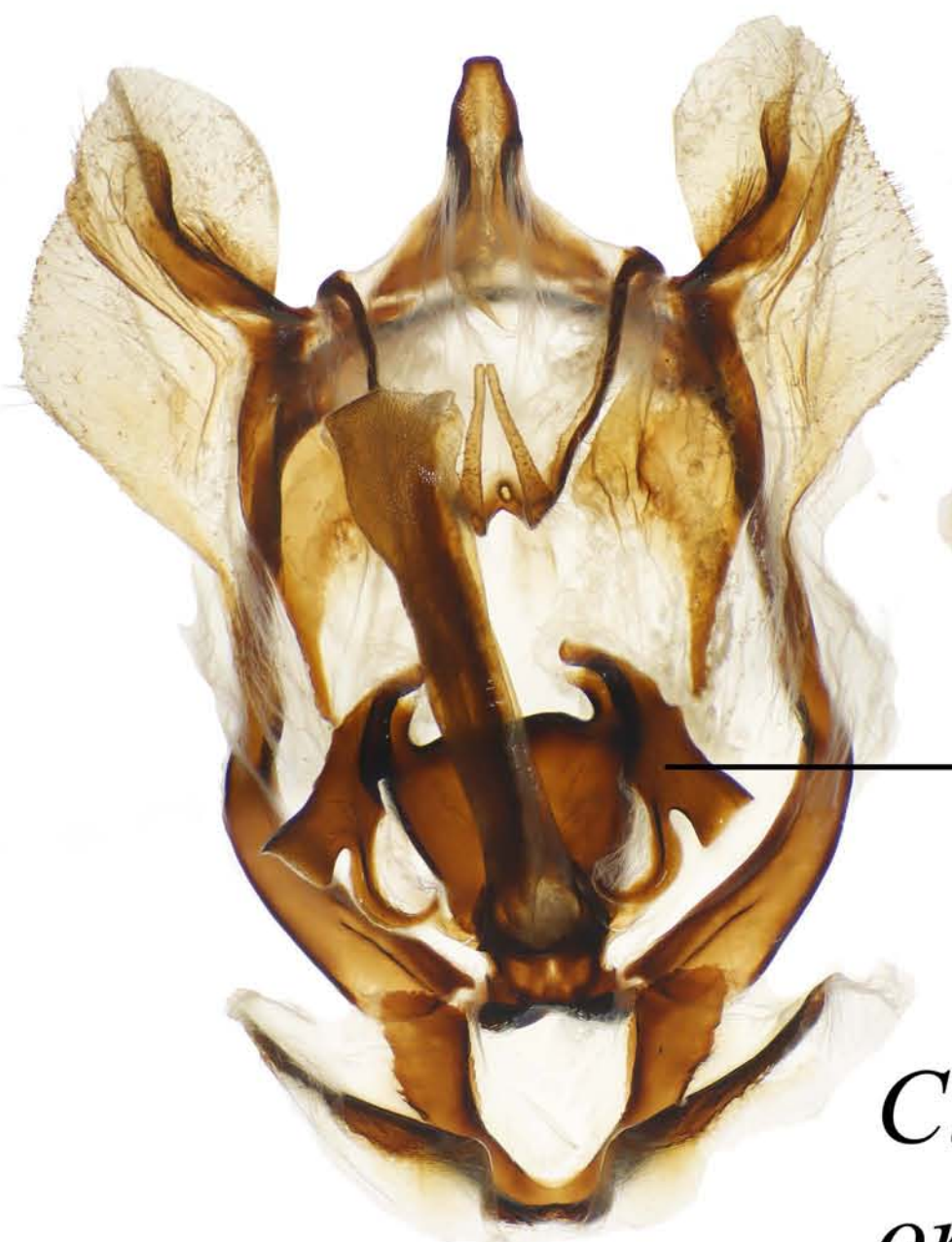
Menevia lantona

14:2



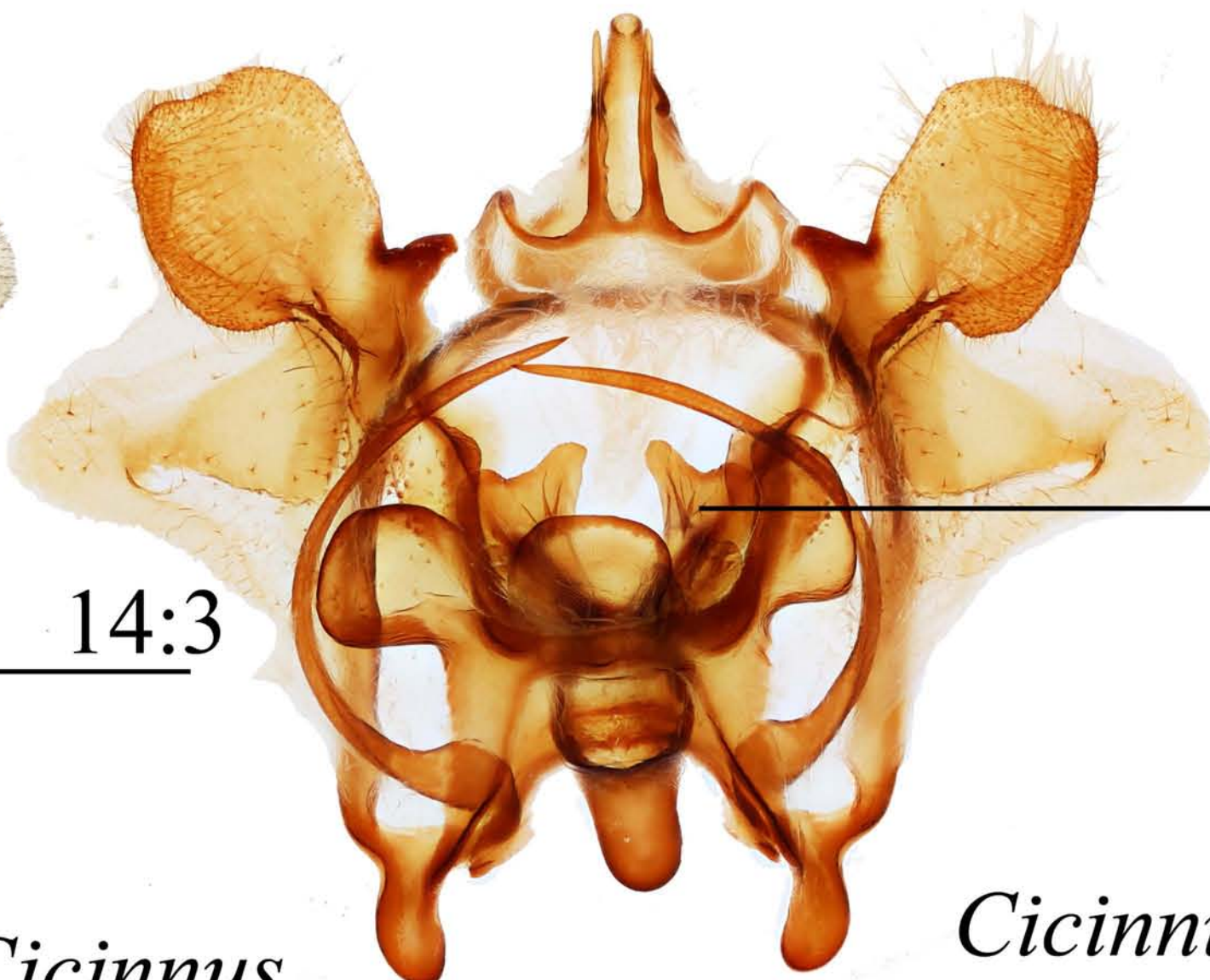
Cicinnus lemoulti

14:4



Cicinnus orthane

14:3



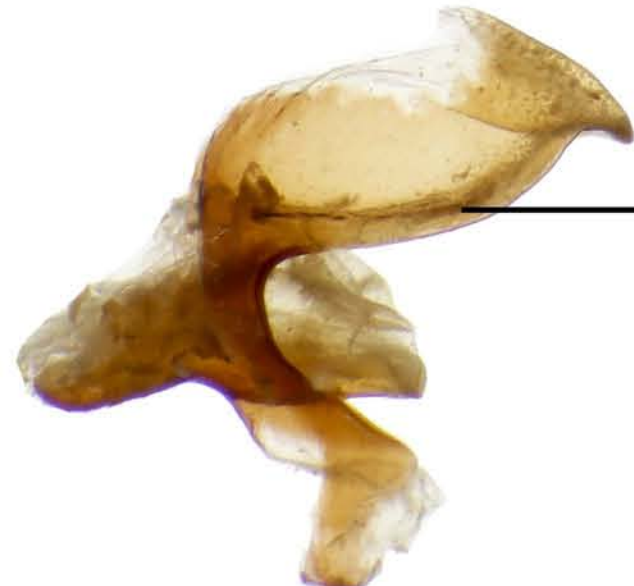
Cicinnus cf veigli

14:3

Aleyda accipiter

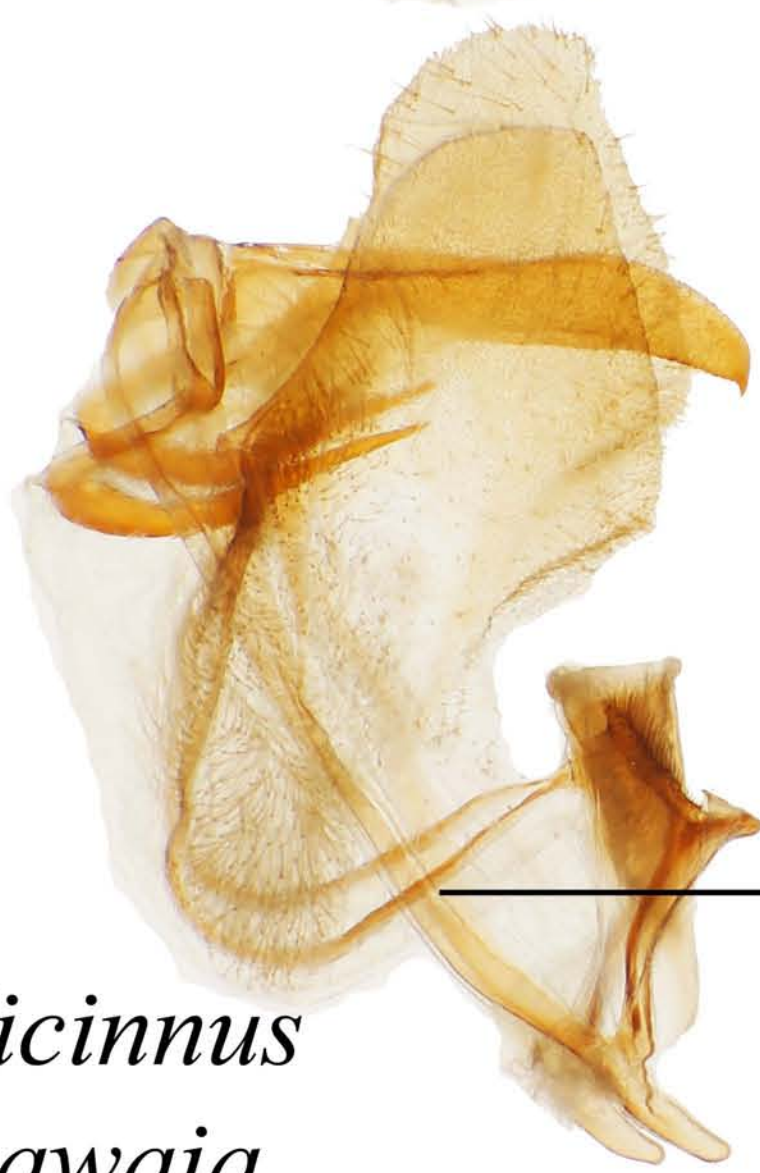


14:1



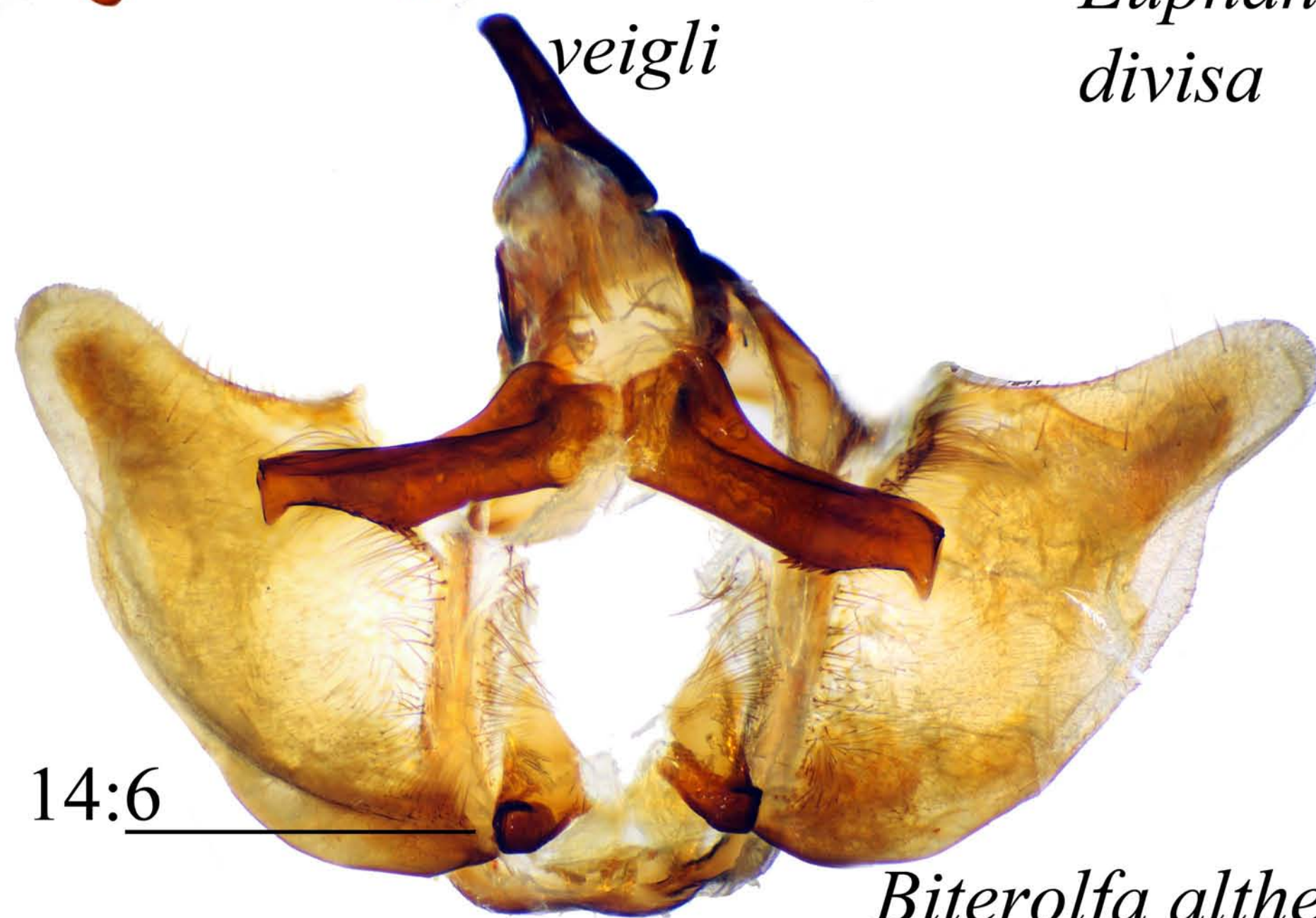
Euphaneta divisa

14:5



Cicinnus mawaja

14:7



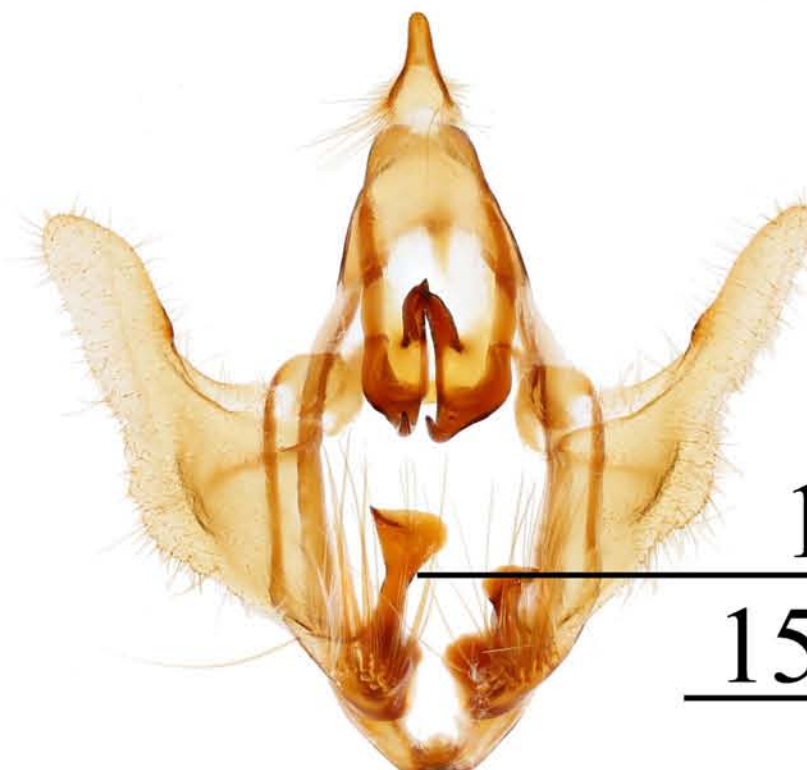
Biterolfa althea

14:6



Eadmuna esperans

15:0



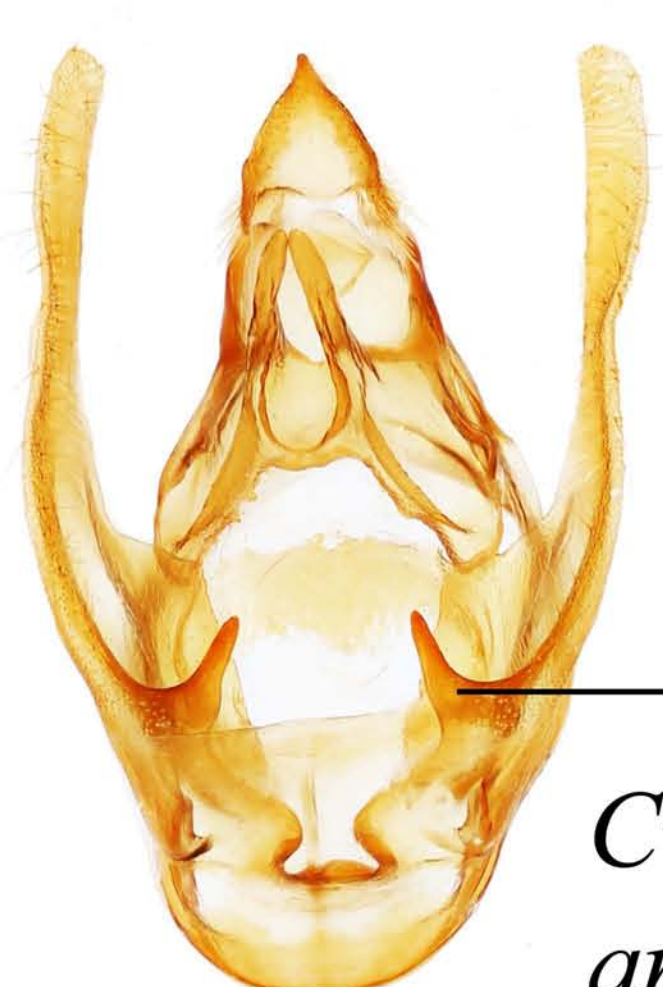
Auroriana colombiana

15:5



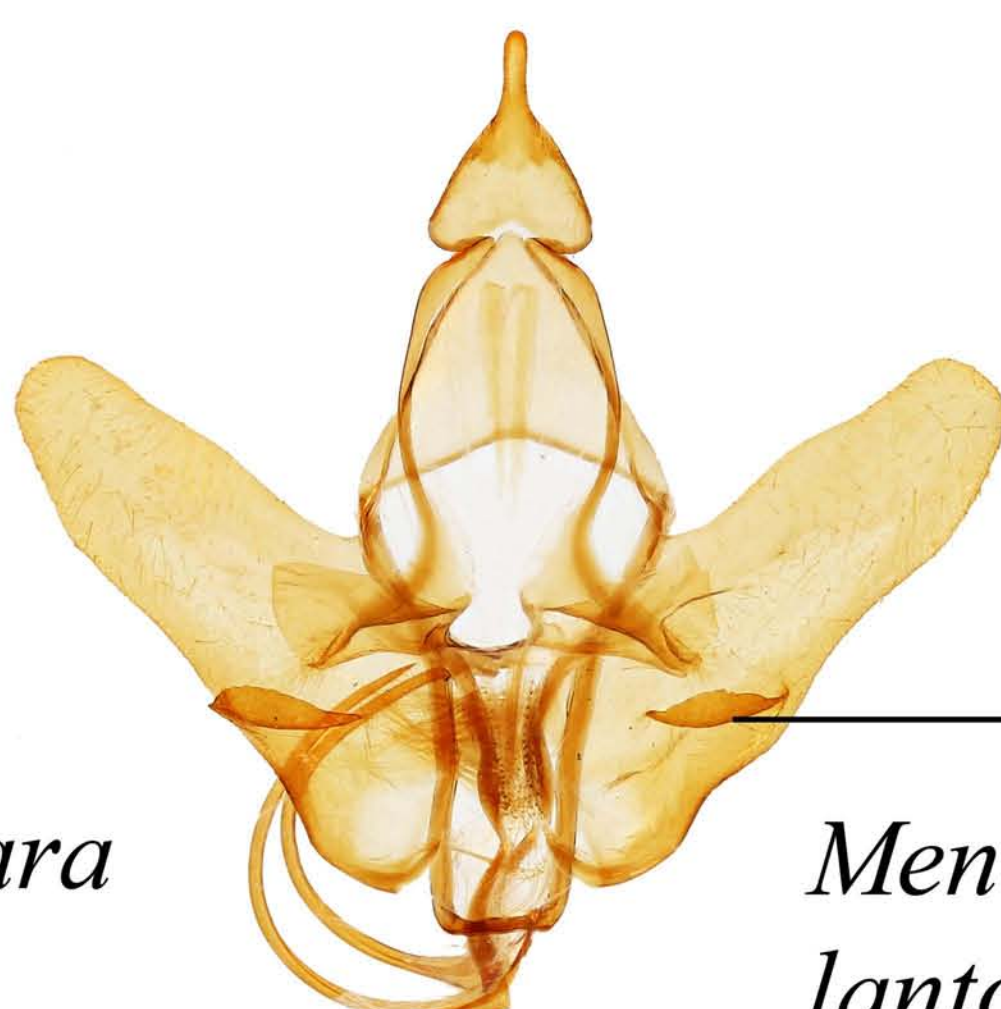
Auroriana florianensis

15:6



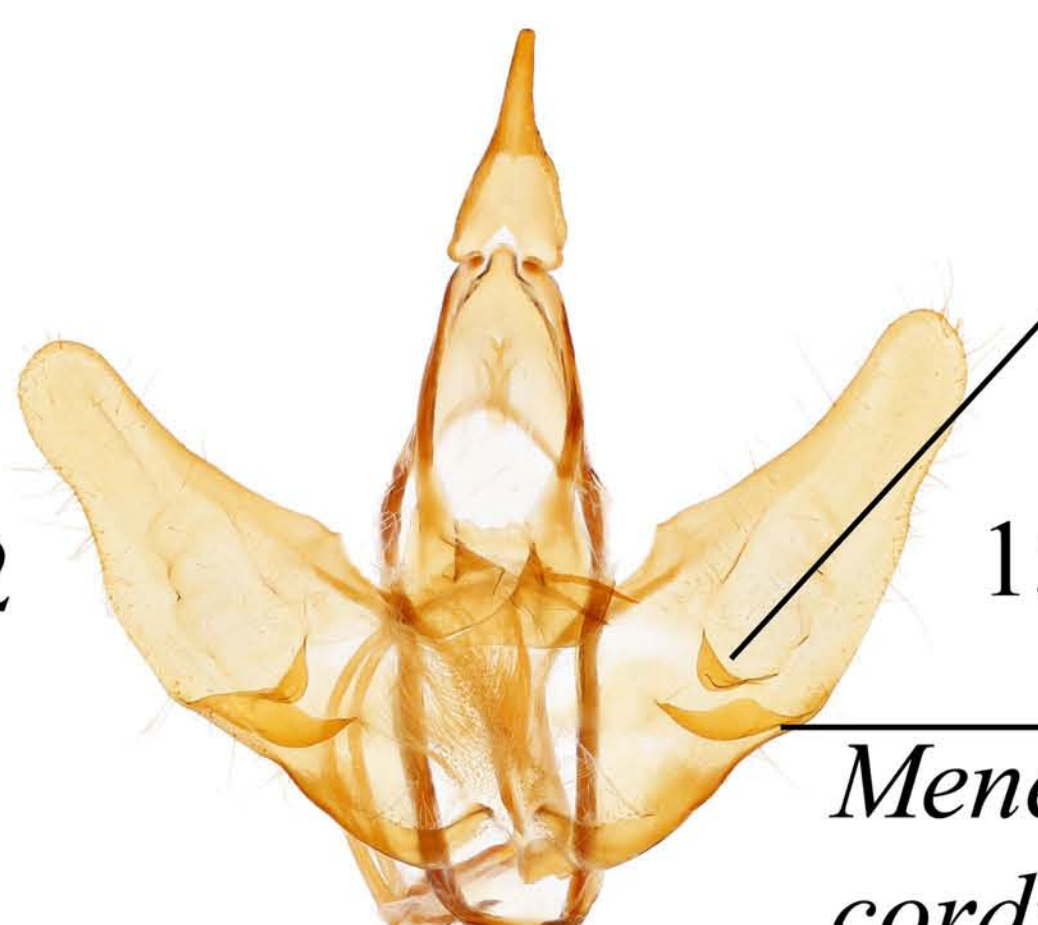
Cunicumara anae

15:1



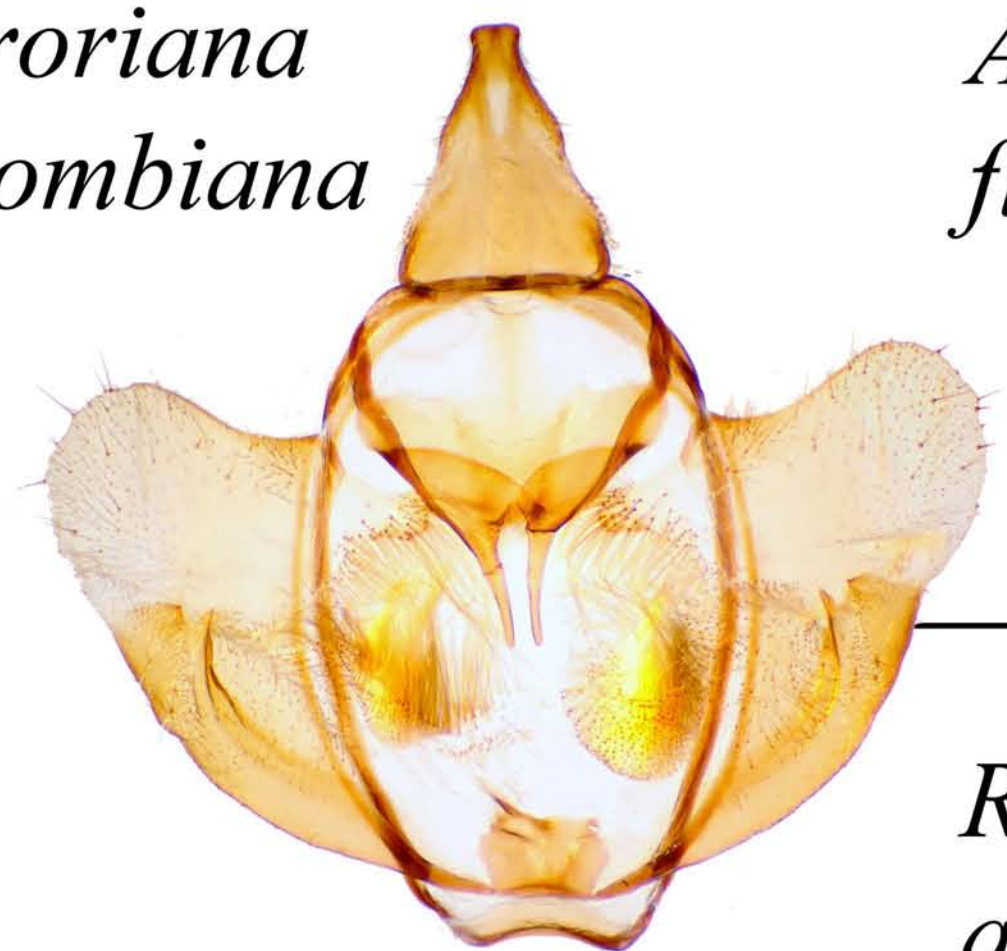
Menevia lantona

15:2



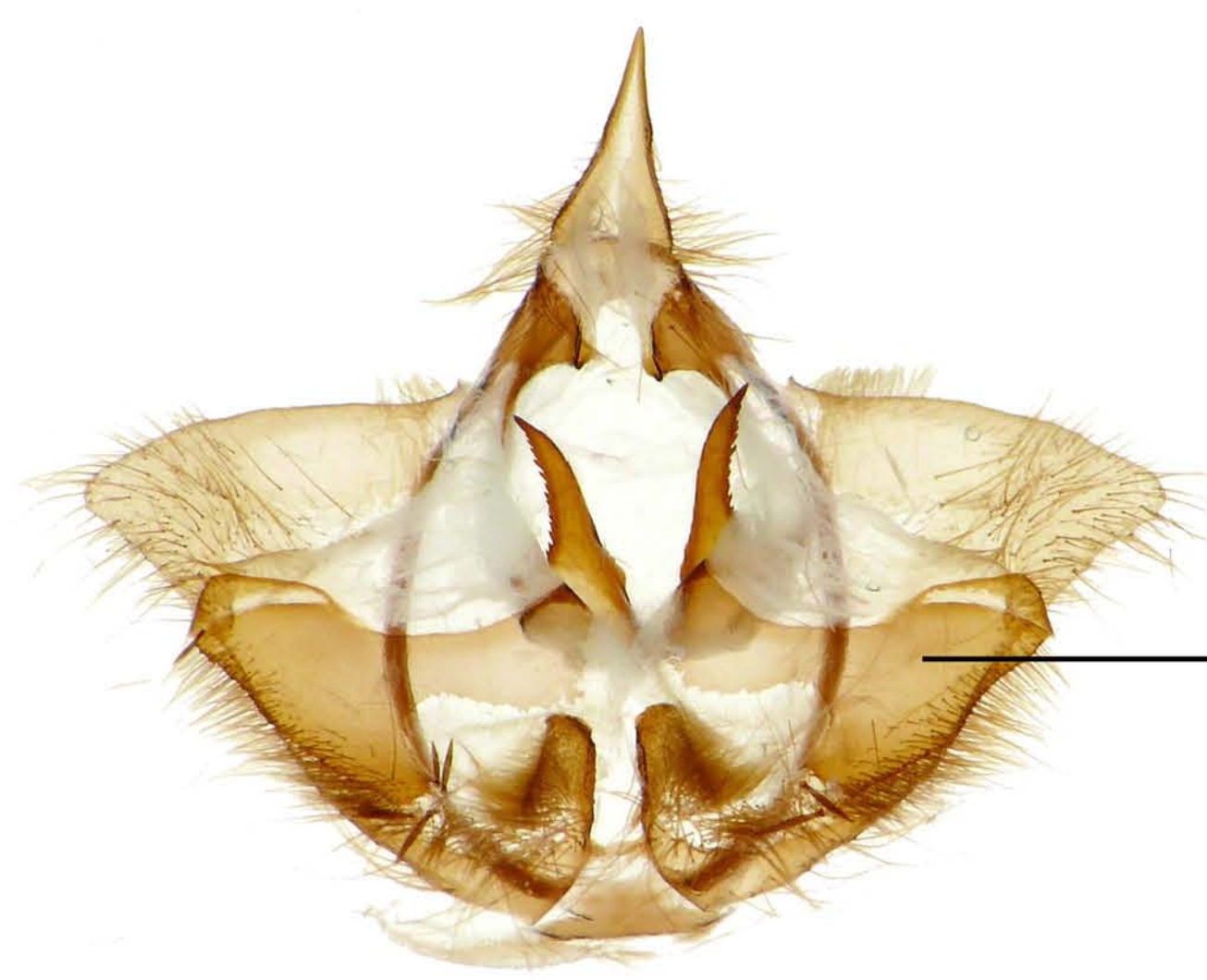
Menevia cordillera

15:3



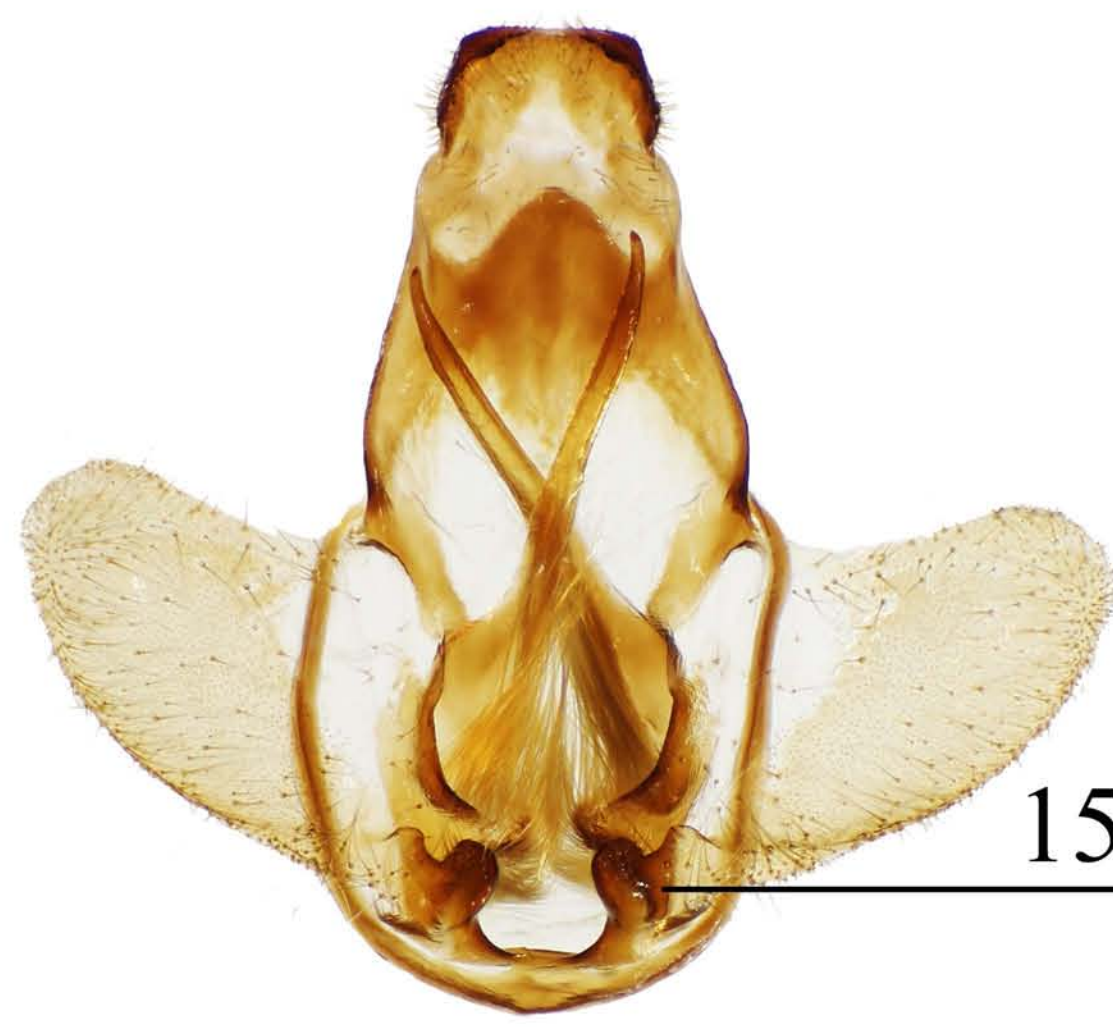
Reinmara atlantica

15:4



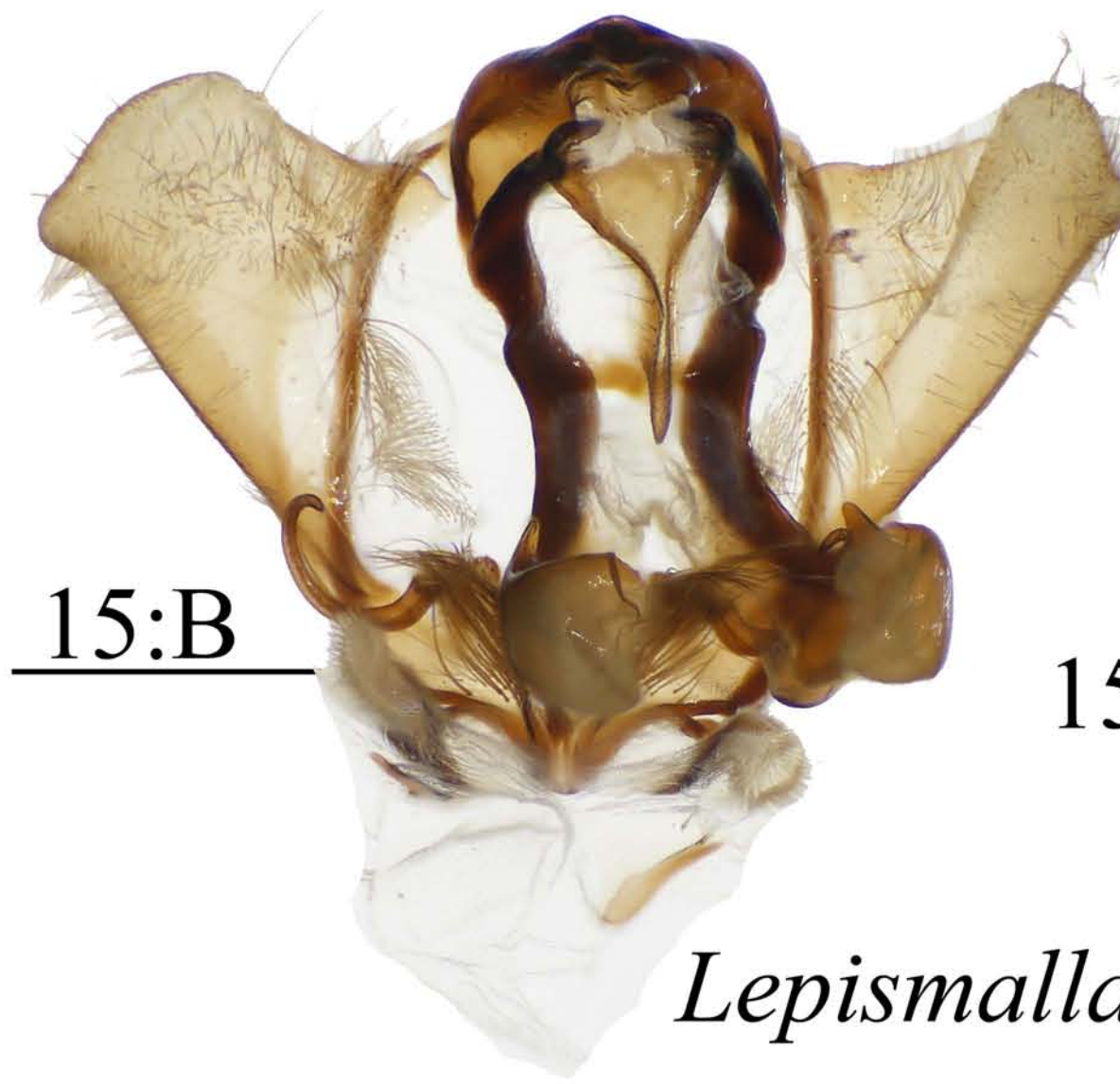
15:7

Lacosoma cf diderica



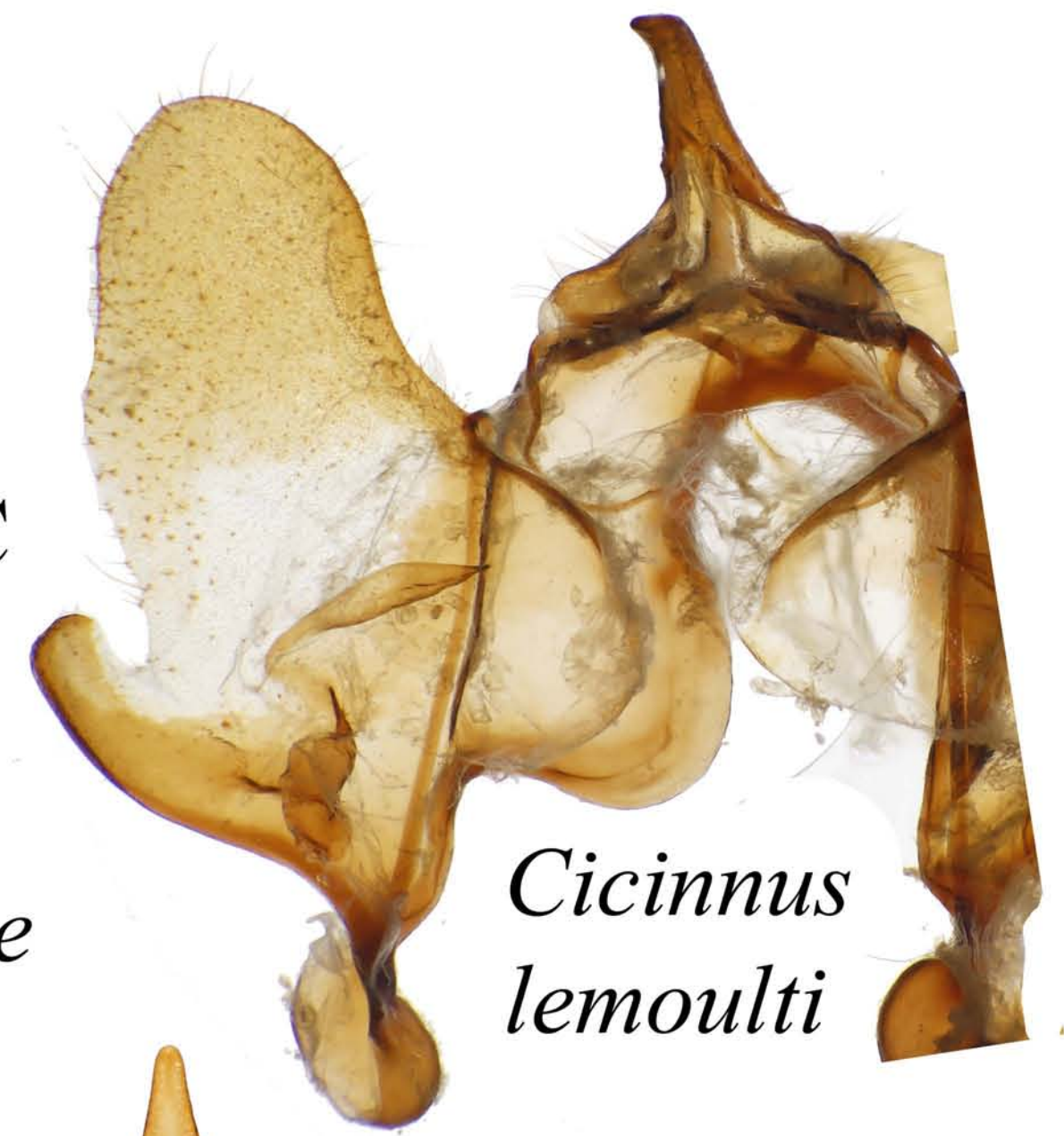
15:8

Fatellalla fatella



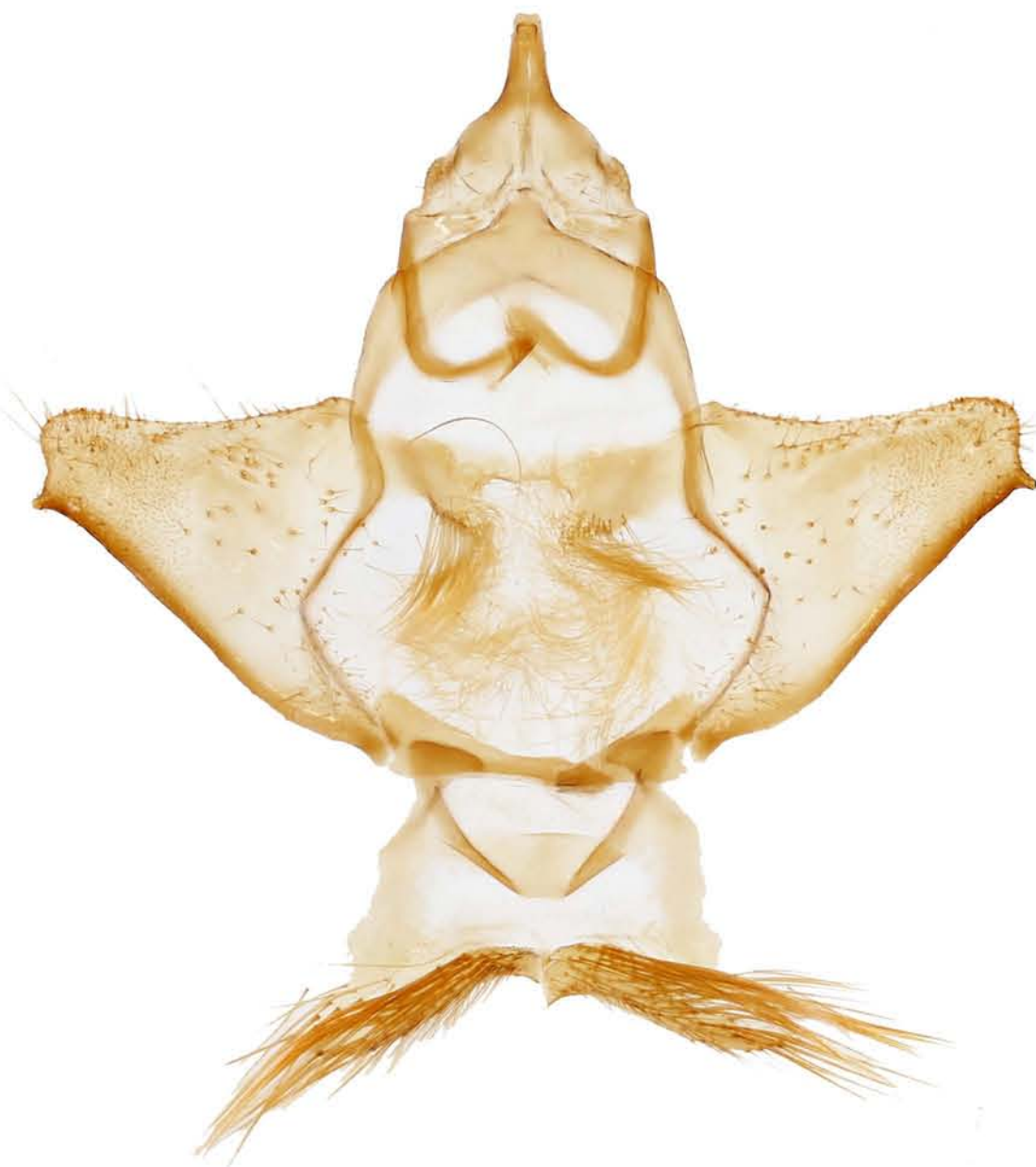
15:B

Lepismalla montagnaniae



15:C

Cicinnus lemoulti



15:9

Ulmara rotunda



15:A

Aleyda heppneri



15:D

Isoscella peigleri

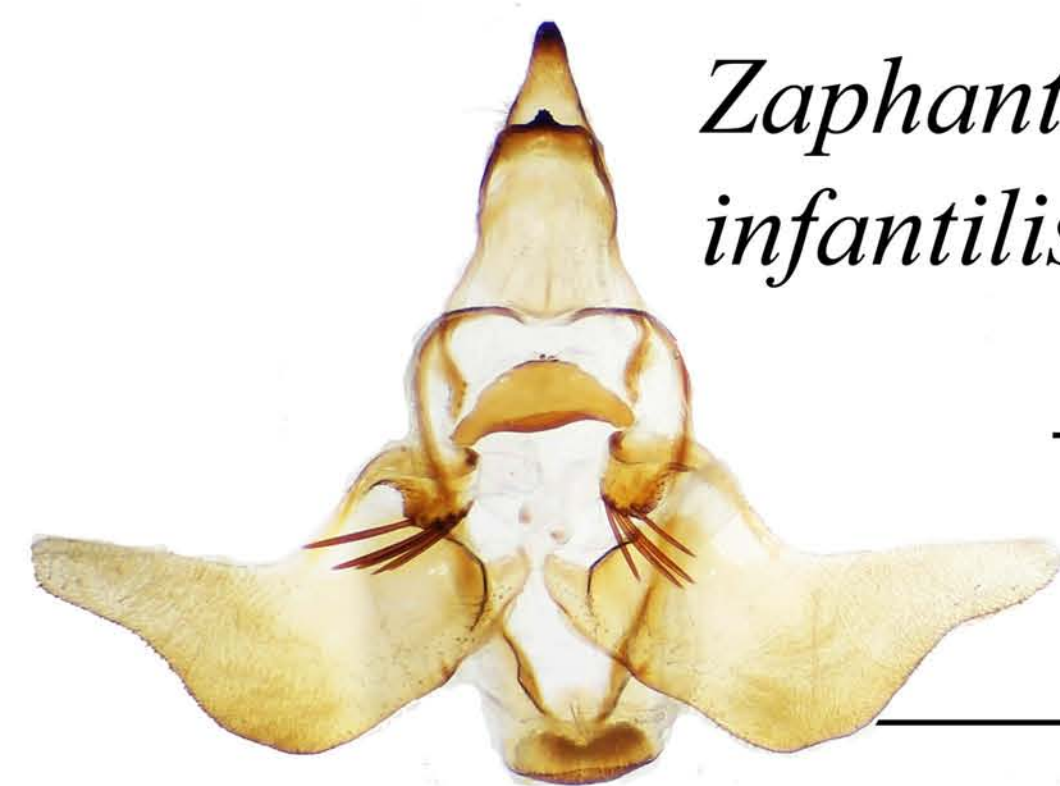


Lepismalla montagnaniae

16:1



Micrallo minutus



Zaphanta infantilis

17:1

17:0

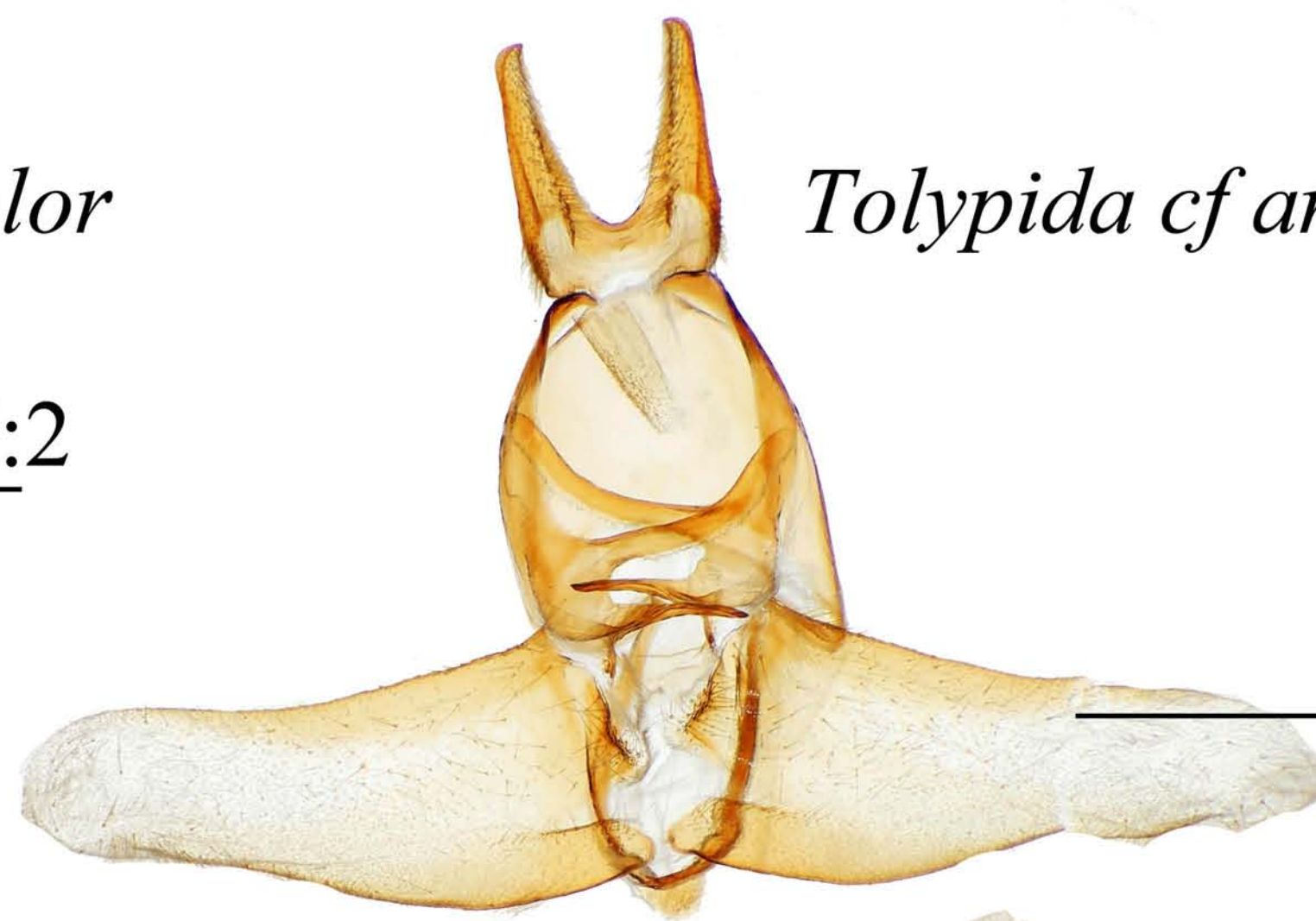


Adalgisa croesa



Psychocampa concolor

17:2



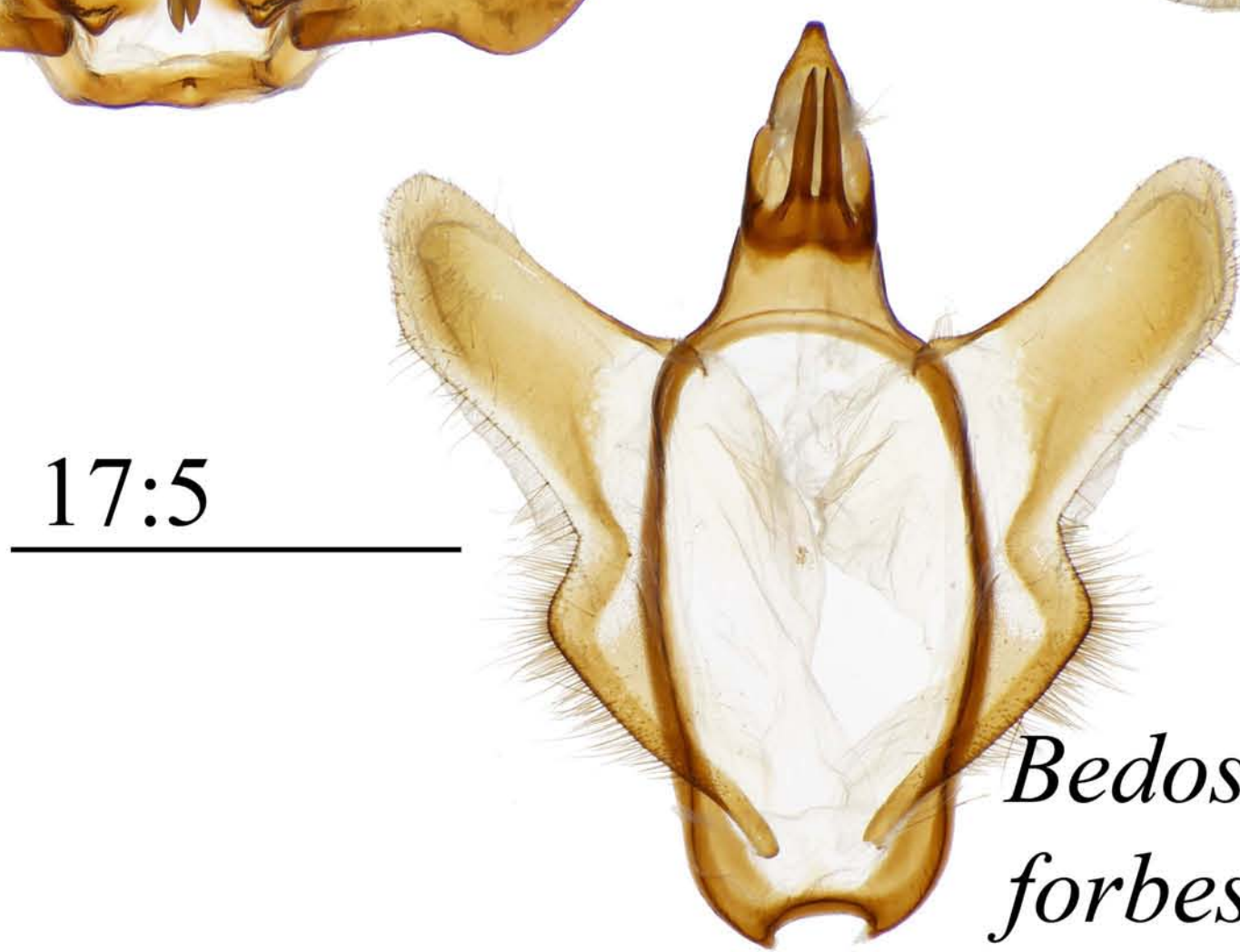
Tolypida cf amaryllis

17:3



Alheita rionica

17:4



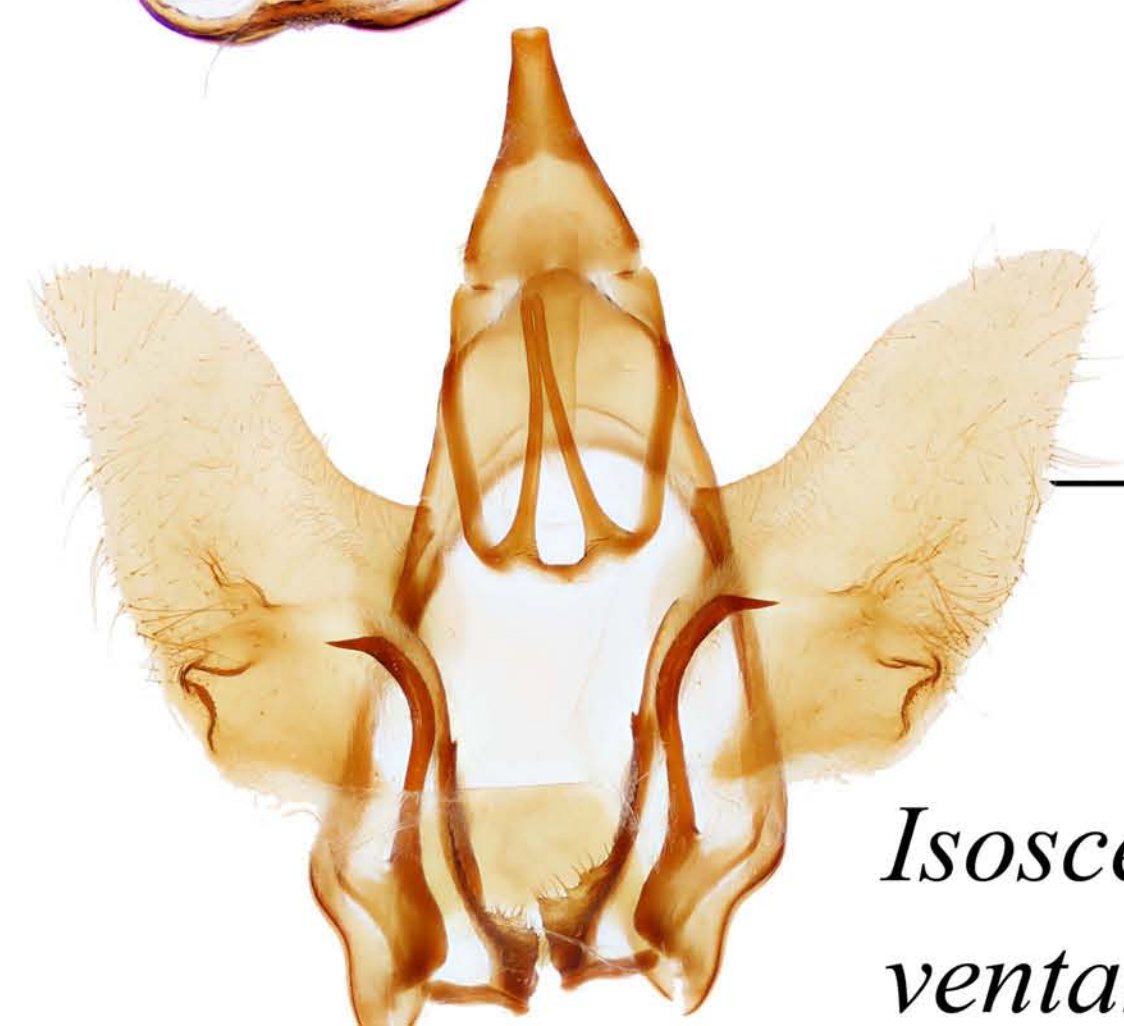
17:5

Bedosiallo forbesi



17:6

Cicinnus orthane



17:7

Isoscella ventana

