

## ZooKeys

### **Systematics of *Phyllocnistis* leaf-mining moths (Lepidoptera: Gracillariidae) feeding on dogwood (*Cornus* spp.) in Northeast Asia, with the description of three new species**

Natalia Kirichenko<sup>1,2</sup>, Paolo Triberti<sup>3</sup>, Shigeki Kobayashi<sup>4</sup>, Toshiya Hirowatari<sup>5</sup>, Camiel Doorenweerd<sup>6,7</sup>, Issei Ohshima<sup>8</sup>, Guo-Hua Huang<sup>9</sup>, Min Wang<sup>10</sup>, Emmanuelle Magnoux<sup>11</sup>, Carlos Lopez-Vaamonde<sup>11,12</sup>

<sup>1</sup>Sukachev Institute of Forest SB RAS, Akademgorodok 50/28, 660036, Krasnoyarsk, Russia; [nkirichenko@yahoo.com](mailto:nkirichenko@yahoo.com)

<sup>2</sup>Siberian Federal University, 79 Svobodny pr., 660041, Krasnoyarsk, Russia

<sup>3</sup>Museo Civico di Storia Naturale, Lungadige Porta Vittoria 9, I37129, Verona, Italy; [caloptilia@alice.it](mailto:caloptilia@alice.it)

<sup>4</sup>Entomological Laboratory, Graduate School of Life and Environmental Science, Osaka Prefecture University, Sakai, Osaka, 599-8531, Japan; [crossroad1994@hotmail.co.jp](mailto:crossroad1994@hotmail.co.jp)

<sup>5</sup>Entomological Laboratory, Faculty of Agriculture, Kyushu University, 6-10-1 Hakozaki, Fukuoka, 812-8581 Japan; [hirowat\\_t@agr.kyushu-u.ac.jp](mailto:hirowat_t@agr.kyushu-u.ac.jp)

<sup>6</sup>Department of Plant and Environmental Protection Sciences, University of Hawaii, 3050 Maile Way, 96822, Honolulu, United States of America;

<sup>7</sup>Naturalis Biodiversity Center, PO Box 9557, NL-2300 RA Leiden, The Netherlands

<sup>8</sup>Department of Life and Environmental Sciences, Kyoto Prefectural University, Kyoto, Japan, [issei@kpu.ac.jp](mailto:issei@kpu.ac.jp)

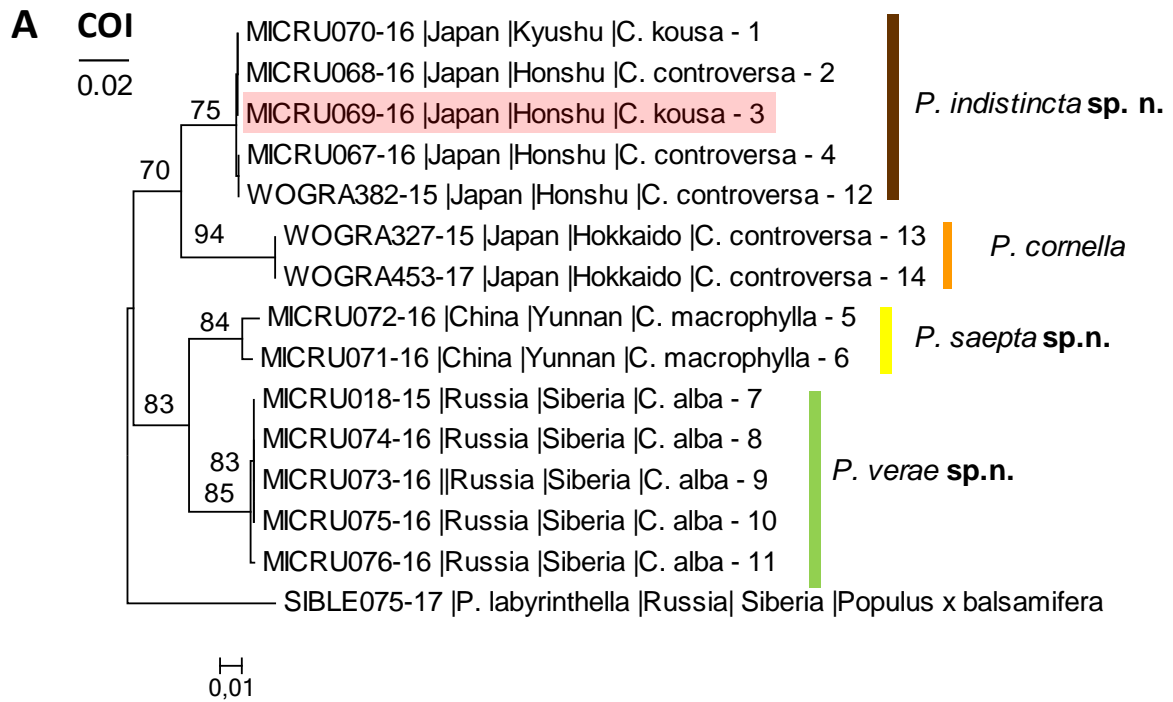
<sup>9</sup>Hunan Provincial Key Laboratory for Biology and Control of Plant Diseases and Insect Pests, Hunan Agricultural University, Changsha 410128, Hunan, China; [ghuang@hunau.edu.cn](mailto:ghuang@hunau.edu.cn)

<sup>10</sup>Department of Entomology, South China Agricultural University, Guangzhou 510642, Guangdong, China; [minwang@scau.edu.cn](mailto:minwang@scau.edu.cn)

<sup>11</sup>INRA, UR0633 Zoologie Forestière, F-45075 Orléans, France; [emmanuelle.magnoux@inra.fr](mailto:emmanuelle.magnoux@inra.fr), [carlos.lopez-vaamonde@inra.fr](mailto:carlos.lopez-vaamonde@inra.fr)

<sup>12</sup>Institut de Recherche sur la Biologie de l'Insecte, CNRS UMR 7261, Université François-Rabelais de Tours, UFR Sciences et Techniques, 37200 Tours, France

Corresponding author: Natalia Kirichenko ([nkirichenko@yahoo.com](mailto:nkirichenko@yahoo.com))

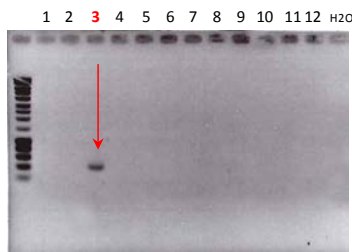


**B Test № 1**

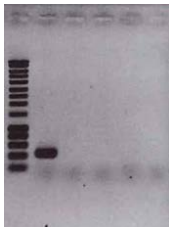
*Wolbachia*

**wsp**

Primers: wspecF, wspecR



+ 12 13 14 H2O

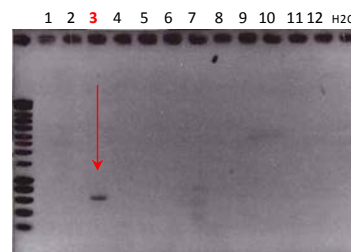


**Test № 2**

*Wolbachia*

**wsp**

Primers: wsp81F, wsp691R



+ 12 13 14 H2O

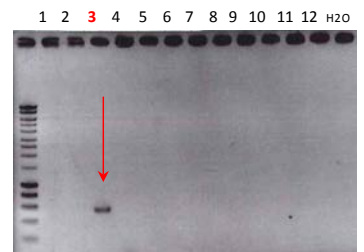


**Test № 3**

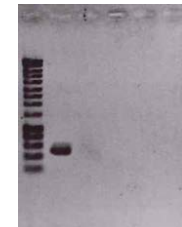
Rickettsiaceae

**fbpA**

Primers: fbpa-F1, fbpa-R1



+ 12 13 14 H2O



**Figure S1.** The DNA barcoded specimens of *Cornus*-feeding *Phyllocnistis* tested for presence of *Wolbachia* and other Rickettsiaceae. The serial number of the specimens (№ 1-14) on the COI tree (A) correspond to those on the images of agarose gels (B). The positive control is indicated by “+”, negative by “H2O”. The infected *Phyllocnistis* specimen MICRU069-16 from Japan (Honshu) is shown under № 3 and additionally shaded in red on the COI tree.