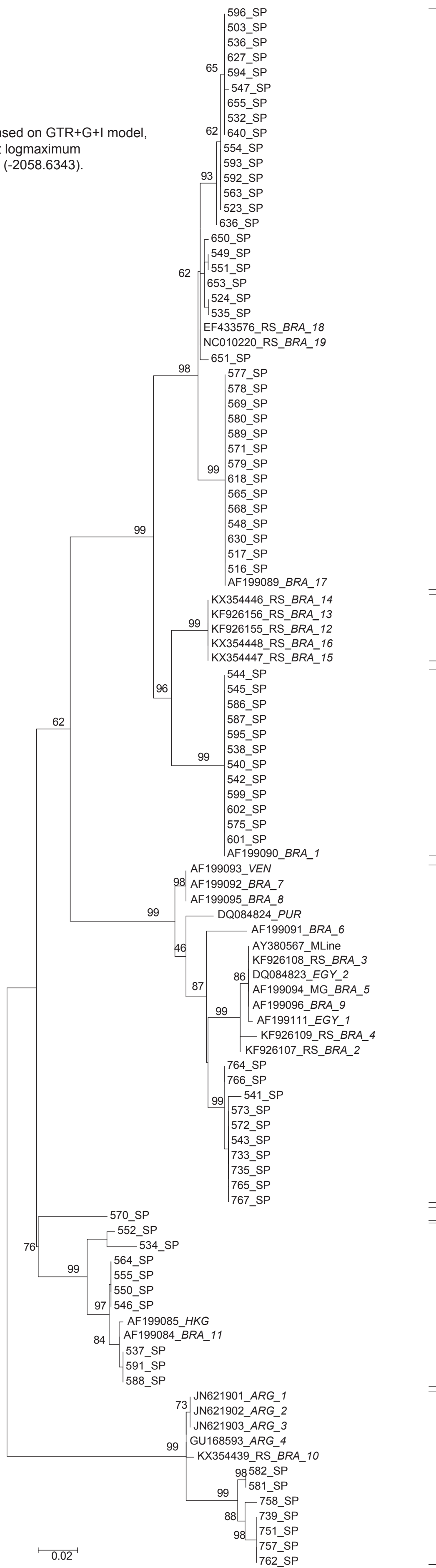


ML Topology based on GTR+G+I model,
with the highest logmaximum
likelihood value (-2058.6343).



B. tenagophila

B. t. guaibensis

B. occidentalis

B. glabrata

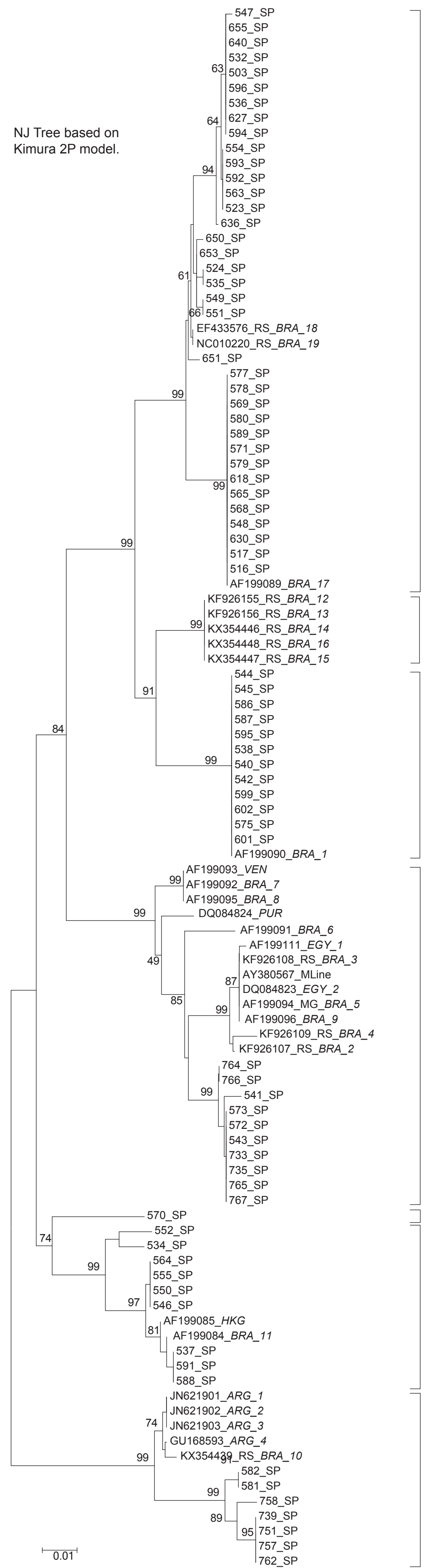
B. intermedia

B. straminea

B. peregrina

0.02

NJ Tree based on
Kimura 2P model.



B. tenagophila

B. t. guaibensis

B. occidentalis

B. glabrata

B. intermedia

B. straminea

B. peregrina

0.01